

A-9384

Duplum

AUG. VELLOMÄE-SPIRKE

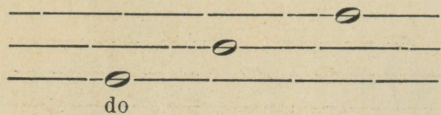
ESIMESI SAMMIE LAULMISÕPETUSES

III. KL. ÕPILASE

TÕÕVIHK

K. K. Ü. „TÕÕKOOL“, TALLINN, 1935

Siin on kolm neljalöögilist nooti (heli):

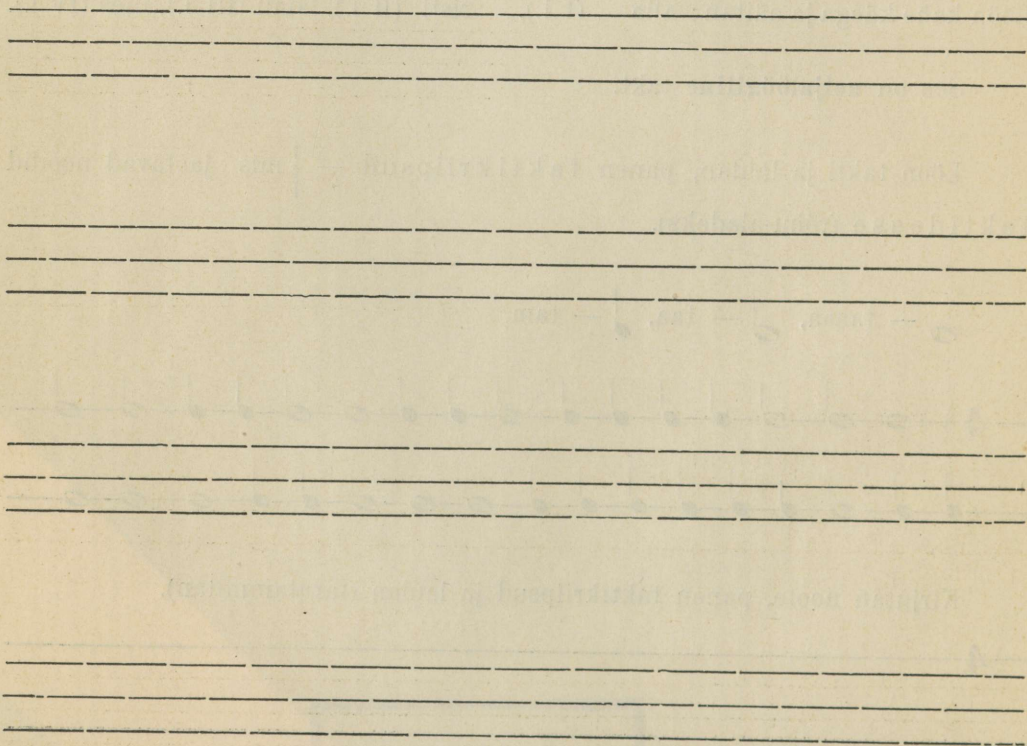
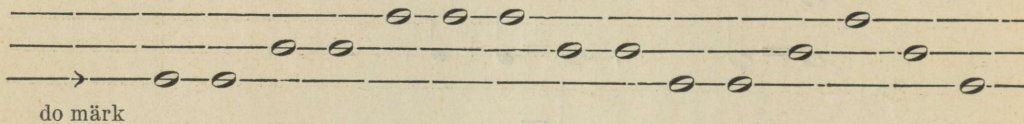


Nende nimed on: do, mi, so.

Kirjutan igale noodile tema nime alla.

Iga noot kõlab isesuguselt. Laulan: do, mi, so.

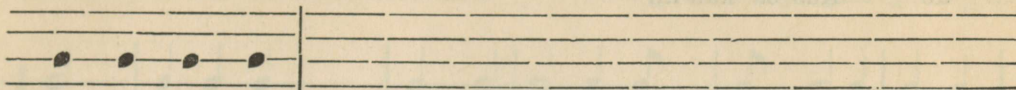
Löön takti ja laulan.



Tõmban jooni juurde, kui tarvis.

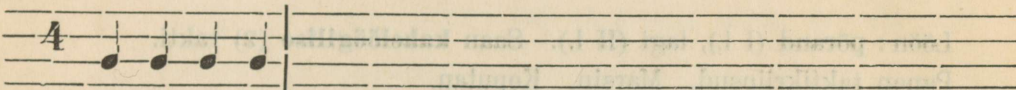
Kirjutan laulu „**Armas koht**“ esimese salmi sõnad joonestiku alla.
 a) Proovin marssimisega, kas laul on 2- või 3- osaline. Tõmban takti-
 kriipsud ja panen taktimõõdu. b) Märgin punktide abil mitu heli tuleb iga
 silbi kohta. c) Märgin noodi vältuse.

b) Nii :



Kus sa kau - nil kin - gu rin - nal

c) Märgin noodi vältuse.



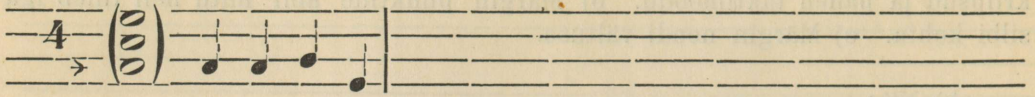
Kus sa kau-nil kin-gu rin-nal

Tuletan meelde

o	-	taaaa			-	poolelöögilised (kaheksandikud) noodid
	-	taa			=	+
	-	tam			=	
	-	ta-ra			-	side, ühendab noote.

Kirjutan laulu „Armas koht“ raamatust

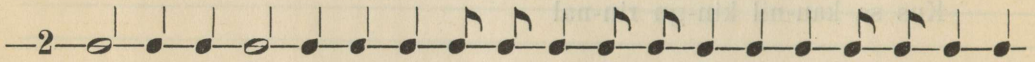
nii



do Kus sa kau-nil

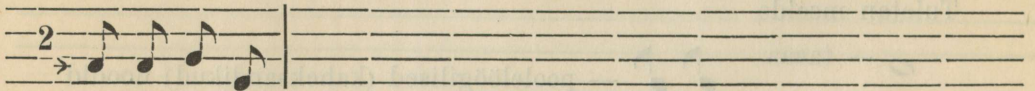
Löön : põrand (I l.), lagi (II l.). Saan **kahelöögilise** (2) takti.

Panen taktikriipsud. Marsin. Koputan.

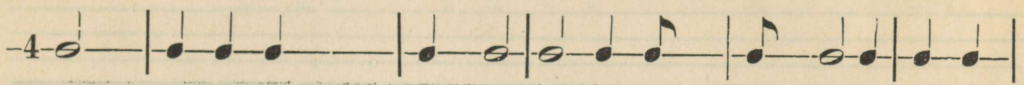
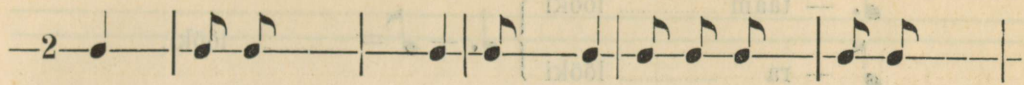


Kirjutan laulu „Armas koht“ kahelöögilises taktis poolevõrra lühemate nootidega.

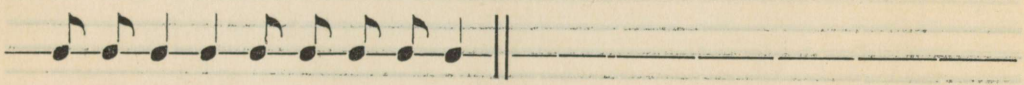
Nii :



Panen puuduvad noodid taktivahedesse.



Panen taktikriipsud, „tammitan“ ja rütmi järgi tuletan meelde, mis laul see on, ning kirjutan sõnad alla.



— taam lööki } $\text{♩} + \text{♩} = \text{♩}$ lööki.
 — ra lööki

Eesti lipp (E. Võrk).

Kirjutan laulu esimese salmi sõnad ja teen nii kui laulu „Armas koht“ juures.

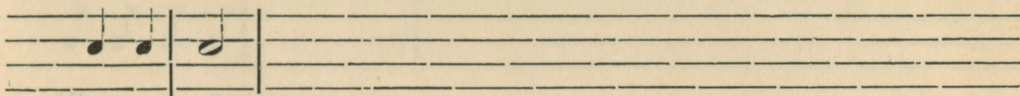
Kau - nis - ta - gem Ees - ti ko - jad

Laulu lõpul — — kolmelöögiline noot
 — löögiline paus (vaitolemise märk).

Handwritten musical notation on a page with ten five-line staves. The notation is extremely faint and appears to be bleed-through from the reverse side of the paper. It includes various musical symbols such as notes, stems, and bar lines, but is illegible due to its low contrast and ghosting.

Karjase laul (Raa-rii-raa).

Kirjutan esimese salmi sõnad. Õpetaja laulmise ja taktilöömise (enda jalalöögi) järgi määrän rütmi ja panen taktimõõdu.



Raa-rii - raa! Kar-ja lä-hen ma!

Kirjutan viisi tahvlilt või raamatust.

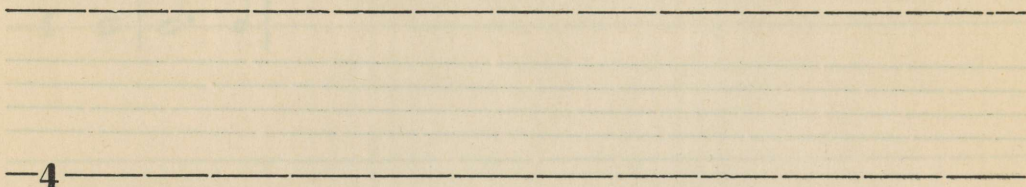


Raa-rii-raa! Kar-ja lä-hen ma!

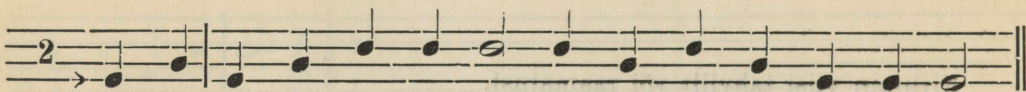
Panen noolid või pausid taktivahedesse.



Kirjutan edasi.

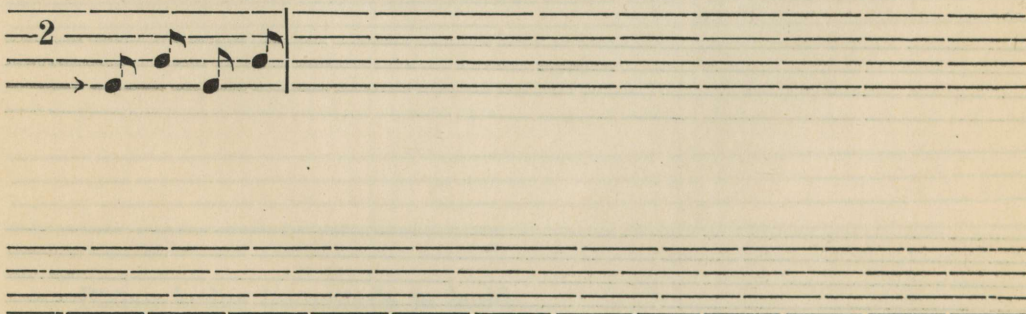


Panen taktikriipsud, laulan ja mõtlen sõnad nootidele alla.



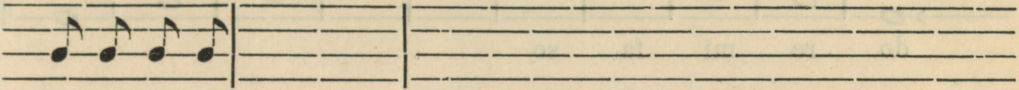
Kirjutan poolevõrra lühemates nootides.

Nii:

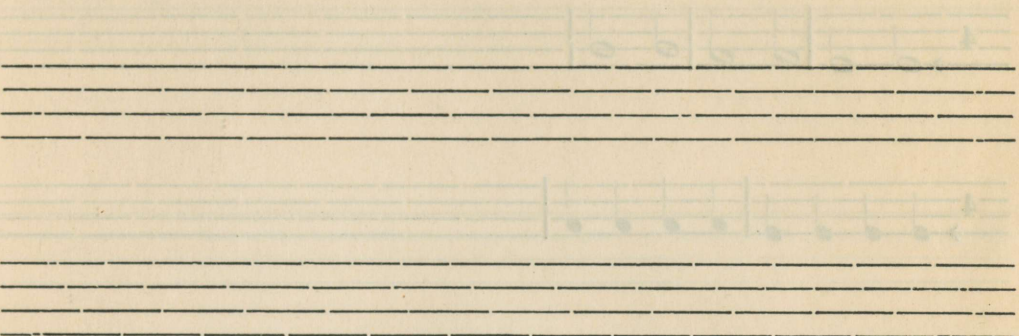


Minu veli virvipuu.

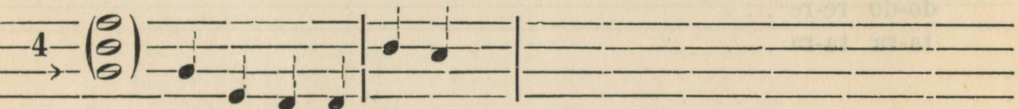
Toimin nii kui eelmise laulu juures.



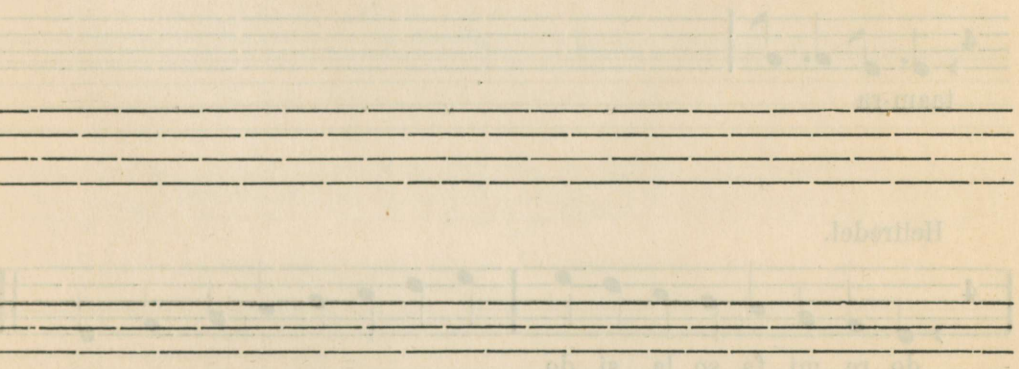
Mi - nu ve - li vir - vi - puu,



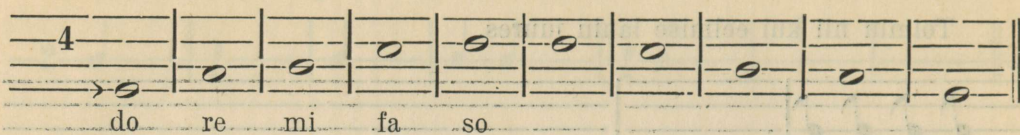
Kirjutan laulu 4-löögilises taktimõõdus (helid poolevõrra pikemad)



Mi - nu ve - li vir - vi - puu

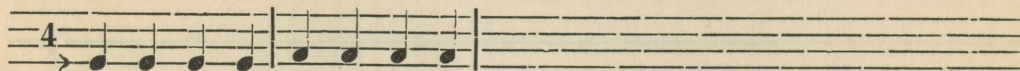
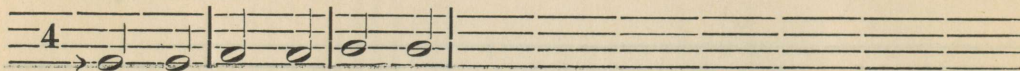


Löön takti ja laulan 1) rütmimedega ja 2) noodinimedega.

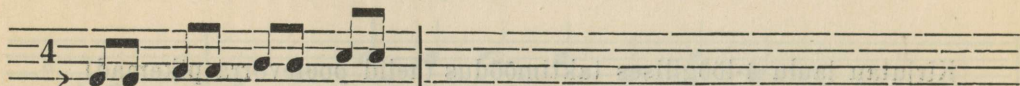


do re mi fa so

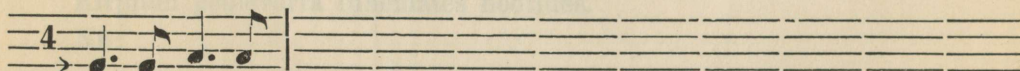
Kirjutan edasi



kirjutatakse ka nii



do-do re-re . . .
ta-ra ta-ra . . .



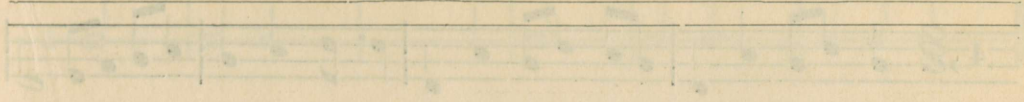
taam-ra

Heliredel.

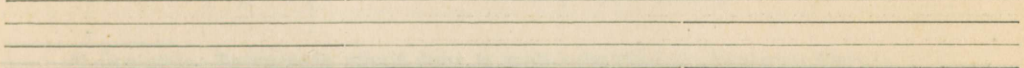
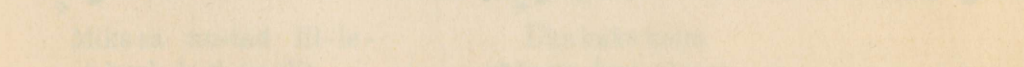
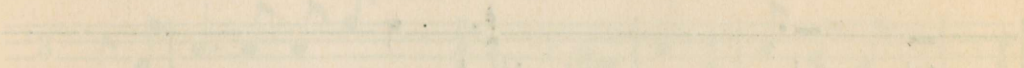
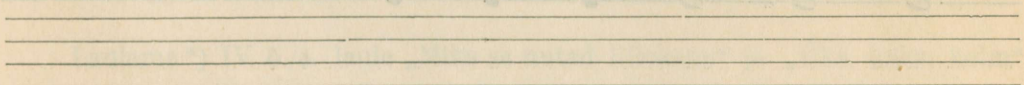
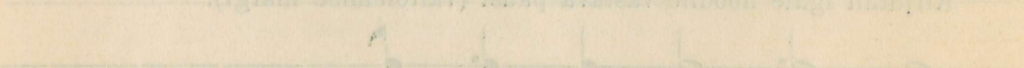
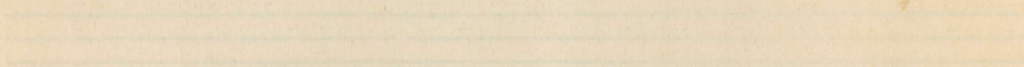
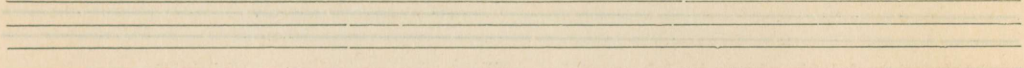
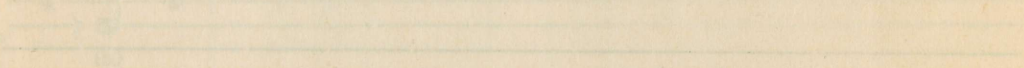
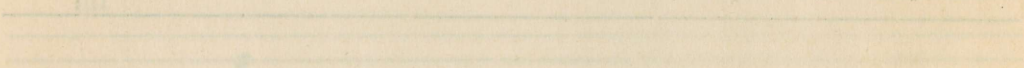
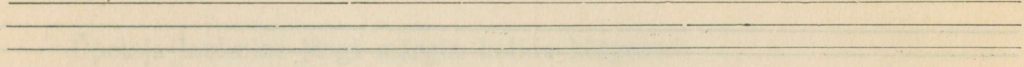
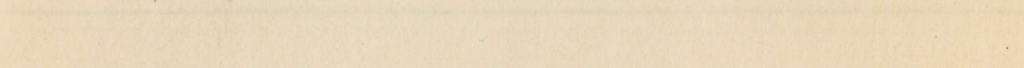
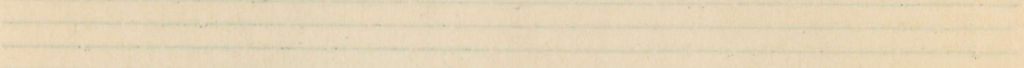
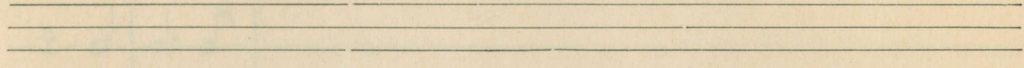


do re mi fa so la si do

Handwritten text at the top of the page, possibly a title or header.



Handwritten lyrics or text corresponding to the musical notation above.



Laulan laulu „Laulu mõju“ raamatust ja „tammitan“.

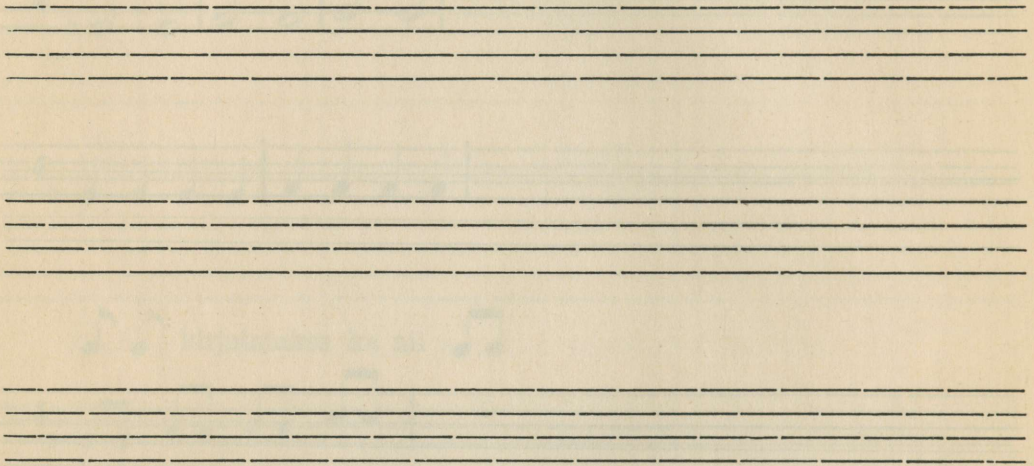


tam ta-ra tam tam

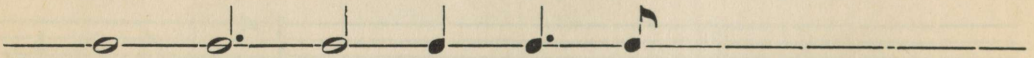
taam-ra

taa

Kui mina hak-kan lau - - le - mai-e



Kirjutan igale noodile vastava pausi (vaitolemise märgi).

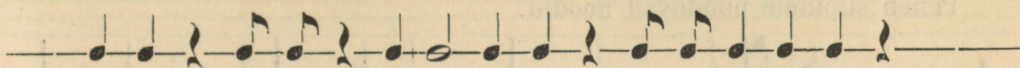


4 l.

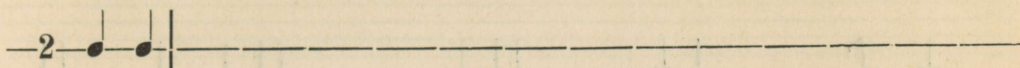
3 l.

1½ l.

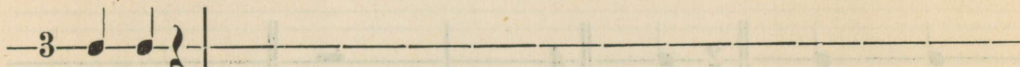
Kirjutan need noodid ja pausid 2-, 3- ja 4-löögilistes taktides



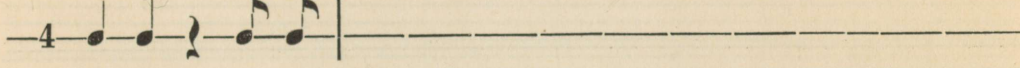
nii



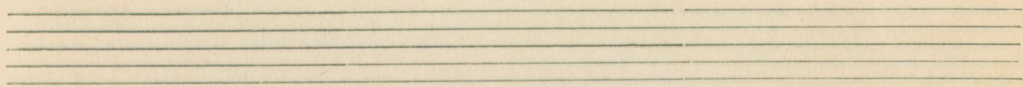
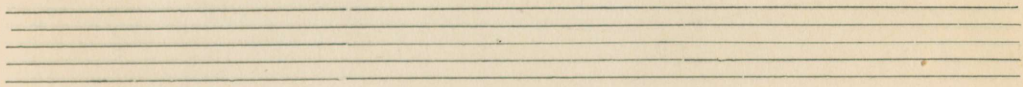
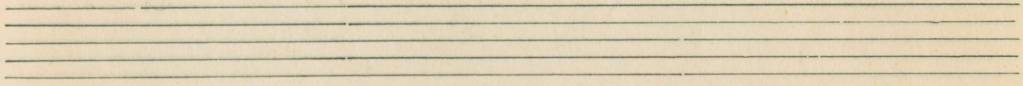
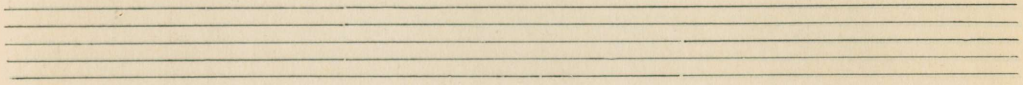
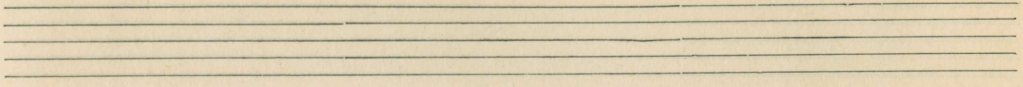
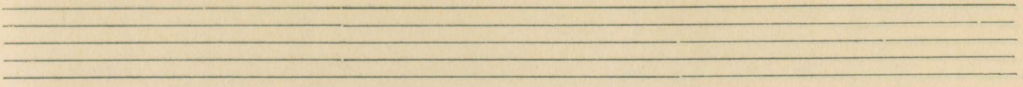
nii

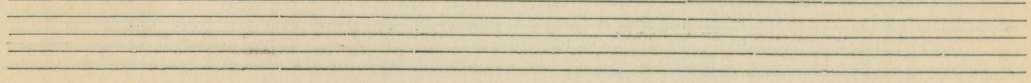
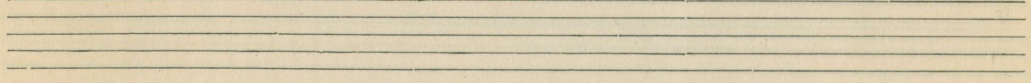
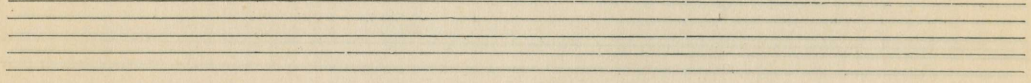
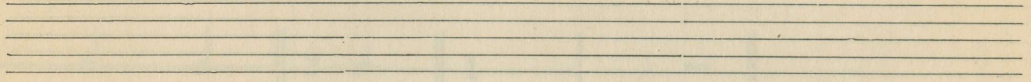
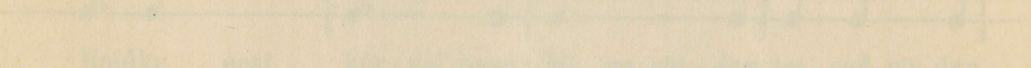
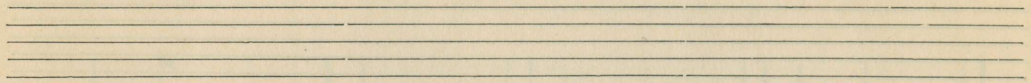
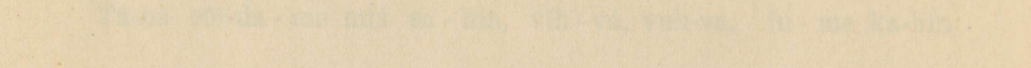
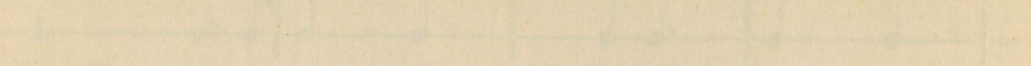
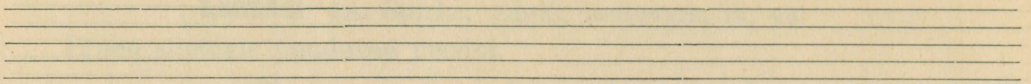


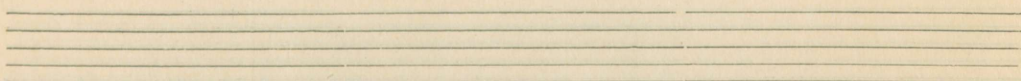
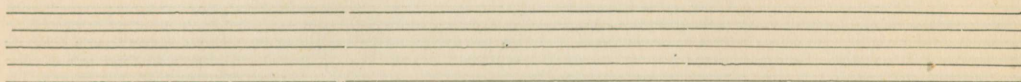
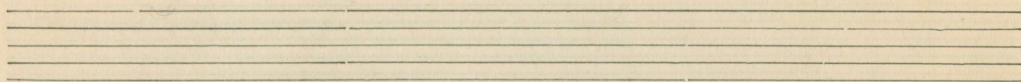
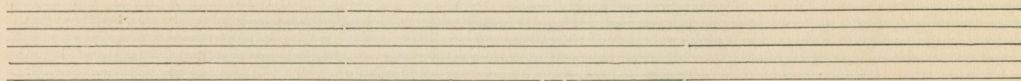
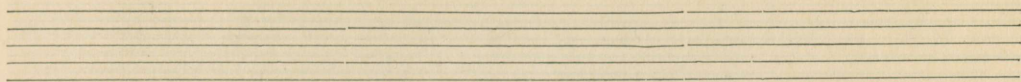
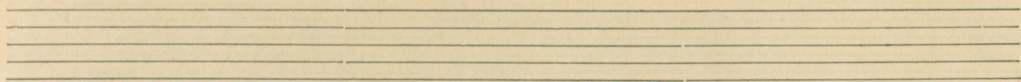
nii

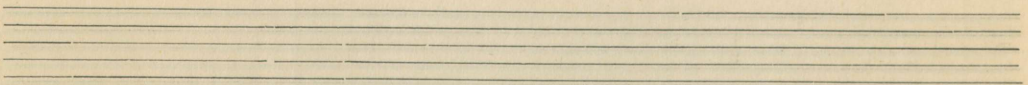
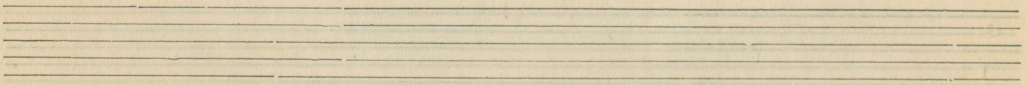
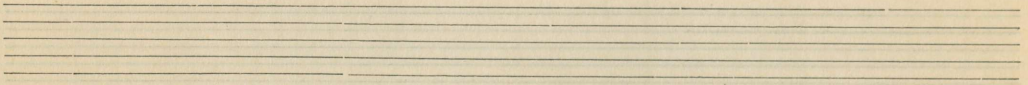
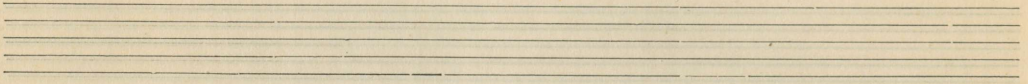
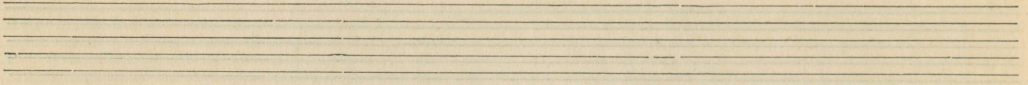
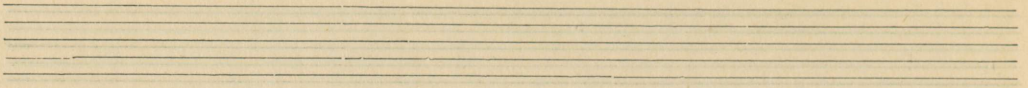


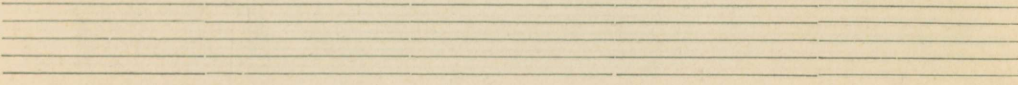
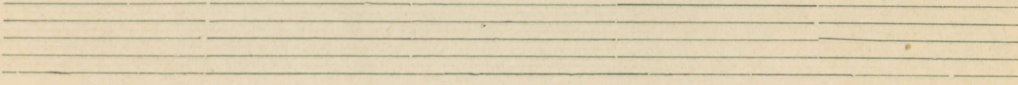
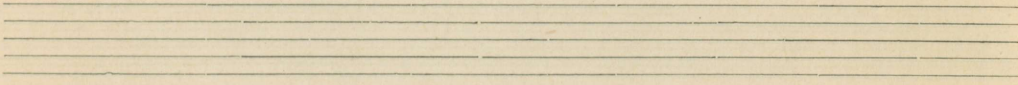
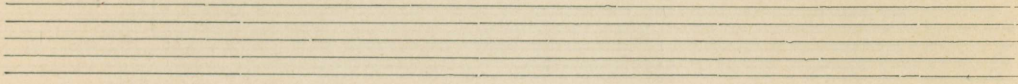
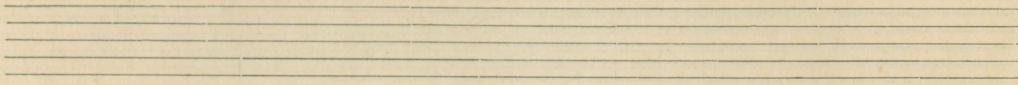
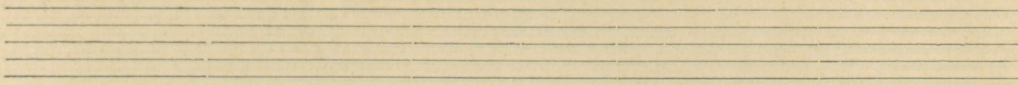
Märgin siia üles kõik noodimärgid, mida olen läbivõetavate laulude juures tähele pannud, ja küsin õpetajalt nende tähendust.

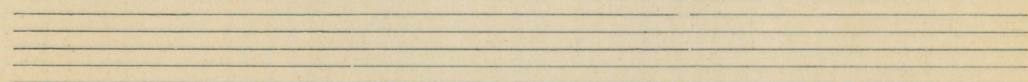
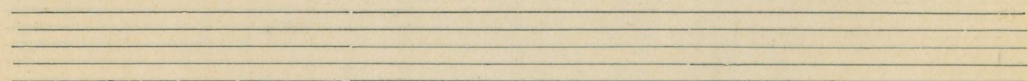
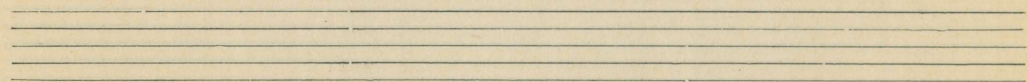
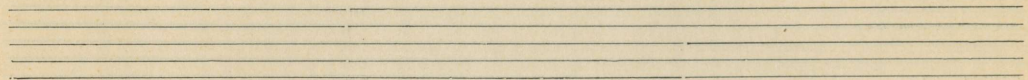
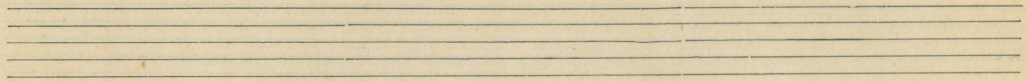
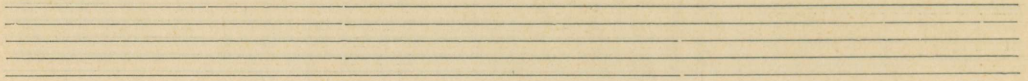


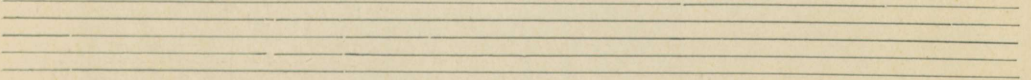
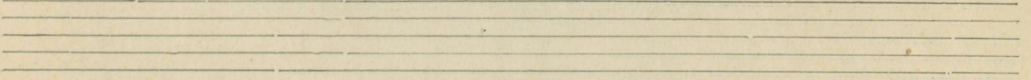
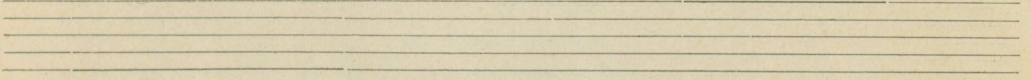
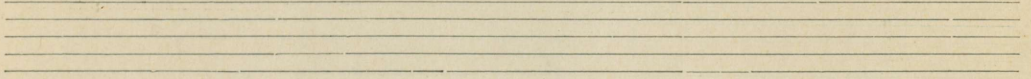
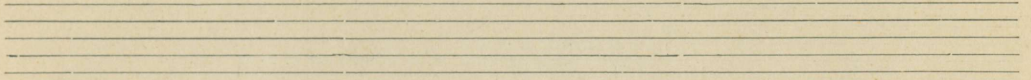
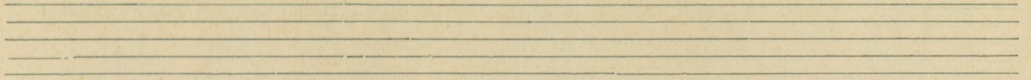


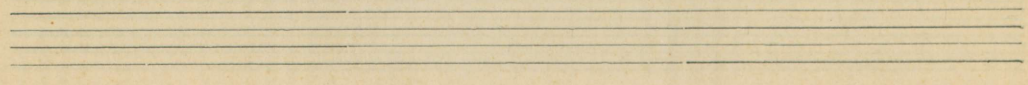
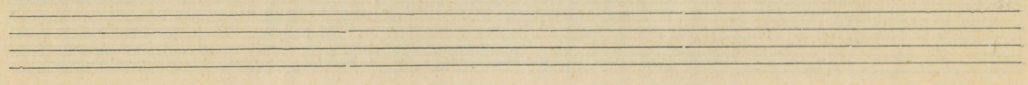
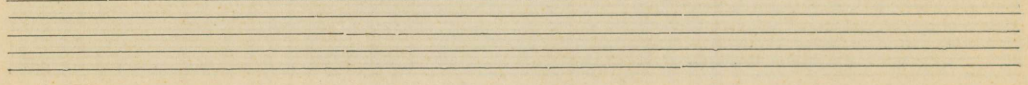
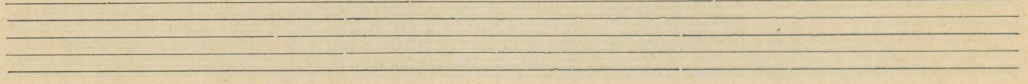
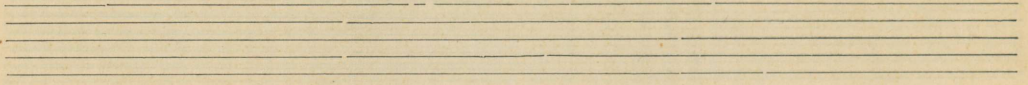
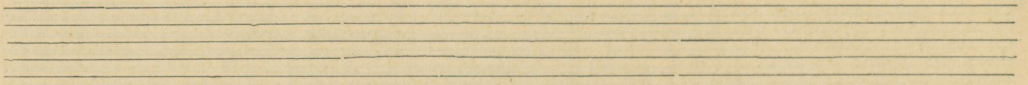












A-9384

