

DORPATER  
TELEPHON-FABRIK

AKTIEN-GESELLSCHAFT

EESTI • TARTU • ALLEE-STR. 9—11

CABLE ADDRESS: «TELEPHONFABRIK — TARTU»  
TELEPHONE 324

1931

# DORPATER TELEPHON-FABRIK

AKTIEN-GESELLSCHAFT



EESTI · TARTU · ALLEE-STR. 9—11

CABLE ADDRESS: «TELEPHONFABRIK — TARTU»

TELEPHONE 234

1931.

«POSTIMEHE» TRÜKK, TARTUS 1931

6 42309748

## Index of numbers

Nos.	Code	Page	Nos.	Code	Page	Nos.	Code	Page	Nos.	Code	Page	Nos.	Code	Page
300	ukdel	1	322	ukeyl	8	355a	ukryw	31	384b	ukwyt	37	422	ukyut	39
301	ukdia	1	323	ukfam	8	355b	uksag	31	385	ukozi	28	423	ukyxo	39
301a	ulvij	1	324	ukomi	27	356	ukseo	31	386	ukpao	28	424	ukyyk	39
302	ukdon	2	325	ukoom	27	356a	ukshe	31	387	ukpek	28	425	ukyzi	39
302a	—	—	326	ukoro	27	357	uksik	31	388	ukphi	28	426	ukzaf	39
303	ukdux	2	326a	ukouv	27	357a	uksnu	31	389	ukpit	28	427	ukzeb	40
304	ukeby	3	327	ukgoe	14	357b	uksop	31	390	ukpow	28	428	ukzic	40
305	—	—	327a	ukgyz	14	358	uksum	31	390a	ukpus	28	429	ukzoo	40
305a	ukeir	6	328	uknoh	24	358a	uksvi	31	391	uldbo	44	430	ukzug	40
306	—	—	329	ukgun	14	359	ukswa	31	392	uldes	44	431	ukzyn	40
306a	ukena	6	329a	ukhar	14	360	uksyz	31	393	uldja	44	432	ulaav	40
306b	ukege	5	330	uknul	24	360a	uktaj	31	394	uldyi	45	433	—	—
307a	ukerc	6	331	uknys	24	361	uktyp	33	395	uleaw	45	434	ulaid	42
308	ukfuj	12	332	ukoba	24	362	uktzo	33	396	ulecy	45	435	ulamp	42
308a	ukgeh	13	333	ulyni	26	363	ukuau	33	397	uleeh	45	436	ulane	42
309	ukgaw	12	334	uklat	21	364	ukueg	33	398	ulega	45	437	ulapt	42
309a	ukgiv	13	335	—	—	364a	ukugu	33	399	uleht	45	438	ulars	42
310	ukhee	15	336	uklem	21	365	ukuha	33	399a	uleiv	45	439	—	—
311	ukhis	15	337	uklov	21	366	ukuio	34	400	uleki	45	440	ulaty	42
312	ukhod	15	338	uklua	21	367	ukulo	34	400a	ulelp	45	441	ulayg	42
313	ukhui	15	339	uklye	21	368	ukuny	34	401	ulemu	46	442	ulaza	42
314	ukiap	15	340	ukmau	21	369	ukuof	34	402	ulepo	46	443	ulbas	42
315	ukiew	15	341	ukkiw	18	370	ukups	34	403	uleun	46	444	ulbel	42
310a	ukike	15	342	ukklu	18	371	ukuri	34	404	uleyz	47	445	—	—
311a	ukilf	15	342a	ukkol	18	372	ukusd	34	405	ulfar	47	446	ulbfy	42
312a	ukimy	15	343	ukkad	19	372a	ukuur	34	405	ulfod	48	447	ulbia	42
313a	ukins	15	344	ukkyc	20	373	ukpym	29	407	uldpj	44	448	ulbje	42
314a	ukirb	15	345	uktex	32	374	ukrax	29	408	ulgsu	49	449	ulbon	42
315a	ukisu	15	346	uktju	32	375	ukrey	29	409	ulibi	51	450	ulbpu	42
316	ukiti	16	346a	uktli	32	376	ukriu	29	410	uliep	51	451	ulabu	41
317	ukiuz	16	346b	uktma	32	377	ukuve	35	411	uligs	51	452	uladz	41
318	ukivt	16	347	uktob	32	378	ukuxt	35	412	ulihö	51	453	ulaec	41
319	ukiwo	16	348	uktse	32	379	ukuyb	35	413	ulilu	51	454	ulagi	41
320	ukiyd	16	349	uktuw	32	379a	ukvai	35	414	ulimf	52	455	ulahr	41
321	ukjab	16	350	ukvot	36	380	ukvej	35	415	ukyde	39	456	ukess	7
316a	ukjer	16	350a	ukvup	36	381	ukvix	35	416	ukyez	39	457	ukewt	7
317a	ukjim	16	351	ukvyf	36	381a	ulvla	35	417	ukyhs	39	458	ulbto	43
318a	ukjoc	16	352	ukwaz	36	382	ukwig	37	418	ukyin	39	459	ulbux	43
319a	ukjue	16	353	ukwen	36	383	ukwou	37	419	ukyku	39	460	ulbxi	43
320a	ukjya	16	354	ukror	31	384	ukwre	37	420	ukyla	39	461	ulcby	43
321a	ukkaa	16	355	ukruh	31	384a	ukwub	37	421	ukyra	39	462	ulcev	43

*Est. A*

Tartu Riikliku Ülikooli  
Raamatukogu  
20921

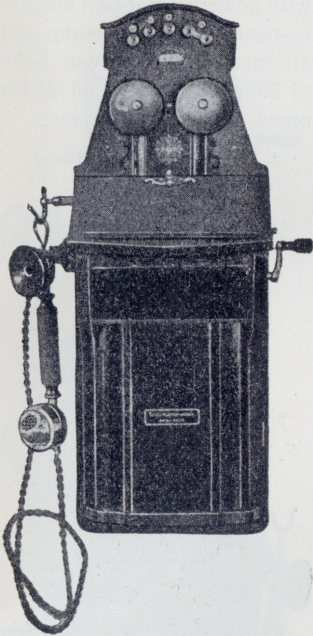
ARHIIVKOGU

Nos.	Code	Page	Nos.	Code	Page	Nos.	Code	Page	Nos.	Code	Page	Nos.	Code	Page
463	ulcfo	43	504	ulkos	54	546	uldoz	44	587	ulmay	55	629	ulsha	58
464	ulcge	43	505	ulkta	54	547	ulduj	44	588	ulmba	55	630	ulsio	58
465	ulcir	43	506	ullfa	54	548	ulerr	46	589	ulmce	55	631	ulsny	58
466	ulcna	43	507	ulkbe	53	549	ulewk	46	590	ulmeu	55	632	ulsof	58
467	ulcoi	43	508	ulkci	53	550	ulfco	47	591	ulmif	55	633	ulsri	58
468	ulcyl	43	509	ulfui	48	551	ulfee	47	592	ulmmi	55	634	ulsur	58
469	uldam	43	510	ulfxa	48	552	ulfhu	47	593	ulmmo	55	635	ulsve	58
470	ukkep	17	511	ulgap	48	553	ulfis	47	594	ulmro	55	636	ulsyb	58
471	ulpag	57	512	ulvok	60	554	ulfst	48	595	ulmuv	55	637	ultai	58
472	ulpeo	57	513	—	—	555	ulgew	48	596	ulnao	55	638	ultej	58
473	ulphe	57	514	—	—	556	ulgih	49	597	ulndy	56	639	—	—
474	ulpik	57	515	—	—	557	ulgke	49	598	ulnek	56	640	ultot	59
475	ulpnu	57	516	ulhue	50	558	ulgmy	49	599	ulnhi	56	641	ultyf	59
476	ulpop	57	517	—	—	559	ulgoa	49	600	ulnit	56	642	ulvyu	58
477	ulpum	57	518	—	—	560	ulgti	49	601	ulnow	56	643	ulwad	58
478	ulpyr	57	519	ululd	59	561	ulgwo	50	602	ulnpa	56	644	ulwez	58
479	ulpzy	57	520	uluig	59	562	ulgyd	50	603	ulnus	56	645	ulwin	58
480	ulguz	50	521	uludi	59	563	uldwu	44	604	ulnwe	56	646	ulwoy	58
481	ulhab	50	522	uluen	59	563a	uldxe	44	605	ulnym	56	647	ulwra	59
482	ulher	50	523	ulojo	59	564	ulhoc	50	606	ulnzu	56	648	ulwut	59
483	ulhim	50	524	—	—	565	ulhya	50	607	uloax	56	649	ulwyk	59
484	ulisy	53	525	ultsa	59	566	uliud	53	608	uloca	56	650	ulxaf	59
485	ulite	53	526	ukedd	4	567	uliyc	53	609	ulodo	56	651	ulxcu	59
486	ulkau	53	527	ukyad	38	568	uljat	53	610	ulome	56	652	ulxeb	59
487	uluaz	59	528	ukmef	22	569	uljem	53	611	ulont	56	653	ulxfe	59
488	uluch	59	529	ukmip	22	570	uljov	53	612	uloor	56	654	ulxca	59
489	ulugy	59	530	ukmos	22	571	uluja	53	613	ulorg	56	655	ulxca	59
490	uluhl	59	531	ukmuc	23	572	ulkip	54	614	ulosi	56	656	ulxoc	59
491	ultix	59	532	ukmyv	23	573	ulkty	54	615	ulots	56	657	ulxpi	59
492	ultjy	59	533	uknak	23	574	ulkuc	54	616	ulouh	56	658	ulxug	59
493	ultle	59	534	uknet	23	575	ulkvo	54	617	ulowd	56	659	ulxyv	59
494	ultno	59	535	uknib	23	576	ulkyv	54	618	uloyw	56	660	ulxyn	59
495	ultup	59	536	ukoce	25	577	ullak	54	619	ulpvi	57	705	uluyt	5
496	ultxu	59	537	ukoou	25	578	ulldu	54	620	ulpwa	57	706	ulyac	23
497	uljye	53	538	ukohn	25	579	ullet	54	621	ulraj	57	707	ulyda	22
498	ukfes	9	539	ukoif	25	580	ullib	54	622	ulrex	57	708	ulyed	22
499	ukfil	10	540	uksyr	31	581	ulloh	54	623	ulrob	57	709	ulyft	61
500	ukoks	26	541	ukfoz	11	582	ulpe	54	624	ulruw	57	710	ulyhm	61
500a	—	—	542	uliiw	51	583	ultry	54	625	ulryp	57	711	ulyiz	28
501	ulvuf	26	543	uliol	52	584	ullul	55	626	ulsan	58	712	ulyky	28
502	ulure	61	544	ulirt	52	585	ullwi	55	627	ulseg	58			
503	ulkef	54	545	uldil	44	586	ullys	55	628	ulsgu	58			

## Index.

	Page.
I. Telephone apparatus for induction calls . . . . .	1— 7
II. Portable telephone apparatus . . . . .	8—11
III. Telephone apparatus for central battery service . . . . .	12
IV. Telephone apparatus for all-automatic telephone plants . . . . .	13
V. Telephone apparatus, interphone system, worked by batteries for reciprocal calls . . . . .	14
VI. Push button line selector apparatus with battery call for single lines . . . . .	15
VII. Combined telephone apparatus with line selector worked by push buttons . . . . .	16
VIII. Test apparatus for try-outs of line disturbances . . . . .	17
IX. Central switch board "Standard" . . . . .	18
X. Cupboard shaped drop switch boxes, to be fixed on walls, with call drops and stop signals for single and double lines . . . . .	21—24
XI. Portable field calling drop boxes "Vertical System" . . . . .	25—26
XII. Intermediate station switches . . . . .	26
XIII. Telephone switches for single and double lines . . . . .	28
XIV. Translators . . . . .	29
XV. Microtelephones . . . . .	30—31
XVI. Earphones . . . . .	32
XVII. Inductors . . . . .	33
XVIII. Bell-alarms . . . . .	34
XIX. Induction coils . . . . .	35
XX. Microphone shells . . . . .	39
XXI. Condensers . . . . .	37
XXII. Main distributor frames . . . . .	38
XXIII. Safety devices for telephone exchanges . . . . .	39—40
XXIV. Lightning arresters for telephone connections . . . . .	41
XXV. Cable terminal boxes . . . . .	42
XXVI. Cable distributing boxes . . . . .	43
XXVII. Telephone appliances and accessories for telephone exchanges . . . . .	44—52
XXVIII. Fittings and accessories for telephone apparatus . . . . .	53—58
XXIX. Cords . . . . .	59

## I. Telephone apparatus for induction calls.



*No. 300, 301, 301-a.*

No. 300. Wall-suspended desk telephone, large model with lightning protector for long distance, oak casing with specially strong five-part magneto-electric alarm generator and alternating current call bells of 1000 ohm. Rings on 35000 ohms conductor resistance.

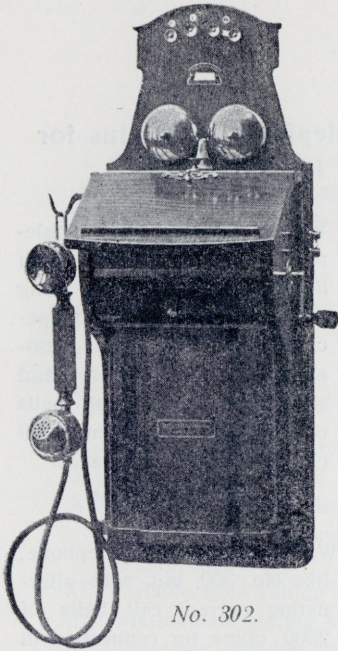
Weight: 9,6 kos.

No. 301. Wall-suspended desk telephone, like No. 300, but with alternating current call bells of 2000 ohms for connection in multiple arc.

Weight: 9,6 kos.

No. 301-a. Wall-suspended desk telephone, like No. 301, but with alternating current call bells of 2500 ohms for connection in multiple arc.

Weight: 9,6 kos.



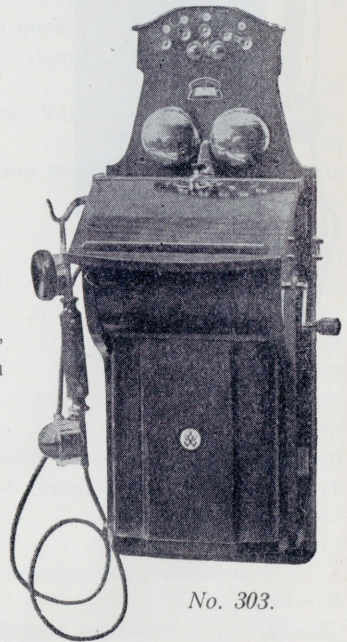
No. 302.

No. 302. Wall-suspended desk telephone for district and local service with powerful four-part magneto-electric alarm generator and alternating current call bells of 300 ohms. Rings on 25000 ohms conductor resistance.

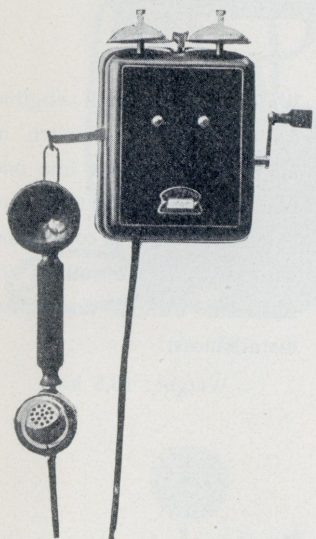
Weight: 8,8 kos.

No. 303. Wall-suspended desk telephone, like No. 302, but with built-in lightning arrester.

Weight: 8,8 kos.



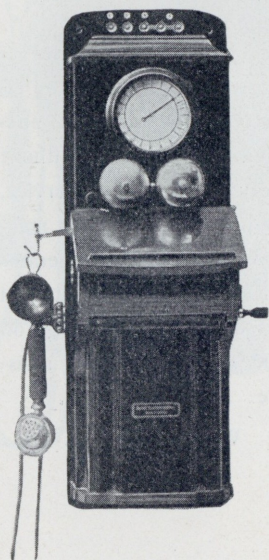
No. 303.



No. 304. Wall telephone in black enameled metal casing, without battery box, for local service, with powerful three-part magneto-electric alarm generator and alternating current call bells of 300 ohms. Rings on 20000 ohms conductor resistance.

Weight : 4,2 kos.

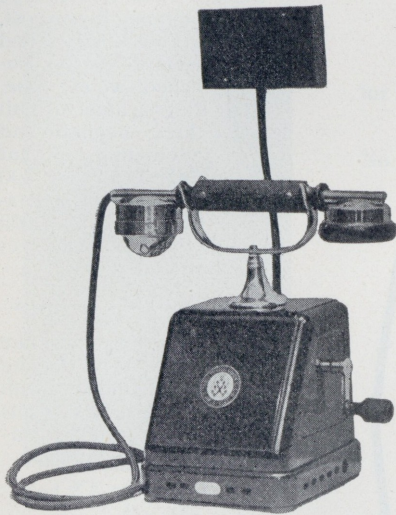
*No. 304.*



*No. 526.*

No. 526. Wall telephone with eligible calls. Enables to switch in up to 15 telephones into one line, where each of these apparatus may get in connection with any of the others of this set, without individual disturbances.

Weight: 13,5 kos.



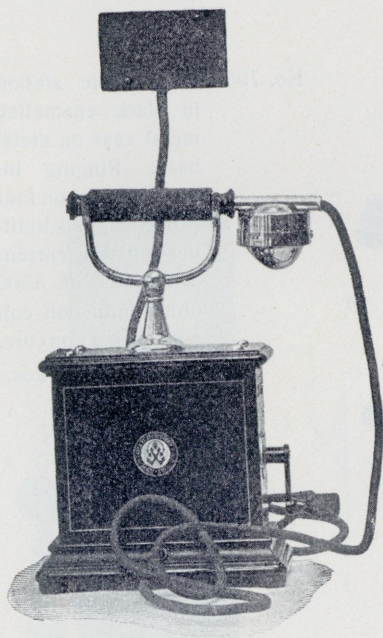
*No. 705.*

No. 705. Desk table station in black enamelled metal case on metal base. Ringing inductor works on four strong magnets, built-in alternating current call bells of 1500 ohms, induction coil with closed iron core.  
Weight: 4,5 kos.



*No. 306-b.*

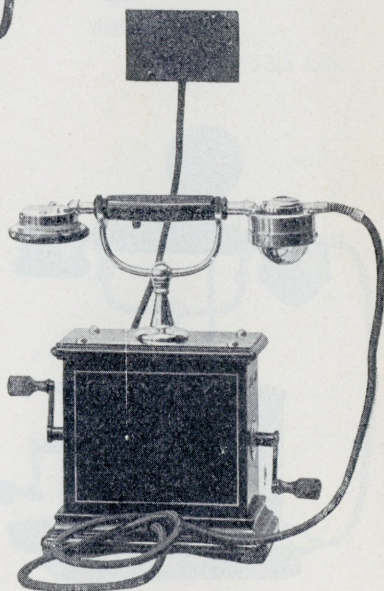
No. 306-b. Table station with black enamelled metal casing, opening up to facilitate inspection of parts. Ringing inductor with four magnets. Built-in alternating current call bells of 1000 ohms. Calls on 2500 ohms conductor resistance.  
Weight: 5,3 kos.



*No. 305-a—306-a.*

No. 307-a. Table station, like No. 306-a, but with double handle.

Weight: 5,3 kos.



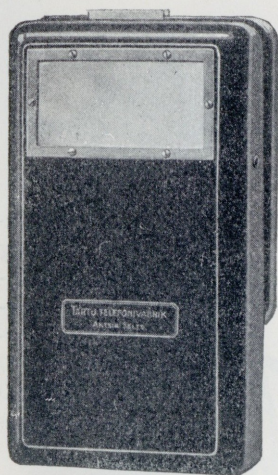
*No. 307-a.*

No. 305-a. Table station, type German Reichspost, in black enameled metal case on polished wood base. Ringing inductor with three magnets and alternating current call bells of 300 ohms within apparatus. Works on 20000 ohms conductor resistance.

Weight: 5,25 kos.

No. 306-a. Table station, like No 305-a, but having ringing inductor with four magnets. Calls on 25000 ohms conductor resistance.

Weight: 5,3 kos.



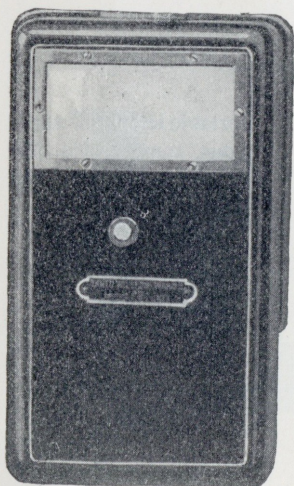
No. 456.

### Telephone slot machines

for public call rooms, to be connected with ordinary telephones.

No. 456. Telephone slot machines in metal casing with elastic spring, which, through drop of coin, causes battery contact breaks on the trunk line, transmitting a cracking signal to the central station, indicating paying of amount.

Weight: 2 kos.



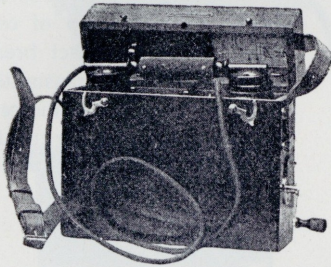
No. 457.

No. 457. Telephone slot machines, like No. 456, but with buzzer, causing on pressure of the button a hum to be transmitted to central.

Weight: 2 kos.

Notice: These telephone slot machines are manufactured for any special size of coins or metal slabs.

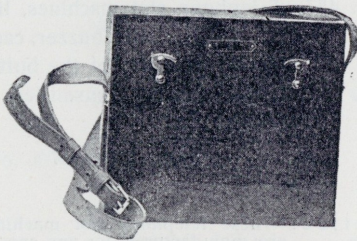
## II. Portable Telephone Apparatus.



*No. 322.*

- No. 322. Portable telephone apparatus in oaken casing with leather straps. Inductor with three magnets. Alternating current alarm bells of 300 ohms. Rings on 20000 ohms conductor resistance.

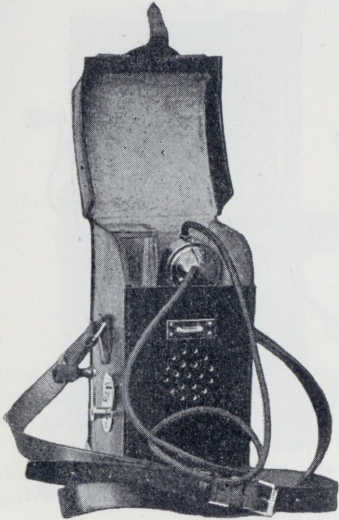
Weight: 5 kos.



*No. 323.*

- No. 323. Portable telephone apparatus, same as No. 322, without magneto, but with buzzer.

Weight: 3,2 kos.



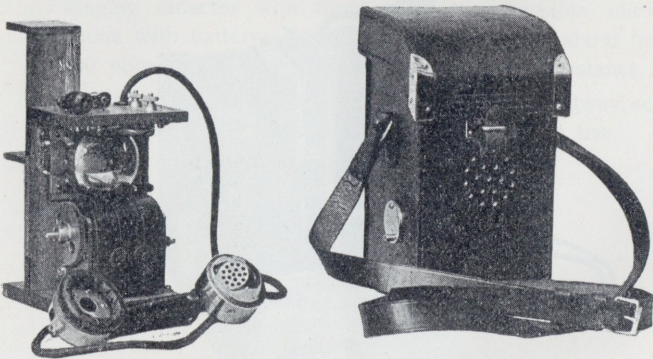
*No. 498.*

No. 498. Portable field station in strong leather case with ringing inductor of three magnets. Microtelephone with battery contact, alternating current alarm bells of 300 ohms conductor resistance.

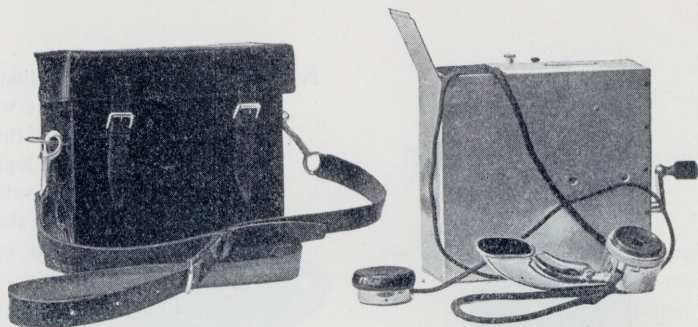
Everything mounted on an oaken frame, to have all parts easily accessible.

Outside measurements:  
270×160×150 mm.

Weight with case : 4,1 kos.



*No. 498.*



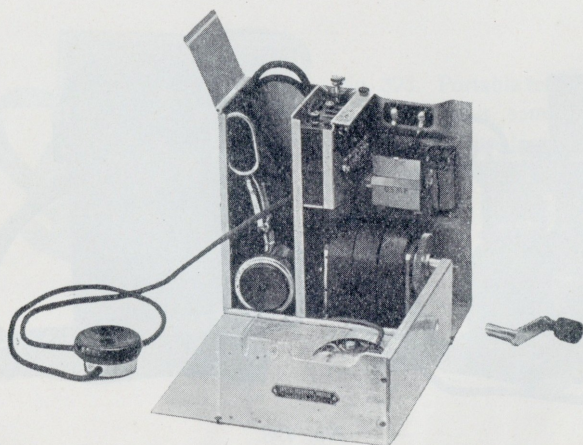
*No. 499.*

No. 499. Portable field apparatus in leather case with ringing inductor of three magnets, combined telephone receiver and additional head-phone. 500 ohms alternating current alarm. Rings on 20000 ohms conductor resistance.

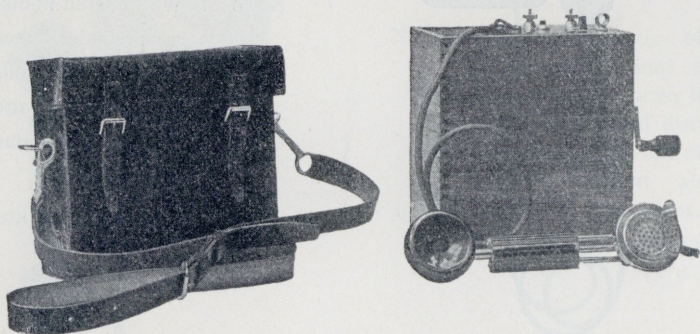
Apparatus is mounted in aluminum casing, provided with hinges, allowing opening up with one turn of the hand, leaving all parts distinctly and easily accessible.

Outside measurements :  $225 \times 245 \times 105$  mm.

Weight with leather case : 4,8 kos.



*No. 499.*



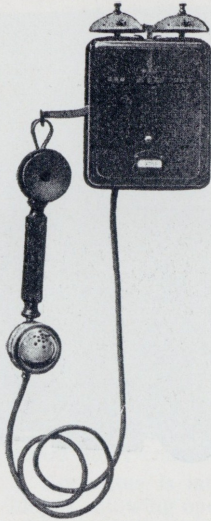
*No. 541.*

No. 541. Portable telephone apparatus, light model, in leather case. Ringing inductor with three magnets, collapsible microtelephone with battery contact, alternating current alarm bells of 300 ohms. Works on 20000 ohms conductor resistance.

This apparatus is especially suitable for railway service, also for tests and location of faults in telephone lines.

Weight: 4,5 kos.

### III. Telephone apparatus for central battery service.



*No. 308.*

No. 308. Wall station in black enamelled metal case on nickelled brass base with alternating current alarm of 1000 ohms.

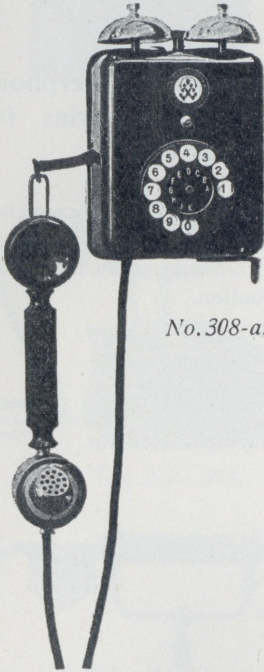
Weight: 2,4 kos.



*No. 309.*

No. 309. Table desk station in black enamelled metal case with built-in alternating current alarm of 1000 ohms.

Weight: 3 kos.

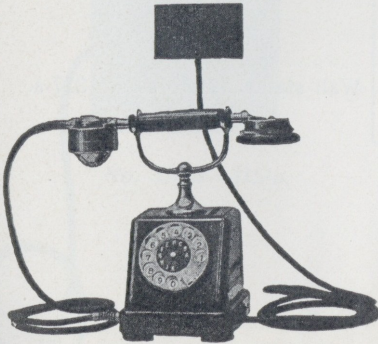


*No. 308-a.*

#### IV. Telephone apparatus for all-automatic tele- phone plants.

No. 308-a. Wall station in black enamelled metal case on nickelled brass base with numbered disc for automatic calls and alternating current alarm bells of 1000 ohms.

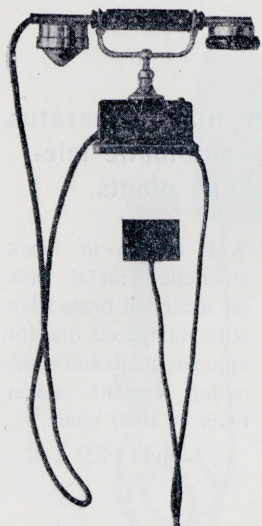
Weight: 2,9 kos.



*No. 309-a.*

No. 309-a. Table desk station in black enamelled metal case with numbered disc for automatic calls and built-in alternating current alarm bells of 1000 ohms.

Weight: 3,5 kos.



*No. 327.*

**V. Telephone apparatus, interphone system, worked by batteries for reciprocal calls.**

No. 327. Table station in black enamelled metal case with microtelephone, induction coil, fork-rest switch, buzzer and call button.

Weight: 1,35 kos.

No. 329. Wall station, same as No. 327.

Weight: 1,1 kos.



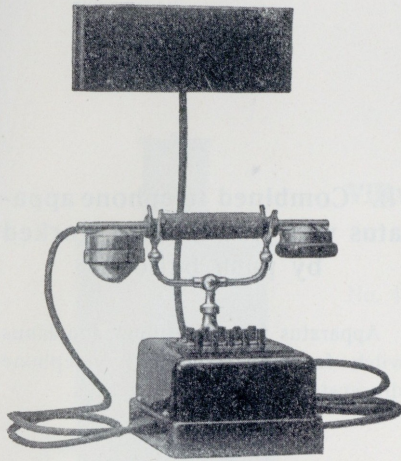
*No. 329.*

No. 327-a. Table station, like No. 327, but without buzzer, for central battery service, as branch line apparatus.

Weight: 1,35 kos.

No. 329-a. Wall station, same as No 327-a.

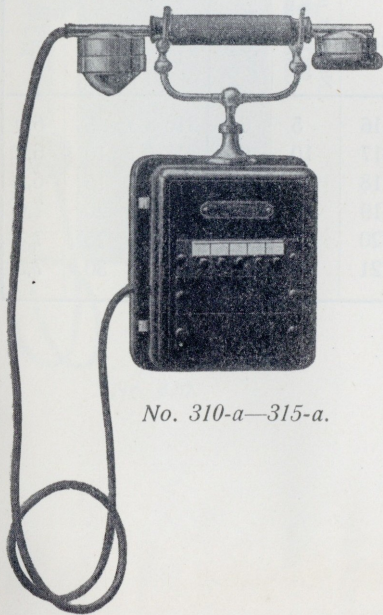
Weight: 1,1 kos.



No. 310—315.

## VI. Push button line selector apparatus with battery call for single lines.

Interphones without local permit central station, easy telephone connection between the several departments of a spacious establishment.



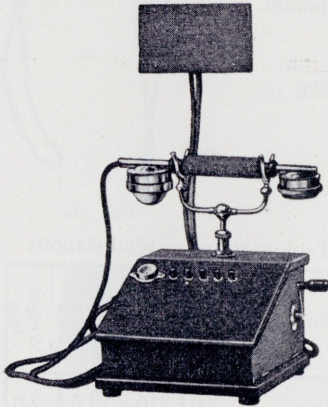
No. 310-a—315-a.

Table stations      Wall stations

No.	Number of connections	Weight kos.	No.	Number of connections	Weight kos.
310	5	2,0	310-a	5	2,0
311	10	2,1	311-a	10	2,1
312	15	2,3	312-a	15	2,3
313	20	2,5	313-a	20	2,5
314	25	2,9	314-a	25	2,9
315	30	3,3	315-a	30	3,3

## VII. Combined telephone apparatus with line selector worked by push buttons.

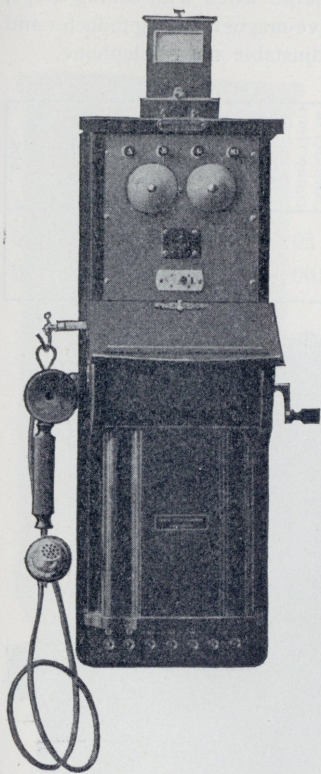
Apparatus for single lines and Janus switch for connection with telephone wire system with induction calls.



*No. 316—321.*

Table apparatus.

Nos	Number of exchange connections	Weight kos.	Nos	Number of exchange connections	Weight kos.
316	5	6,0	316-a	5	6,0
317	10	6,2	317-a	10	6,2
318	15	6,5	318-a	15	6,5
319	20	7,0	319-a	20	7,0
320	25	7,3	320-a	25	7,3
321	30	7,5	321-a	30	7,5



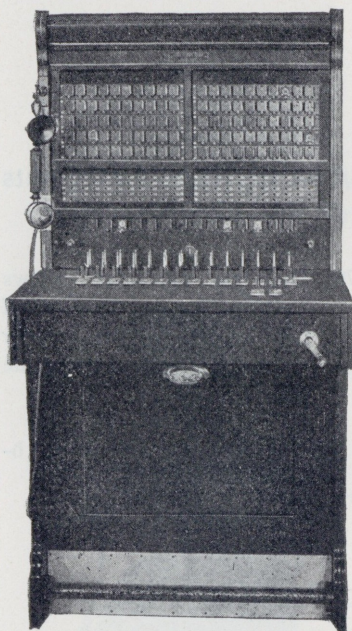
No. 470.

### VIII. Test apparatus for try-outs of line disturbances.

No. 470. The test apparatus allows examination and location of troubles within the interior and exterior lines of telephone wire systems on:

- 1) broken lines
- 2) grounding of a- or b-conductors.

Weight: 13 kos.



No. 341—342.

No. 342-a. For larger plants we manufacture central switch boards system „Multiple“ with controlling system for one hundred partakers and with multiple system ranging up to 1600 numbers.

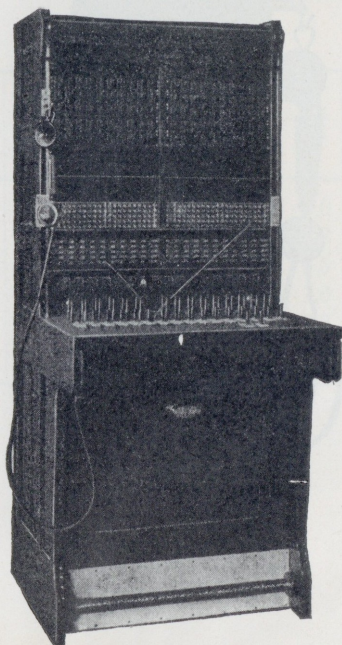
Weight: 100 kos.

Notice: On special request our central switch boards may be supplied with automatic reversible signals.

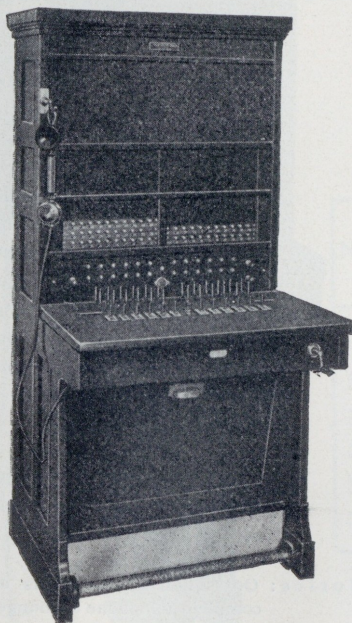
## IX. Central switch board „Standard“.

For double wires with calling drops, with five-magnet ringing inductor and adjustable micro-telephone.

Nos	Number of connections	Number of double cords	Measurements in mm.	Weight kos.
341	50	10	1578×700×585	80
342	100	14	1578×700×585	90



No. 342-a.



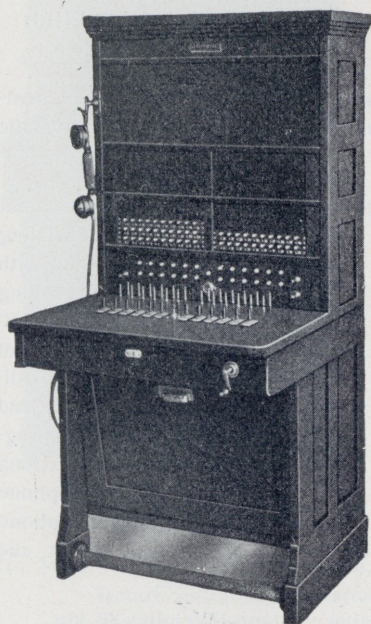
*No. 343.*

### **Cupboard shaped switch boxes „Standard“**

with electric light signals for central microphone battery, automatic call and stop signals.

No. 343. Incandescent lamp case for 50 double lines consisting of an oakwood casing with 50 call lamps, 50 calling jacks, 20 stop lamps, 50 calling relays, 10 pairs of connecting cords, 10 call-and speaking keys, call- and guard-control lamps, ringing inductor with 5 strong magnets, microtelephone with adjustable telephone direct current alarm and call switch.

Weight: 83 kos.



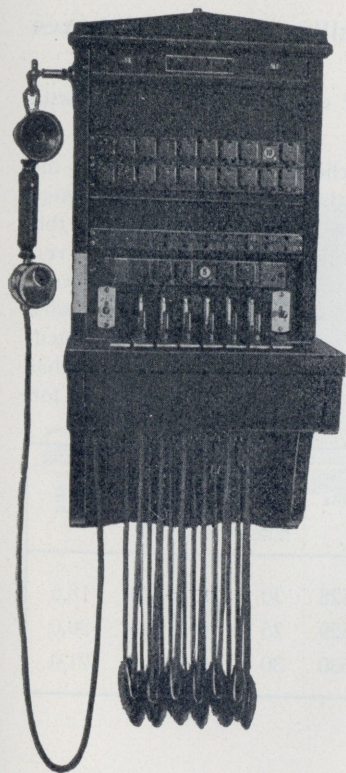
*No. 344.*

No. 344. Cupboard shaped incandescent lamp switch box for one hundred double lines, consisting of an oakwood casing with 100 call lamps, 100 calling jacks, 100 calling relays, 24 control lamps, 12 pairs of connecting cords, 12 calling- and speaking keys, call- and guard- control lamps, ringing inductor with five strong magnets, switch-in with adjustable phone, direct current alarm and call switch.

Weight: 95 kos.

Normal working tension 24 volts for above described switch boards.

Notice: On request special offers on complete telephone exchanges of any kind and size.



X. Cupboard shaped drop switch boxes, to be fixed on walls, with call drops and stop signals for single and double lines.

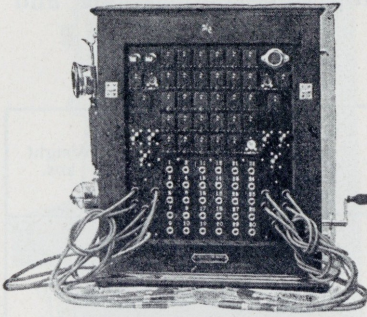
Nos.	Number of connections	Number of double cords	Weight kos.
334	10	4	25,5
336	15	5	27,0
337	20	6	28,5
338	25	6	30,0
339	30	8	32,0
340	40	8	35,0

No. 334—340.

## Calling drop switch boxes „Vertical system“.

for single and double lines with  
call and stop drops.

A characteristic of this type is the  
continous possibility to enlarge  
these drop call boxes. For this  
purpose there are provided ver-  
tical units, i. e. drops and plug-  
jacks mounted on metal rails,  
which may be added as required,  
until the used drop call box has  
reached its capacity provided for.

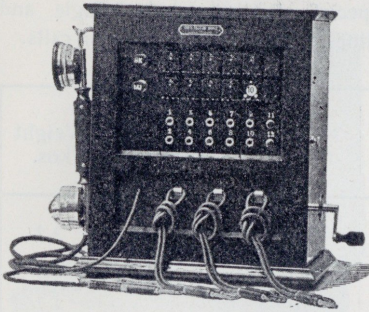


*No. 528—530.*

Nos	Number of lines	Number of double cords	Complete at	Weight kgs.
528	20	5	30	18,5
529	25	6	30	20,0
530	30	6	—	21,0

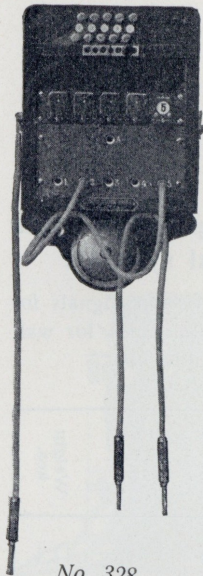
## Calling drop switch boxes „Vertical system“.

without special stop signals for  
single and double lines for wall  
and table use.



No. 531—535.

Nos	Number of lines	Number of double cords	Complete at	Weight kos.
531	10	3	16	11,1
532	12	4	16	11,5
533	16	4	—	12,4
534	20	5	24	14,5
535	24	5	—	15,4

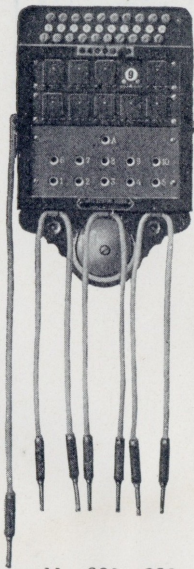


No. 328.

### Calling drop switch boxes

without special stop signal for single and double lines for battery or inductor calls.

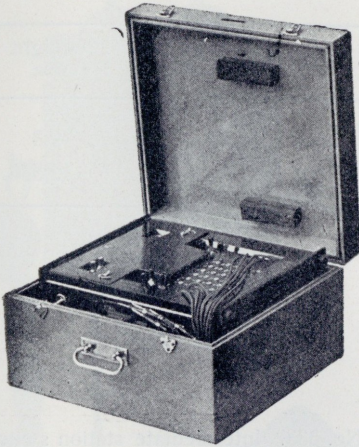
Nos	Number of lines	Number of double cords	Weight kos.
328	5	2	3,7
330	8	3	4,5
331	10	3	4,7
332	15	4	6,0



No. 330—332.

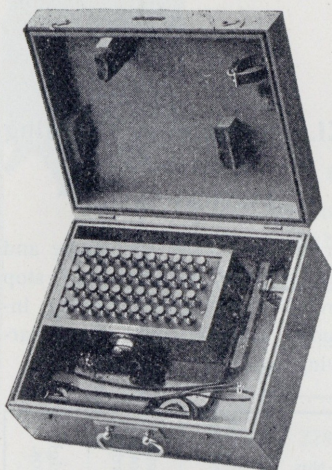
## XI. Portable field calling drop boxes. „Vertical System“

in wooden case for single and double lines, with call and stop drops, four-magneto ringing inductor, microtelephone and carrying case.



*No. 536—539.*

Nos	Number of connections	Number of double cords	Weight kos.
536	12	4	24,0
537	20	5	29,5
538	25	6	31,0
539	30	6	32,8

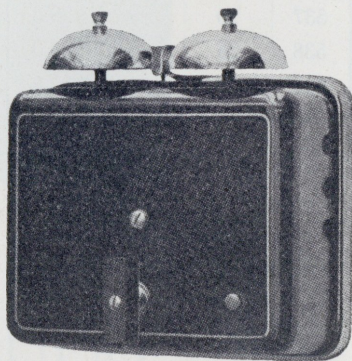


*No. 500—501.*

### Portable field selective case

with numbered keys in wooden box with combination microtelephone for phone call (buzzer call) in carrying case.

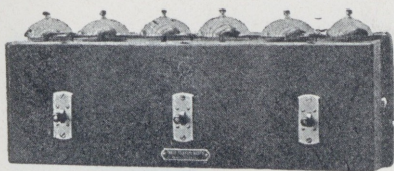
Nos	Number of lines	Weight kos.
500	6	9,3
501	10	12,5



*No. 333.*

No. 333. Intermediate station switch M. 0.7 in black enameled metal case with call-back arrangement.

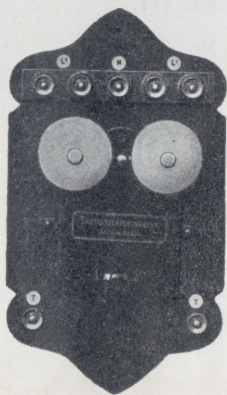
Weight: 2 kos.



No. 324.



No. 326-a.



No. 325—326.

## XII. Intermediate station switches

to be used with intermediate telephone apparatus.

No. 324. Intermediate station switch for three double lines with three alternating current alarms of 1000 ohms each and three toggle switches.

Weight: 5,28 kos.

No. 325. Intermediate station switch for two double lines.

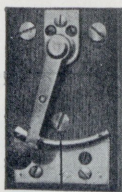
Weight: 1,4 kos.

No. 326. same apparatus, but for three single lines.

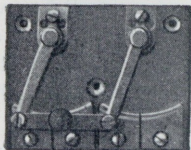
Weight: 1,4 kos.

No. 326-a. Intermediate station switch central battery system, with special feeding battery and direct current call for central battery service.

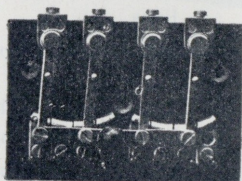
Weight: 5,2 kos.



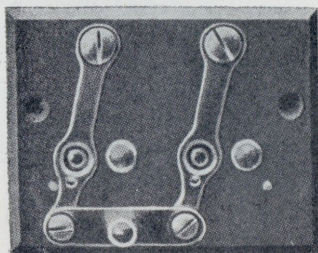
No. 385-388.



No. 389-390.



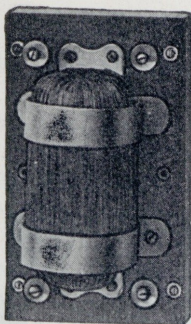
No. 390-a.



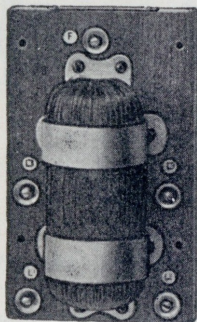
No. 711.

### XIII. Telephone switches for single and double lines.

No. 385.	Handle switch for 2 lines		
No. 386.	idem	3	"
No. 387.	"	4	"
No. 388.	"	5	"
No. 389.	"	2	double lines
No. 390.	"	3	" "
No. 390-a.	"	4	" "
No. 711.	"	2	" "
No. 712.	"	3	" "



No. 373.



No. 374.



No. 375—376.

#### XIV. Translators.

No. 373. Translator for translation from single to double lines.

Resistance of coil :

primary 150 ohms.

secondary 300 ohms.

Weight : 1,3 kos.

No. 374. Translator for translation of three calls on two double lines.

Resistance of coil :

primary 150 ohms.

secondary  $2 \times 150$  ohms.

Weight : 1,3 kos.

#### Choking coils.

No. 375. Choking coil with iron jacket.

Resistance of coil : 600 ohms.

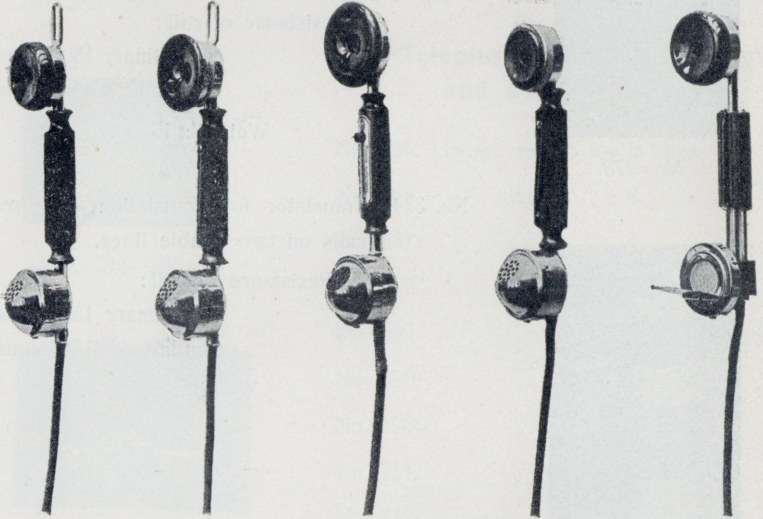
Weight : 0,15 kos.

No. 376. Choking coil with iron jacket.

Resistance of coil  $2 \times 400$  ohms.

Weight : 0,15 kos.

## XV. Microtelephones.



Microtelephone  
with ordinary  
ebonite  
earpiece

Microtelephone  
with adjustable  
earpiece and  
battery contact.

Microtelephone  
with button to  
adjust hearing.

Microtelephone  
with earphone  
in metal ring  
and battery  
contact.

Microtelephone  
with sliding-in  
handle and  
battery contact.

Notice: When ordering microtelephones please state number and kind of telephone.

**a) Microtelephones with four-cored cord.**

- No. 354. Microtelephones for local battery service, phone resistance 200 ohms, with hanger and plug for apparatus Nos 300 and 301.
- No. 355. Microtelephones with phone resistance of 150 ohms, hanger, no plug, for apparatus Nos 302, 303.
- No.355-a. Same as No. 355, but with phone resistance of 200 ohms.
- No.355-b. Same as No. 355, but with phone resistance of 60 ohms for central battery service wall apparatus No. 308.
- No. 356. Microtelephones with phone resistance of 150 ohms with plug, no hanger, for app. No. 302-a.
- No.356-a. Same as No. 356, but with phone resistance of 200 ohms.
- No. 357. Microtelephones without hanger or plug, with phone resistance of 150 ohms for table apparatus Nos 305, 306, and 307.
- No.357-a. Same as No. 357, but with phone resistance of 200 ohms.
- No.357-b. Same as No. 357, but with phone resistance of 60 ohms, for central battery service table apparatus No. 309.
- No. 358. Microtelephones with switch and battery contact in handle without hanger or plug, for portable field apparatus with induction call No. 322.
- No.358-a. Same as No. 358, but for portable field apparatus with buzzer call No. 323.
- No. 359. Microtelephone with battery contact, plug, and hanger.
- No. 540. Microtelephone with sliding-in handle, phone resistance of 150 ohms for portable field apparatus No. 541.

**b) Microtelephones with five-cored cord.**

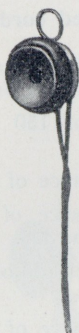
- No. 360. Microtelephone with differential winding, battery contact, plug, and hanger for commutators.
- No.360-a. Same as No. 360, but without battery contact in handle.

**Notice:** All our microtelephones are manufactured with hygienic speaking funnels, as may be seen from the cuts. On request we will furnish also celluloid funnels.

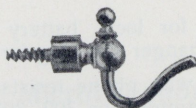
Weight: 0,6 kos.



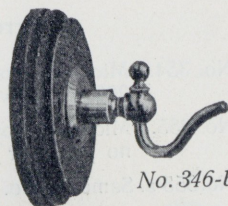
No. 345.



No. 346.



No. 346-a.



No. 346-b.

## XVI. Earphones.

No. 345. Earphone with handle, hanger, and cord.

Weight: 0,28 kos.

No. 346. Earphone with hanger and cord.

Weight: 0,2 kos.

No. 346-a. Hook for earphone.

Weight: 0,08 kos.

No. 346-b. Same as No. 346-a. but with wooden base.

Weight: 0,1 kos.

No. 347. Earphone with headband and cord.

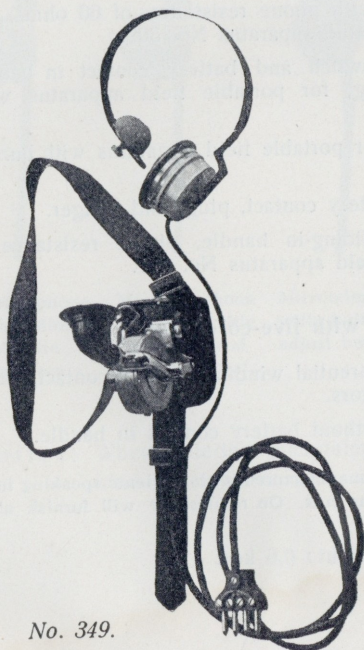
Weight: 0,4 kos.

No. 348. Earphone with differential winding, headband and cord.

Weight: 0,4 kos.

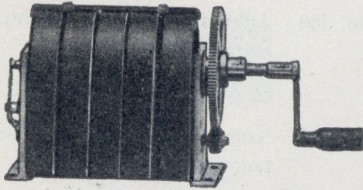
No. 349. Chest-microphone with headphone, including cord and plug, for central service.

Weight: 0,7 kos.

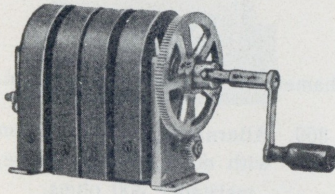


No. 349.

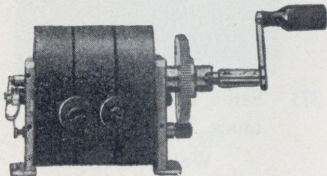
## XVII. Inductors.



No. 361.



No. 362.



No. 365.

- No. 361. Inductor with five magnets and Morse contact for apparatus Nos. 300, 301, 301-a.

Weight: 2,5 kos.

- No. 362. Inductor with four magnets and Morse contact for apparatus Nos. 302 and 303.

Weight: 2,2 kos.

- No. 363. Inductor with three magnets for apparatus No. 304.

Weight: 1,9 kos.

- No. 364. Inductor with four magnets for table apparatus Nos. 306-a. and 307-a.

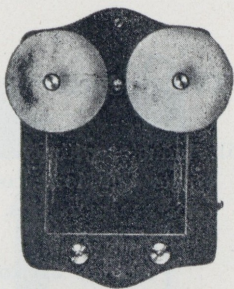
Weight: 2 kos.

- No. 346-a. Inductor with four magnets for apparatus Nos. 306-b and 705.

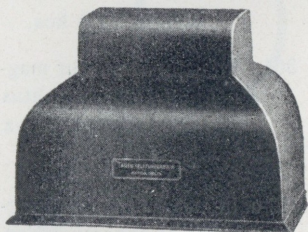
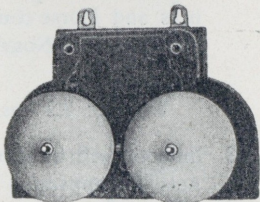
Weight: 2,3 kos.

- No. 365. Inductor with three magnets, smaller size, for portable telephone apparatus Nos. 322, 498, 499.

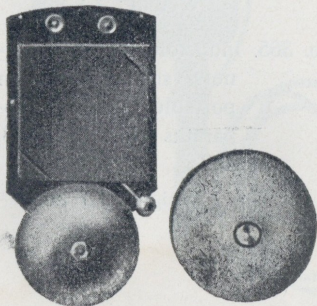
Weight: 1,7 kos.



No. 366 - 368.



No. 369-371.



No. 372-a.

No. 372.

## XVIII. Bell-alarms.

a) diameter of bell scales 70 m/m.

No. 366. Alternating current alarm, resistance 300 ohms.

Weight: 0,9 kos.

No. 367. Same as 366, but resistance 1000 ohms.

Weight: 0,9 kos.

No. 368. Same as 366, but resistance 2000 ohms.

Weight: 0,9 kos.

b) diameter of bell scales 110 m/m.

No. 369. Alternating current alarm with metal protecting case, resistance 300 ohms.

Weight: 2,4 kos.

No. 370. Same as before, but resistance 1000 ohms.

Weight: 2,4 kos.

No. 371. Same as before, but resistance 2000 ohms.

Weight: 2,4 kos.

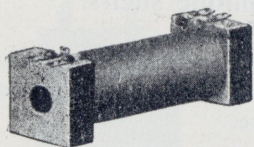
No. 372. Direct current alarm, resistance 20 ohms.

Weight: 0,3 kos.

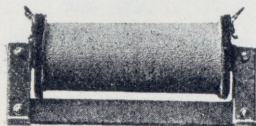
No. 372-a. Same as No. 372, resistance 10 ohms, diameter of bell scales 70 m/m.

Weight: 0,3 kos.

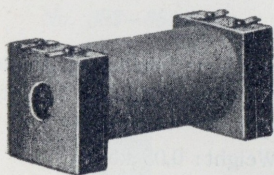
## XIX. Induction coils.



No. 377—379.



No. 379-a.



No. 380—381.

No. 377. Induction coil for local battery service.

Resistance: prim. 1,5 ohms  
sec. 75 "

Weight: 0,15 kos.

No. 378. Same for local battery service.

Resistance: prim. 1,0 ohms  
sec. 200 "

Weight: 0,15 kos.

No. 379. Same for local battery service.

Resistance: prim. 0,8 ohms  
sec. 200 "

Weight: 0,15 kos.

No. 379-a. Same for local battery service with closed iron core.

Resistance: prim. 1,4 ohms  
sec. 29 "

Weight: 0,10 kos.

No. 380. Same for central battery service.

Resistance: prim. 23 ohms  
sec. 16 "

Weight: 0,22 kos.

No. 381. Same for central battery service.

Resistance: prim. 26 ohms  
sec. 16 "

Weight: 0,22 kos.

No. 381-a. Same for central battery service with closed iron core.

Resistance: prim. 29 ohms  
sec. 32 "

Weight: 0,15 kos.

## XX. Microphone shells.



*No. 350—352—353.*

No. 350. Waved microphone shells. Diameter 36 m/m. with pellet filling for local battery service.

No.350-a. Flat microphone shells, diameter 55 m/m. with pellet filling for local battery service.



*No. 351.*

No. 351. Waved microphone shells. Type No. 5 Erikson, diameter 51 m/m., with pellet filling, for local battery service.

No. 352. Waved microphone shells. Diameter 56 m/m., with powder filling, for central battery service.

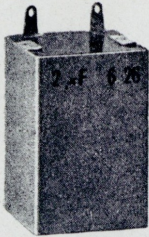


*No. 350-a.*

No. 353. Waved microphone shells. Diameter 56 m/m., with powder filling, for local battery service.

Weight: 0,05 kos.

## XXI. Condensers.



No. 382.

No. 382. Condenser 2 m. f.  
50×32,5×30 m/m. Weight: 0,1 kos.

No. 383. Same 1 m. f.  
50×45×15 m/m. Weight: 0,07 kos.  
50×32,5×30 m/m. Weight: 0,1 kos.



No. 383—384.

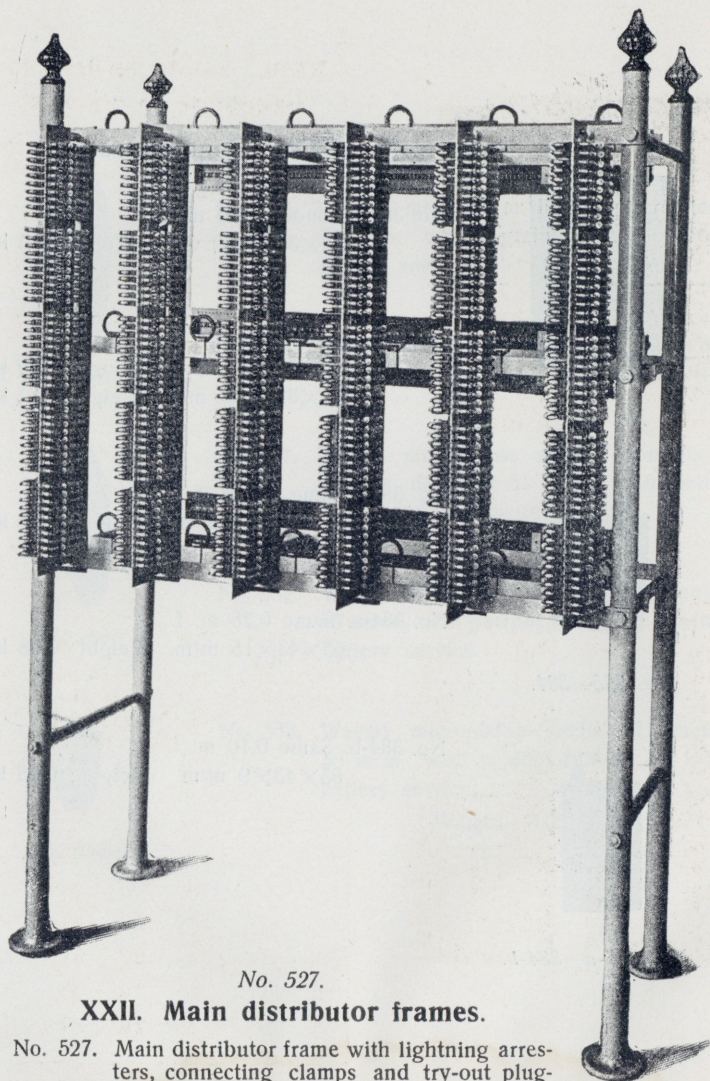
No. 384. Same 0,5 m. f.  
50×45×15 m/m. Weight: 0,07 kos.

No. 384-a. Same 0,25 m. f.  
65×43×15 m/m. Weight: 0,08 kos.



No. 384-a—384-b.

No. 384-b. Same 0,10 m. f.  
65×43×9 m/m. Weight: 0,05 kos.



*No. 527.*

**XXII. Main distributor frames.**

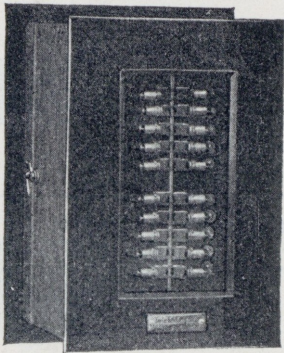
No. 527. Main distributor frame with lightning arresters, connecting clamps and try-out plugs for 300 double lines. Weight: 90 kos.

Notice: Main distributor frames in all sizes on demand.

### XXIII. Safety devices for telephone exchanges.

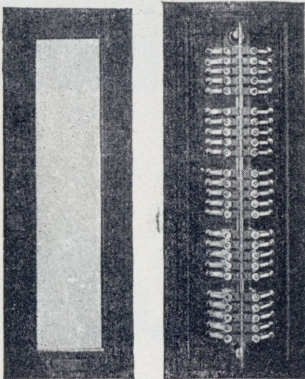
**Carbon lightning arresters in wooden case with detachable glass cover.**

For double lines with carbon lightning arrester and fine grain fuses.  
(Heating coils.)



*No. 415—420.*

Nos	Number of lines	Height mm.	Breadth mm.	Length mm.	Weight kos.
415	10	189	210	288	3,2
416	20	189	210	456	5,4
417	25	189	210	540	6,3
418	30	189	210	582	7,3
419	40	189	210	736	9,0
420	50	189	210	890	10,7

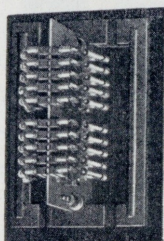
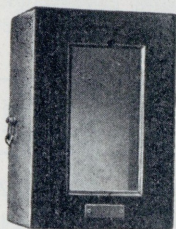


*No. 421—426.*

For double lines with carbon lightning arrester and coarse grain fuses.  
(Bose tubes.)

Nos	Number of lines	Height mm.	Breadth mm.	Length mm.	Weight kg.
421	10	189	210	288	3,2
422	20	189	210	456	5,4
423	25	189	210	540	6,3
424	30	189	210	582	7,3
425	40	189	210	736	9,0
426	50	189	210	890	10,7

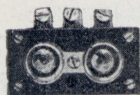
For double lines with carbon lightning arresters,  
fine and coarse grain fuses.



Nos	Number of lines	Height mm.	Breadth mm.	Length mm.	Weight kos.
427	10	189	210	288	3,8
428	20	189	210	456	6,2
429	25	189	210	540	7,3
430	30	189	210	582	8,5
431	40	189	210	736	10,6
432	50	189	210	890	12,7

No. 427—432.

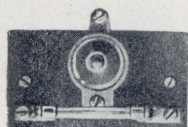
## XXIV. Lightning arresters for telephone connections.



No. 451.

No. 451. Plate lightning arrester for one double line.

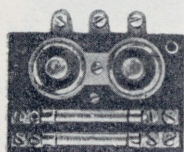
Weight: 0,1 kos.



No. 452.

No. 452. Same with coarse grain fuse for single line.

Weight: 0,1 kos.



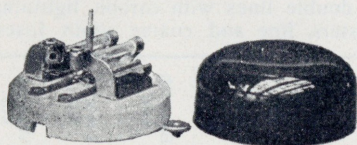
No. 453.

No. 453. Same with carbon lightning arrester and coarse grain fuses for double line.

Weight: 0,428 kos.

No. 455. Same with carbon lightning arrester, fine and coarse grain fuses for double line.

Weight: 0,428 kos.



No. 454—455.

## XXV. Cable terminal boxes.

For double lines with carbon lightning arresters and fine grain fuses.  
(Heating coils.)

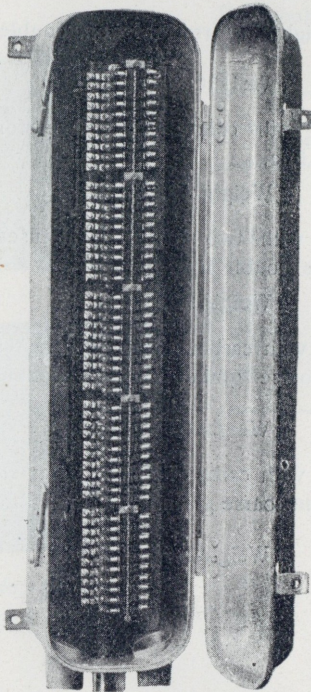
Nos	Number of lines	Height mm.	Breadth mm.	Length mm.	Weight kos.
434	20	225	250	481	15,0
435	25	225	250	554	17,8
436	30	225	250	628	20,0
437	40	225	250	775	25,0
438	50	225	250	922	29,0

For double lines with carbon lightning arresters and coarse grain fuses.  
(Bose tubes.)

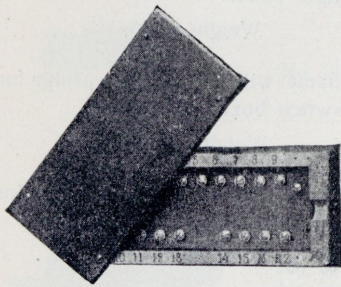
Nos	Number of lines	Height mm.	Breadth mm.	Length mm.	Weight kos.
440	20	225	250	481	15,0
441	25	225	250	554	17,8
442	30	225	250	628	20,0
443	40	225	250	775	25,0
444	50	225	250	775	29,0

For double lines with carbon lightning arresters, fine and coarse grain fuses.

Nos	Number of lines	Height mm.	Breadth mm.	Length mm.	Weight kos.
446	20	225	250	481	16,0
447	25	225	250	554	18,8
448	30	225	250	628	21,5
449	40	225	250	775	26,5
450	50	225	250	922	31,5



No. 434—450.



No. 458—469.

## XXVI. Cable distributing boxes.

No. 458.	For	5	single	lines
" 459.	"	10	"	"
" 460.	"	15	"	"
" 461.	"	20	"	"
" 462.	"	25	"	"
" 463.	"	30	"	"
" 464.	"	5	double	"
" 465.	"	10	"	"
" 466.	"	15	"	"
" 467.	"	20	"	"
" 468.	"	25	"	"
" 469.	"	30	"	"

Notice: Other executions on request.

## XXVII. Telephone appliances and accessories for telephone exchanges.

### Call- and listening keys.



No. 391—392.



No. 545.



No. 393.



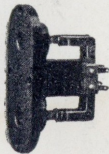
No. 546.



No. 407.



No. 547.



No. 563.



No. 563-a.

No. 391. Combined call- and listening key with 22 contact springs for multiple boxes.

Weight: 0,15 kos.

No. 392. Same with 14 contact springs for switch boxes „Standard“.

Weight: 0,13 kos.

No. 545. Same with 12 contact springs for central battery switch boxes.

Weight: 0,13 kos.

No. 393. Call-back key.

Weight: 0,05 kos.

No. 546. Switch key.

Weight: 0,05 kos.

No. 407. Listening plug-in with three metal fingers.

Weight: 0,05 kos.

No. 547. Same with two fingers.

Weight: 0,05 kos.

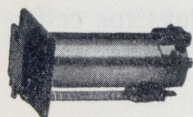
No. 563. Twin plug-in.

Weight: 0,23 kos.

No. 563-a. Plug with four contacts for plug-in No. 563.

Weight: 0,1 kos.

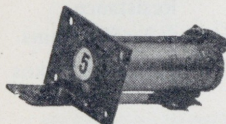
## Call- and stop drops.



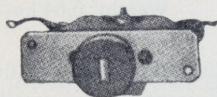
No. 394.



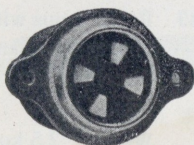
No. 395.



No. 396—396.



No. 399.



No. 399-a.

No. 394 Line drop with iron jacket for long distance switch. Resistance 500 ohms.  
Weight: 0,24 kos.

No. 395. Line drop without iron jacket for switch boxes. Resistance 150 ohms.  
Weight: 0,1 kos.

No. 396. Stop drop with iron jacket for switch boxes. Resistance 1000 ohms.  
Weight: 0,18 kos.

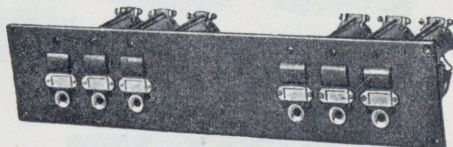
No. 397. Stop drop with iron jacket for long distance switches. Resistance 1500 ohms.  
Weight: 0,24 kos.

No. 398. Combined mechanically returnable ball signal. Resistance 500 ohms.  
Weight: 0,37 kos.

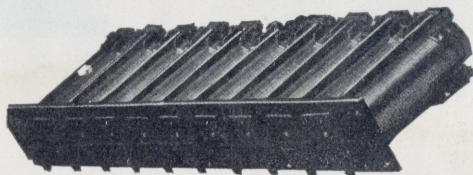
No. 399. } Blanker.  
No. 399-a) Weight: 0,33 kos.

No. 400. Combination board with listening plug-ins and mechanically returnable ball signals for main switch boxes.

No. 400-a. Strip with line drops for commutators.  
Weight: 1,6 kos.

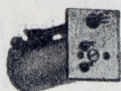


No. 400.



No. 400-a.

## Relays for central batteries.



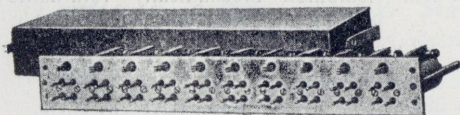
No. 401.

- No. 401. Call-up relays with iron jacket, direct current resistance 1000 ohms.  
Weight: 0,2 kos.



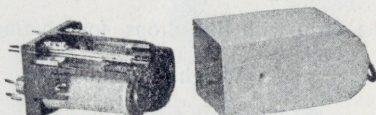
No. 402.

- No. 402. Call-up and stop signal relays with two windings.  
Resistance  $2 \times 500$  ohms.  
Weight: 0,22 kos.



No. 403.

- No. 548. Stop signal relays, direct current resistance 200 ohms.  
Weight: 0,64 kos.



No. 548.

- No. 403. Relay strips with 10, call-up and stop signal relays.  
Weight: 2 kos.



- No. 549. Relay strips with ten call-up and disconnecting relays.  
Weight: 2,5 kos.



No. 549.



No. 404.



No. 405.



No. 550.



No. 551.



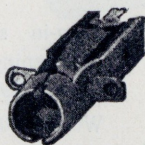
No. 552.



No. 553.

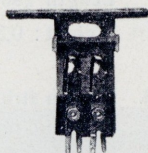
## Plug-in strips.

- No. 404. Plug-in strip with 10 listening plug-ins.  
Length 290 m/m.  
Weight: 0,3 kos.
- No. 405. Lamp strip with 10 lamp sockets.  
Length 290 m/m.  
Weight: 0,38 kos.
- No. 550. Plug-in strip with 10 listening plug-ins.  
Length 200 m/m.  
Weight: 0,23 kos.
- No. 551. Lamp strip with 10 lamp sockets.  
Length 200 m/m.  
Weight: 0,28 kos.
- No. 552. Plug-in strip with 20 multiple plug-ins.  
Length 200 m/m.  
Weight: 0,28 kos.
- No. 553. Plug-in strip with 20 multiple plug-ins.  
Length 290 m/m.  
Weight: 0,54 kos.



*No. 406.*

No. 406. Single lamp sockets.  
Weight : 0,06 kos.



*No. 554.*

No. 554. Double lamp sockets.  
Weight : 0,08 kos.



*No. 511.*

No. 509. Signal lamps.

No. 510. Lamp cap with opal lens.



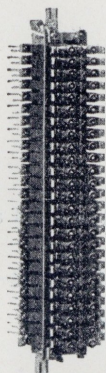
*No. 509.*

No. 511. Same with metal ring.



*No. 510.*

No. 555. Same with protecting hood.



No. 556.

## Distributing strips and safety devices for main and intermediate distributors.

No. 556. Safety device with carbon lightning arrester with self-fusing heating coils for 25 double lines.

Weight: 3,85 kos.



No. 557.

No. 557. Distributing strips with  $2 \times 20$  soldering taps. Length 180 m/m.

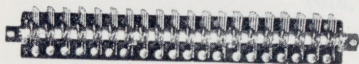
Weight: 0,17 kos.



No. 558.

No. 558. Same with  $4 \times 20$  soldering taps. Length 180 m/m.

Weight: 0,22 kos.



No. 559.

No. 559. Same with  $4 \times 20$  soldering taps. Length 300 m/m.

Weight: 0,31 kos.



No. 408.

No. 408. Distributing strips with try-out plug-ins for 10 double lines.

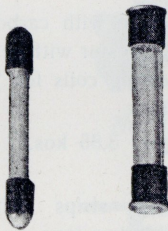
Weight: 0,25 kos.



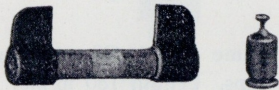
No. 560.

No. 560. Try-out plug with four contacts.

Weight: 0,05 kos.



No. 480.      No. 481.



No. 482.      No. 483.



No. 516.

No. 480. "Bose" tubes 0,3 amp.

No. 561. Same 1 amp.

No. 562. Same 2 amp.

No. 481. Same 3 amp.

No. 482. Same with knife contact 3 amp.

No. 483. Heating coil 0,25 amp.

No. 564. Flat carbon for lightning arrester.

No. 516. Carbon with groove.

No. 565. Mica partition for carbons.



### Plugs.

No. 409. Plug for single line. Diameter 6,45 m/m.  
Weight: 0,03 kos.

No. 409—412.

No. 410. Same diameter 5,45 m/m.  
Weight: 0,03 kos.



No. 411. Double plug for spiral cord, diameter  
5,45 m/m.  
Weight: 0,03 kos.

No. 412. Same for strand cord, diameter 5,45 m/m.  
Weight: 0,03 kos.

No. 542.

No. 542. Same with protective steel spiral for strand  
cord, diameter 5,45 m/m.  
Weight: 0,04 kds.



No. 413. Triple plug for strand cord. Diameter  
5,45 m/m.  
Weight: 0,03 kos.

No. 413.



*No. 414.*

No. 414. Cord weight.  
Weight: 0,3 kos.



*No. 543.*

No. 543. Cord weight with double disc.  
Weight: 1,1 kos.



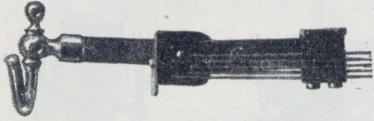
*No. 544.*

No. 544. Cord pulley.  
Weight: 0,09 kos.

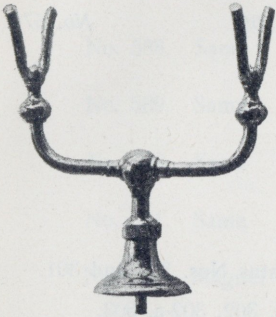
## XXVIII. Fittings and accessories for telephone apparatus.



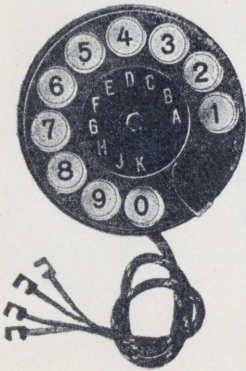
No. 484.



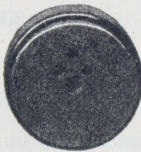
No. 485.



No. 569.



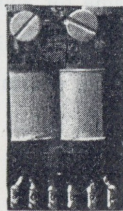
No. 486.



No. 497.



No. 571.



No. 508.

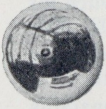


No. 507.

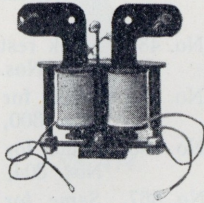
### Switches.

- No. 484. Hook rest switch for app. Nos. 302, 303.
- No. 485. Same for apparatus Nos. 300, 301.
- No. 566. Same for apparatus Nos. 304, 308.
- No. 567. Same for apparatus No. 329.
- No. 568. Fork rest switch for apparatus Nos. 302-a, 305, 306, 307, 309.
- No. 569. Same for apparatus Nos. 305-a, 306-a, 307-a.
- No. 570. Same for apparatus No. 327.
- No. 571. Plug with three contacts.
- No. 497. Plug-in base with three contacts.
- No. 486. Numbered disc selector for automatic app.
- No. 507. Buzzer signal interruptor.
- No. 508. Polarized buzzer.

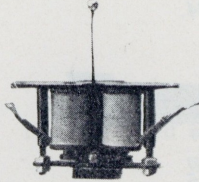
## Bell accessories.



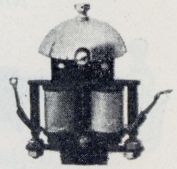
No. 503.



No. 504.



No. 505.



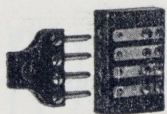
No. 579.

- No. 503. Bell scale 70 m/m.  
 No. 572. Same 63 m/m.  
 No. 573. Same 53 m/m.  
 No. 504. Bell armature for apparatus Nos. 300 and 301.  
 No. 505. Same for apparatus Nos. 302, 302-a, 303.  
 No. 574. Same for app. Nos. 304, 308.  
 No. 575. Same " " " 309.  
 No. 576. Same " " " 305, 306.  
 No. 577. Same " " " 306-a.  
 No. 578. Same " " " 305-a, 306-a, 307-a.  
 No. 579. Bell with one scale for apparatus No. 322.  
 No. 506. Same for apparatus Nos. 498, 499.  
 No. 580. Bell coil, resistance 1000 ohms.  
 No. 581. Same, resistance 500 ohms.  
 No. 582. Same, " 250 "  
 No. 583. Same, " 150 "

No. 584.	Keeper for bell armature	No. 504.
No. 585.	Same " " "	No. 505.
No. 586.	Same " " "	No. 574.
No. 587.	Same " " "	No. 575.
No. 588.	Same " " "	No. 577.
No. 589.	Same " " "	No. 578.
No. 590.	Same " " "	No. 579.
No. 591.	Same " " "	No. 506.
No. 592.	Magnet " " "	No. 504.
No. 593.	Same " " "	No. 505.
No. 594.	Same " " "	No. 578.
No. 595.	Same " " "	No. 506.
No. 596.	Same " " "	No. 579.

## Accessories for inductors.

- No. 597. Left side plate for inductors Nos. 361, 362, 363.
- No. 598. Right side plate for inductors Nos. 361, 362, 363.
- No. 599. Same for inductor No. 365.
- No. 600. Left side plate for inductor No. 365.
- No. 691. Driving cogwheel for inductors Nos. 361, 362, 363.
- No. 602. Same for inductor No. 365.
- No. 603. Cogwheel for inductors Nos. 361, 362, 363.
- No. 604. Same for inductor No. 365.
- No. 605. Armature for inductor No. 361.
- No. 606. Same " " No. 362, 363.
- No. 607. Same " " No. 365.
- No. 608. Axle " " No. 361.
- No. 609. Same " " No. 362, 363.
- No. 610. Same " " No. 365.
- No. 611. Magnet " " No. 361, 362.
- No. 612. Same " " No. 363, 365.
- No. 613. Outer contact spring for inductors.
- No. 614. Inner contact spring for inductors.
- No. 615. Crank for wall apparatus.
- No. 616. Same " table apparatus.
- No. 617. Same " portable apparatus.
- No. 618. Same " table apparatus type „Reichspost“.



No. 471. No. 473.

## Accessories for microtelephones.

No. 471. Plug with four contacts.

No. 472. Same „ five „

No. 473. Plug-in with four contacts.

No. 474. Same „ five „

No. 475. Ebonite shells for phones.

No. 476. Same with metal ring for adjustable phones.

No. 477. Same with metal ring for portable apparatus.

No. 619. Telephone membrane, diameter 52,5 m/m.

No. 620. Same, diameter 55,5 m/m.

No. 478. Hygienic metal speaking funnel.

No. 479. Celluloid speaking funnel with metal base.

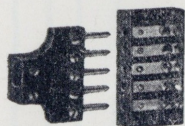
No. 621. Carbon membrane, diam. 48 m/m.

No. 622. Same „ „ 50,5 „

No. 623. Same „ „ 52 „

No. 624. Same „ „ 53 „

No. 625. Same „ „ 55 „



No. 472. No. 474.



No. 475. No. 476.



No. 477. No. 478.



No. 479.



No. 621-625.

## Accessories for microtelephones.



No. 626.



No. 627.

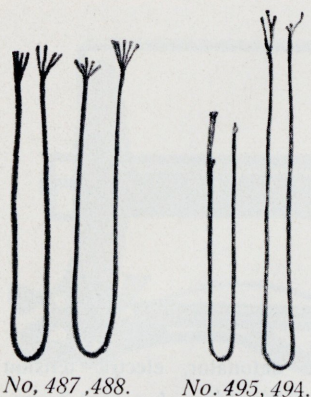


No. 628.



No. 642—646.

- No. 626. Carbon bearing for microphone pellets.
- No. 627. Same for carbon powder.
- No. 628. Same " " "
- No. 629. Felt ring for carbon bearing.
- No. 630. Ebonite ring for microphone shell.
- No. 631. Flat ring for microphone cover.
- No. 632. Horse shoe shaped fibre plate with contact springs.
- No. 633. Telephone coils without iron core.
- No. 634. Same with iron core and magnets.
- No. 635. Telephone horse shoe magnet.
- No. 636. Ebonite handle for microtelephone.
- No. 637. Same with metal tubes.
- No. 638. Same with metal tubes and battery contact.
- No. 642. Carbon pellets, diameter 0,5 m/m.
- No. 643. Same " " 1,0 "
- No. 644. Same " " 1,5 "
- No. 645. Carbon powder for local battery shells.
- No. 646. Same for central battery microphone shells.



No. 487, 488.

No. 495, 494.



No. 649.



No. 650.



No. 647.



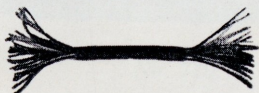
No. 651.



No. 653.



No. 658.



No. 659, 660.

## XXIX. Cords.

### Commutator cords.

- No. 491. Commutator strand wire cord, two cores, length 1 m.  
 No. 492. Same, length 1,5 m.  
 No. 493. Same, " 2,5 m.  
 No. 494. Same, 3 cores, length 2,5 m.  
 No. 640. Same, 3 " " 1,5 m.  
 No. 525. Commutator spiral cord, 2 cores, length 1,5 m.

### Telephone cords.

- No. 495. Two core cord for supplement telephone.  
 No. 496. Four core cord for telephone apparatus.  
 No. 641. Five core cord for telephone apparatus.

### Microtelephone cords.

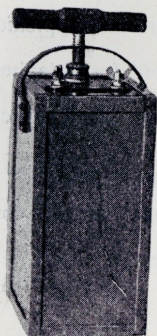
- No. 487. Microtelephone four core cord, round.  
 No. 488. Same, five cores, round.  
 No. 521. Same, " " braided.  
 No. 522. Same, four " "

### Base cords.

- No. 489. Base five core cord, round.  
 No. 490. Same six " " "  
 No. 520. Same seven core cord, round.  
 No. 523. Same twelve " " "  
 No. 519. Same twenty seven core cord, rd.

### Cords, to be delivered by the meter.

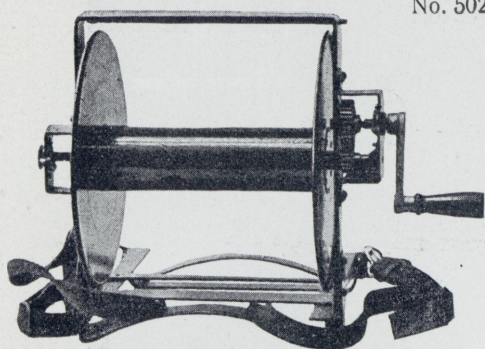
- No. 647. Commutator two core cord.  
 No. 648. Same three core cord.  
 No. 649. Same two " spiral cord.  
 No. 650. Telephone two core cord.  
 No. 651. Microtel. four core cord, round.  
 No. 652. " five " " "  
 No. 653. " four " " braided.  
 No. 654. " five " " "  
 No. 655. Base three core cord, round.  
 No. 656. " five " " "  
 No. 657. " six " " "  
 No. 658. " seven " " "  
 No. 659. " twelve " " "  
 No. 660. " twenty seven core cord, rd.



No. 512

No. 512. Electric detonator, electric tension  
120 volt, intensity of current 3 amp.

Weight: 10 kos.

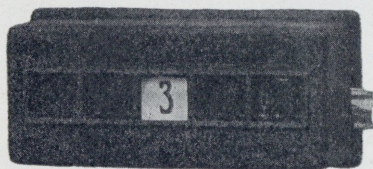


No. 502.

No. 502. Portable cable drum for winding field cable, very strongly built. Spools easily exchangeable, capacity up to 1000 meters of cable. Utmost speedy winding up by means of a combined cogwheel transmission gear, which may be released by a special lever, when winding off, giving free run to the spool.

Weight of the apparatus : 7,4 kos.

Weight of the spool : 2,2 kos.



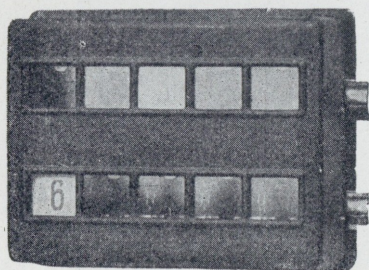
No. 709.

No. 709. Tableau with five numbers in metal casing.

Weight : 0,538 kos.

No. 710. Same with ten numbers.

Weight : 0,978 kos.



No. 710.

Notice: These tableaus excel through a pleasant exterior and solid construction, having furthermore the advantage of allowing extension by adding more tableaus.

