

AUG. VELLOMÄE-SPIRKE

---

# ESIMESI SAMMIE LAULMISÕPIETUSIES

IV. KL. ÕPILASE

---

TÕÕVIHK

K. K. Ü. „TÕÕKOOL“, TALLINN, 1935



A-9384 II



Autori õigused seadusega kaitstud.

Kordan: 2-65784

— veerand- ehk ..... löögiline noot.  
 — ..... ehk ..... " "

; ; ;

Kordan laulu „Eesti lipp“ (E. Võrk) Leelo III, ehk Algekooli lauluv. lhk. 35. Laulmise järele märgin rütmi ühele joonele ja panen taktikriipsud, löön takti ja „tammitan“.

nii

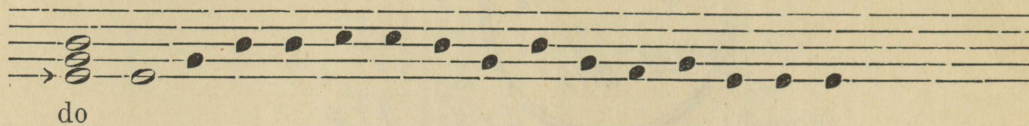
4

Kau-nis-ta-gem Ees-ti ko-jad

21784

Lõpumärk ||

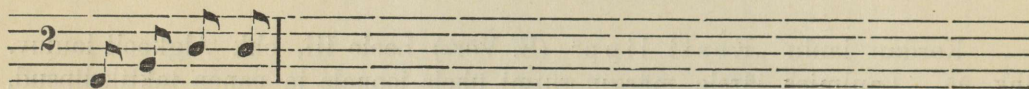
a) Laulan (taban) kolmkõla ja järgnevaid helisid.



A musical staff with a treble clef. The notes are: do (middle C), re (D4), mi (E4), fa (F4), sool (G4), la (A4), si (B4), do (C5), re (D5), mi (E5), fa (F5), sool (G5), la (A5), si (B5), do (C6). The word "do" is written below the first note.

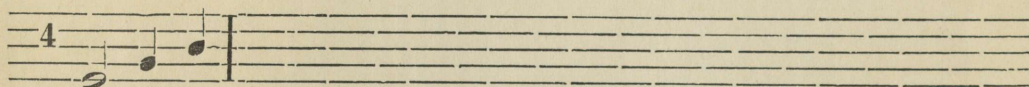
b) Kirjutan viisi 2-löögilises ja 4-l. taktimõõdus.

nii

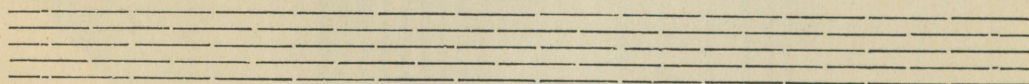


A musical staff with a 2/4 time signature. The notes are: do (middle C), re (D4), mi (E4), fa (F4), sool (G4). A bar line follows the fifth note.

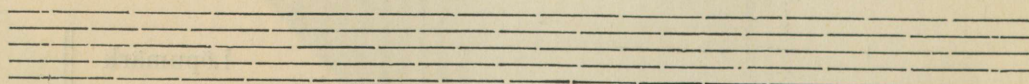
nii



A musical staff with a 4/4 time signature. The notes are: do (middle C), re (D4), mi (E4), fa (F4), sool (G4). A bar line follows the fifth note.



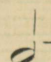

An empty musical staff with five lines.


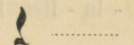


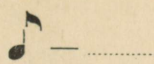
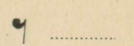
An empty musical staff with five lines.



Laul „Kus Põhjalahe kohiseb“ (rütm).

Kordan :


 2-löög. noodile vastab  ..... löög. pause.


 " "  " "


 " "  " "

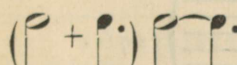
 ehk  ..... löök.

tai-a tai-a

4   
tam taam-ra ta-ra ta-ra taa

Küsin õpetajalt, mida tähendab märk  .....

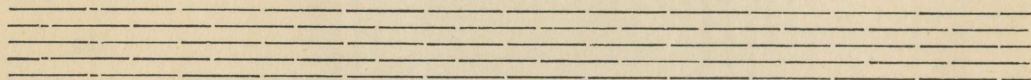
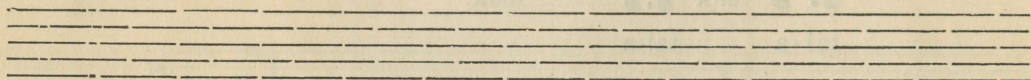
 — pean kinni ..... lööki

 — " " .....

Kirjutan laulu „Kus Põhjalahe kohiseb“.



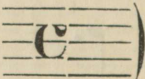
Kus Põh-ja - la - he ko - hi - seb,



Löön takti ja laulan.

Kordan :

Löön takti (ühe käega) — põrand (I löök), aken (II l.), sein (III l.), lagi (IV l.),  
(kahe „ ) — alla (I löök), risti (II l.), laiali (III l.) üles (IV l.).

See neljalöögiline takt märgitakse 4,  $\frac{4}{4}$  (ehk )

Noodi nimed\*).

do (re) mi (fa) so(l) (la) (si) do (ülem.)

Kus asuvad teised noodid?

Kirjutan nootidele nimed juurde.

do do

Panen taktikriipsud, „tammitan“ ja lõõn takti.

2löögiline ( $\frac{2}{4}$ ) takti lüüakse — põrand (I l.), lagi (II l.).

nii

ta - ra tai-a ta-ra-tam

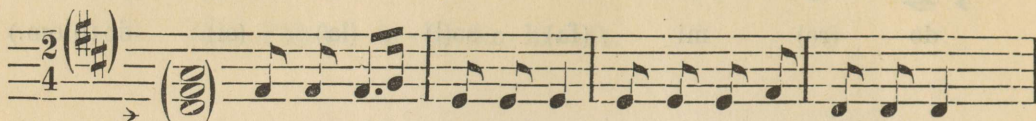
\*) Õpetajale. Kui õpilasile kolmkõla kergesti tajutav, tarvitada re ja fa, siis alles si ja la.

Laulan õpetaja kaasabil laulu

„Ah, ah, ai“,

(A. Vellomäe).

mille rütm on juba selge.



Ah, ah, ai, ah, ah, ai, kus see laps need su-kad sai,



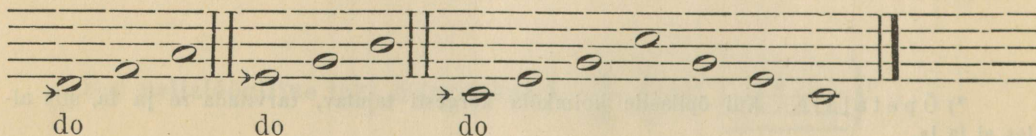
e - ma ku-dus päe-va kaks, sukk nii soe ja peh-me, paks, ah, ah, ai,



ah, ah, ai, kus see laps need su-kad sai.

Need laulud on kõik „rõõmsad“, nad on kirjutatud duuris.

Laulan duur-kolmkõlasid.



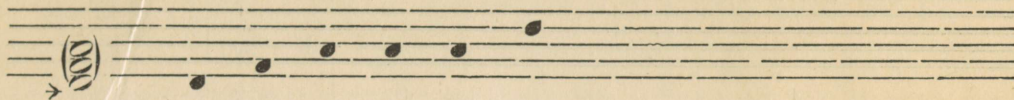
Laulan (taban helisid) õpetaja kaasabil raamatust laulu

**„Miks sa nutad lillekene“,**

mis on 3-osalises ( $\frac{3}{4}$ ) taktimõõdus kirjutatud. See laul kõlab kurvalt (mollis\*).

a) Taban õpetaja laulmise järele helid ja märgin need üles.

nii

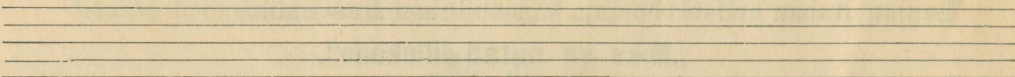


b) Määrän helide vältused, tõmban taktikriipsud ja kirjutan salmide sõnad.

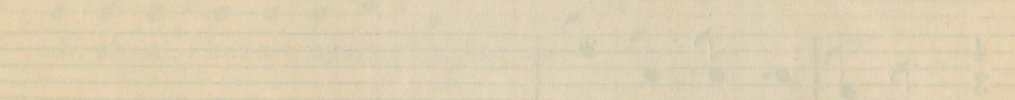
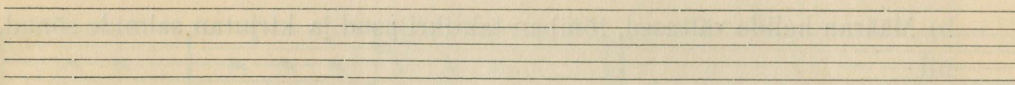
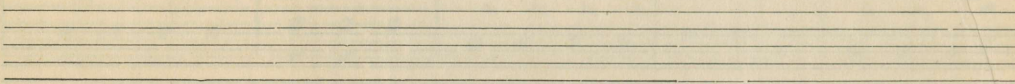
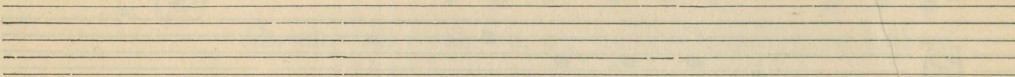
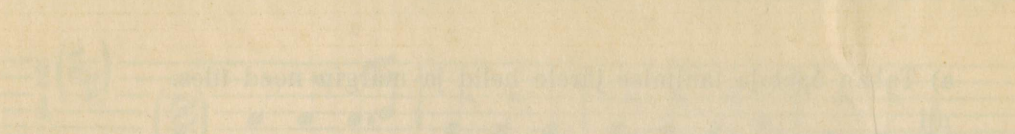
nii



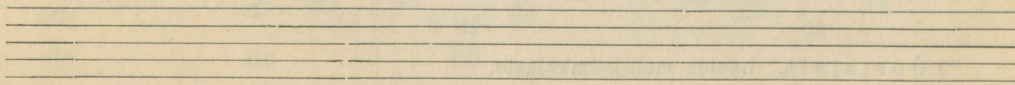
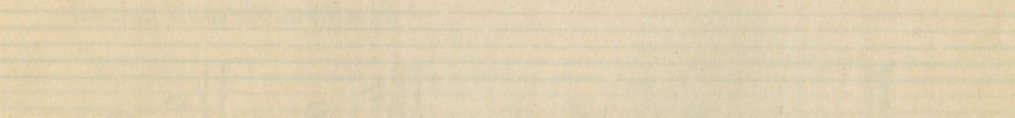
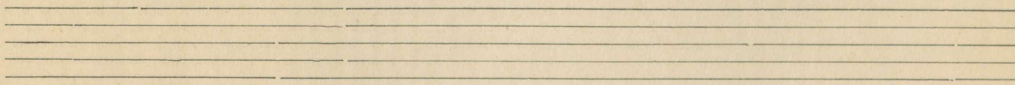
\*) Õpetajale. Laulda moll-kolmkõlasid.



Faint, illegible text or markings on the first staff.



Faint, illegible text or markings on the sixth staff.







Kirjutan (transponeerin) laulu

## „Laul langenud kangelastele“

(J. Aavik)

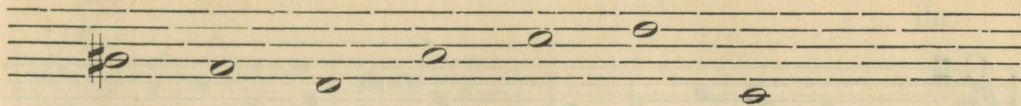
1 aste (koht) kõrgemale ehk 2 astet madalamale — õpetaja soovi kohaselt\*).

do Pu - ha - ke, pa - re - mad po - jad,

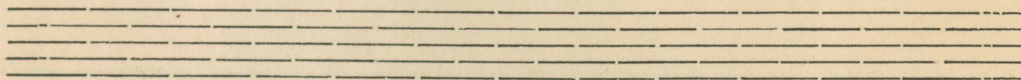
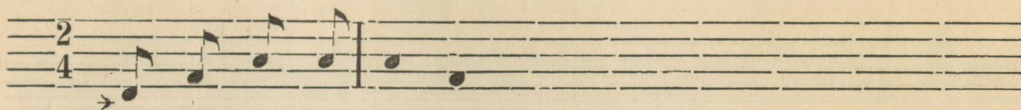
\*) Õpetajale: Soovitav ainult üleminehääli.




Kõrgendusmärk # (ehk diees) kõrgendab heli poole tooni võrra.  
Kõrgendan helisid.

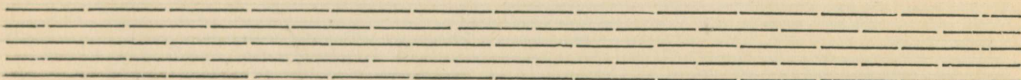
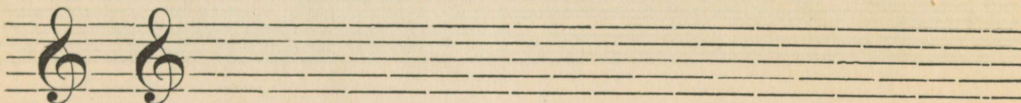


Märgin helid õpetaja laulmise järele (mollis).



Iga laulu ees on märk , mille nimi on noodivõti (sol- ehk viiulivõti).

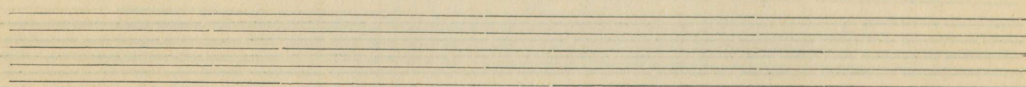
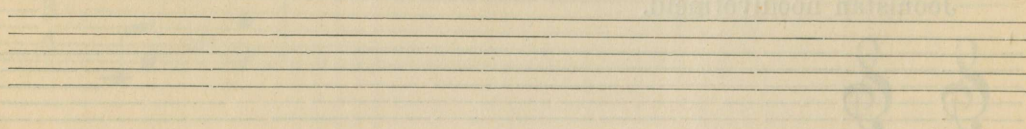
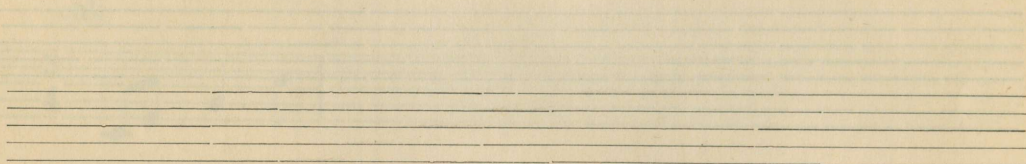
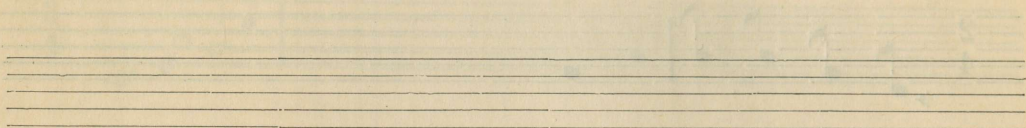
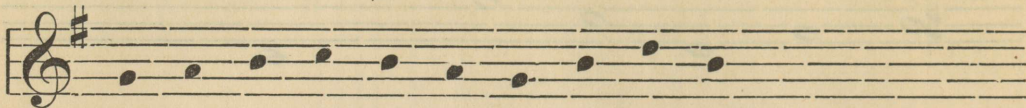
Joonistan noodivõtmeid.



# Üles, üles hellad vennad.

Märgin noodid punktikestega, kui õpetaja laulab.

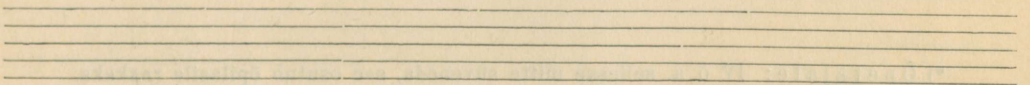
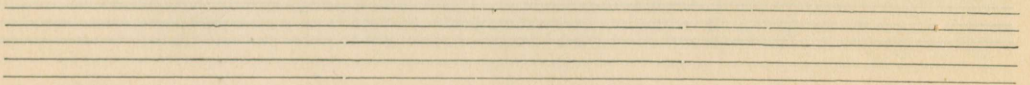
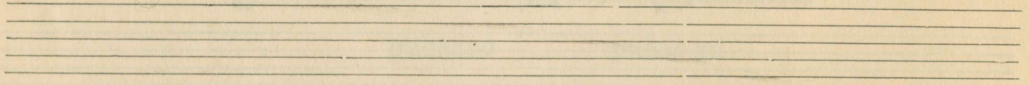
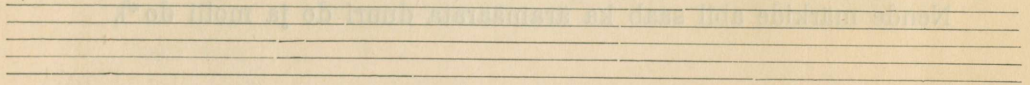
nii



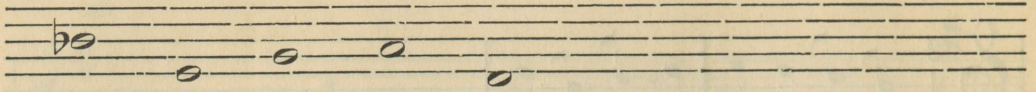
## Üles, üles hellad vennad.

Õpetaja takti(enda jala l.)löömise jäarele märgin helide vältuse (rütmi).  
nii

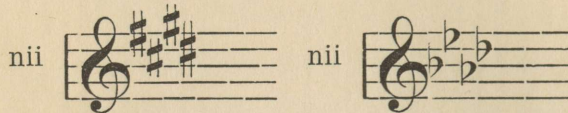
Ü - les, ü - les hel-lad vennad



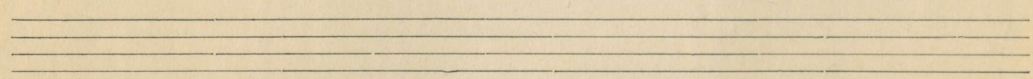
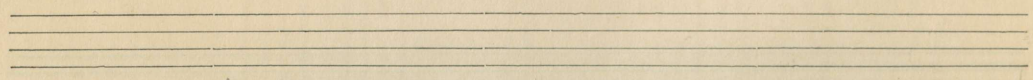
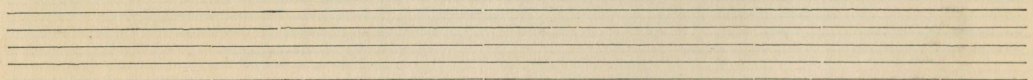
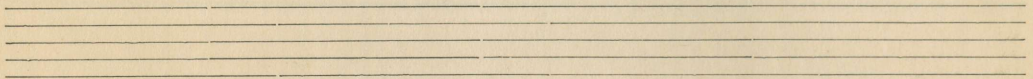
Madaldusmärk ♭ (bee, bemoll) madaldab heli poole tooni võrra.  
Madaldan helisid.



Kõrgendus- ja madaldusmärgid ♯, ♭ (ristid ja bee'd) kirjutatakse harilikult noodivõtme järele.




Nende märkide abil saab ka äramäärata duuri do ja molli do\*).

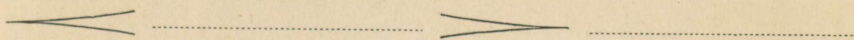


\*) Õpetajale: IV õ/a. sellesse mitte süveneda, see osutub õpilasile raskeks.

Laulan raamatust laulu „**Kas tunned maad**“ ja panen tähele noodimärke.


Küsin õpetajalt, mis tähendab märk  s. o. ....

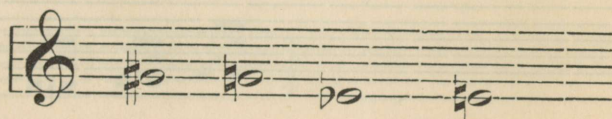
Kirjutan välja kõik märgid selles laulus, mida ma ei tunne.



*mf* —

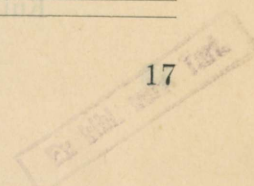
*f* —

Keelumärk  (bekarr) keelab kõrgenduse ehk madalduse ära.



puhas so

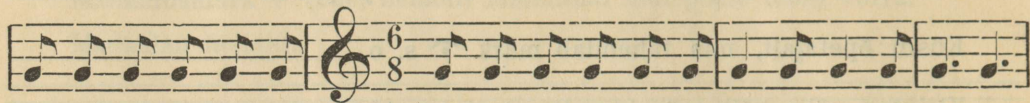
puhas mi



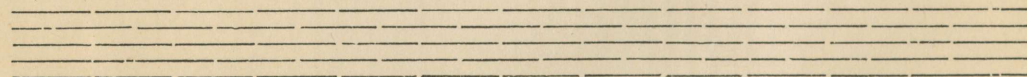
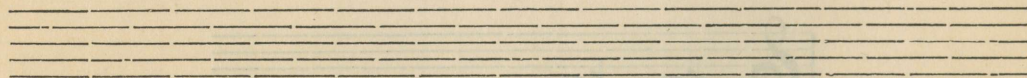
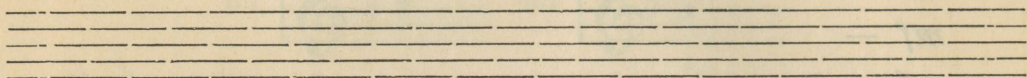
Kaheksandikud noodid

ehk

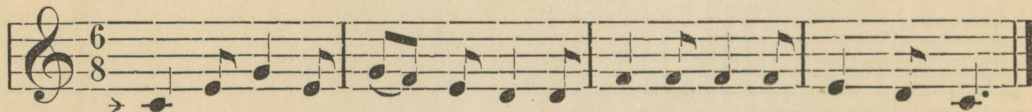
ehk



$\frac{6}{8}$  saame  $\frac{6}{8}$  takti (kuueosaline takt)



Laulan (taban) noodinimedega ja salmi sõnadega.



Vel - le - ke - ne tee mul' saa-ni, et võiks liu-gu las - ta ma,  
Kui saan suureks tä - nu tä-heks sõi-dan sind siis ruu - na - ga.



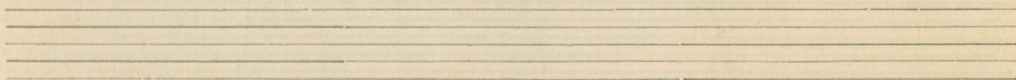
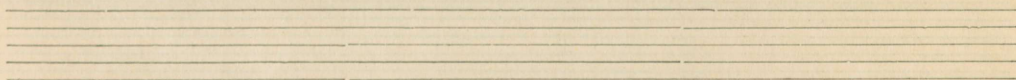
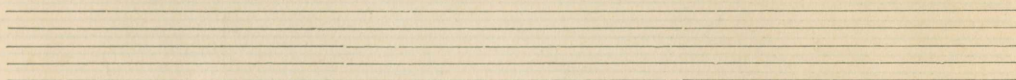
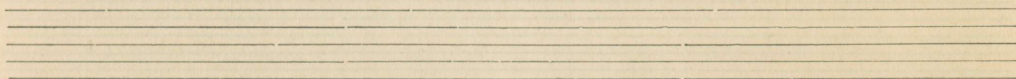
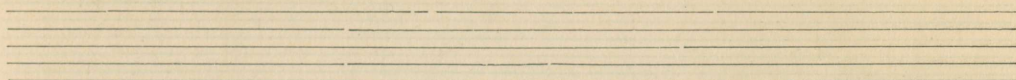
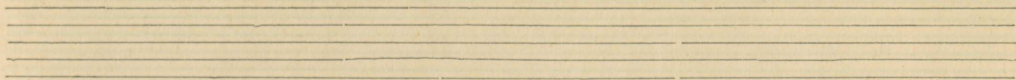
Handwritten musical notation on a five-line staff, including notes, rests, and a key signature symbol.

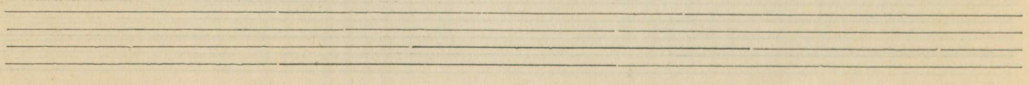
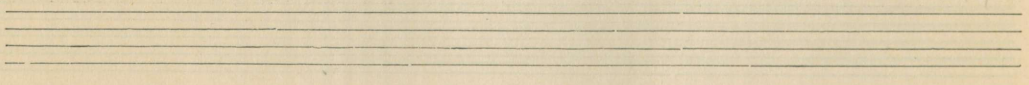
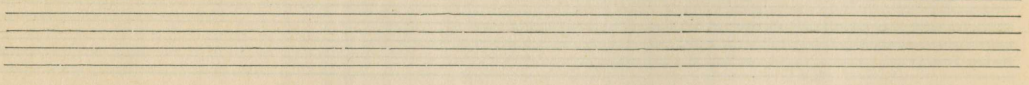
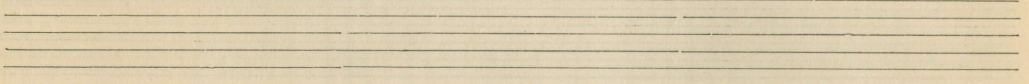
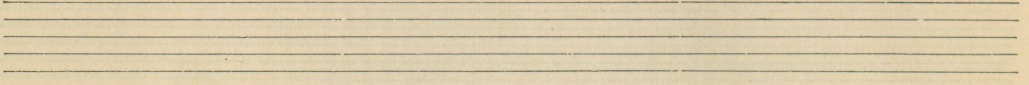
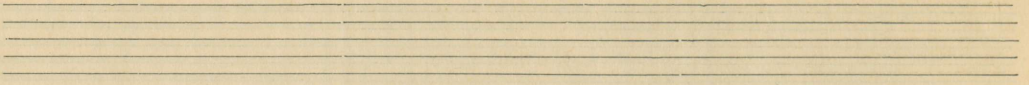
Handwritten musical notation on a five-line staff, including notes, rests, and a key signature symbol.

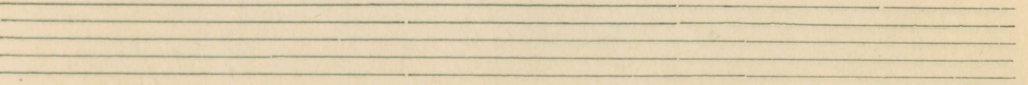
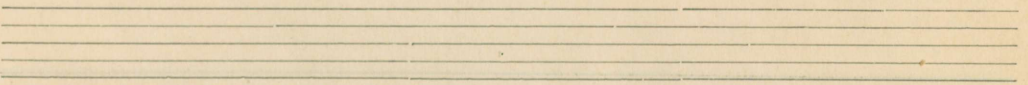
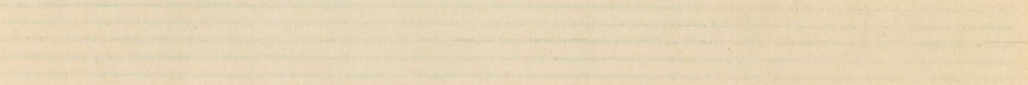
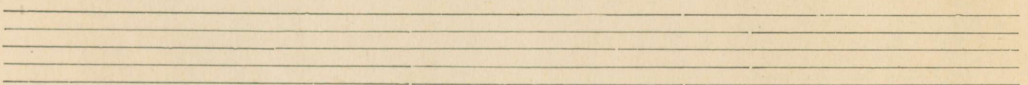
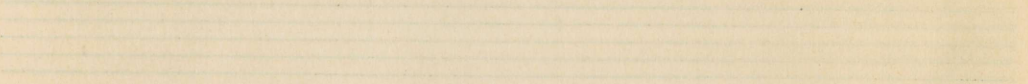
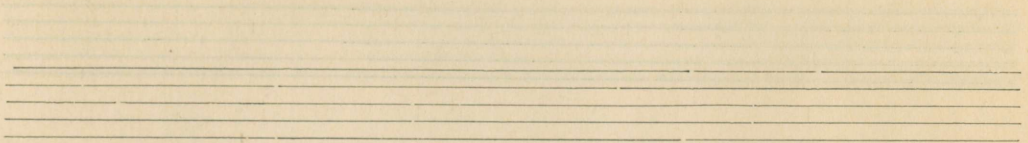
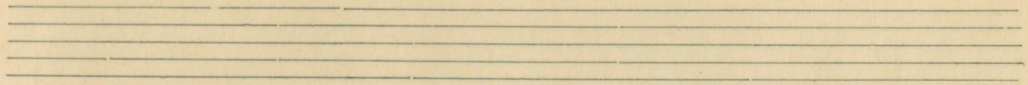
Handwritten musical notation on a five-line staff, including notes, rests, and a key signature symbol.

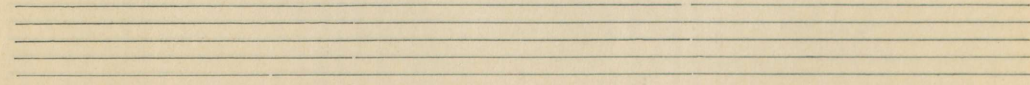
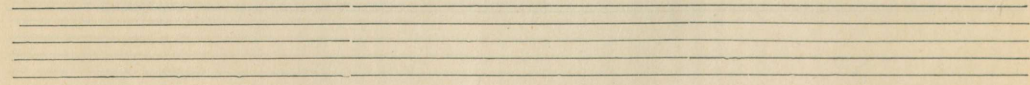
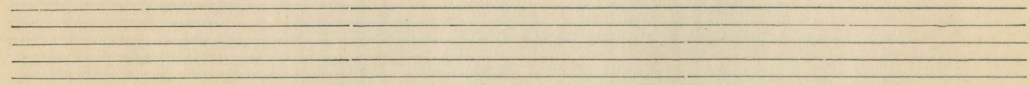
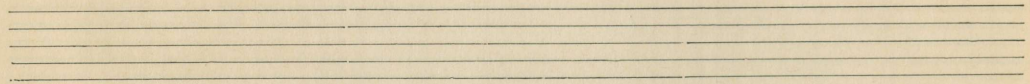
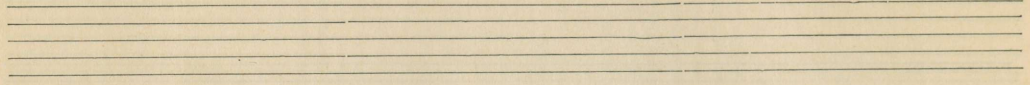
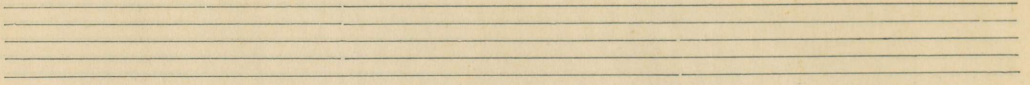
Handwritten musical notation on a five-line staff, including notes, rests, and a key signature symbol.

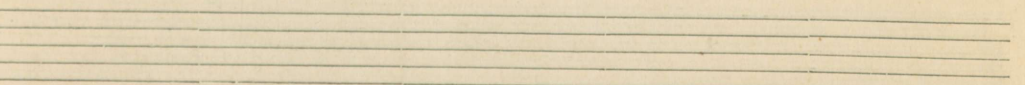
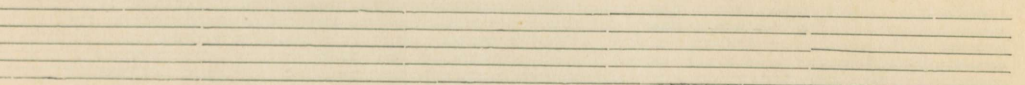
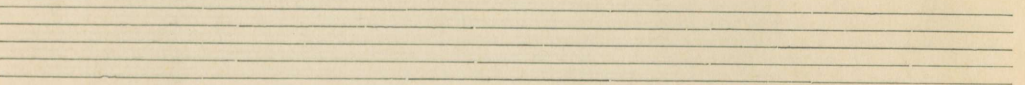
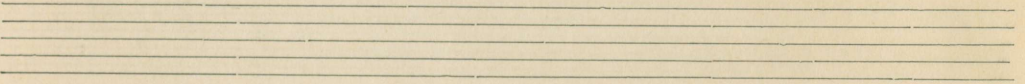
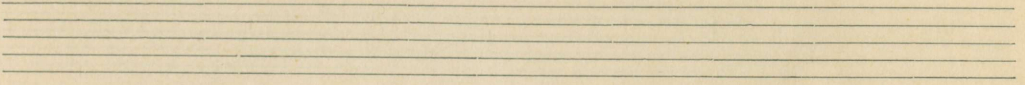
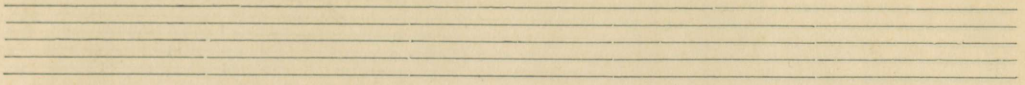
Handwritten musical notation on a five-line staff, including notes, rests, and a key signature symbol.

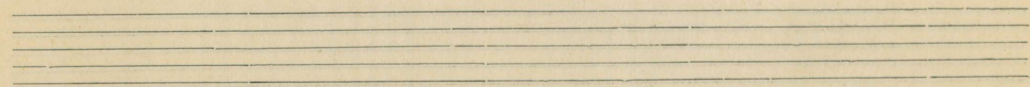
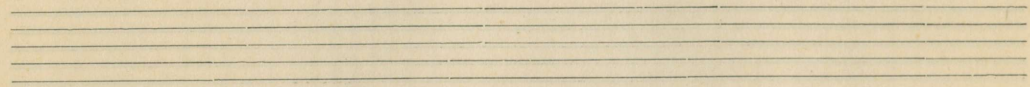
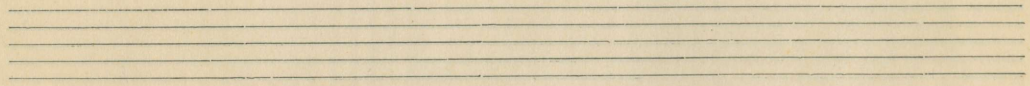
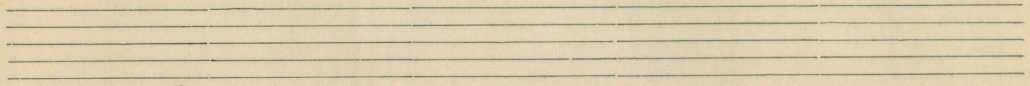
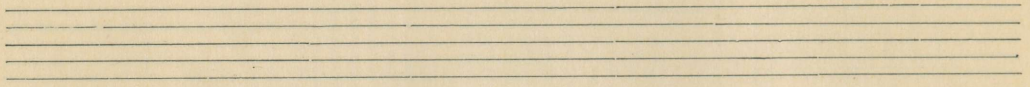
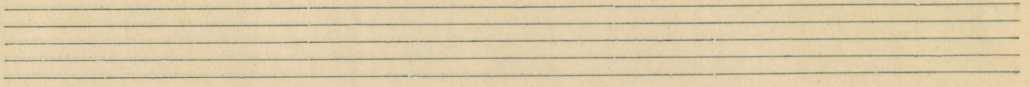


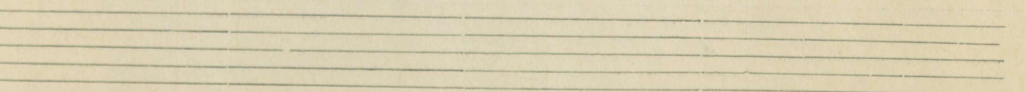
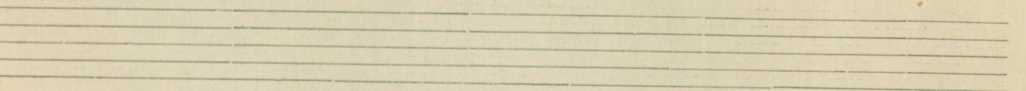
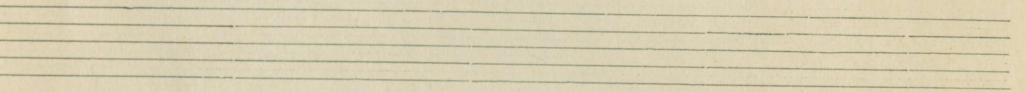
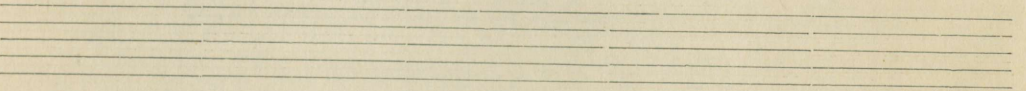
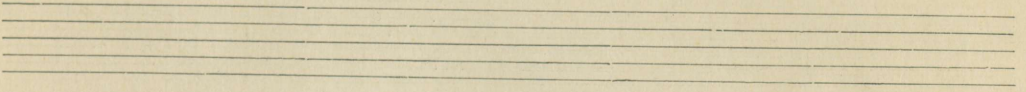
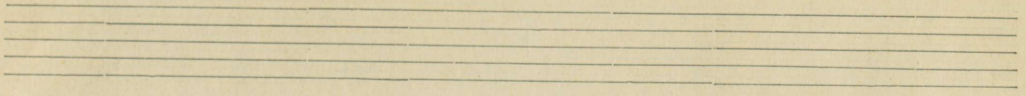


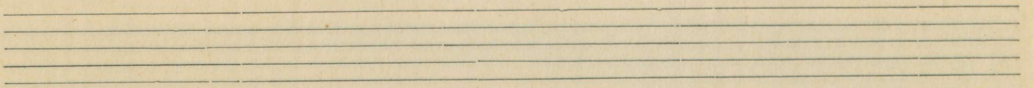
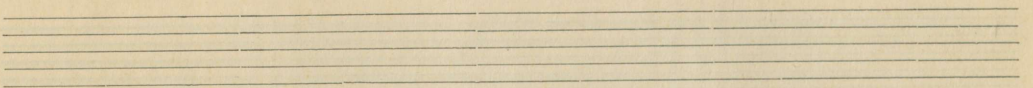
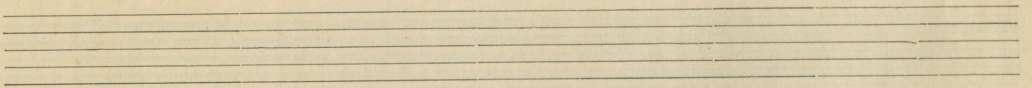
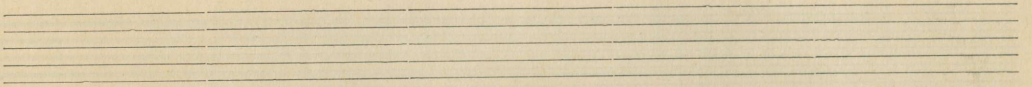
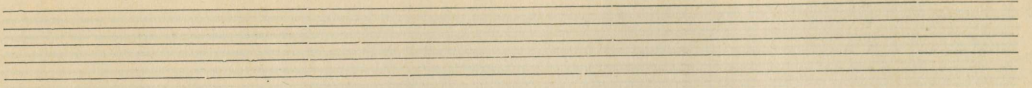
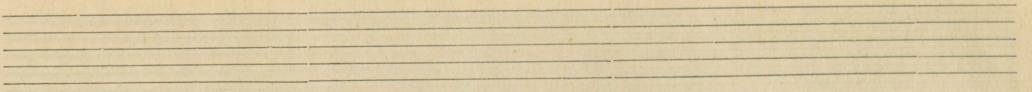














A-9384

0

