

4  
m se:

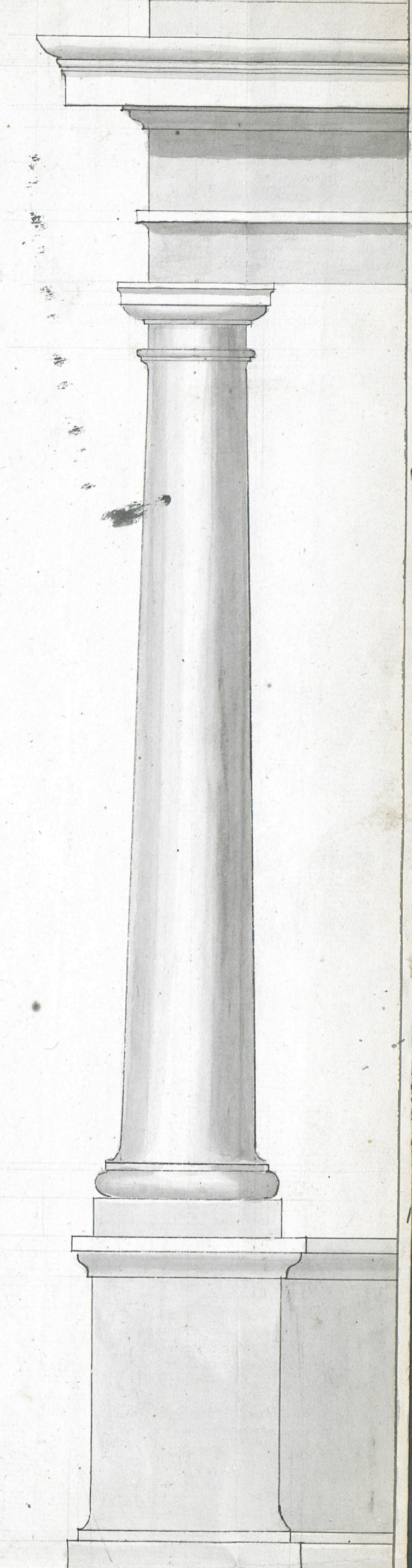
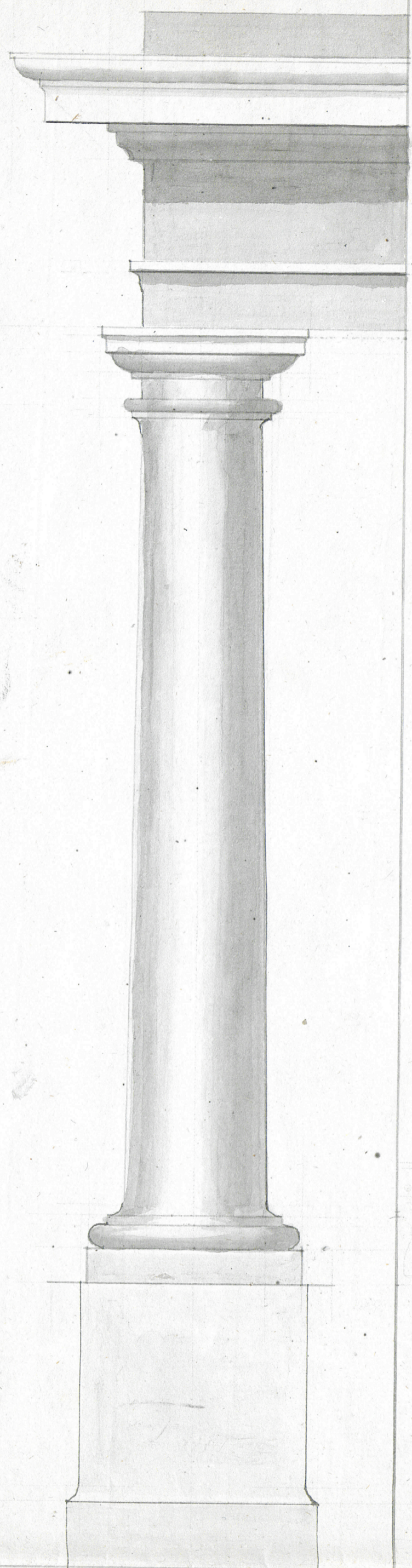
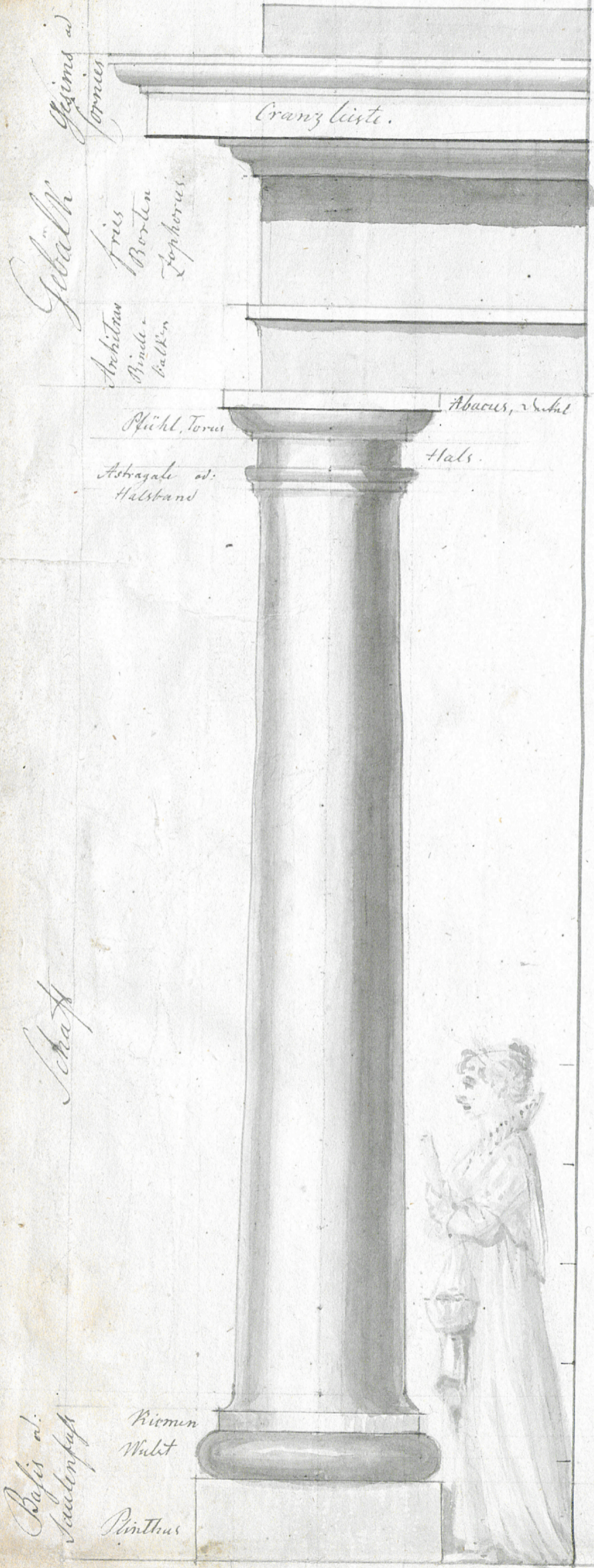
Hilfszeichnungen der Säulen-

Ordnungen.

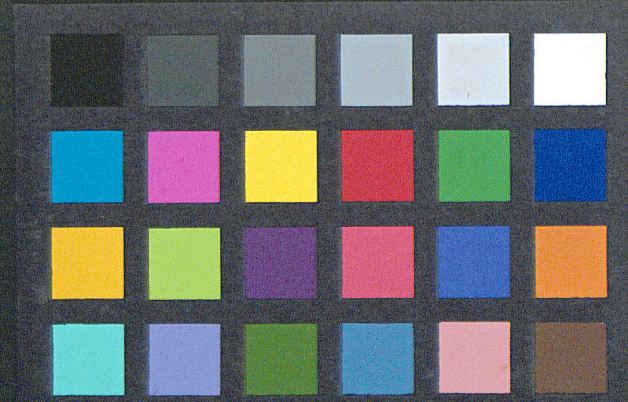
XI. 473<sup>d</sup>

Detailzeichnungen der Säulenordnungen  
zum Behuf der Zeichnenden u. Tuschenden,  
in Tusche Handzeichnung v. Professor  
Krause.

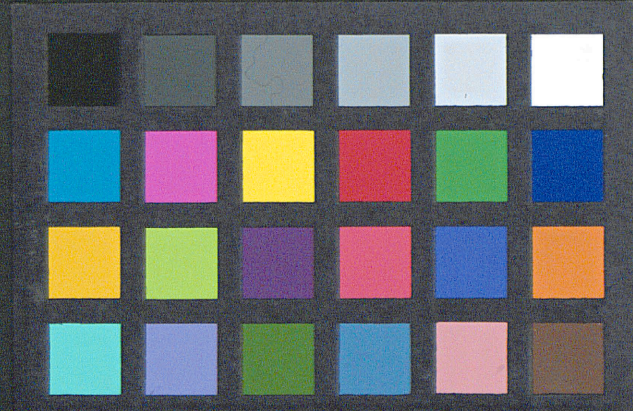
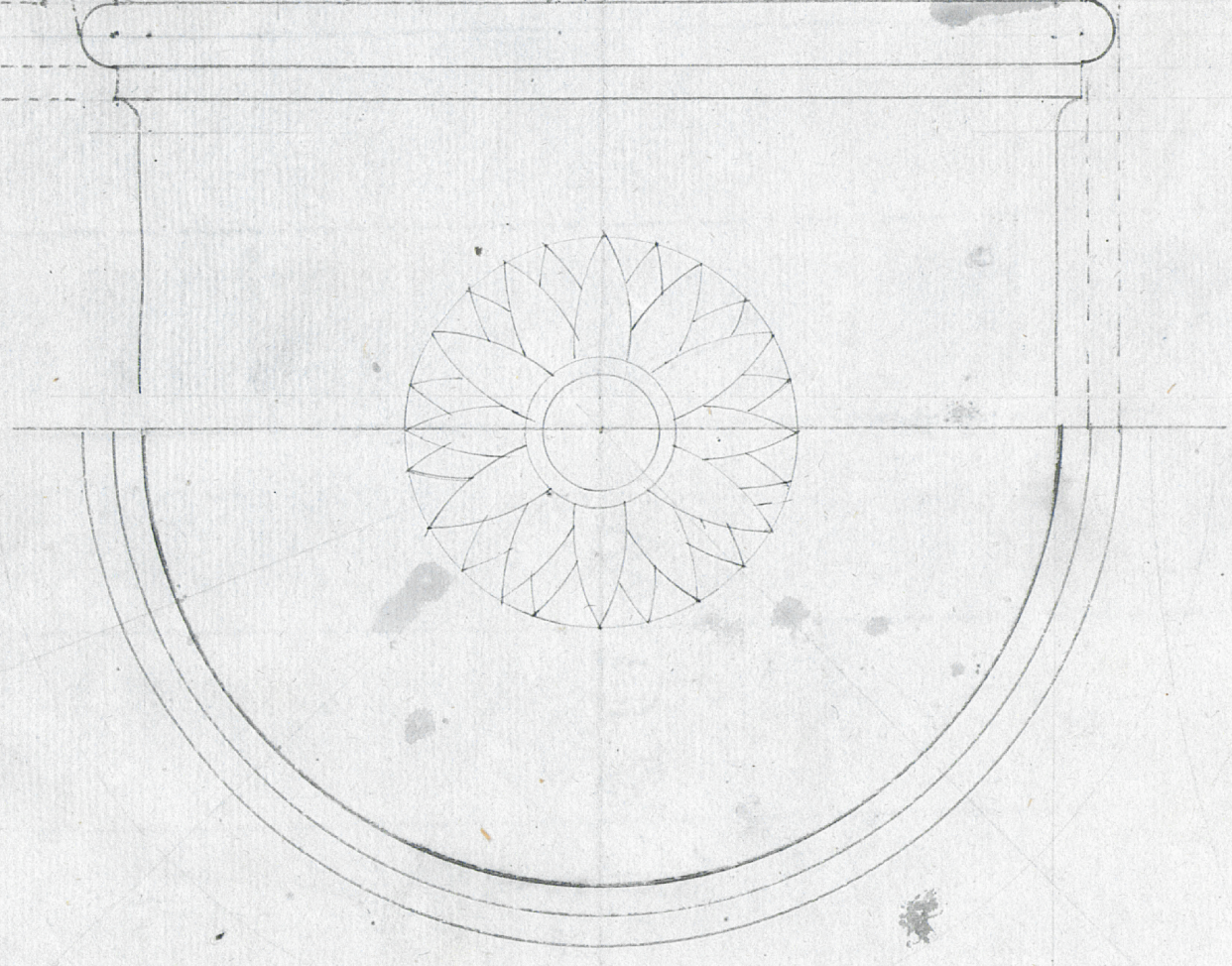
Acc. 15622.



BIBLIOTH.  
ACADEM.  
DORPAT.



9. 3. 9. 3. 4. 4. 6. 2. 3. 1. 2

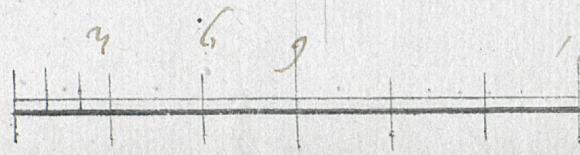
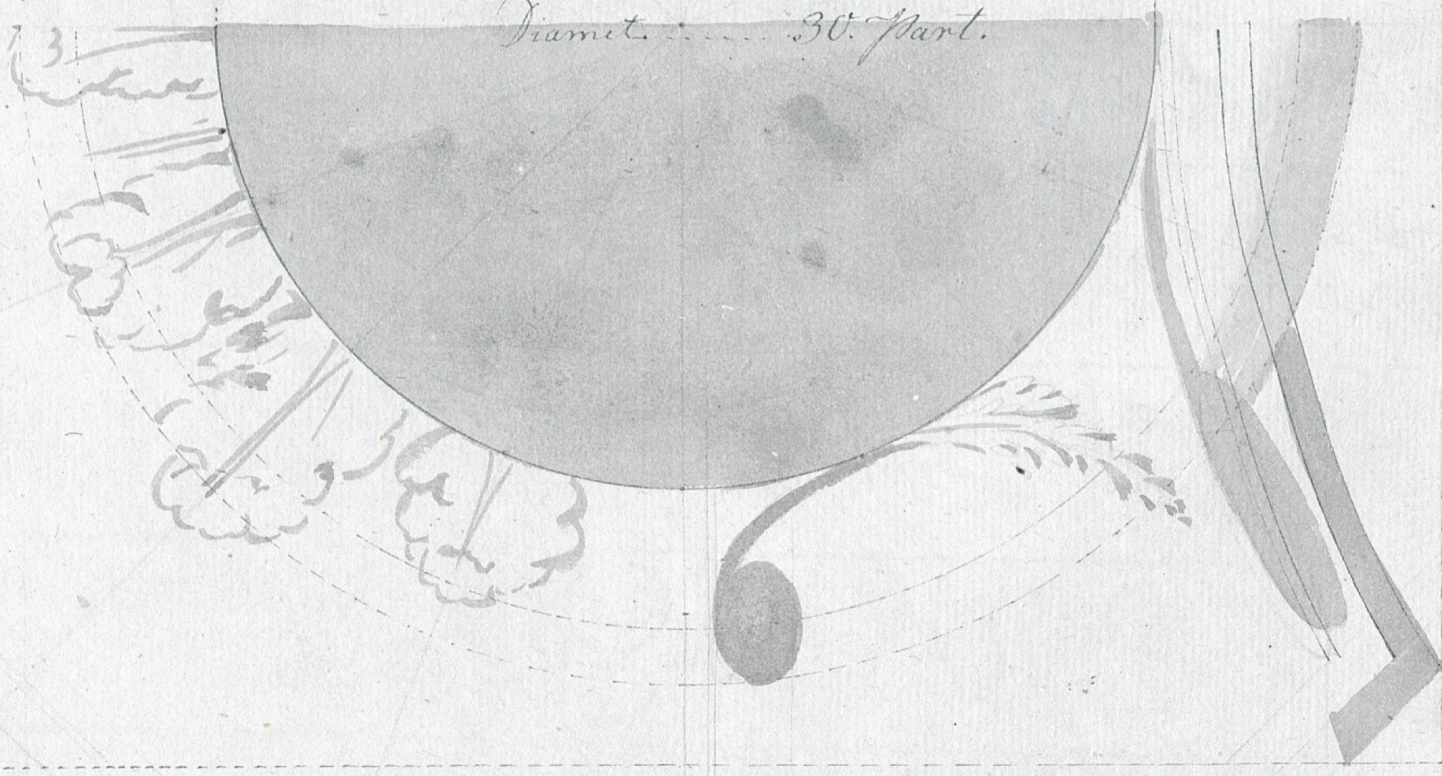


1 1/2  
 1 1/2  
 2 1  
 2  
 3  
 4  
 6  
 3  
 4  
 3  
 9  
 9  
 1 2  
 45. part.

*Corinthian Capital*



*Diamet. .... 30. part.*



*18. part. m. 1. Mod. 1/2. 25 = 100*



Architravs

Abacus.

Torus.

Astragale.

Griechis.

Doriz Capital  
und Säulenstück  
am Tempel der  
Minerva in Athen  
wie auch an den  
Propyläen  
nach Stuart  
1768.

1. Modul.

4. 10. 7 1/2.

Die Säule selbst hat 12. Modul.

6. Modul.

Der ganze Stiel enthält 5. Modul zur Höhe

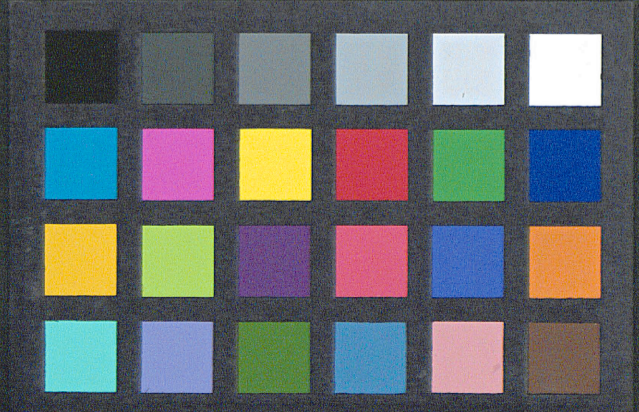
1. Modul

Ablauf

3 6 12 18 24 36

48. part of  
2. Modul.

d. 15<sup>ten</sup> Jun.  
1816. Athen.



1. Modulus

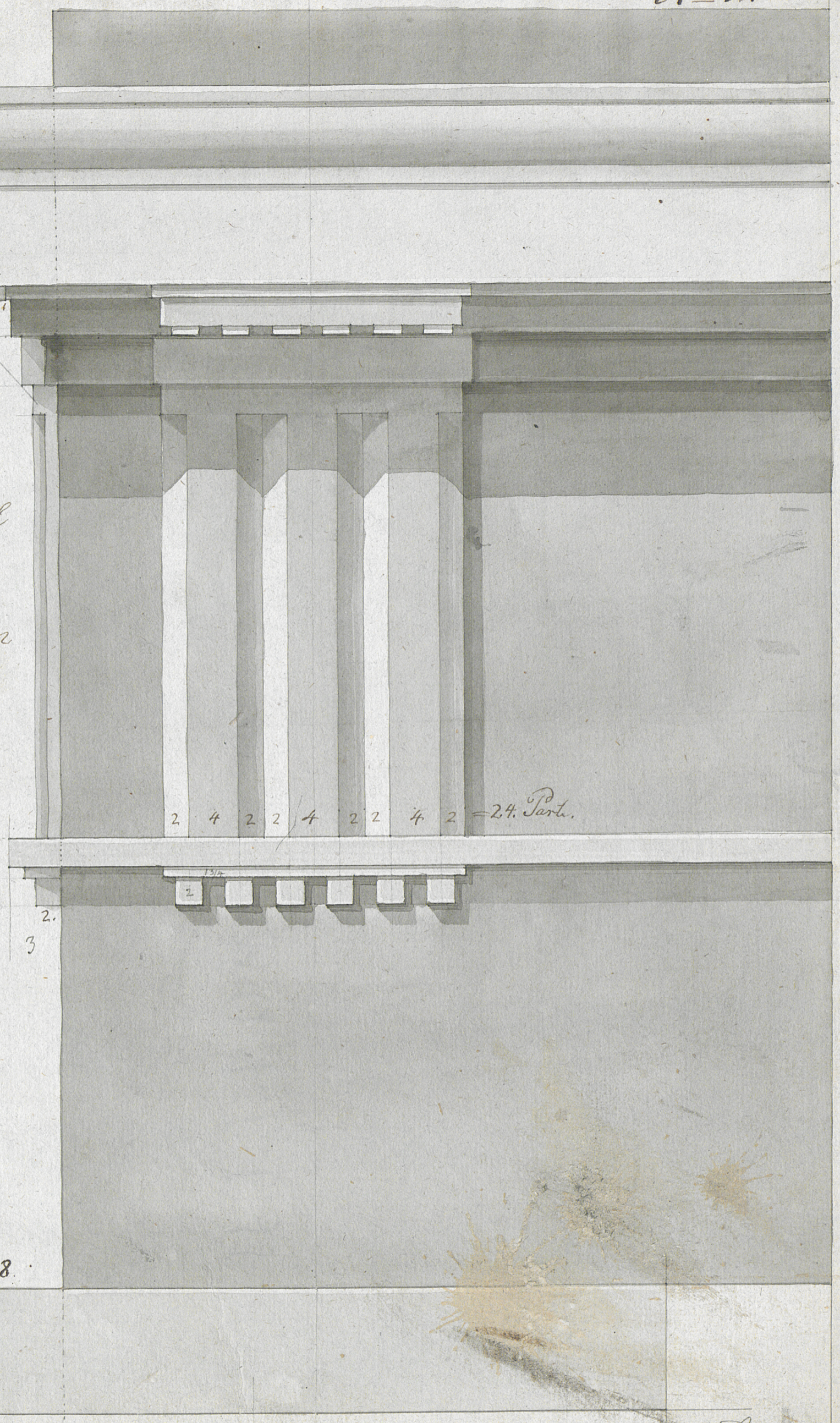
Corona. Sima. 1. Modul

Topbarres 1/2 Modul

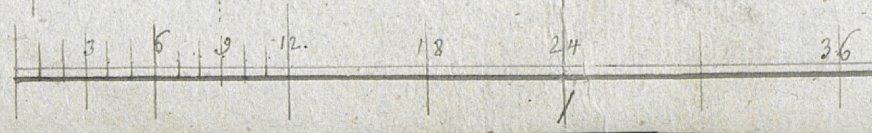
Epistylion. 1/2 Modul

Capitulum 1. Modul

Griechisch:  
Dorisch: Gebälke  
am Tempel der  
Minerva  
auf Acropolis in  
Athens.  
nach Stuart.



2 4 2 2 4 2 2 4 2 = 24. Part.



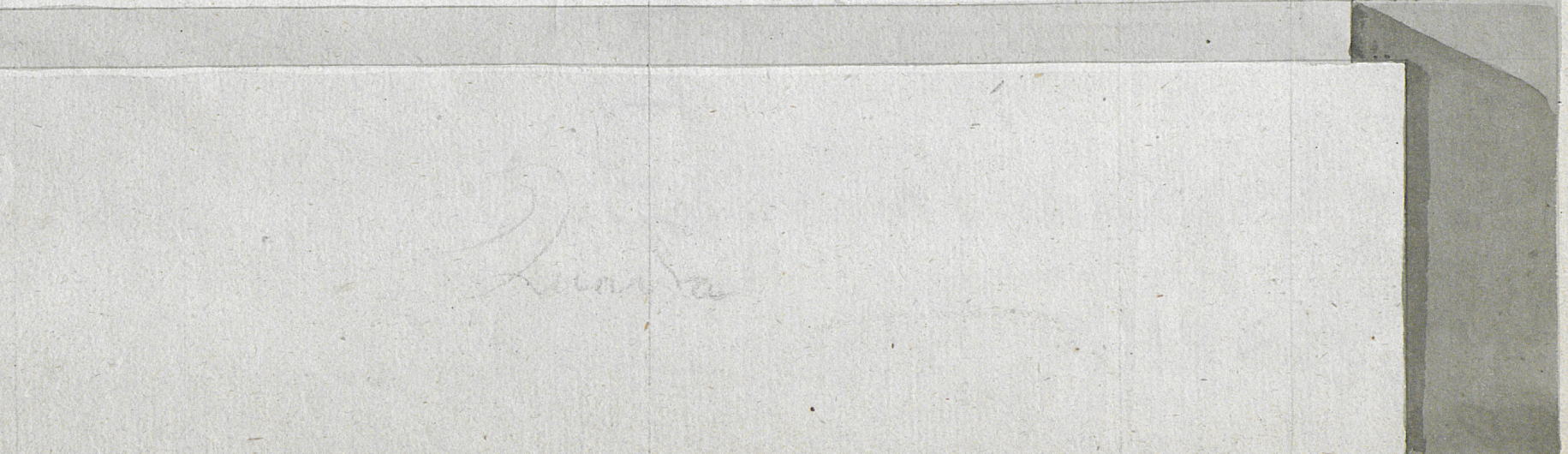
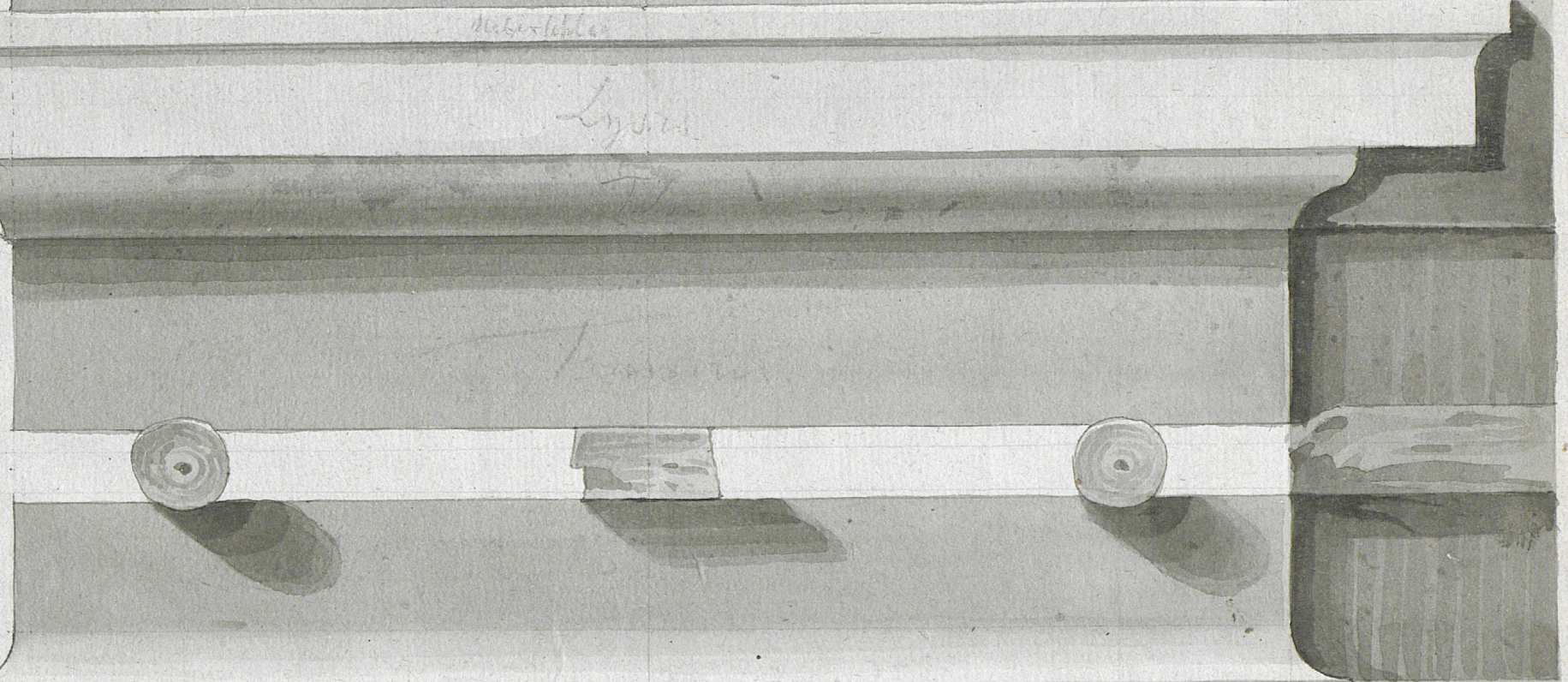
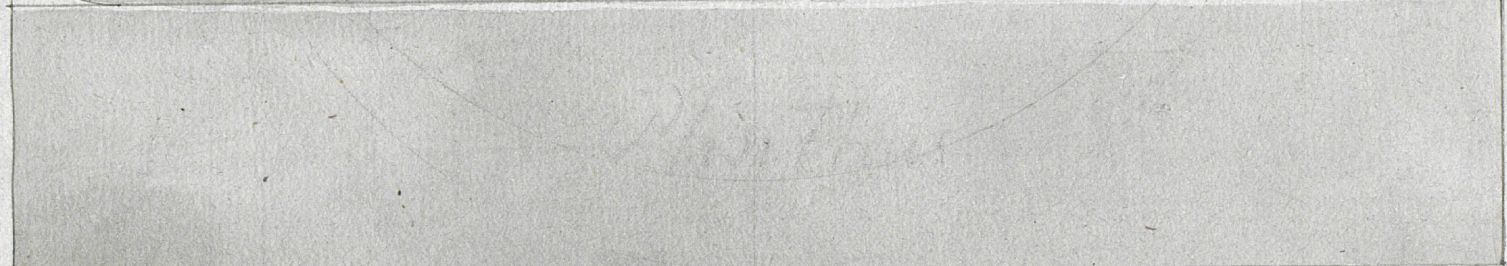
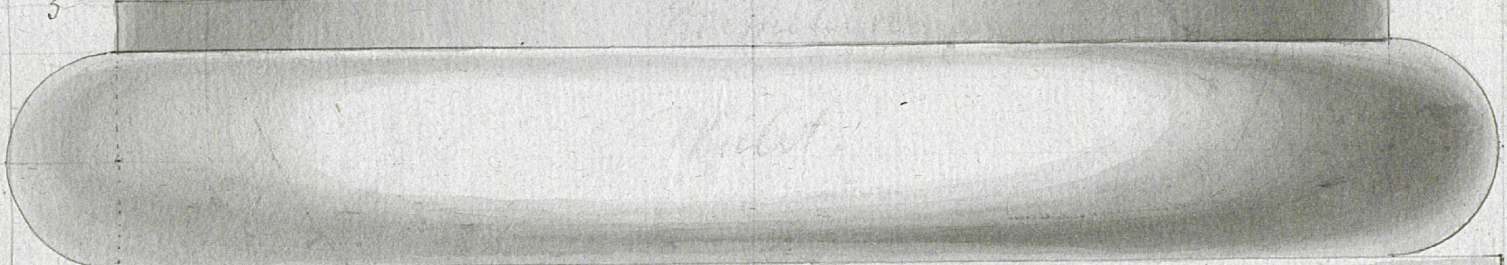
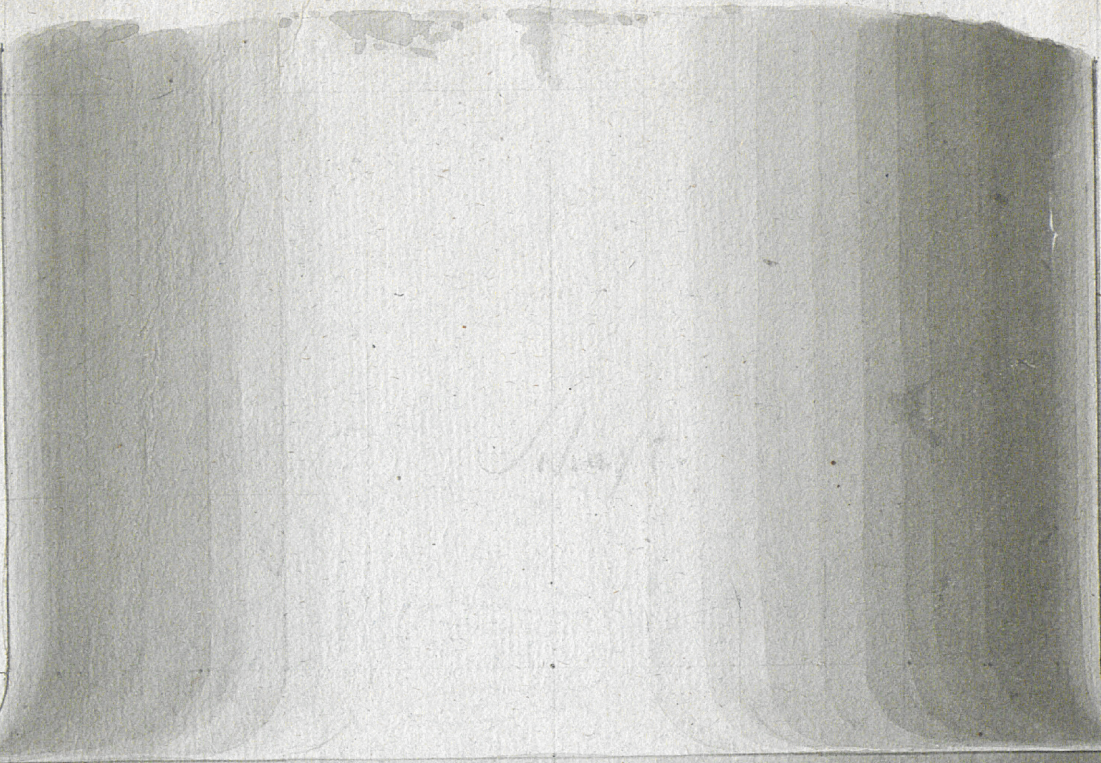
48. Part oder  
2. Modul

Athen.  
d. 16<sup>te</sup> Junius  
1816



Toscanisch:  
Uebergang von  
Dorisch zur  
Ord-

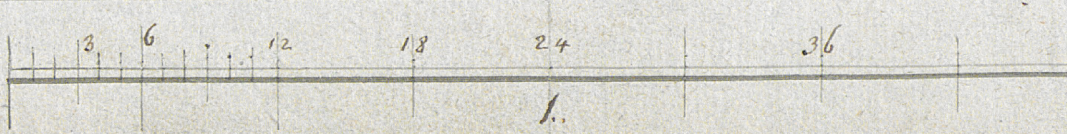
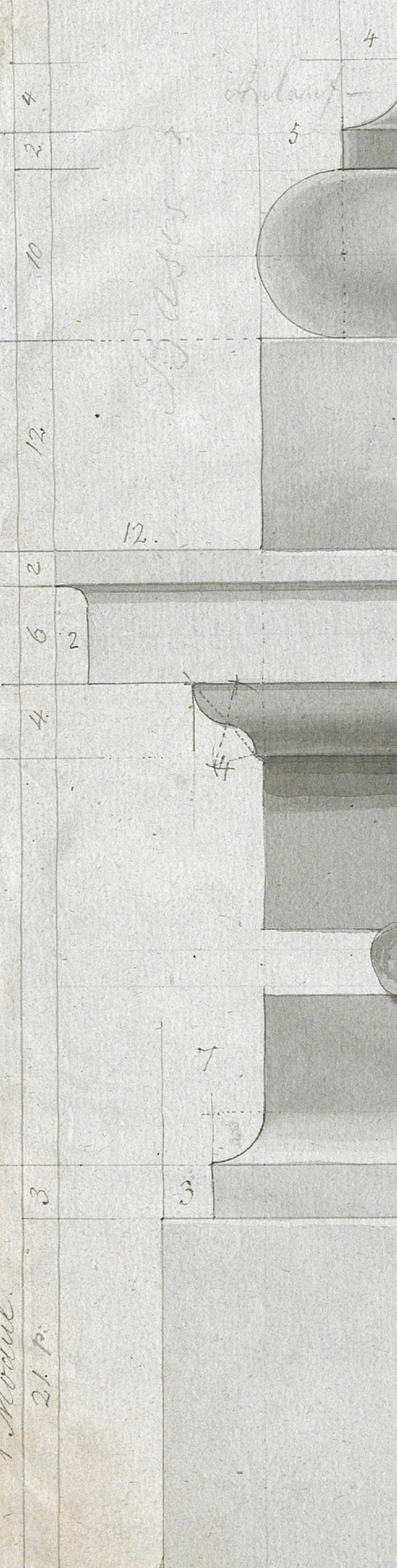
Säulenfuß  
der griechisch  
Römisch dorisch  
-nung



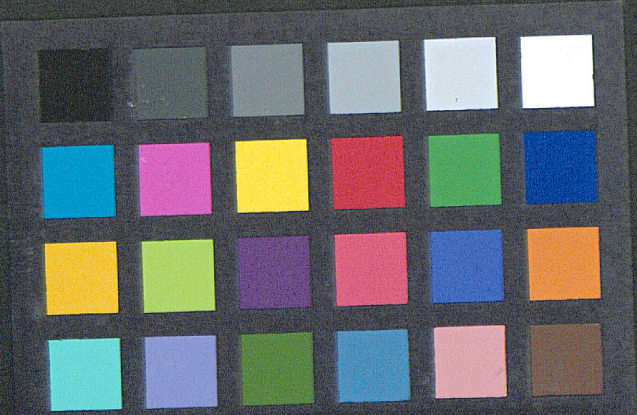
1 Modul.

1/2 Modul.

1 Modul.  
2 1/2 P.



48 Part. oder  
2. Modul.  
d. 17. = 18<sup>h</sup>  
junius. 1816.



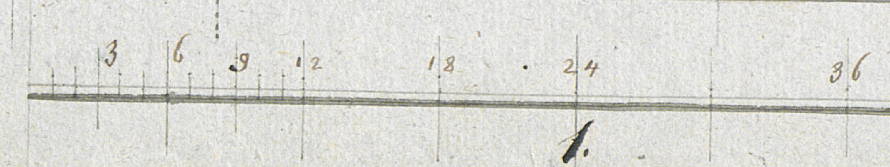
1. Modul. 3. part.

1. Modul 3. part.  
10  
12  
14

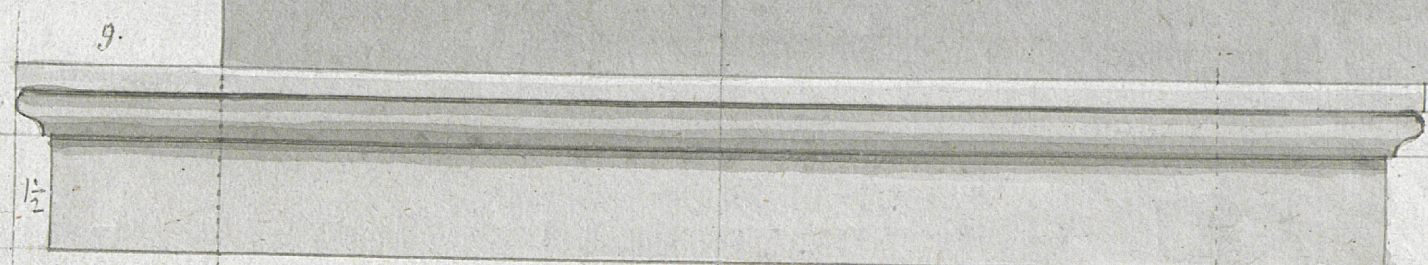
1. Modul. 10 1/2 part.  
3 1/2 part.

1 1/2 Modul  
36 part

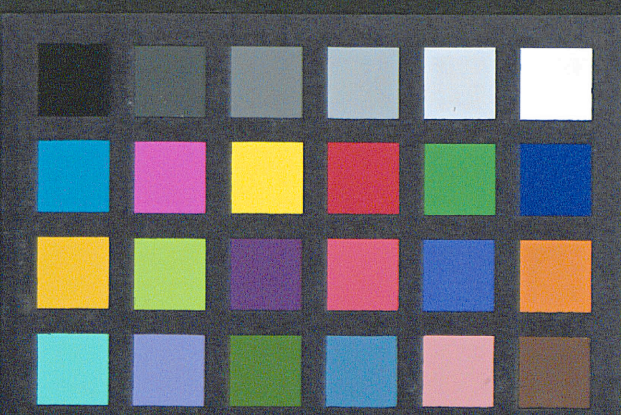
3.  
5  
2  
1



Toscanisches  
Gebälke  
als Uebergang von  
der Alt Dorischen  
zur Ionisch: Doris:  
Ordnung



158 Part oder  
2. Modul.  
H. W. v.  
d. 18<sup>ten</sup> und 19<sup>ten</sup>  
Junius 1876.

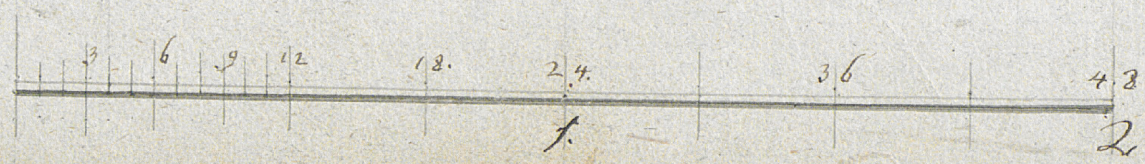


# Toscaniz: Capital und Architrav

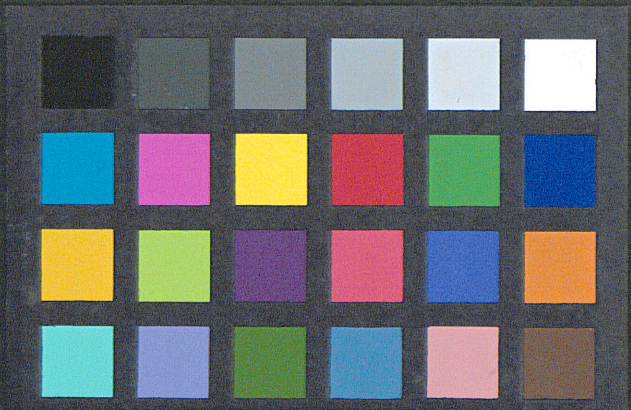
1. Modell 10 1/2 part.  
30 1/2 part.

1. Modell.  
8  
8  
2  
8

12



Albin Junius  
d. 19<sup>ten</sup> Junius  
2. Modell. 1816.



Toscanis: Gebälke nach Vitruv.

9 No 4. b.

Cornices 1. M. 4. p.

Fries 1. Mod. 2. p.

Architravs 1. Modul.

Capitulum

1 1/2 Modulus.

4

1

5

6

1/2

4

4

1

1/2

6

1/2

4

4

2.

2.

5

Abacus

3

6

9

12.

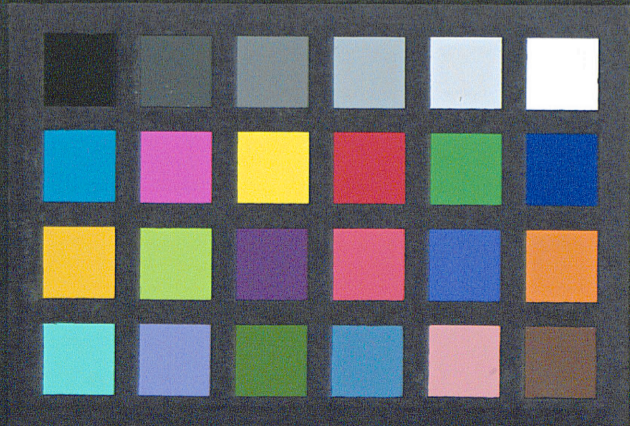
18

24 Part

1.

2. Modul.

9 1/2 10 1/2 Jun: 1816.

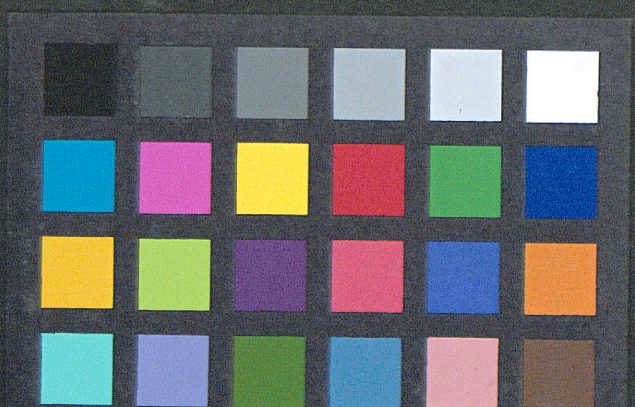


Joniz. Säulen.  
fuß  
und postament.



3 6 9 12 15 18 24 30 36. Partes  
 1 16 12 18 24 30 36 48  
 2. 48 Moduli.

Min.  
 8: 9<sup>te</sup> Junius  
 1816.

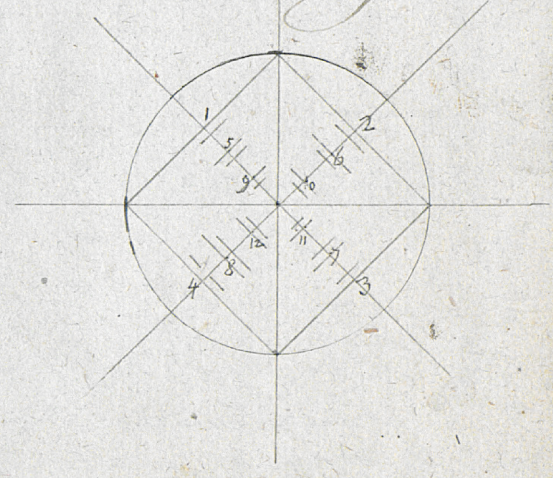


Alt Ioniz.  
Capitulum

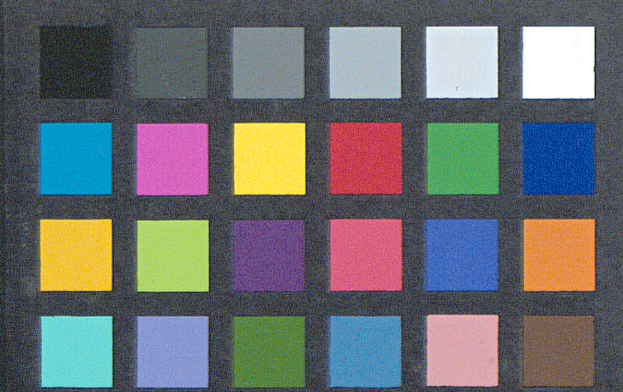
1 1/4 Modul



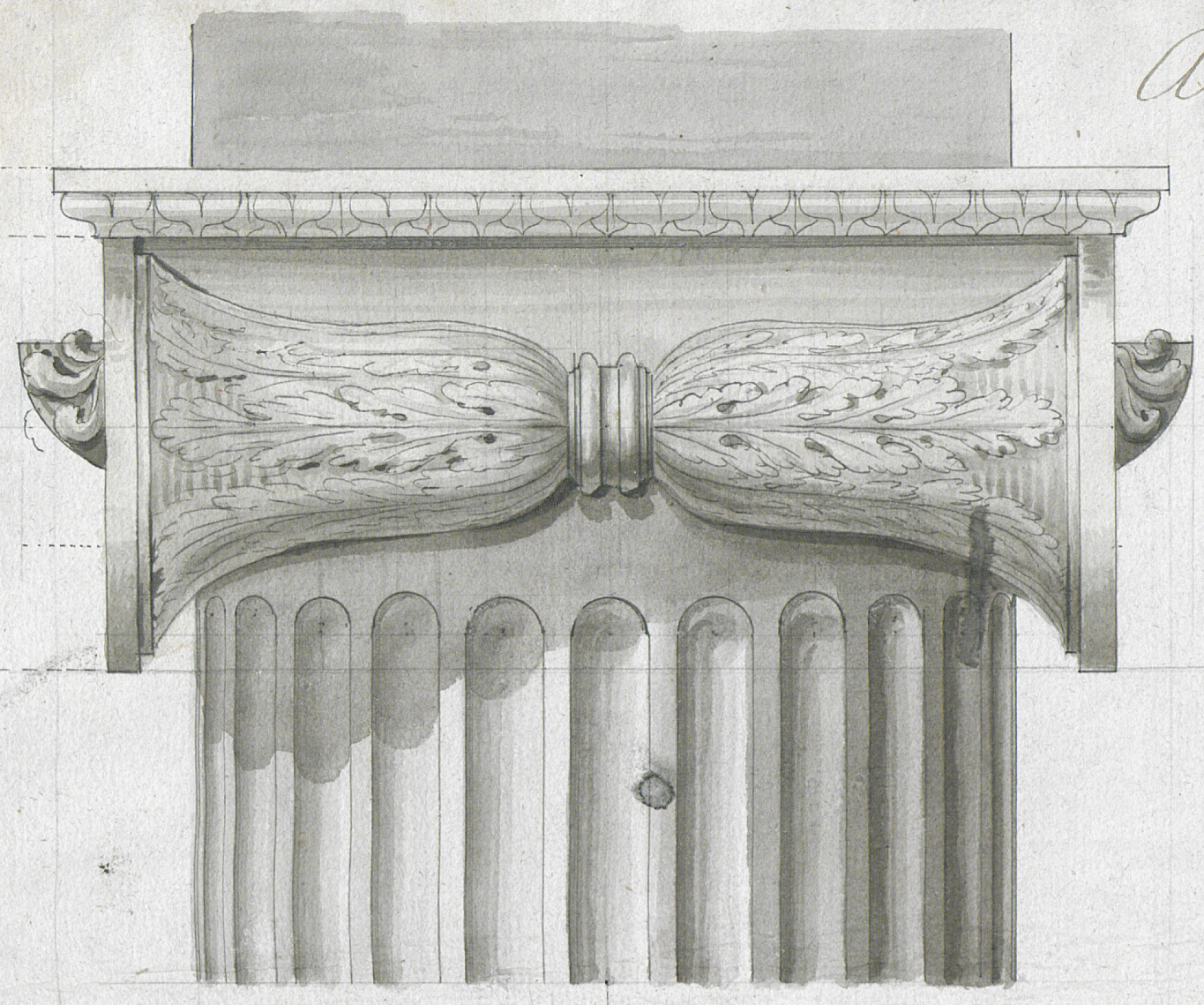
Das Auge



Altus  
3. die 6. Jun. 1816.



Alt-Joniz:  
Capital  
von der  
Seite



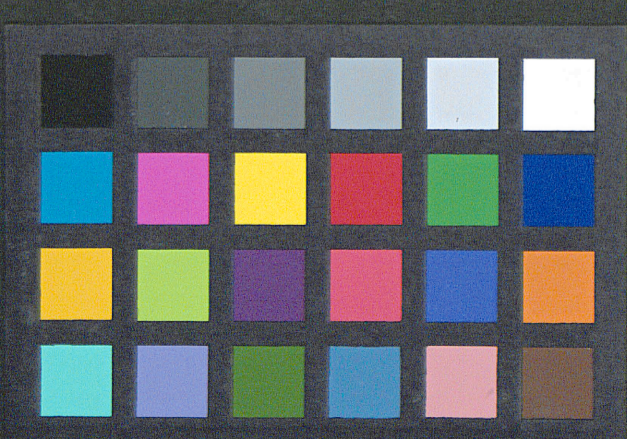
Grundriß

Alt-Joniz:  
d: 7<sup>te</sup> 8<sup>ten</sup> Junius  
1816.

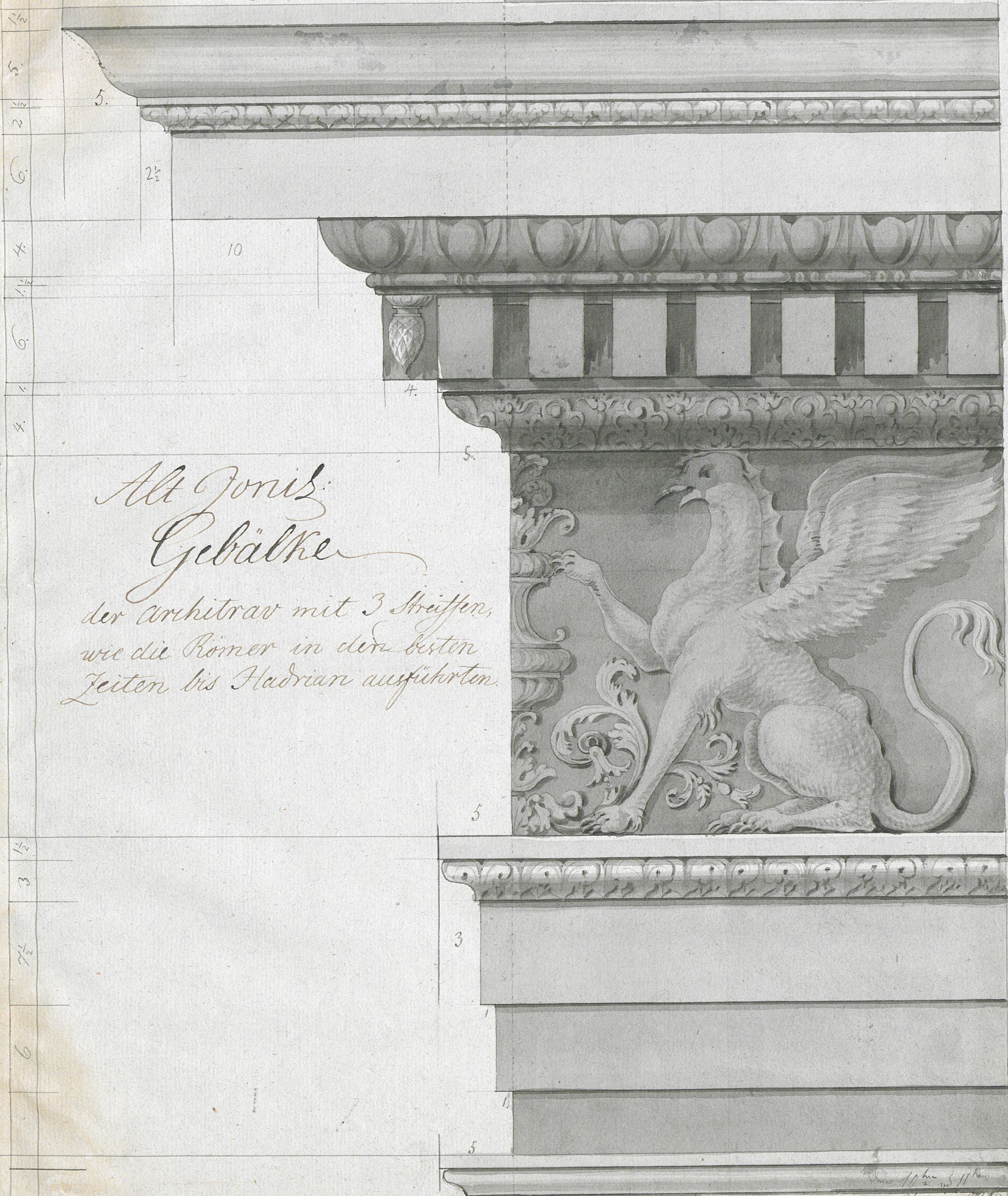
2  
4  
16 part.

1  
1/2  
14  
14  
1/3

3 6 9 18 27 36. Partes  
1 2 Modul



31. part.

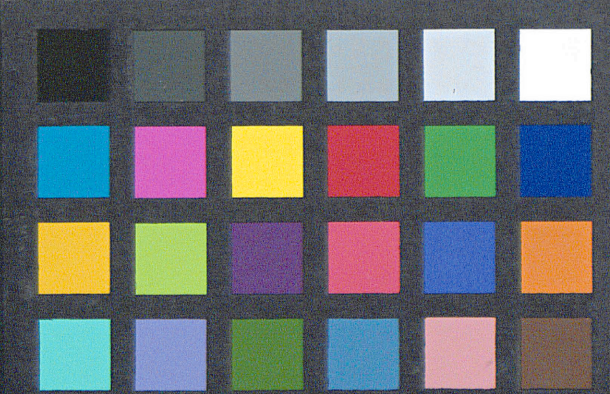


# Alt Ionis Gebälke

der Architrav mit 3 Streifen,  
wie die Römer in den besten  
Zeiten bis Hadrian ausführten.

Das 10<sup>e</sup> bis 11<sup>e</sup> Teil  
Junius 1810

36. Part  
2. Modul  
J. K. S.



14  
*Joniz. Säulen.  
 Fuß und Stübel  
 am Tempel der Diana  
 vor Athen am Ufer  
 des Illyssus.*

*N<sup>o</sup> 15.*



↑ 15 16 19 12 18 24 36 48 Part. d: 12. <sup>1</sup>/<sub>2</sub> Junig. 1816. J.H.Kav.  
 ↑ 3 6 9 12 15 18 27 36 Part od. 2 Modul



1. Mod. 9. Part.

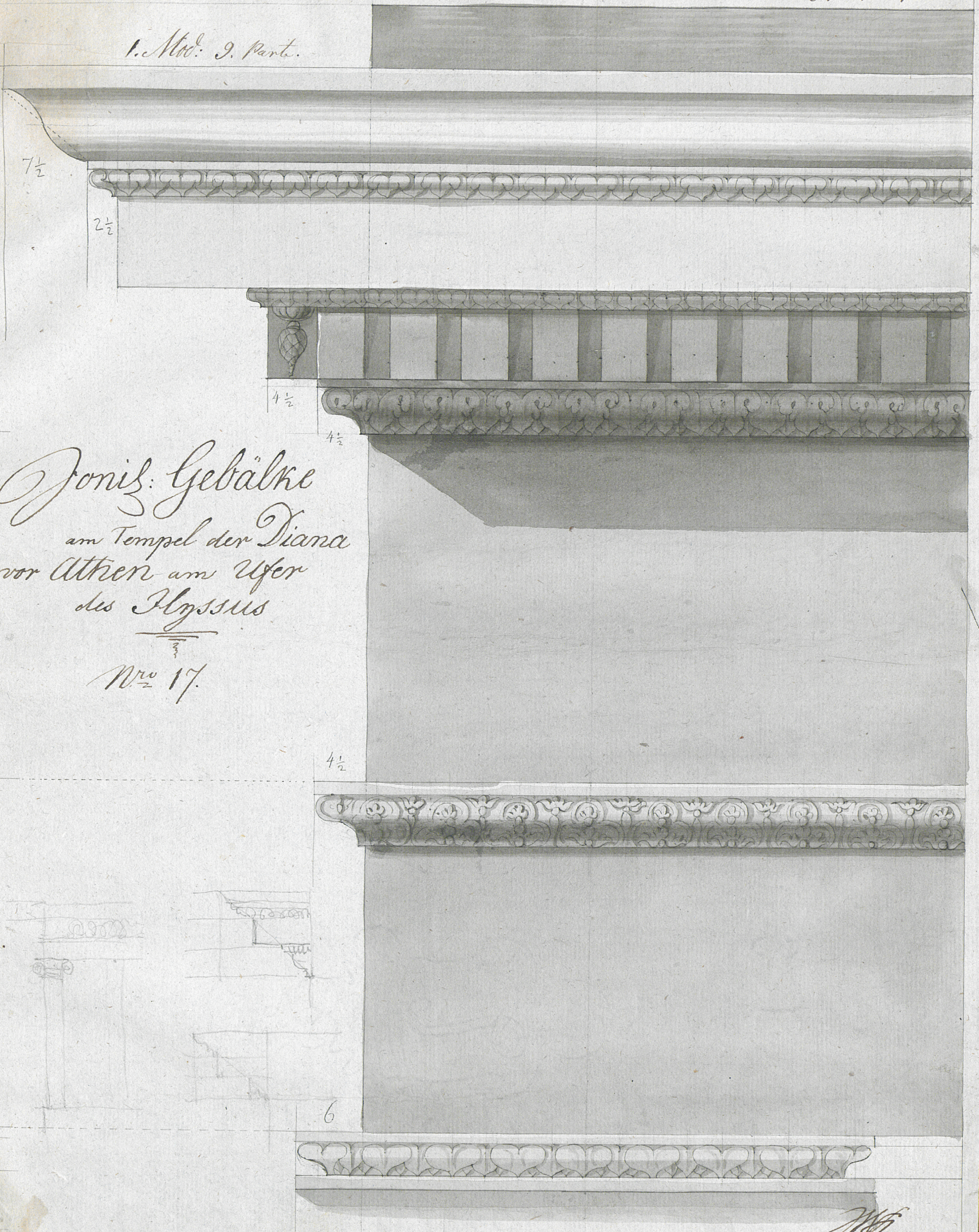
1. Mod. 9. part

1. Mod. 7 1/2 part

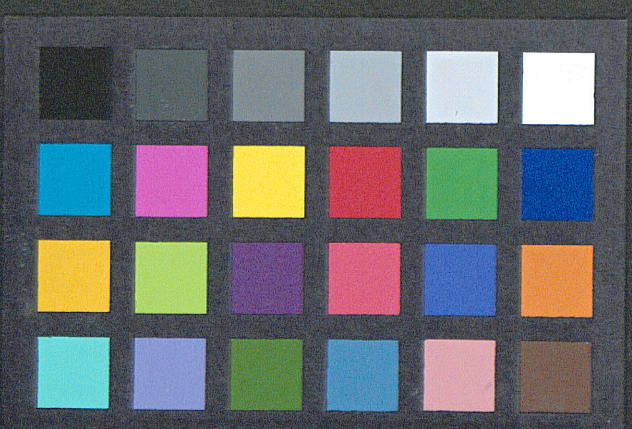
1. Mod. 7 1/2 part

Joniz: Gebälke  
am Tempel der Diana  
vor Athen am Ufer  
des Illyssus  
No 17.

|    |       |       |       |
|----|-------|-------|-------|
| 12 | 2 1/2 | 6 1/2 | 2     |
| 8  | 8     | 6 1/2 |       |
| 5  | 4 1/2 | 6     | 4 1/2 |
| 4  | 4     | 4 1/2 | 4 1/2 |
| 4  | 4     | 4 1/2 | 4 1/2 |



W. G.  
Am 13<sup>ten</sup> Junius  
1816. als der Prinz  
von Oranien mit der  
Großfürstin Anna pers.



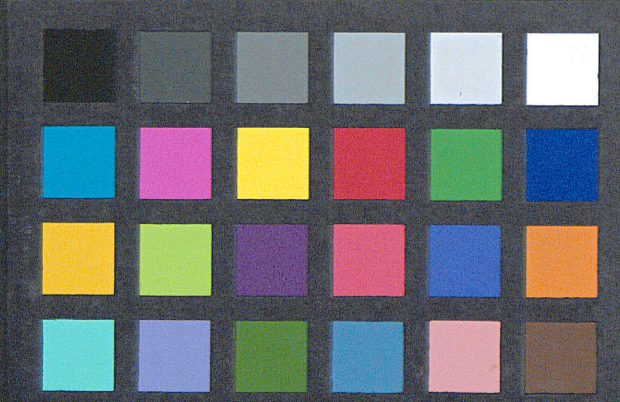
Corinthisch.  
und postam.  
oder Rotonda

Säulenschaft  
im Pantheon  
in Rom



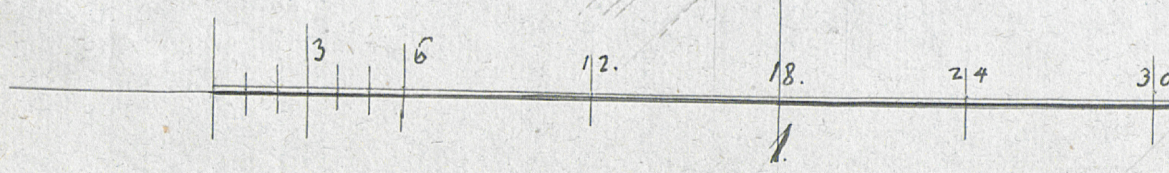
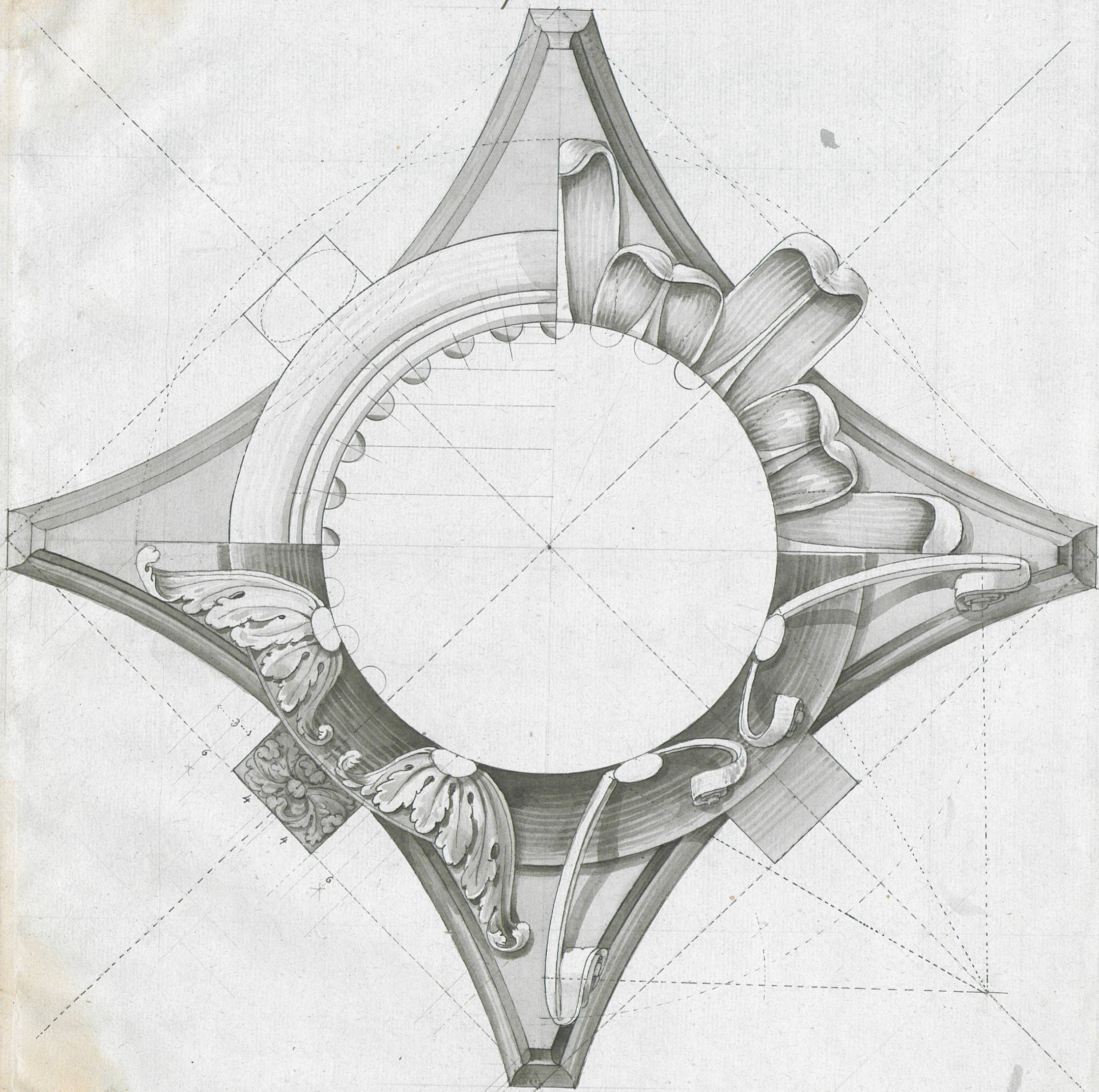
4/8. Part oder  
2. Modul.

M. Krauß  
d. 20<sup>ten</sup> Junius.  
1810.



Grundriss des Corinthischen Capitals.

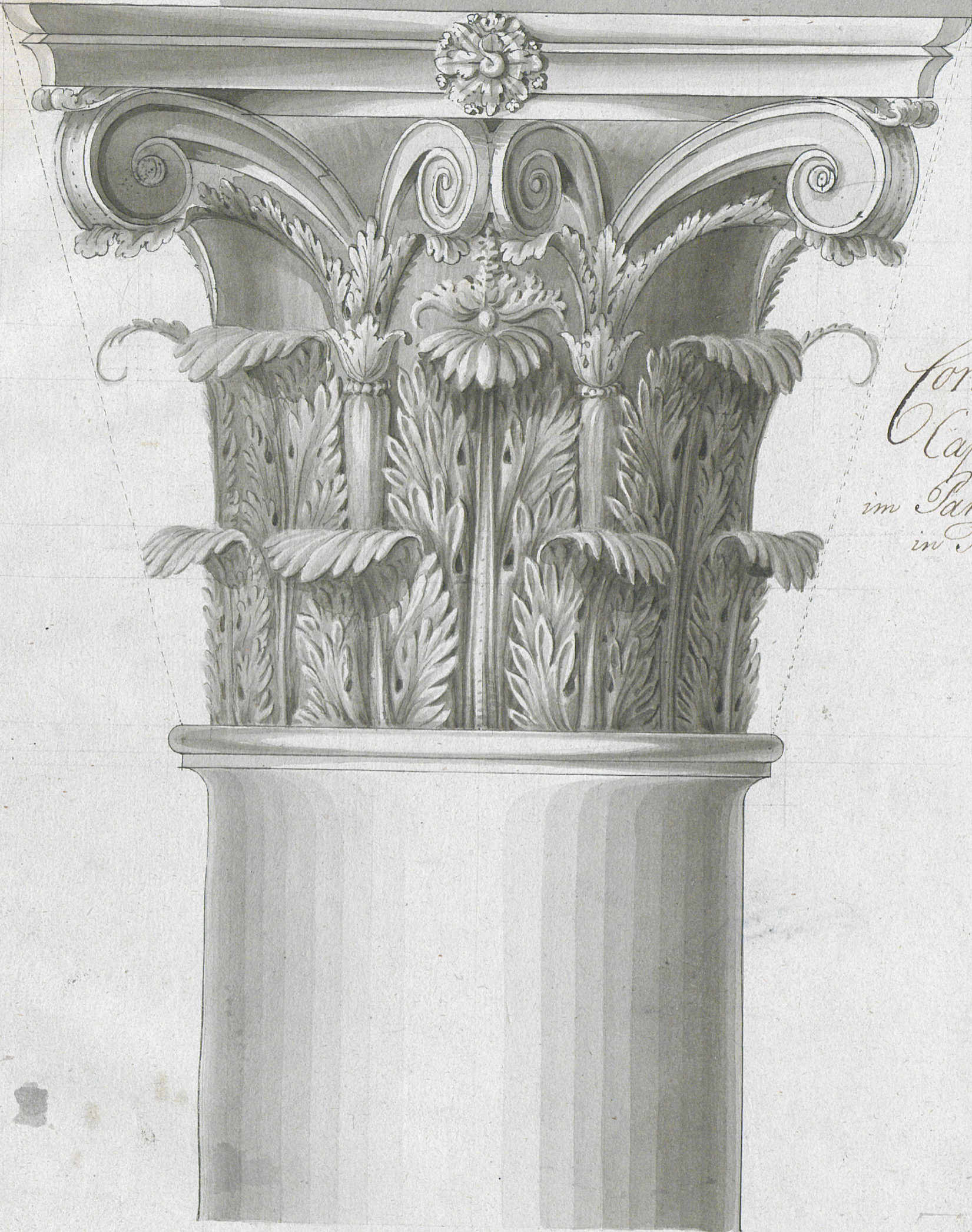
N<sup>o</sup> 19. 18



36. Partes  
2. Modul.  
M<sup>us</sup>: In 8<sup>ten</sup> Jun. 1816.  
franz. Nativ. Monn. Min. Arch.



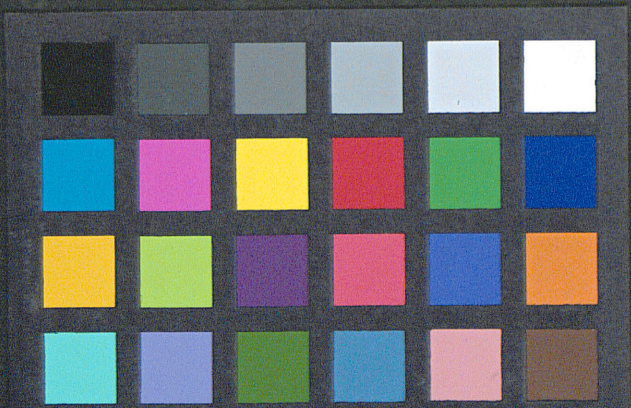
|     |   |       |       |       |
|-----|---|-------|-------|-------|
| 6.  | 2 | 3 1/4 | 1 1/2 | 2 1/4 |
| 18. | 9 | 7     |       |       |
| 15. | 4 |       |       |       |
| 11  |   |       |       |       |
| 4   |   |       |       |       |
| 11  |   |       |       |       |



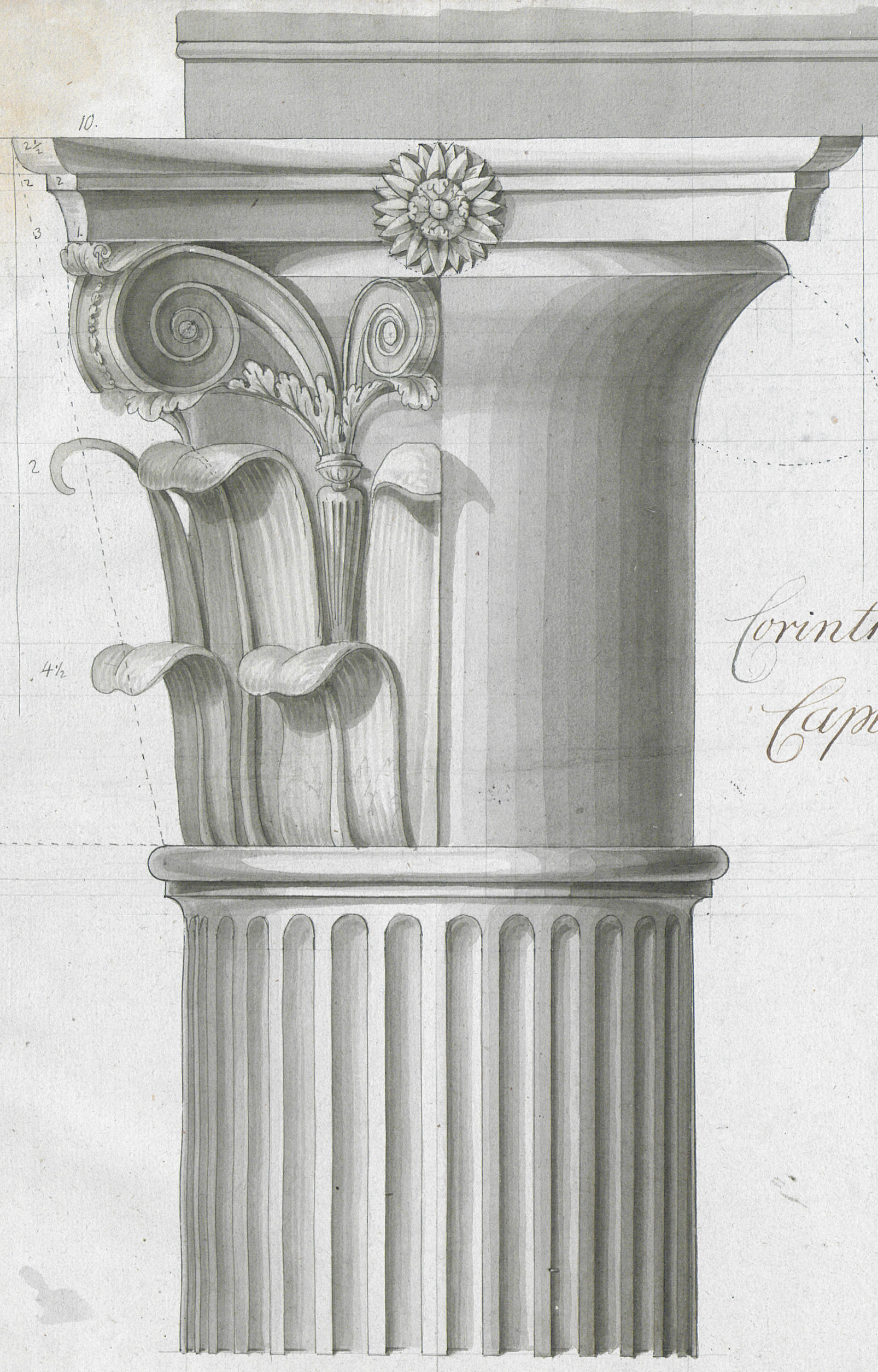
*Corinthian  
Capital  
im Pantheon  
in Rom.*

|   |   |   |    |     |    |    |
|---|---|---|----|-----|----|----|
| 3 | 6 | 9 | 12 | 18. | 24 | 36 |
|   |   |   |    |     |    | 1. |

*Mr.  
Jan 23. 24. Jun.  
1816.  
48. Part. after  
2. Model.*



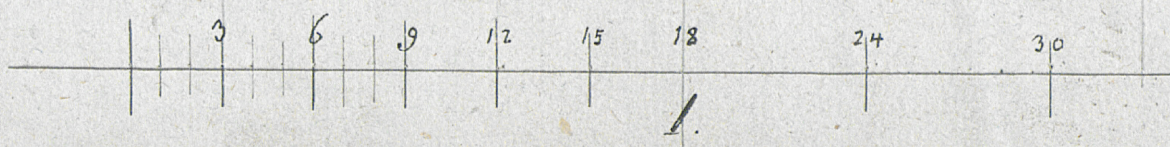
1  
 5  
 1  
 4  
 3  
 2  
 6  
 4  
 3  
 9  
 3  
 9  
 1  
 2  
 3  
 6  
 9  
 12  
 15  
 18  
 24  
 30  
 36 Part  
 2. Modul.



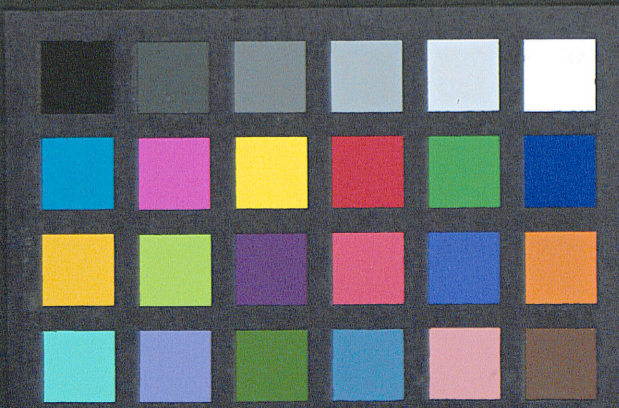
Nro. 21

Corinthisches Capital

H. W. v.  
 d. 9<sup>ten</sup> Junius  
 1810.



36 Part  
2. Modul.



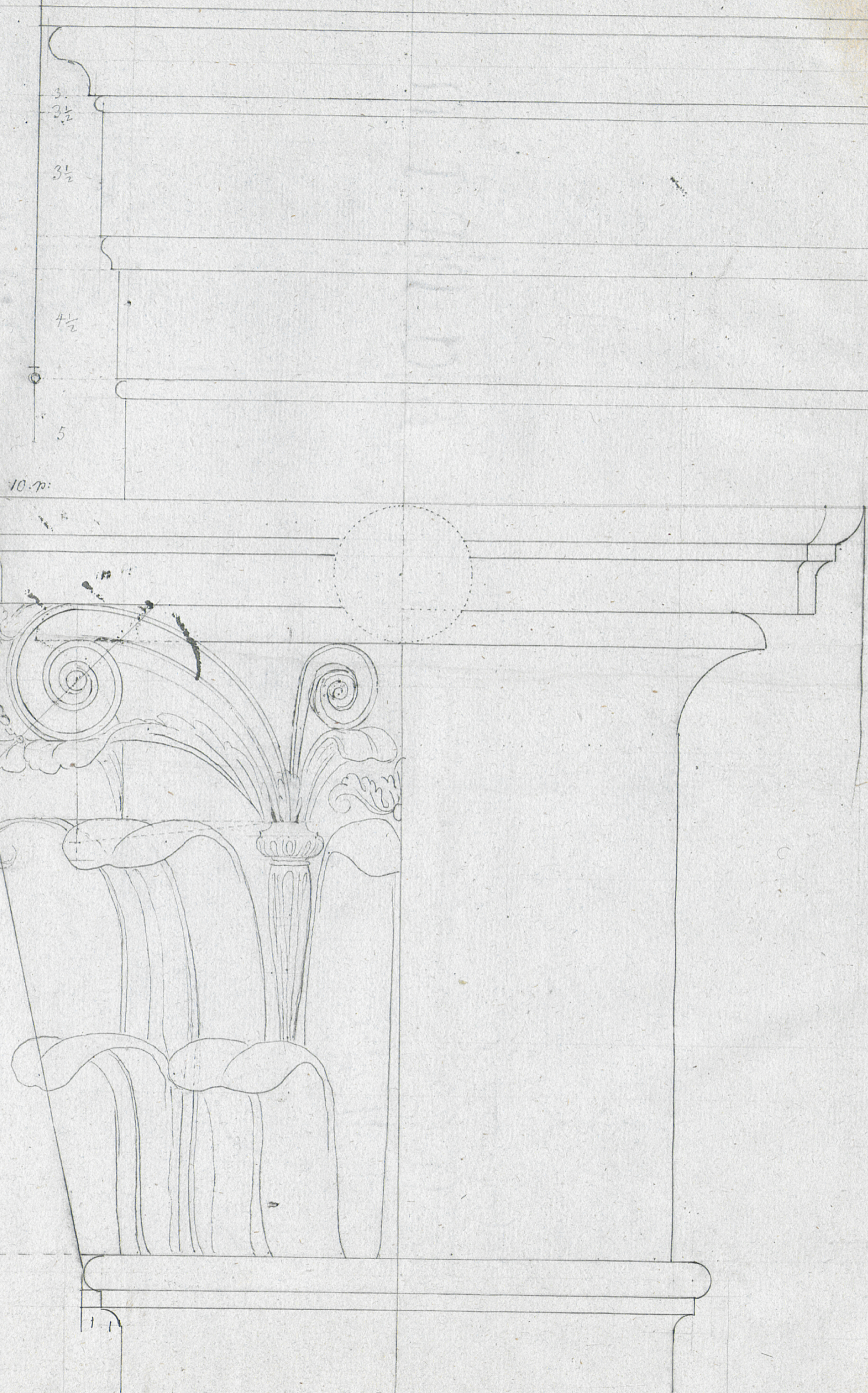
Frise

1 1/2 Modul. Architravs.

6 p. Abakus.

Capitulum. 2 1/3 Modul = 42. Part.

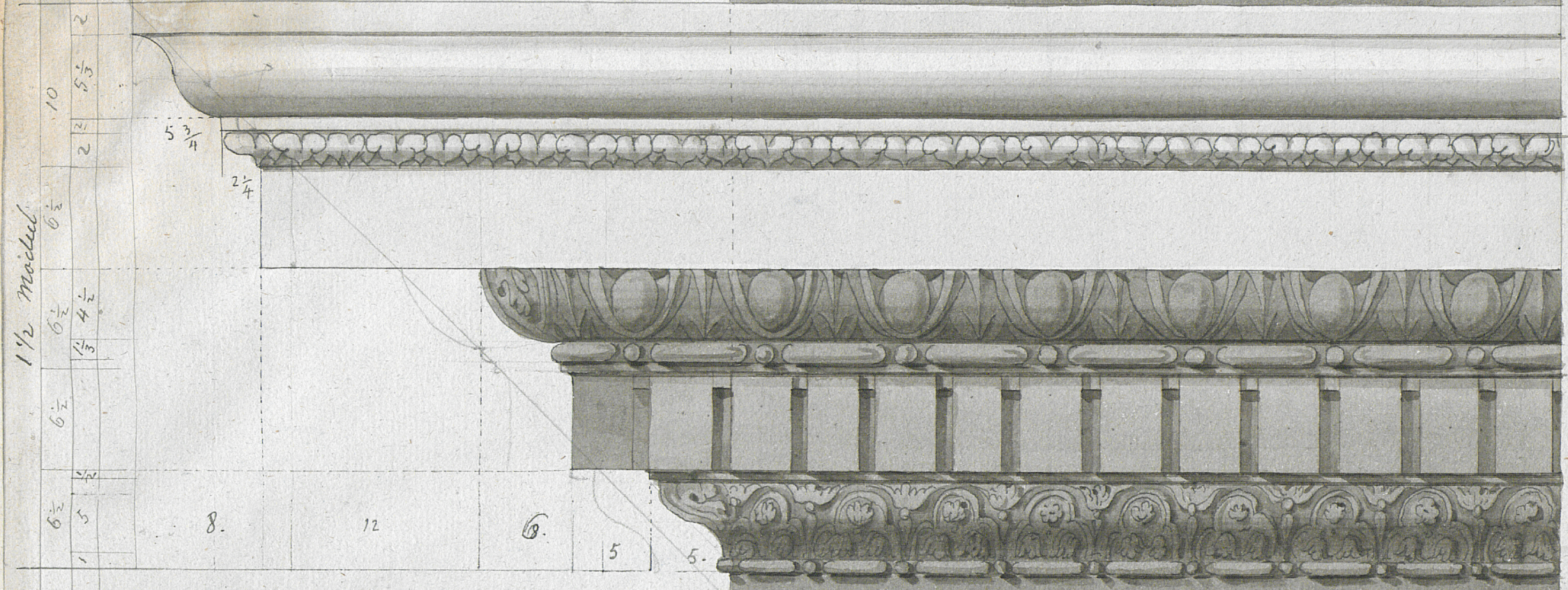
Abogale.



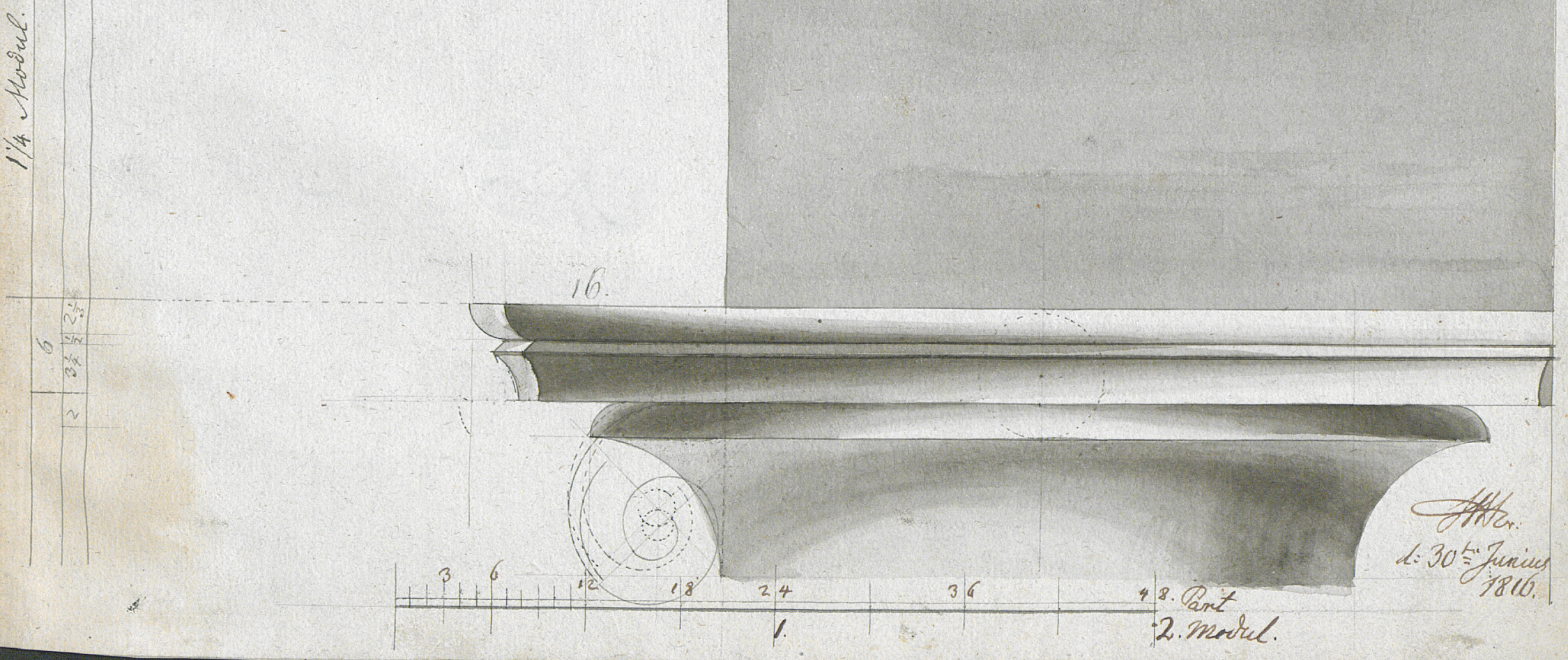
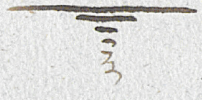
36. Part.  
2. Modul.



1 1/2 Modul.

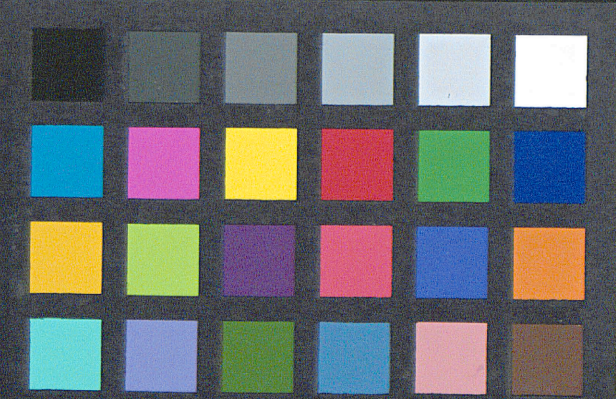


Corinthis: Gebälk  
 im Pantheon oder  
 Rotonda in Rom.

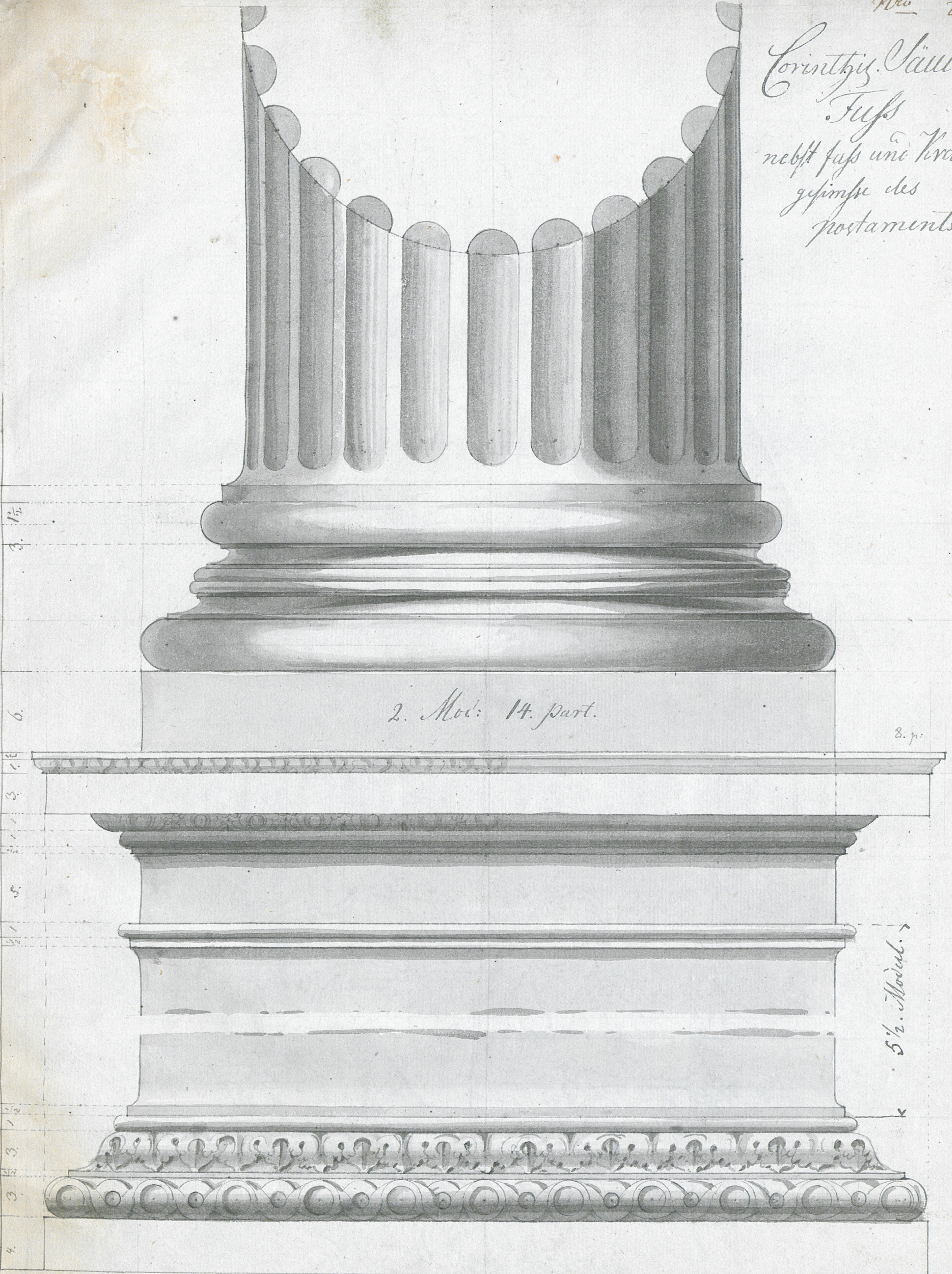


Handwritten signature and date:  
 H. W. 1. 30<sup>te</sup> Junius 1816.

48. Part  
 2. Modul.



Corinthig. Säulen.  
Fuß  
nebst Fuß und Verzierung  
gesimse des  
Postaments.

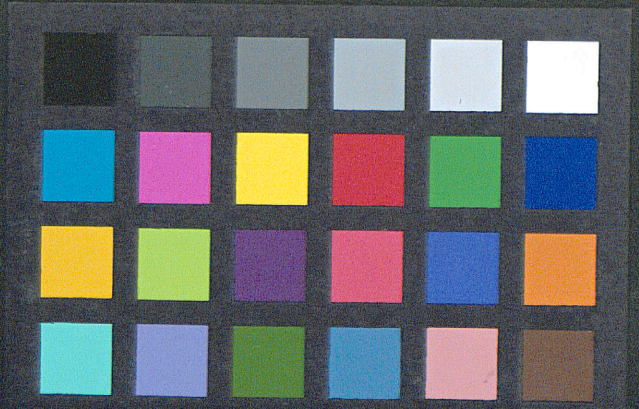


2. Mod: 14. part.

8. p.

5 1/2. Modul.

13 1/2 p.  
 3 6 9 12 15 18. part.  
 oder 1. Modul. N<sup>o</sup> 23 86r. 1808.



31. Part.

20. Part.

3 1/2 = 24 + 7 1/2 Part.

3 1/2 = 24 + 7 1/2 Part

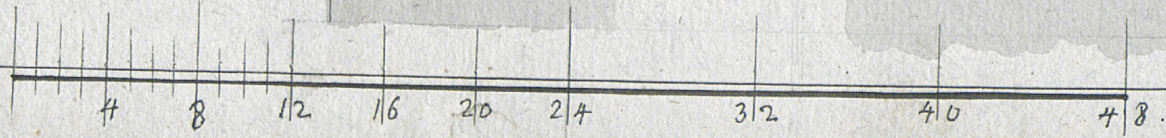
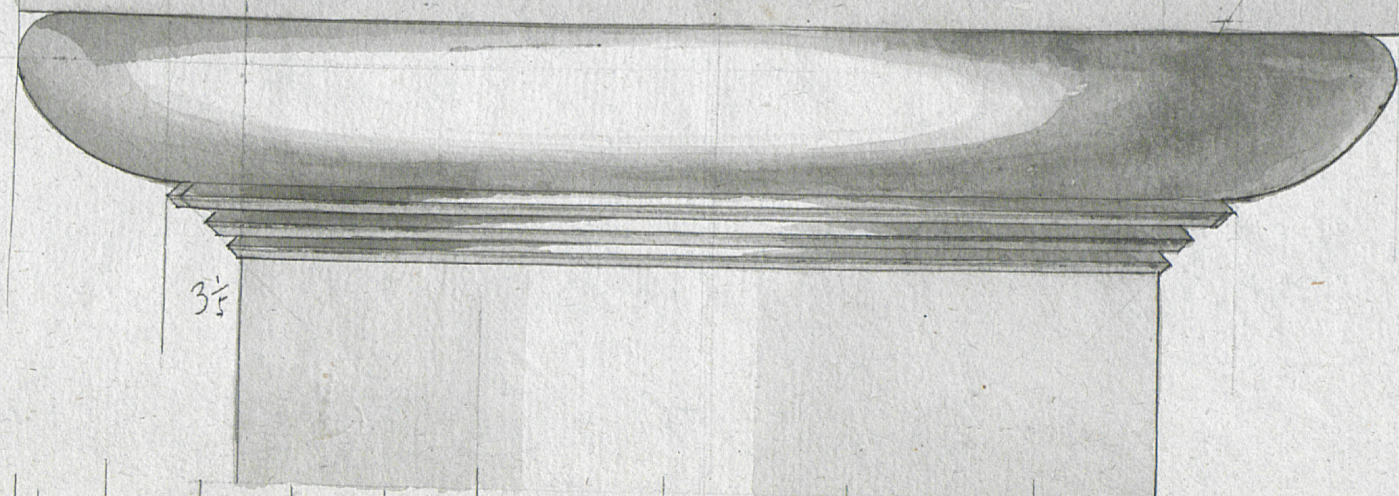
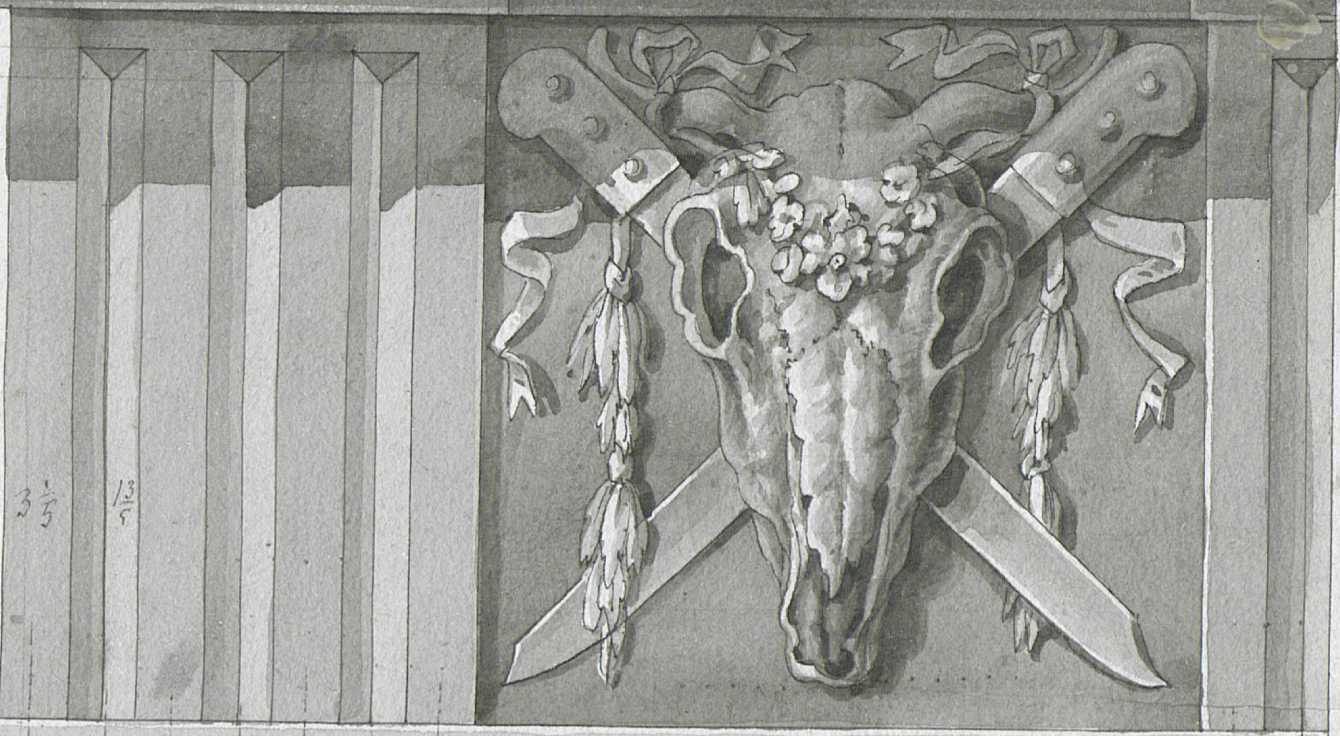
19. p.

10

|       |       |
|-------|-------|
| 3 3/5 | 1 1/5 |
| 2 2/5 | 7 1/5 |
| 4 3/5 | 7 1/5 |
| 4 4/5 | 1 1/5 |
| 2 3/5 | 4 4/5 |
| 4 4/5 | 2     |

|       |       |
|-------|-------|
| 2 2/5 | 2 2/5 |
| 2 2/5 | 2 2/5 |

3 1/5

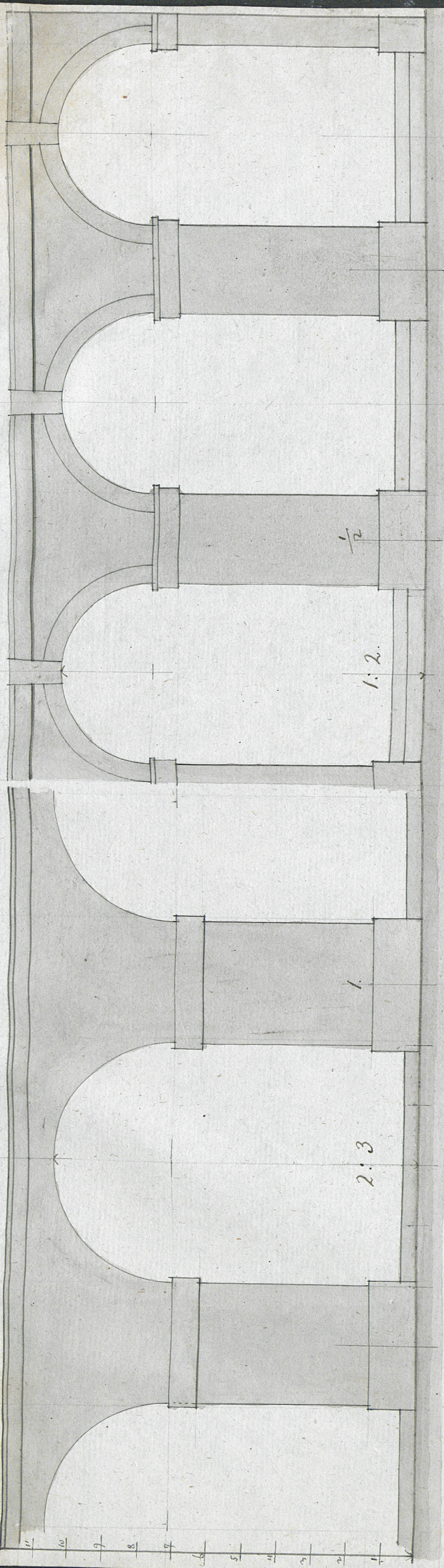


Part. odtr 2. Modul.



*Araden oder Bogenstellungen.*

12 Fuß



2:3

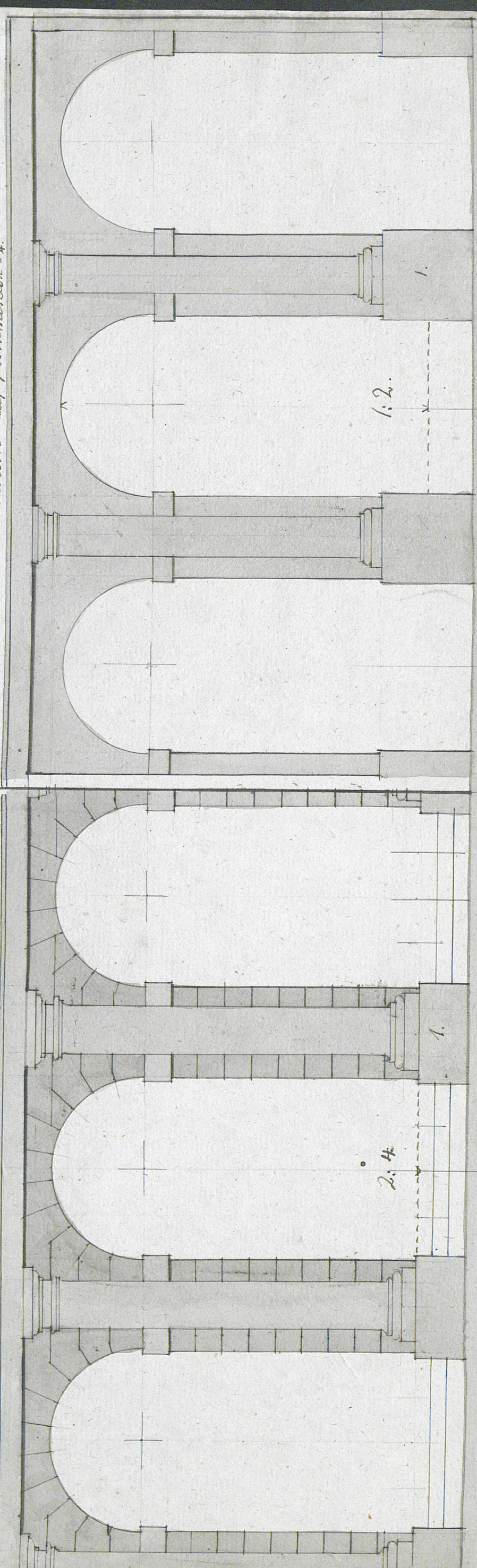
1

1:2

$\frac{1}{2}$

*mit Pilastern auf einem Plinthus*

*mit Pilastern auf Postamenten =  $\frac{1}{4}$*

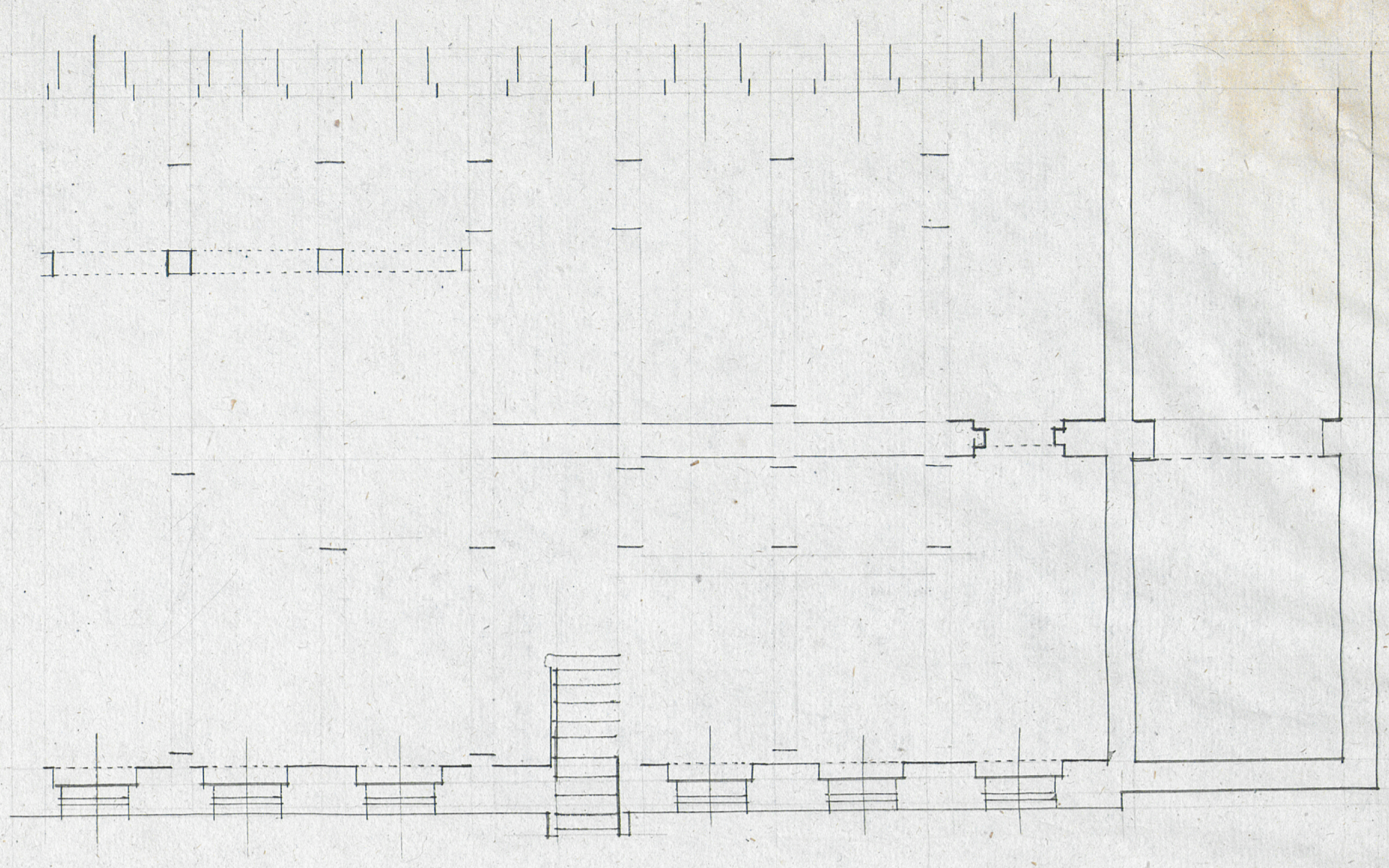


2:4

1

1:2

1





Kranz-Leiste

Sparrnkopf oder  
metallis. Modillon

Metope oder



Zwischenfeld.

Trochilite

oder

Triglyphe

Trochilite oder Gutter

Gebälk  
oder

Hauptgesims  
zum Riffe

von  
Ernisthall

bei  
Sagnitz.

Ein Medallion

