

VORBUSE
PROGENY TESTING STATION



TARTU 1966

Compiled by
A.Mölder

202932

1 IX
1A-4935

The Estonian Research Institute of Animal
Breeding and Veterinary Science —————

V O R B U S E
P R O G E N Y T E S T I N G S T A T I O N

————— Tartu 1966 ———

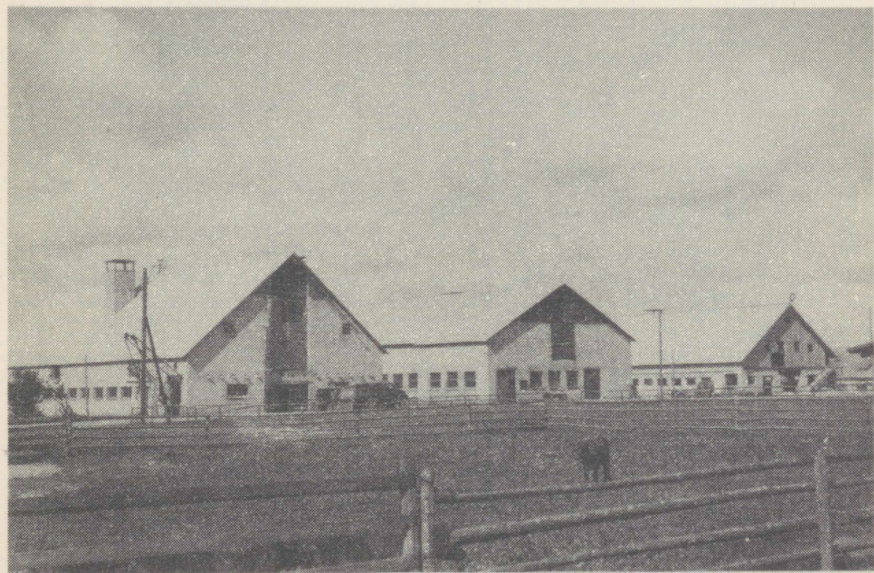
Tartu Riikliku Ülikooli
Raamatukogu

202932

Special Progeny Testing Stations (Experimental Stations for evaluation of the bulls according to qualities of progeny) have been set up on the farms attached to the Estonian Research Institute of Animal Breeding and Veterinary Science in 1960-1964. Artificial Insemination Stations also work on the basis of these farms.

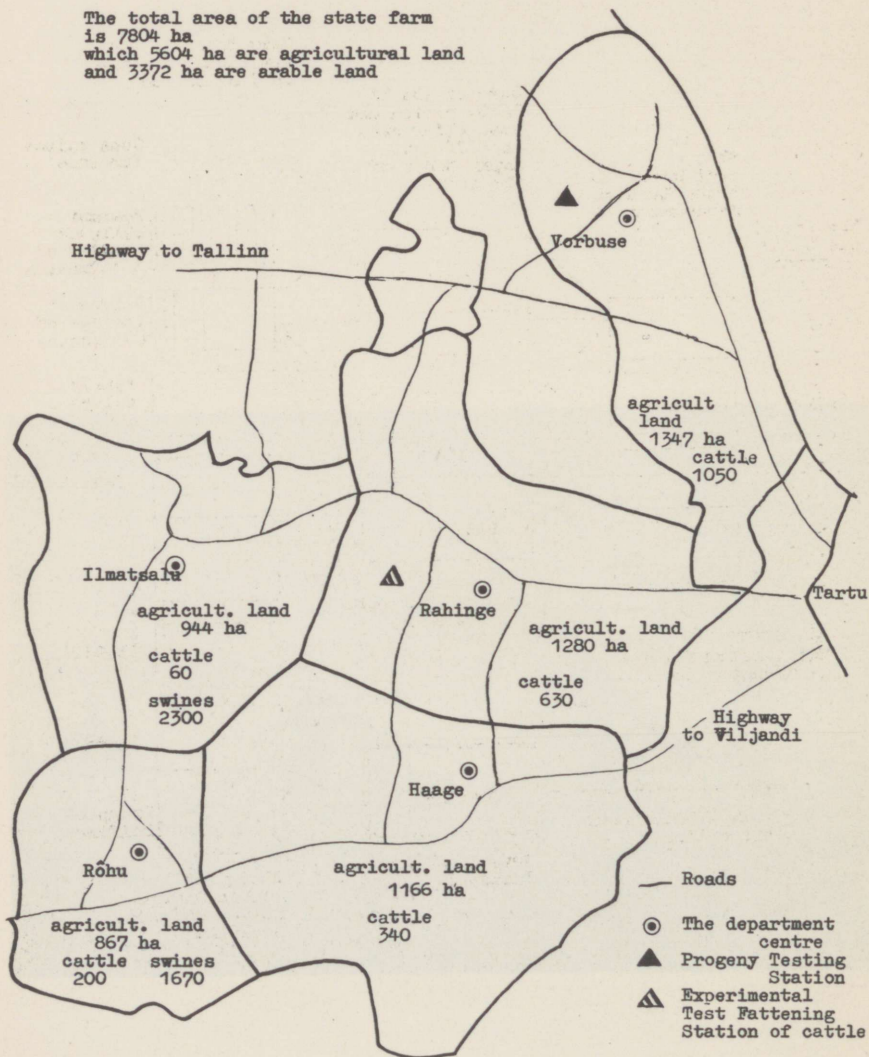
Estonian Red Breed bulls are tested and evaluated in the Vorbuse Progeny Testing Station on the Tartu Model State Farm.

The specialization of cattle breeding is being carried out of the state farm itself which makes it easier to create appropriate management conditions for keeping the experimental animals.

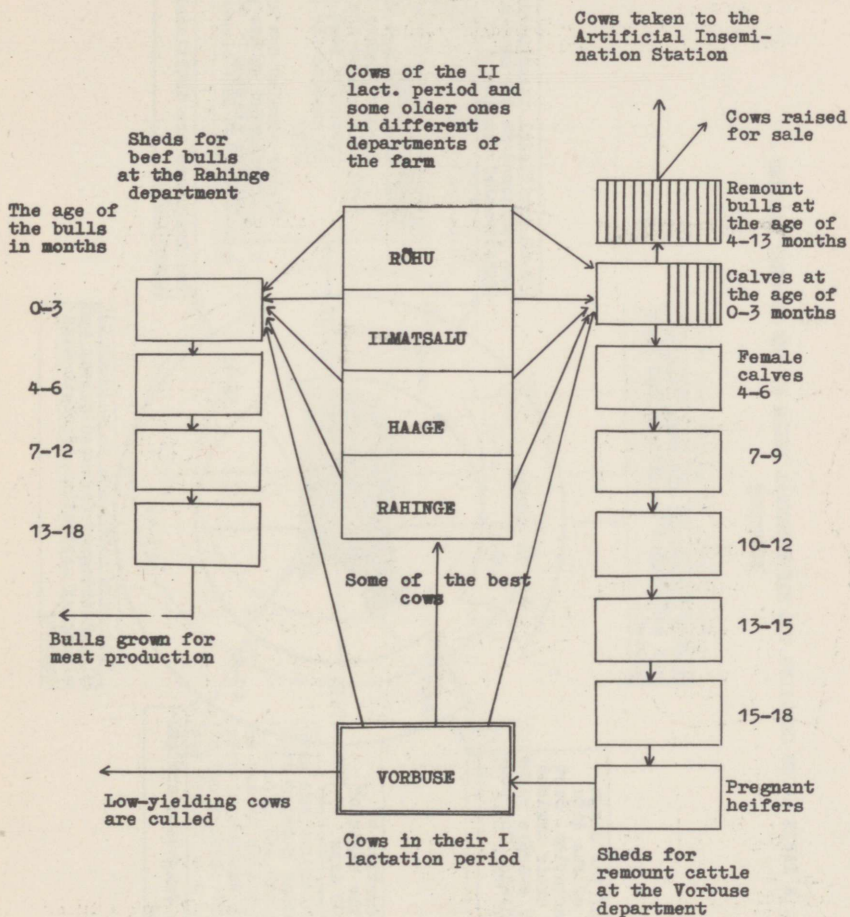


AN OUTLINE OF THE TARTU MODEL STATE FARM

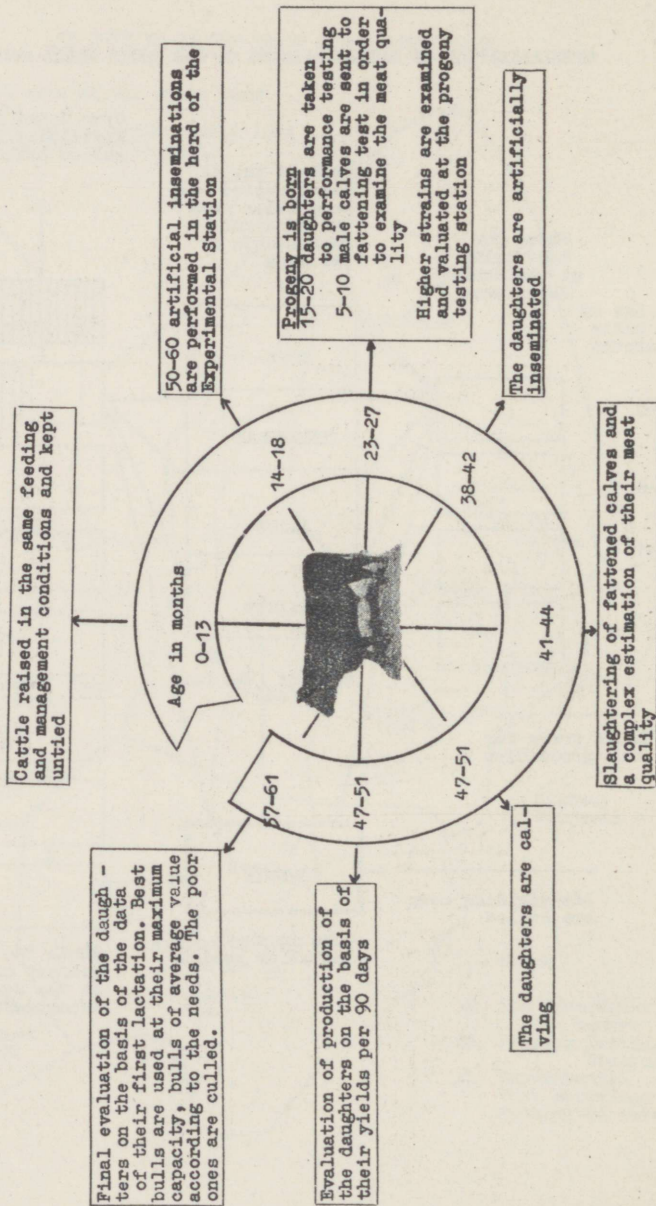
The total area of the state farm
is 7804 ha
which 5604 ha are agricultural land
and 3372 ha are arable land

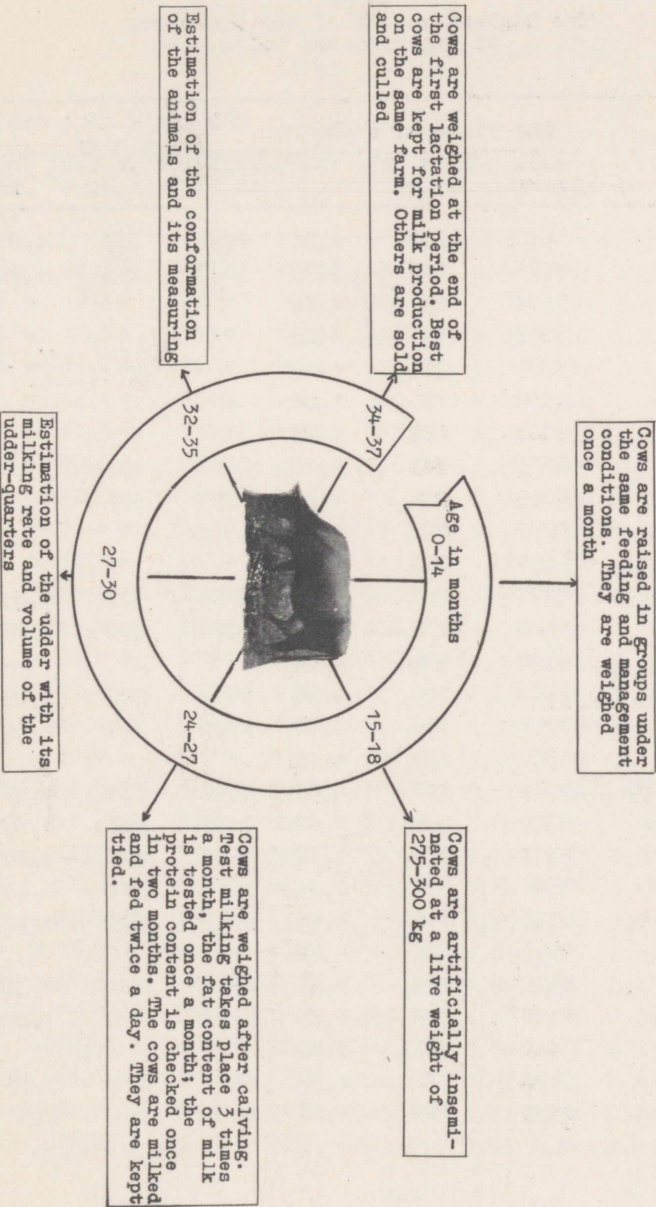


SPECIALIZATION OF CATTLE-RAISING ON THE TARTU MODEL STATE FARM



A TABLE ABOUT CHECKING THE EXPERIMENTAL BULLS AT THE PROGENY TESTING STATIONS





The highest yields of the ancestors
of experimental bulls

Bulls	The yield of a dam			The yield of a dam of a sire		
	milk in kg	milk fat in kg	fat %	milk in kg	milk fat in kg	fat %
Eske 1475	5610	259	4,62	6798	334	4,91
Eike 2441	4975	216	4,34	5610	259	4,62
Ettur 2609	5414	255	4,72	"	"	"
Etaan 2440	4096	175	4,26	"	"	"
Esto 2507	5209	218	4,20	"	"	"
Edu 2443	4539	196	4,22	"	"	"
Eko 2634	6068	288	4,75	"	"	"
Kajus 1478	6673	347	5,20	10055	453	4,50
Kaim 2444	6069	288	4,74	6673	347	5,20
Kaljas 2961	6039	277	4,59	"	"	"
Kabe 2608	6094	266	4,37	"	"	"
Lombjerge 1477	5291	280	5,28	6768	325	4,81
Lomp 2432	5328	235	4,41	5291	280	5,28
Lokk 2431	4598	189	4,11	"	"	"
Vulkan 395	4969	246	4,96	5811	226	3,89
Kahur 2521	4817	197	4,10	4969	246	4,96
Volvo 2426	5507	229	4,16	"	"	"
Kristjan 1078	4977	230	4,63	4695	191	4,06
Tunnel 2433	6799	264	3,89	7137	292	4,10
Tungal 1012	4819	213	4,42	4695	188	4,00
Vimpel 1995	4596	194	4,21	5611	274	4,89
Toor 2672	6485	311	4,79	6541	289	4,42
Torm 2673	7055	347	4,92	"	"	"
Sorts 2605	5571	253	4,55	6542	276	4,22
Hoi 2604	6447	299	4,65	7135	303	4,24
Hopp 2602	6130	331	5,40	"	"	"
Hoiwik 2875	7452	370	4,97	6973	375	5,37
Jold 2873	8349	398	4,77	6835	314	4,59

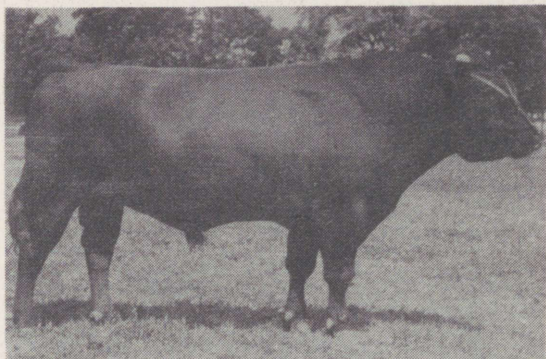
The yields of the I lactation period
of the daughters

Number of the daugh- ters	4% milk		Milk in kg	Milk fat in kg	Fat %	Pro- tein %	Food- units per 1 kg 4% milk days	Length of a lact. in days
	per day in kg	total in kg						
40	13,3	3878	3829	156,4	4,08	3,53	0,94	291
7	15,3	4574	4534	184,0	4,06	3,30	0,74	298
8	12,6	3755	3729	150,9	4,05	3,37	0,86	298
7	11,2	3104	3105	124,1	4,00	3,37	0,86	278
6	12,1	3521	3523	140,8	4,00	3,32	0,84	291
5	11,5	3148	3183	125,0	3,93	3,32	0,83	274
5	10,8	2823	2789	113,8	4,08	3,45	0,92	261
25	12,3	3498	3540	138,8	3,92	3,49	0,88	285
14	11,8	3389	3338	136,9	4,10	3,38	0,82	286
10	12,9	3682	3680	147,3	4,00	3,29	0,84	286
6	12,0	3540	3573	140,7	3,94	3,25	0,87	296
7	13,5	3944	3934	158,0	4,02	3,33	0,95	292
9	11,4	3225	3157	130,8	4,14	3,36	0,86	283
5	11,0	3038	3090	120,1	3,89	3,35	0,85	277
18	12,1	3568	3497	144,6	4,13	3,53	1,01	295
7	10,8	3043	3084	120,6	3,91	3,39	0,87	281
7	10,6	2718	2759	107,0	3,90	3,26	0,90	260
16	13,2	3787	3858	149,6	3,88	3,42	0,94	287
9	12,1	3445	3461	137,4	3,97	3,28	0,84	284
7	12,8	3670	3614	148,0	4,10	3,09	0,98	287
5	11,8	3467	3520	137,0	3,89	3,35	1,03	294
9	13,7	4063	4048	162,9	4,02	3,39	0,86	296
11	13,2	3793	3753	152,8	4,07	3,34	0,83	288
35	13,0	3762	3818	149,3	3,90	3,38	0,84	290
30	12,4	3618	3672	143,3	3,90	3,43	0,85	292
35	13,1	3713	3718	148,4	3,99	3,41	0,83	284
21	12,8	3785	3861	149,4	3,87	3,21	0,87	295
19	11,7	3267	3311	129,5	3,91	3,31	0,81	280

Yields of the I lactation period of the daughters

No. of daughters	Milk in kg	4% milk in kg	Milk fat in kg	Fat %	Protein %	Milk protein in kg	Feed units per 1 kg 4% milk	Live Weight in kg	Length of a lact. in days
505	5408	5538	225	4,16	3,74	202	0,82	503	300
542	4961	5080	206	4,16	3,79	188	0,90	553	300
507	5008	5045	203	4,04	3,71	186	0,78	603	300
1410	4813	4810	192	4,00	3,57	172	0,74	458	296
897	4163	4422	184	4,42	3,63	151	0,71	564	288
911	4070	4355	182	4,47	3,88	158	0,74	547	282
537	4236	4386	180	4,24	4,07	172	1,01	608	300
833	4577	4504	179	3,89	3,43	157	0,82	526	300
561	4624	4485	176	3,80	-	-	0,95	580	300
832	4466	4419	176	3,93	3,29	147	0,84	590	300
516	4133	4283	175	4,24	4,01	166	0,97	486	295
630	4196	4327	175	4,17	3,71	156	0,88	562	300
586	4450	4383	173	3,88	-	-	0,89	505	300
535	4075	4223	173	4,24	3,59	146	0,98	513	300
530	4297	4301	172	4,01	3,64	156	0,96	547	300
583	4392	4395	169	3,85	-	-	0,90	602	280
513	4011	4137	169	4,21	3,40	136	1,00	542	300
560	4044	4135	166	4,10	-	-	0,96	472	296
502	4099	4125	166	4,04	3,88	159	1,00	557	300
570	4019	4053	163	4,04	3,63	146	0,93	480	300
571	3931	3982	156	3,97	-	-	0,96	603	284
618	3828	3923	159	4,16	3,46	132	0,94	496	300
635	3656	3715	150	4,12	4,06	148	0,95	540	290
842	4017	3839	149	3,70	3,03	122	0,80	595	260
500	3542	3638	148	4,18	3,89	138	1,04	550	300
837	3509	3566	144	4,11	3,49	123	0,91	468	300
520	3644	3591	144	3,95	3,79	138	1,08	547	300
509	3356	3491	143	4,27	3,78	127	1,02	513	300
952	3459	3542	143	4,16	3,49	121	0,91	497	300
874	3739	3642	143	3,83	3,35	122	0,83	582	270
534	3338	3434	140	4,19	3,39	113	0,94	522	286
657	3507	3492	139	3,97	3,55	124	0,98	566	300
494	3030	3132	128	4,22	3,92	119	1,14	589	300
508	2921	2965	120	4,10	3,64	106	1,32	523	300
848	2801	2900	119	4,24	3,38	95	0,92	517	277
506	2427	2653	112	4,62	3,78	92	1,33	580	300
1422	2855	2750	107	3,75	3,39	97	0,89	510	286
861	2754	2706	107	3,88	3,50	97	0,97	559	274
545	2337	2480	103	4,41	-	-	0,98	529	246
660	2462	2423	95	3,88	3,44	85	1,07	583	277

* Numbers under the photo of the bull : number of the daughters, lactation, 4% milk per day in kgs, 4% milk in kgs, milk and milk fat production in kgs, fat and protein content per cent, protein production in kgs, number of food units spent on the production of 1 kg of 4% milk, live weight in kgs.



Dam \rightarrow CAT 8325
 The yield of a dam:
 4975-216-4,34

Sire Eske
 \rightarrow CAT 1475
 Yields of the I lactation period of 40 daughters:
 3829-156-4,08
 The yield of a dam of a sire:
 5610-259-4,62

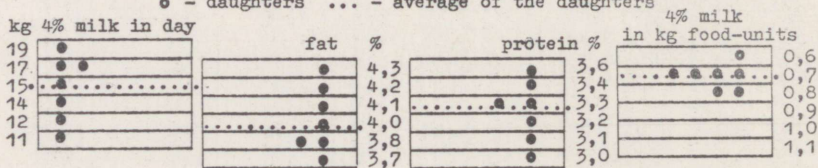
E I K E \rightarrow CAT 2 4 4 1

Born on 21/I 1958

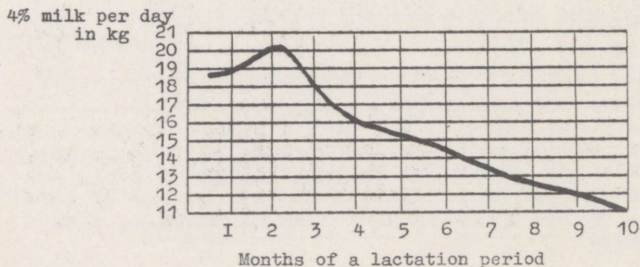
● 7 - I - 15,3 - 4574 - 4534 - 184 - 4,06 -
 - 3,30 - 150 - 0,74 - 511

DIFFERENCES IN A DAILY MILKING AMOUNT, IN FEED CONSUMPTION AND IN THE FAT AND PROTEIN CONTENT OF THE MILK OF THE DAUGHTERS

● - daughters ... - average of the daughters

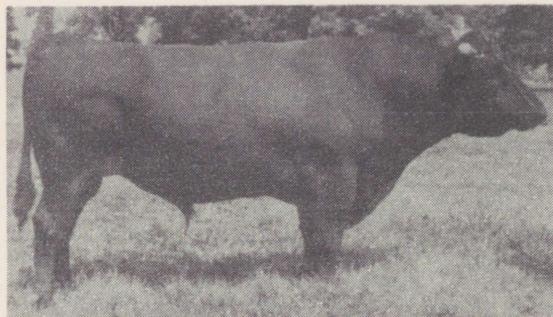


A DIAGRAM OF A LACTATION PERIOD OF DAUGHTERS



Yields of the I lactation period of the daughters

No. of the daughters	Milk in kg	4% milk in kg	Milk fat in kg	Fat %	Pro-tein %	Milk pro-tein in kg	Feed units per 1 kg 4% milk	Live weight in kg	Length of a lact. in days
1168	5495	5773	238	4,34	3,32	182	0,67	554	300
1213	5213	5286	213	4,09	3,21	167	0,70	533	300
1124	5193	5104	202	3,89	3,13	163	0,71	491	300
1200	4120	4300	177	4,29	3,64	150	0,78	538	285
1212	4264	4326	175	4,10	3,45	147	0,80	523	300
923	3988	3828	149	3,73	3,36	134	0,78	491	300
931	3469	3396	134	3,85	3,03	105	0,81	449	300



Dam \rightarrow CAT 5261
 The yield of
 a dam:
 4971-229-4,62

Sire Eske
 \rightarrow CAT 1475
 Yields of the I
 lactation period
 of 40 daughters
 3829-156-4,08
 The yield of a
 dam of a sire:
 5610-259-4,62

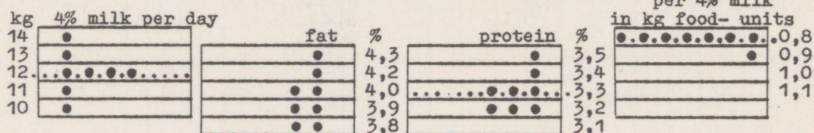
E T T U R \rightarrow CAT 2609

Born on 21/III 1959

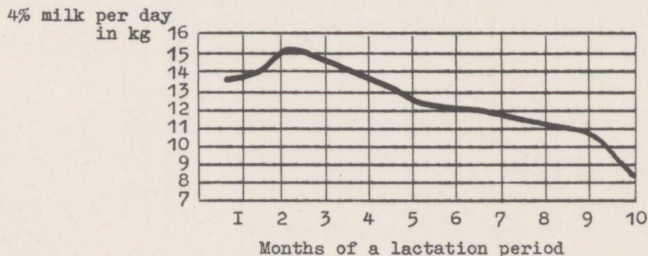
● 8 - I - 12,6 - 3755 - 3729 - 151 - 4,05 -
 - 3,37 - 126 - 0,86 - 494

DIFFERENCES IN A DAILY MILKING AMOUNT, IN FEED CONSUMPTION AND
 IN THE FAT AND PROTEIN CONTENT OF THE MILK OF THE DAUGHTERS

● - daughters ... - average of the daughters



A DIAGRAM OF A LACTATION PERIOD OF DAUGHTERS



Yields of the I lactation period of the daughters

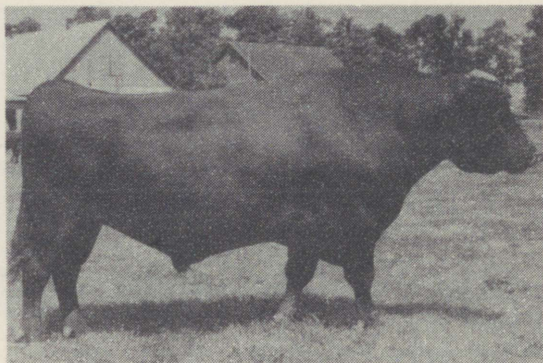
No. of the daughters	Milk in kg	4% milk in kg	Milk fat in kg	Fat %	Pro-tein %	Milk pro-tein in kg	Feed units per 1 kg 4% milk	Live weight in kg	Length of a lact. in days
1315	4424	4456	179	4,05	3,58	158	0,82	536	300
1677	3710	3884	160	4,31	3,39	126	0,83	471	300
1381	3706	3852	158	4,26	3,41	126	0,82	468	289
1379	3837	3864	155	4,05	3,38	130	0,84	460	300
1344	3715	3702	148	3,98	3,26	121	0,89	596	293
1351	3622	3600	143	3,96	3,35	121	0,88	495	300
1370	3586	3528	140	3,89	3,29	118	0,87	461	299
1354	3232	3148	124	3,83	3,21	104	0,94	468	300

Yields of the I lactation period of the daughters

No. of the daughters	Milk in kg	4% milk in kg	Milk fat in kg	Fat %	Pro-tein %	Milk pro-tein in kg	Feed units per 1 kg 4% milk	Live weight in kg	Length of a lact. in days
947	4018	3968	157	3,92	3,33	134	0,80	610	284
1139	3791	3832	154	4,07	3,29	125	0,76	518	293
1232	3488	3476	139	3,98	3,45	120	0,81	514	293
992	3121	3285	136	4,35	3,57	111	0,80	527	288
1219	2599	2543	100	3,92	3,67	95	0,94	503	258
873	2493	2467	98	3,93	3,13	78	1,05	433	277
880	2228	2154	84	3,78	3,03	68	1,02	410	254

Yields of the I lactation of the daughters

No. of the daughters	Milk in kg	4% milk in kg	Milk fat in kg	Fat %	Pro-tein %	Milk pro-tein in kg	Feed units per 1 kg 4% milk	Live weight in kg	Length of a lact. in days
993	5058	5127	207	4,09	3,54	179	0,72	500	300
746	4927	4890	195	3,95	3,64	179	0,78	650	300
621	5169	4954	194	3,76	3,56	184	0,87	535	300
614	4312	4408	179	4,15	3,78	163	0,91	465	300
733	4547	4258	163	3,58	3,38	154	0,89	560	300
856	4020	4020	161	4,00	3,31	133	0,84	463	300
573	3764	3783	152	4,04	4,03	152	1,04	598	300
925	3604	3710	151	4,19	3,70	133	0,79	535	300
745	4054	3876	150	3,71	3,42	139	0,86	565	289
1189	3995	3794	146	3,66	3,33	133	0,79	519	287
948	3514	3582	154	4,13	3,38	119	0,87	593	300
858	3511	3542	142	4,05	3,25	114	0,87	500	300
997	3586	3531	140	3,89	3,52	126	0,77	520	276
1230	3542	3505	139	3,93	3,38	120	0,88	502	285
1190	3216	3374	139	4,33	3,68	118	0,77	500	241
1113	3192	3156	125	3,93	3,45	110	0,87	440	300
991	3001	3041	123	4,08	3,55	107	0,84	561	276
990	3248	3069	118	3,63	3,33	108	0,87	500	300
770	3022	2934	115	3,80	3,48	105	0,94	515	259
729	2817	2785	111	3,92	3,56	100	1,14	620	300
951	2894	2806	110	3,80	3,44	100	0,86	464	264
829	2861	2701	104	3,63	3,45	99	0,93	492	235
1111	2445	2459	99	4,04	3,07	75	0,97	480	263
886	2213	2168	85	3,86	3,05	67	0,98	398	244
619	1993	1932	75	3,77	3,62	72	1,45	572	258



Dam γ CAT 8303
 The yield of
 a dam:
 6068-288-4,75

Sire Kajus
 γ CAT 1478
 Yields of the I
 lactation period
 of 25 daughters:
 3540-139-3,92
 The yield of a
 dam of a sire:
 6673-347-5,20

K A I M γ CAT 2 4 4 4

Born on 27/X 1958

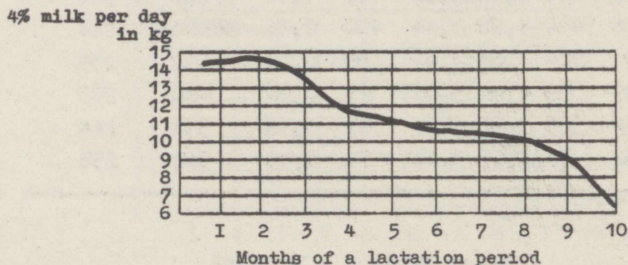
• 14 - I - 11,8 - 3389 - 3338 - 137 - 4,10 - 3,38 -
 - 113 - 0,82 - 473

DIFFERENCES IN A DAILY MILKING AMOUNT, IN FEED CONSUMPTION AND IN
 THE FAT AND PROTEIN CONTENT OF THE MILK OF THE DAUGHTERS

o - daughters ... - average of the daughters



A DIAGRAM OF A LACTATION PERIOD OF DAUGHTERS

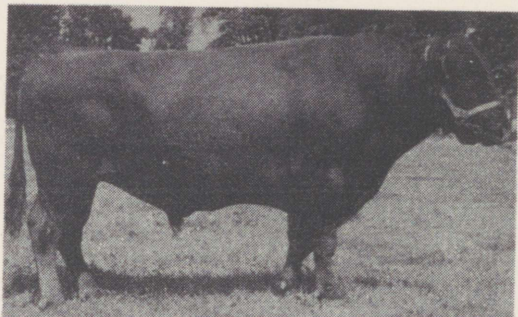


Yields of the I lactation period of the daughters

No. of daughters	Milk in kg	4% milk in kg	Milk fat in kg	Fat %	Pro-tein %	Milk pro-tein in kg	Feed units per 4% milk	Live weight per 1 kg in kg	Length of a lact. in days
1414	4157	4157	166	4,00	3,27	136	0,81	491	300
894	3911	3958	160	4,08	3,40	133	0,74	480	284
1437	3716	3664	145	3,91	3,40	126	0,82	420	300
853	3278	3473	144	4,40	3,23	112	0,84	464	281
932	3663	3601	142	3,88	3,26	120	0,83	489	300
927	3448	3509	142	4,12	3,50	121	0,80	488	295
1234	3120	3341	139	4,47	3,53	110	0,84	536	300
1115	3243	3331	136	4,18	3,30	107	0,83	514	300
1231	3521	3401	133	3,77	3,29	116	0,86	450	287
1205	3233	3237	130	4,00	3,50	114	0,83	413	300
921	2861	3064	128	4,47	3,40	96	0,82	490	276
1191	3058	3044	121	3,96	3,31	101	0,83	478	258
1227	2879	2962	121	4,19	3,37	97	0,86	503	268
899	2641	2706	110	4,17	3,33	88	0,89	440	258

Yields of the I lactation period of the daughters

No. of the daughters	Milk in kg	4% milk in kg	Milk fat in kg	Fat %	Pro-tein %	Milk pro-tein in kg	Feed units per 1 kg 4% milk	Live weight in kg	Length of a lact. in days
1326	4819	4977	203	4,22	3,36	162	0,77	594	300
1259	4746	4526	175	3,69	3,32	158	0,79	400	300
1260	4334	4329	173	3,99	3,31	143	0,76	572	288
1297	4049	3978	157	3,88	3,04	123	0,83	534	300
1314	3500	3583	145	4,16	3,36	118	0,86	469	300
1258	3332	3398	138	4,13	3,42	114	0,86	530	267
1812	3480	3402	134	3,85	3,19	111	0,89	514	297
1382	3029	3201	133	4,38	3,22	103	0,93	460	300
1309	2863	2819	112	3,90	3,28	94	0,93	453	300
1420	2644	2597	103	3,88	3,18	84	0,89	585	212



Dam No. 15
 Stb. 24231
 The yield of
 a dam:
 6447-299-4,65

Sire Hej
 Stb. 4600

Yields of the I
 lactation period
 of 20 daughters:

6250-278-4,44

The yield of a
 dam of a sire:

7135-303-4,24

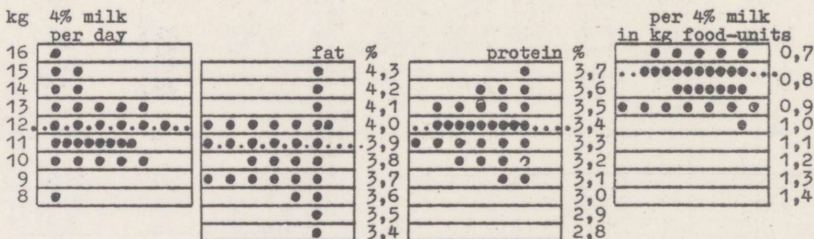
H O I CAT 2 6 0 4

Born on 8/XI 1958

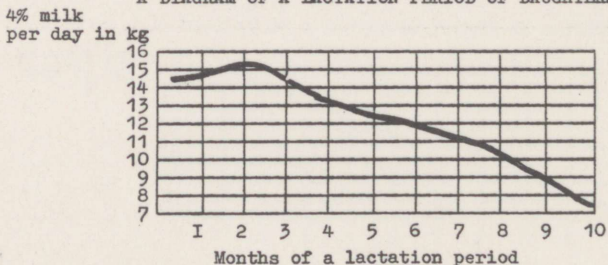
• 30 - I - 12,4 - 3618 - 3672 - 143 - 3,90 -
 - 3,43 - 126 - 0,85 - 509

DIFFERENCES IN A DAILY MILKING AMOUNT, IN FEED CONSUMPTION AND IN
 THE FAT AND PROTEIN CONTENT OF THE MILK OF THE DAUGHTERS

• - daughters ... - average of the daughters



A DIAGRAM OF A LACTATION PERIOD OF DAUGHTERS



Yields of the I lactation period of the daughters

No. of the daughters	Milk in kg	4% milk in kg	Milk fat in kg	Fat %	Pro-tein %	Milk pro-tein %	Feed units per 1 kg 4% milk	Live weight in kg	Length of a lact. in days
1740	4707	4919	202	4,30	3,47	163	0,74	520	300
1798	4558	4735	194	4,26	3,48	159	0,70	583	300
1756	4605	4550	180	3,92	3,21	148	0,78	515	300
1330	4233	4263	171	4,05	3,58	152	0,78	460	300
944	4496	4365	171	3,81	3,36	151	0,78	550	300
1472	4019	4042	162	4,04	3,64	146	0,80	525	300
1454	3998	3944	156	3,91	3,61	144	0,81	546	300
1814	4209	4001	154	3,67	3,30	139	0,85	480	300
1743	3936	3878	154	3,90	3,36	132	0,81	444	300
1436	4018	3886	152	3,78	3,16	127	0,85	464	300
1476	3973	3826	149	3,75	3,18	126	0,85	572	300
2281	4156	3890	148	3,57	3,44	143	0,87	550	300
1755	3737	3661	144	3,86	3,56	133	0,84	441	300
979	3692	3632	144	3,89	3,42	126	0,82	500	286
1809	3576	3576	143	4,00	3,59	128	0,81	519	300
935	3430	3456	139	4,05	3,44	118	0,88	541	293
954	3486	3473	139	3,98	3,54	123	0,90	571	300
942	3313	3371	136	4,12	3,40	113	0,84	462	297
1497	3618	3490	136	3,76	3,64	132	0,94	461	293
1444	3626	3484	136	3,74	3,41	123	0,90	511	300
1500	3575	3460	135	3,78	3,42	122	0,84	568	283
938	3331	3356	135	4,05	3,72	124	0,91	624	295
1471	3341	3352	134	4,02	3,38	113	0,83	506	264
1529	3325	3286	130	3,92	3,33	111	0,89	541	300
1490	3389	3223	124	3,67	3,27	111	0,91	395	296
1757	2977	2958	118	3,96	3,29	98	0,86	512	253
1499	3038	2976	117	3,86	3,24	99	0,79	493	298
978	2730	2730	109	4,00	3,37	92	0,90	426	273
1411	2538	2434	95	3,73	3,45	87	0,98	500	234
937	2559	2350	88	3,45	3,50	89	1,00	440	283

Yields of the I lactation period of the daughters

No. of the daughters	Milk in kg	4% milk in kg	Milk fat in kg	Fat %	Protein %	Milk protein in kg	Feed units per 1 kg 4% milk	Live weight in kg	Length of a lact. in days
1292	4824	5318	226	4,68	3,71	179	0,72	638	300
1246	5390	5176	201	3,73	3,48	188	0,70	564	255
946	4649	4762	193	4,16	3,76	175	0,76	603	288
1440	4743	4783	192	4,06	3,44	163	0,78	591	290
1274	4607	4637	186	4,04	3,63	167	0,80	550	300
1466	4633	4570	181	3,91	3,23	149	0,80	497	288
965	4339	4443	180	4,16	3,23	140	0,74	538	261
1365	4201	4234	170	4,05	3,40	143	0,80	616	300
1415	3990	4080	166	4,15	3,20	128	0,80	456	300
1409	3988	4061	164	4,12	3,33	133	0,80	462	289
1439	4062	4085	164	4,04	3,22	131	0,82	519	299
1558	4512	4223	161	3,57	3,17	143	0,79	537	300
1803	4137	4041	159	3,85	3,30	137	0,80	530	285
1387	3870	3908	157	4,06	3,16	122	0,84	510	300
1248	3875	3908	157	4,06	3,29	127	0,78	400	300
1394	4065	3978	157	3,86	3,51	142	0,84	573	294
1268	3773	3789	152	4,03	3,52	133	0,87	530	300
1763	3570	3612	146	4,08	3,67	131	0,84	481	300
1303	3484	3576	145	4,18	3,72	129	0,89	420	300
1451	3531	3526	141	3,99	3,50	123	0,88	467	300
1474	3463	3431	136	3,94	3,51	121	0,89	494	292
1413	3428	3371	133	3,89	3,27	112	0,91	505	285
1448	3226	3284	133	4,11	3,53	114	0,84	502	285
1304	3217	3253	131	4,08	3,58	115	0,89	490	296
1480	3252	3246	130	3,99	3,57	116	0,90	530	271
1238	3143	3188	129	4,09	3,41	107	0,84	463	246
1452	3081	3085	123	4,01	3,41	105	0,95	471	292
1747	3323	3134	120	3,62	3,08	102	0,91	496	284
1483	3060	2988	118	3,84	3,39	104	0,87	508	282
1445	2979	2956	118	3,95	3,19	95	0,82	469	245
1464	2651	2699	109	4,12	3,35	89	0,88	537	245
1393	2902	2790	109	3,74	3,14	91	0,89	532	244
1417	2905	2737	105	3,61	3,33	97	0,95	561	240
1361	2857	2695	103	3,62	3,36	96	0,93	571	231
1475	2401	2420	97	4,05	3,52	85	0,99	432	267

Yields of the I lactation period of the daughters

No. of the daughters	Milk in kg	4% milk in kg	Milk fat in kg	Fat %	Pro-tein %	Milk pro-tein in kg	Feed units per 1 kg 4% milk	Live weight in kg	Length of a lact. in days
1242	5183	5267	213	4,11	3,69	191	0,70	567	286
1342	4930	5049	205	4,16	3,27	161	0,76	496	300
1266	4850	4859	195	4,01	3,28	159	0,75	493	300
1741	4858	4709	184	3,80	3,23	157	0,77	526	300
1375	4266	4444	183	4,28	3,12	133	0,79	440	300
1255	4597	4524	179	3,89	3,09	142	0,76	485	300
1753	4562	4465	176	3,86	3,08	141	0,79	563	300
1491	4170	4263	173	4,15	3,40	142	0,73	489	300
1291	4456	4317	169	3,79	3,44	153	0,82	607	300
1261	4030	4134	168	4,17	3,34	135	0,81	490	300
1240	4102	4077	162	3,96	3,40	139	0,83	515	288
1357	4373	4161	161	3,68	3,40	149	0,85	553	300
1302	4000	4011	161	4,02	3,64	146	0,85	570	300
1257	4351	4149	161	3,69	3,43	149	0,84	560	300
1485	4269	4085	158	3,71	3,33	142	0,70	450	285
1332	3955	3919	156	3,94	3,45	136	0,86	558	300
1336	3863	3879	156	4,03	3,38	130	0,85	538	300
1236	3850	3837	153	3,98	3,35	129	0,84	510	300
1249	4110	3872	148	3,61	3,22	132	0,84	436	300
1477	3776	3582	145	3,80	3,46	131	0,89	512	300
1241	3191	3424	143	4,49	3,72	119	0,86	476	300
1325	3058	3340	141	4,61	3,61	110	0,86	554	286
1463	3631	3508	137	3,77	3,44	125	0,84	521	300
988	3547	3382	131	3,70	3,26	116	0,85	523	272
1815	3349	3288	130	3,88	3,53	118	0,91	524	258
939	3298	3206	126	3,81	3,38	111	0,89	493	298
1465	3142	3142	126	4,00	3,21	101	0,90	563	265
1329	3068	3107	125	4,08	3,47	107	0,87	429	274
2107	3345	3168	122	3,65	3,37	113	0,89	553	300
1758	3177	3090	121	3,82	3,43	109	1,00	552	300
1253	3018	2970	117	3,89	3,48	105	0,90	660	277
1450	3283	3050	116	3,53	3,37	111	0,85	578	297
950	3309	3023	113	3,42	3,32	110	0,90	471	262
1492	2741	2649	103	3,78	3,35	92	0,90	511	280
1237	1923	1810	69	3,61	3,45	66	1,00	498	207

Yields of the I lactation period of the daughters

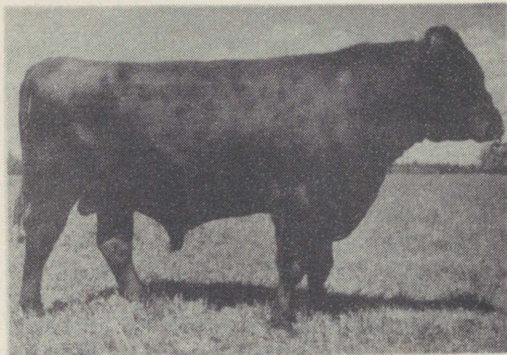
No. of the daughters	Milk in kg	4% milk in kg	Milk fat in kg	Fat %	Pro-tein %	Milk pro-tein in kg	Feed units per 1 kg 4% milk	Live weight in kg	Length of a lact. in days
1616	5385	5249	206	3,83	3,05	164	0,69	483	300
1811	4749	4843	196	4,13	3,27	155	0,68	447	300
1537	4650	4453	173	3,72	3,22	150	0,72	584	300
1570	4711	4449	171	3,63	3,16	149	0,70	493	300
1646	4543	4345	168	3,71	3,07	140	0,68	449	300
1581	4510	4322	168	3,72	3,10	140	0,70	440	300
1542	4349	4249	167	3,80	3,20	139	0,74	502	300
1636	4171	4127	164	3,92	3,29	138	0,71	487	300
1731	4043	4062	163	4,03	3,29	133	0,77	587	300
1644	3599	3763	155	4,30	3,13	113	0,77	514	291
1593	3849	3822	152	3,95	3,33	128	0,80	498	299
1588	3699	3676	146	3,96	3,41	126	0,83	546	300
1572	3930	3654	139	3,53	2,99	118	0,85	523	300
1631	3444	3341	131	3,80	3,17	109	0,85	514	300
1495	3237	3230	129	3,99	3,57	115	0,88	521	300
1590	3273	3154	123	3,76	3,12	102	0,86	511	289
1530	3238	3118	121	3,75	3,22	104	0,85	492	265
1654	3258	3111	120	3,70	3,18	104	0,83	441	300
1565	2670	2826	117	4,39	3,53	94	0,82	573	284
1580	3138	2980	115	3,66	3,07	96	0,90	511	287
1770	2636	2731	112	4,20	3,36	89	0,90	553	287

Yields of the I lactation period of the daughters

No. of the daughters	Milk in kg	4% milk in kg	Milk fat in kg	Fat %	Pro-tein %	Milk pro-tein in kg	Feed units per 1 kg 4% milk	Live weight in kg	Length of a lact. in days
1634	5135	5222	211	4,11	3,46	178	0,66	441	300
1650	5112	5003	197	3,86	3,01	154	0,66	535	300
1532	4197	4220	169	4,04	3,43	144	0,80	558	300
1594	4554	4248	162	3,50	3,10	141	0,70	456	297
1683	3763	3610	140	3,73	3,23	121	0,77	460	300
1705	3347	3392	140	4,10	3,32	111	0,80	496	294
1621	3336	3326	133	3,90	3,32	111	0,84	613	300
1544	3367	3333	132	3,93	3,45	116	0,85	465	300
1801	3384	3310	130	3,85	3,29	111	0,86	518	282
1543	2790	2925	121	4,30	3,50	97	0,93	508	292
1637	2860	2931	119	4,10	3,48	99	0,86	564	300
1635	2685	2744	111	4,15	3,46	93	0,94	503	300
1613	2646	2686	108	4,10	3,26	86	0,81	475	256
1642	2700	2662	105	3,91	3,29	89	0,67	580	205
1551	2727	2663	105	3,84	3,28	89	0,95	528	286
1657	2641	2511	97	3,67	3,30	87	0,83	480	231
1561	2429	2413	96	3,96	3,21	78	0,95	594	271
1555	2416	2358	93	3,84	3,67	89	0,87	480	277
1687	2547	2388	91	3,58	3,40	86	0,80	603	222

Yields of the I lactation period of the daughters

No. of the daughters	Milk in kg	4% milk in kg	Milk fat in kg	Fat %	Pro-tein %	Milk pro-tein in kg	Feed units per 1 kg 4% milk	Live weight in kg	Length of a lact. in days
1316	4416	4648	192	4,35	3,49	154	0,75	489	300
1306	4539	4519	180	3,97	3,45	156	0,79	529	300
1373	4299	4322	173	4,04	3,38	145	0,81	494	300
1295	3946	4079	167	4,22	3,54	139	0,81	523	300
1368	3635	3692	149	4,10	3,29	120	0,78	523	258
1331	3550	3643	148	4,17	3,53	125	0,80	453	269
1271	3525	3626	148	4,19	3,23	114	0,85	475	300
1346	3764	3658	143	3,81	3,10	117	0,88	532	300
1353	3468	3400	134	3,87	3,08	107	0,90	501	300
1290	2949	3053	125	4,24	3,33	98	0,87	470	242
1360	3193	3094	121	3,79	3,18	101	0,94	622	298



Dam No. 91
 Stb. 24813
 The Yield of
 a dam:
 6485-311-4,79

Sire Skive Thor
 Stb. 4679
 Yields of the I
 lactation period
 of 18 daughters:
 5426-289-4,42
 The yield of a
 dam of sire:
 6541-289-4,42

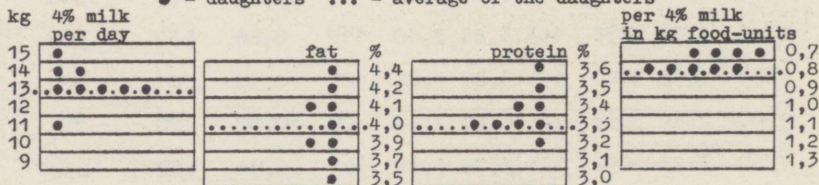
T O O R CAT 2 6 7 2

Born on 15/II 1959

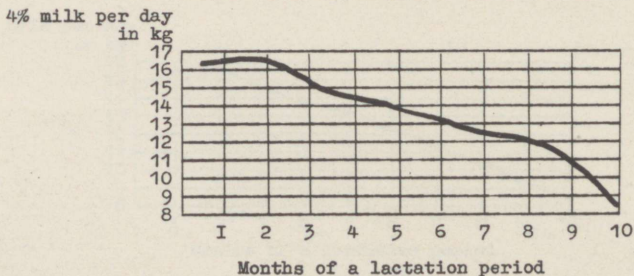
● 9 - I - 13,7 - 4063 - 4048 - 163 - 4,02 -
 - 3,39 - 137 - 0,80 - 500

DIFFERENCES IN A DAILY MILKING AMOUNT, IN FEED CONSUMPTION AND
 IN THE FAT AND PROTEIN CONTENT OF THE MILK OF THE DAUGHTERS

● - daughters ... - average of the daughters



A DIAGRAM OF A LACTATION PERIOD OF DAUGHTERS

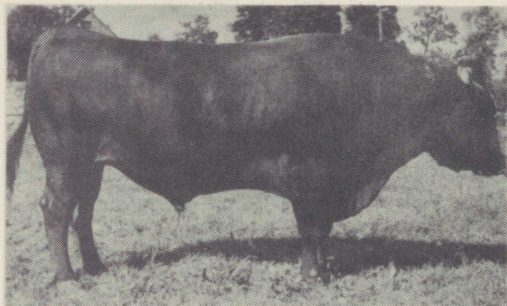


Yields of the I lactation period of the daughters

No. of daughters	Milk in kg	4% milk in kg	Milk fat in kg	Fat %	Protein %	Milk protein in kg	Food units per 1 kg 4% milk	Live weight in kg	Length of a lact. in days
1327	4433	4499	182	4,10	3,42	152	0,72	522	300
1669	4507	4480	178	3,96	3,51	158	0,78	473	300
1356	4317	4364	176	4,07	3,39	146	0,79	463	300
1341	4082	4171	169	4,15	3,63	148	0,79	524	300
1363	3683	3950	165	4,48	3,31	122	0,84	520	300
1276	4313	4178	163	3,79	3,20	138	0,81	466	300
1350	3816	3791	151	3,96	3,31	126	0,81	539	287
1307	3975	3729	143	3,59	3,43	136	0,81	508	275
1288	3314	3415	139	4,20	3,33	110	0,88	110	300

Yields of the I lactation period of the daughters

No. of the daughters	Milk in kg	4% milk in kg	Milk fat in kg	Fat %	Pro-tein %	Milk pro-tein in kg	Feed units per 1 kg 4% milk	Live weight in kg	Length of a lact. in days
797	4855	4858	194	4,00	3,39	165	0,78	610	283
497	4092	4457	188	4,59	3,85	158	0,92	500	300
521	4386	4554	187	4,25	3,54	155	0,93	610	300
501	3988	4086	166	4,16	3,59	143	0,98	619	300
792	4226	4069	159	3,75	3,47	147	0,84	500	282
783	4370	4077	155	3,55	3,14	137	0,85	480	300
789	3437	3673	153	4,46	3,39	117	0,90	578	300
499	3479	3693	153	4,41	4,22	147	1,03	590	300
485	3665	3741	152	4,15	3,46	127	1,02	626	300
498	3602	3697	150	4,17	3,54	127	1,02	584	300
527	3418	3395	135	3,95	3,32	113	1,14	580	300
517	2759	2937	122	4,43	4,04	111	1,22	571	300
495	2580	2844	122	4,70	3,54	91	1,17	649	277
526	2976	2980	119	4,01	3,72	111	1,25	516	300
503	2748	2858	117	4,27	3,71	102	1,18	521	284
524	2748	2824	115	4,18	3,10	84	1,40	500	300
884	2868	2839	113	3,93	3,15	90	0,94	495	300
929	2740	2613	101	3,69	3,39	93	0,90	483	276



Dam Meelis 313

The yield of
a dam:

4817-197-4,10

Sire Vulkan
}CAT 395

Yields of the I
lactation period
of 18 daughters:

3497-145-4,13

The yield of a
dam of a sire:

4969-246-4,96

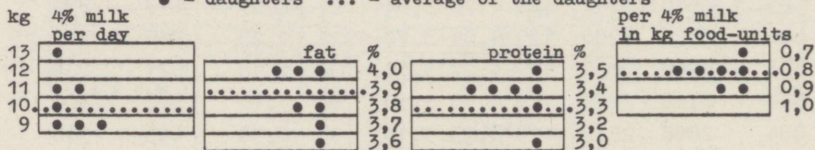
K A H U R }CAT 2521

Born on 21/III 1958

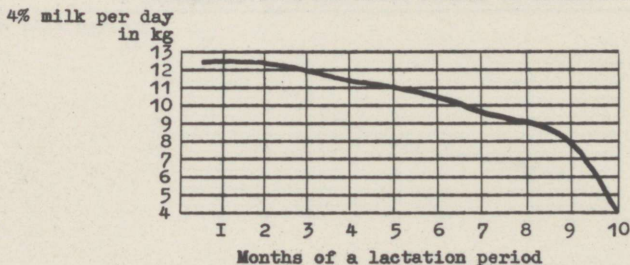
● 7 - I - 10,8 - 3043 - 3084 - 121 - 3,91 -
- 3,39 - 105 - 0,87 - 469

DIFFERENCES IN A DAILY MILKING AMOUNT, IN FEED CONSUMPTION AND
IN THE FAT AND PROTEIN CONTENT OF THE MILK OF THE DAUGHTERS

● - daughters ... - average of the daughters

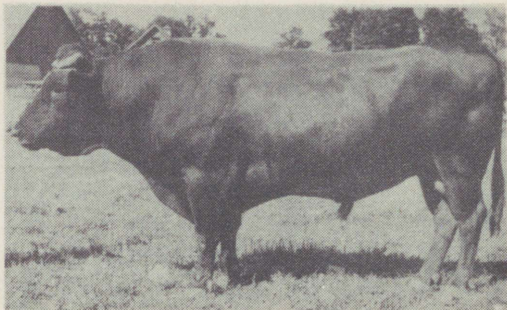


A DIAGRAM OF A LACTATION PERIOD OF DAUGHTERS



Yields of the I lactation period of the daughters

No. of the daughters	Milk in kg	4% milk in kg	Milk fat in kg	Fat %	Pro-tein %	Milk pro-tein in kg	Feed units per 1 kg 4% milk	Live weight in kg	Length of a lact. in days
1201	4152	4173	167	4,03	3,40	141	0,79	469	300
1207	3298	3235	128	3,87	3,49	115	0,89	508	300
1199	3066	3074	123	4,02	3,53	108	0,83	545	280
1197	3028	3043	122	4,03	3,35	101	0,85	498	267
1215	2790	2730	108	3,86	3,43	96	0,89	437	281
1216	2757	2665	104	3,78	3,42	94	0,93	414	270
879	2496	2380	92	3,69	3,08	77	0,99	409	271



Dam ♀CAT 9693
 The yield of a dam:
 5507-229-4,16

Sire Vulkan
 ♀CAT 395
 Yields of the I lactation period of 18 daughters:
 3497-145-4,13
 The yield of a dam of a sire:
 4949-246-4,96

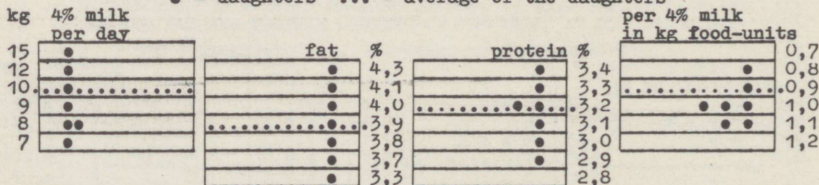
V O L V O ♀CAT 2426

Born on 21/IV 1958

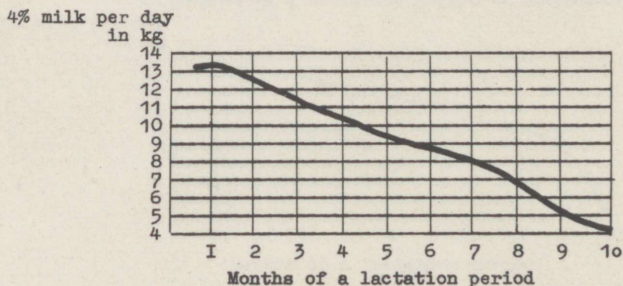
● 7 - I -10,6 - 2718 - 2759 - 107 - 3,90 -
 - 3,26 - 90 - 0,90 - 465

DIFFERENCES IN A DAILY MILKING AMOUNT, IN FEED CONSUMPTION AND IN THE FAT AND PROTEIN CONTENT OF THE MILK OF THE DAUGHTERS

● - daughters ... - average of the daughters



A DIAGRAM OF A LACTATION PERIOD OF DAUGHTERS



Yields of the I lactation period of the daughters

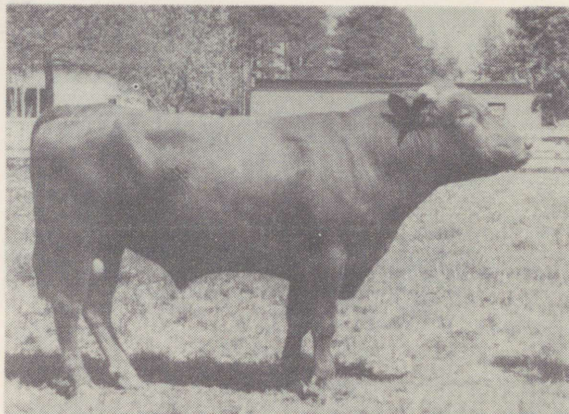
No. of the daughters	Milk in kg	4% milk in kg	Milk fat in kg	Fat %	Protein %	Milk protein in kg	Feed units per 1 kg 4% milk	Live weight in kg	Length of a lact. in days
2125	4758	4576	178	3,75	3,32	158	0,76	496	300
2137	3764	3781	151	4,03	3,29	124	0,81	483	300
1117	2871	3034	126	4,38	3,43	99	0,93	482	300
1135	2764	2474	91	3,31	3,02	83	0,93	450	264
890	1907	1864	73	3,85	2,96	56	1,00	460	228
1179	1676	1707	69	4,12	3,15	53	0,94	463	202
903	1578	1576	63	3,99	3,26	51	1,07	442	225

Yields of the I lactation period of the daughters

No. of the daughters	Milk in kg	4% milk in kg	Milk fat in kg	Fat %	Pro-tein %	Milk pro-tein in kg	Feed units per 1 kg 4% milk	Live weight in kg	Length of a lact. in days
1214	3533	3867	164	4,63	3,78	133	0,84	464	300
1144	4133	4091	162	3,93	3,39	140	0,78	520	300
912	4149	4075	161	3,88	2,99	124	0,76	460	300
1209	3536	3780	158	4,46	3,22	114	0,78	590	259
882	4082	3876	150	3,66	3,21	131	0,76	450	300
1210	3876	3629	139	3,58	3,32	129	0,84	475	300
871	2753	2759	110	4,01	3,28	90	0,99	418	300
872	2768	2640	102	3,69	3,19	88	0,99	480	274
905	2318	2304	92	3,96	3,11	72	0,93	472	219

Yields of the I lactation period of the daughters

No. of the daughters	Milk in kg	4% milk in kg	Milk fat in kg	Fat %	Pro-tein %	Milk pro-tein in kg	Feed units per 1 kg 4% milk	Live weight in kg	Length of a lact. in days
528	4977	4983	199	4,00	3,10	154	0,90	625	300
589	4598	4691	190	4,14	-	-	0,88	520	300
512	4702	4696	188	3,99	3,55	167	0,94	548	300
539	3727	3763	151	4,06	3,37	126	1,08	547	300
493	3502	3590	146	4,16	2,64	92	1,07	484	300
852	3484	3319	128	3,50	2,29	115	0,89	535	300
572	2548	2539	101	3,97	-	-	0,94	612	244



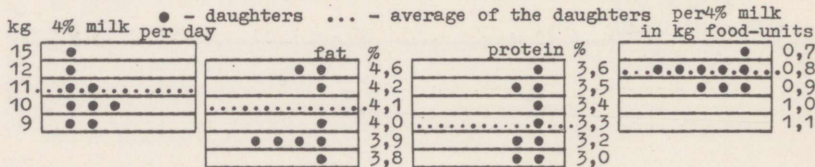
Dam ↘CAT 7167
 The yield of
 a dam:
 5328-235-4,41

Sire Lombjerge
 ↘CAT 1477
 Yields of the I
 lactation period
 of 7 daughters:
 3934-158-4,02
 The yield of a
 dam of a sire:
 5291-280-5,28

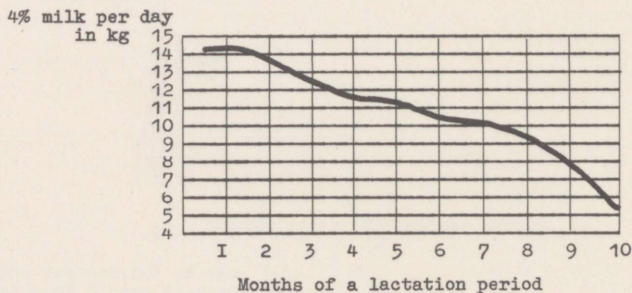
L O M P ↘CAT 2 4 3 2
 Born 20/V 1958

● 9 - I - 11,4 - 3225 - 3157 - 131 - 4,14 -
 - 3,36 - 106 - 0,86 - 461

DIFFERENCES IN A DAILY MILKING AMOUNT, IN FEED CONSUMPTION AND
 IN THE FAT AND PROTEIN CONTENT OF THE MILK OF THE DAUGHTERS



A DIAGRAM OF A LACTATION PERIOD OF DAUGHTERS



Yields of the I lactation period of the daughters

No. of the daughters	Milk in kg	4% milk in kg	Milk fat in kg	Fat %	Pro-tein %	Milk pro-tein in kg	Feed units per 1 kg 4% milk	Live weight in kg	Length of a lact. in days
1151	4274	4717	200	4,69	3,59	154	0,78	610	300
910	3521	3466	137	3,89	3,01	106	0,79	428	300
1184	3461	3439	137	3,96	3,54	122	0,82	493	288
914	3277	3286	132	4,02	3,09	101	0,85	410	300
867	3346	3298	131	3,91	3,24	107	0,86	450	272
878	2640	2888	122	4,63	3,68	97	0,97	420	300
901	2784	2767	110	3,96	3,46	96	0,85	430	257
887	2490	2568	105	4,21	3,26	81	0,96	450	280
1217	2617	2592	103	3,94	3,39	89	0,90	480	248

Yields of the I lactation period of the daughters

No. of the daughters	Milk in kg	4% milk in kg	Milk fat in kg	Fat %	Pro-tein %	Milk pro-tein in kg	Feed units per 1 kg 4% milk	Live weight in kg	Length of a lact. in days
633	4822	4838	194	4,02	3,71	179	0,85	557	300
538	4626	4628	185	4,00	3,30	153	0,91	512	297
845	4785	4652	282	3,81	3,29	158	0,77	516	300
788	3881	3991	163	4,19	3,51	136	0,88	550	300
794	4453	4217	162	3,63	3,08	137	0,86	495	300
634	4372	4123	160	3,66	3,41	149	0,92	489	300
655	4049	3900	152	3,76	3,04	123	0,89	575	264
617	3968	3838	150	3,78	3,67	146	0,98	592	300
668	4045	3787	145	3,58	3,51	142	0,91	620	278
665	3592	3472	136	3,78	3,47	125	0,93	498	291
700	3365	3383	135	3,99	3,27	110	0,95	516	277
519	3295	3323	134	4,06	3,42	113	1,16	528	291
1109	3318	3273	130	3,90	3,32	110	0,81	509	267
728	3235	3184	126	3,89	3,45	112	0,82	524	222
523	2997	3045	124	4,13	3,76	113	1,23	524	300
636	2910	2883	115	3,94	3,70	108	1,14	558	300

Live weight, gains and fodder consumption of
the female calves

Bulls	Number of daughters	Age in months	Birth weight in kg	Live weight in kg	The gain per 24 hours in g	Feed units per 1 kg of live weight gain
Soliid 3252	12	12	30	261	633	5,7
Holt 3192	13	12	30	260	630	5,7
Soosik 3230	10	12	31	260	627	5,7
Leif 3194	15	12	30	256	619	5,7
Karst 3000	11	12	31	252	605	5,8
Hopak 3185	17	12	31	252	605	5,8
Sôlm 3193	17	12	30	249	600	6,0
Kalle 3186	20	12	28	240	581	5,9
Hort 3092	20	12	32	239	567	5,8
Naer 3094	21	12	32	237	562	6,3
Naat 3093	27	12	32	236	559	6,2
Hoop 3353	12	6	30	147	650	3,8
Harpuun 3348	14	6	30	147	650	4,0
Hommik 3354	14	6	30	145	639	4,1
Malm 3191	10	6	29	142	628	3,8
Harti 3349	15	6	30	142	628	4,0
Hoimu 3350	18	6	33	144	617	4,4
Soolo 3187	16	6	30	140	611	3,9
Joovik 3347	11	6	30	139	605	4,2
Svamm 3354	14	6	29	137	600	4,3
Jonni 3346	16	6	31	139	600	4,3
Souki 3585	14	6	31	139	600	4,2

Live weight, gains and fodder consumption of the
remount bulls

Bulls	Number of sons	Age in months	Birth weight in kg	Live weight in kg	The gain per 24 hours in g	Feed units per 1 kg of live weight gain
Soliid 3252	2	12	37	387	959	4,9
Hoke 3189	3	12	31	372	934	5,2
Karus 2961	3	12	43	376	912	5,0
Eero 2868	2	12	33	355	882	5,2
Kazbek 3188	3	12	33	359	893	5,6
Sôlm 3193	4	12	36	362	893	5,5
Naat 3093	3	12	37	362	890	5,7
Soots 3352	2	12	31	340	847	5,4
Naer 3094	4	12	40	348	843	5,9
Kajak 2974	2	12	35	310	753	6,0
Kalle 3186	2	6	38	201	905	3,7
Holla 2931	3	6	36	199	905	4,2
Hoidik 3549	2	6	32	187	861	4,2
Jonni 3346	3	6	31	182	838	4,4
Souki 3585	4	6	37	180	794	4,8
Harpuun 3348	2	6	29	167	767	5,0
Svamm 3351	2	6	31	168	761	5,0
Soolo 3187	4	6	33	156	683	5,0

RATIONS FOR THE REMOUNT COWS

Age	Per day										
in months	whole milk in the morning	skim milk in the evening	in the morning	in the evening	concentrates in kg	hay in kg	root crops in kg	silage in kg	com-mon meal in kg	bone-meal in kg	cod-liver oil in g
Calves are given beestings in their 3 first days of life according to their needs											
1	2	2	-	-	-	-	-	-	-	-	-
2	3	3	-	-	-	-	-	-	-	-	-
3	4	4	-	-	0,04	0,05	-	-	5	-	-
4	4	4	-	-	-	-	-	-	-	-	-
2	5	4	-	5	0,3	0,5	-	-	10	10	10
3	6	4	-	5	-	-	-	-	-	-	-
4	7	3	-	5	-	-	-	-	-	-	-
5	8	3	-	5	-	-	-	-	-	-	-
9-13	-	-	4	5	1	1	1	1	10	10	10
14-17	-	-	-	5	2,0	2,5	1,0	2,0	15	15	15
18-21	-	-	-	5	2,0	2,5	1,0	3,0	15	15	15
22-26	-	-	-	5	2,0	2,5	1,0	4,0	15	15	15
Total (in kg)	280	905		220	270	120	300	2	3,5	2	
7-9	-	-	-	3	2	4	3	4	40	50	-
10-12	-	-	-	3	2	4	3	5	50	60	-
13-15	-	-	-	2,5	5	5	3	6	60	70	-
16-18	-	-	-	2,5	5	3	8	60	70	-	-

RATIONS FOR THE FEMALE CALVES

Age in months	Per day										
	in whole milk in the morning	in the evening	in the morning	skim milk in the evening	in the morning	concentrates in kg	hay in kg	root crops in kg	silage in kg	com-mon meal salt in g	bone-meal liver oil in g
1	3	3	-	-	-	-	-	-	-	-	-
2	3	3	-	-	-	-	-	-	-	-	-
3	3	-	-	3	0,04	0,05	-	-	-	5	10
4	3	-	-	3	3	-	-	-	-	-	-
5	3	-	-	3	-	-	-	-	-	-	-
6	3	-	-	3	-	-	-	-	-	-	-
7	-	-	3	3	0,3	0,5	-	-	10	10	10
8	-	-	3	3	3	-	-	-	-	-	-
3 9-13	-	-	3	3	0,8	1,0	1,0	1,0	1,0	10	15
4 14-17	-	-	-	3	1,0	2,5	1,0	2,0	1,0	15	30
5 18-21	-	-	-	3	1,0	2,5	1,0	3,0	1,0	15	30
6 22-26	-	-	-	3	1,0	2,5	1,0	4,0	1,0	15	30
Total (in kg)	154	669	125	270	120	300	2	3,5	0,75		

Calves are given beestings in their 3 first days of life according to their needs 4-5 times a day

RATIONS FOR A YOUNG COW CATTLE

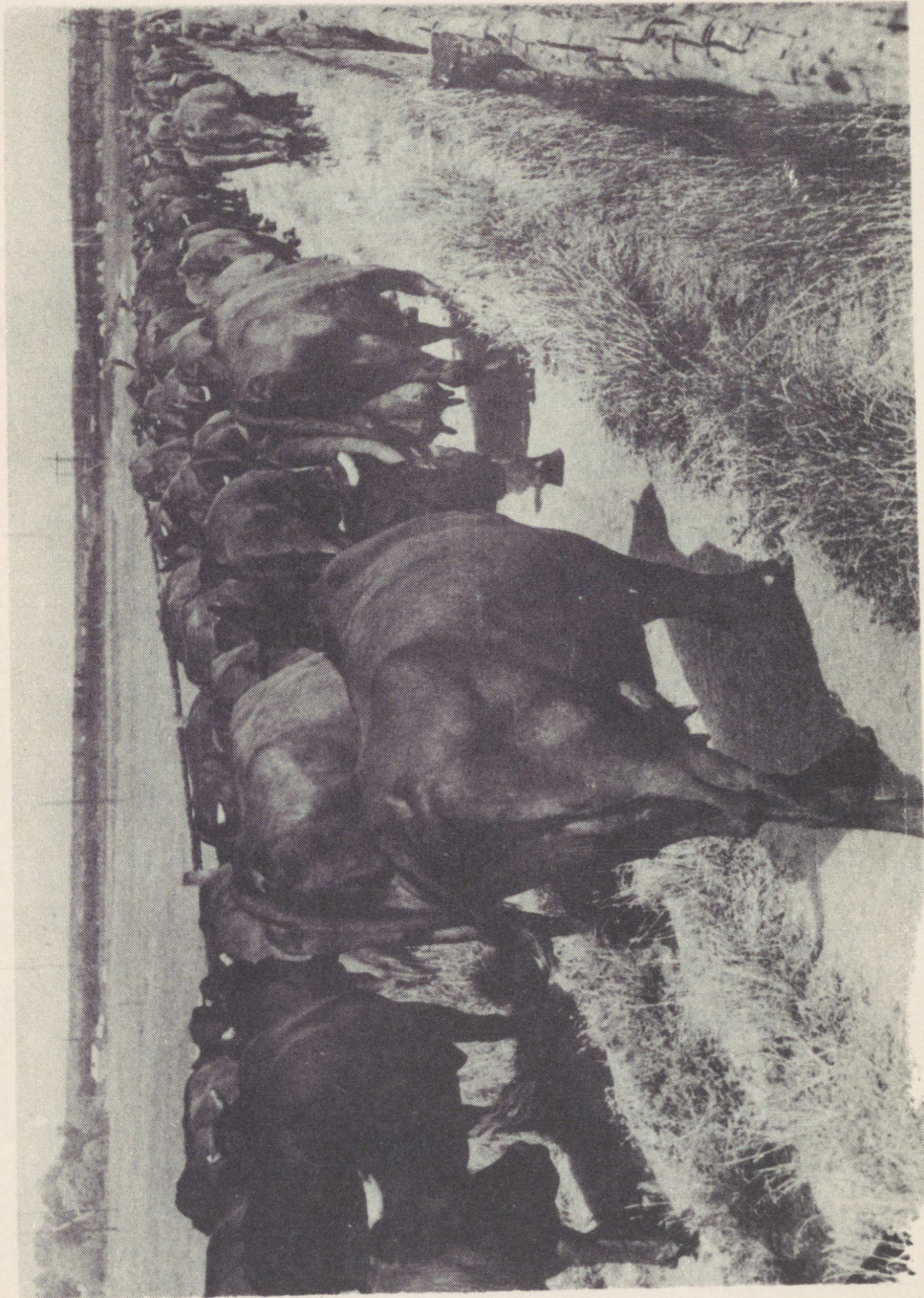
Age in months	Per day							food-units per ration
	concentrates in kg	hay in kg	fodder straw in kg	hybrid- rape in kg	silage in kg	common salt in g	bone-meal in g	
7-9	1	2	2	-	6	30	40	3,4
10-12	1	2	2	-	8	30	40	3,7
13-15	1	2	2	-	10	40	60	4,0
16-18	1	2	2	-	12	50	60	4,3

Rations for the pregnant heifers

Months of pregnancy	concentrates in kg	hay in kg	fodder straw in kg	hybrid- rape in kg	silage in kg	common salt in g	bone-meal in g	food-units per ration
1-3	1	2	2	-	14	50	60	4,5
4-6	1	2	2	-	16	60	80	4,8
7	1	2	2	-	18	60	80	5,1
8	1,6	3	-	10	20	60	80	6,2
9	2	3	-	15	25	60	80	7,6

RATIONS FOR THE EXPERIMENTAL BULLS

4% milk per day in kg	Per day										Concentrates in g/food units per 1 kg 4% milk	
	hay		silage		hybrid-rape		semi sugar beet		concentrates			com- mon salt in K
	food units	in kg	food units	in kg	food units	in kg	food units	in kg	food units	in kg		
5,1-6,0	1,5	2,5	1,5	15	-	-	-	-	1,6	1,7	50	272
6,1-7,0	1,5	2,5	1,5	15	-	-	-	-	2,5	2,6	50	272
7,1-8,0	1,5	2,5	1,5	15	-	-	-	-	2,9	3,0	55	272
8,1-9,0	1,5	2,5	1,5	15	-	-	-	-	3,1	3,2	55	272
9,0-10,0	1,5	2,5	1,5	15	-	0	-	-	3,4	3,5	65	276
10,1-11,0	1,5	2,5	1,5	15	1,0	1,0	7	7	3,5	3,7	65	276
11,1-12,0	1,5	2,5	1,5	15	1,0	1,0	7	7	4,0	4,2	70	276
12,1-13,0	1,5	2,5	1,5	15	1,0	1,0	7	7	4,4	4,6	80	276
13,1-14,0	1,5	2,5	1,5	15	1,0	1,0	7	7	4,9	5,1	80	276
14,1-15,0	1,5	2,5	1,5	15	1,0	1,0	7	7	4,9	5,6	90	276
15,1-16,0	1,5	2,5	1,5	15	1,0	1,0	7	7	5,4	6,1	90	322
16,1-17,0	1,5	2,5	1,5	15	1,0	1,0	7	7	5,9	6,6	95	322
17,1-18,0	1,5	2,5	1,5	15	1,0	1,0	7	7	6,8	7,1	95	322
18,1-19,0	1,5	2,5	1,5	15	1,0	1,0	7	7	7,5	7,6	105	322
19,1-20,0	1,5	2,5	1,5	15	1,5	1,5	10	10	7,5	7,8	105	341
20,1-21,0	1,5	2,5	1,5	15	1,5	1,5	10	10	8,5	8,9	115	341
21,0-22,0	1,5	2,5	1,5	15	1,5	1,5	10	10	8,5	9,5	115	341
22,1-23,0	1,5	2,5	1,5	15	1,5	1,5	10	10	9,1	9,5	120	341
23,1-24,0	1,5	2,5	1,5	15	1,5	1,5	10	10	9,7	10,6	120	341
24,1-25,0	1,5	2,5	1,5	15	1,5	1,5	10	10	10,2	10,6	130	372
25,1-26,0	1,5	2,5	1,5	15	1,5	1,5	10	10	10,9	11,3	130	372
26,1-27,0	1,5	2,5	1,5	15	1,5	1,5	10	10	11,4	11,9	135	372
27,1-28,0	1,5	2,5	1,5	15	1,5	1,5	10	10	12,7	12,8	135	372
28,1-29,0	1,5	2,5	1,5	15	1,5	1,5	10	10	12,7	13,2	145	372
29,1-30,0	1,5	2,5	1,5	15	1,5	1,5	10	10	13,2	13,8	145	407
30,1-31,0	1,5	2,5	1,5	15	1,5	1,5	10	10	13,2	13,8	145	407



Эстонский научно-исследовательский институт
животноводства и ветеринарии
ЗССР, г.Тарту, ул. Ф.-Р.Крейцвальди, I

ОПЫТНАЯ СТАНЦИЯ ОЦЕНКИ БЫКОВ-ПРОИЗВОДИТЕЛЕЙ
ПО ПОТОМСТВУ "ВОРЕУСЕ"

На английском языке

Vastutav toimetaja T. Vint

=====

TRÜ rotaprint 1966. Trükipoognaid 3,75. Tingtrüki-
poognaid 3,41. Trükiarv 150. Paber 30 x 42. 1/4.
Paljundamisele antud 24. VIII 1966. Tell. nr. 398.

Tasuta

IX

1A-4935

TÜ RAAMATUKOGU



1 0300 00551852 9