



Ministry of Social Affairs of Estonia  
Department of Statistics and Analysis,  
Medical Statistics Bureau

Latvian Health Statistics and Medical  
Technology Agency, Health Statistics  
Department

Lithuanian Health Information Centre

***Health in the Baltic Countries***  
***2000***

***9-th edition***

**2001**

Ministry of Social Affairs of Estonia,  
Gonsiori 29, 15027 Tallinn, Estonia  
Ph. 372-6269700,  
Fax 372-6992209,  
E-mail: [smin@sm.ee](mailto:smin@sm.ee)  
Website: [www.sm.ee](http://www.sm.ee)

Health Statistics and Medical Technology Agency,  
Duntes 12/22, Riga LV 1005, Latvia  
Ph. 371-7501590  
Fax 371-7501591  
E-mail: [medstat@vsmta.lv](mailto:medstat@vsmta.lv)  
Website: [www.vsmta.lv](http://www.vsmta.lv)  
E. Lavendelis, director

Lithuanian Health Information Centre,  
Kalvariju 153, LT – 2042 Vilnius, Lithuania  
Phone/Fax: 370-2-773301  
E-mail: [admin.lsic@takas.lt](mailto:admin.lsic@takas.lt)  
Website: [www.sam.lt/lxic](http://www.sam.lt/lxic)  
Dr. A. Gaižauskiene, director

---

## Health in the Baltic Countries 2000

---

Editorial board:

Medical Statistics Bureau:

E. Palo, Dr. K. Toomsalu, M. Ruuge

Medical Statistics and Medical Technology Agency:

Dr. J. Karaškevica, Dr. J. Misinš, J. Voiceščuka, Dr. D. Mihalovska

Lithuanian Health Information Centre:

Dr. A. Gaižauskiene, R. Gaidelyte

### Preface

The ninth edition of “Health in the Baltic Countries” presents the latest available health statistics data in the Baltic Countries – The Republic of Estonia, The Republic of Latvia, The Republic of Lithuania and comprises main population health area – demographic trends, causes of death, selected diseases occurrence as well as health care resources and utilization.

Basic sources of data – annual and special reports of medical institutions, computerized health data bases and registers, certain vital statistics data are drawn from official publications of State Statistics Offices of the Baltic Countries.

The bulletin is a joint issue of Ministry of Social Affairs of Estonia, Department of Statistics and Analysis, Medical Statistics Bureau, Latvian Health Statistics and Medical Technology Agency, Lithuanian Health Information Centre from whom more comprehensive data may be obtained.

### Population at 01.01.2001

	<b>Estonia*</b>	<b>Latvia</b>	<b>Lithuania</b>
<b>Population (thousands)</b>	1366.7	2366.1	3692.6
<b>Per 1 km<sup>2</sup></b>	30.2	36.6	56.6
<b>Urban (thousands)</b>	921.0	1613.2	2515.9
<b>%</b>	67.4	68.2	68.1
<b>Rural (thousands)</b>	445.7	752.9	1176.7
<b>%</b>	32.6	31.8	31.9
<b>Males (thousands)</b>	630.4	1089.4	1740.7
<b>%</b>	46.1	46.0	47.1
<b>Females (thousands)</b>	736.3	1276.7	1951.9
<b>%</b>	53.9	54.0	52.9
<b>Under working age (%)</b>	19.3	17.3	20.7
<b>Working age (%)</b>	59.7	60.3	59.1
<b>Over working age (%)</b>	21.0	22.4	20.2
<b>Working age</b>			
<b>Males</b>	16–62	15–60	16–60
<b>Females</b>	16–57	15–57	16–56

\*1.01.2001 Based on the 2000 Population Census

## Health in the Baltic countries

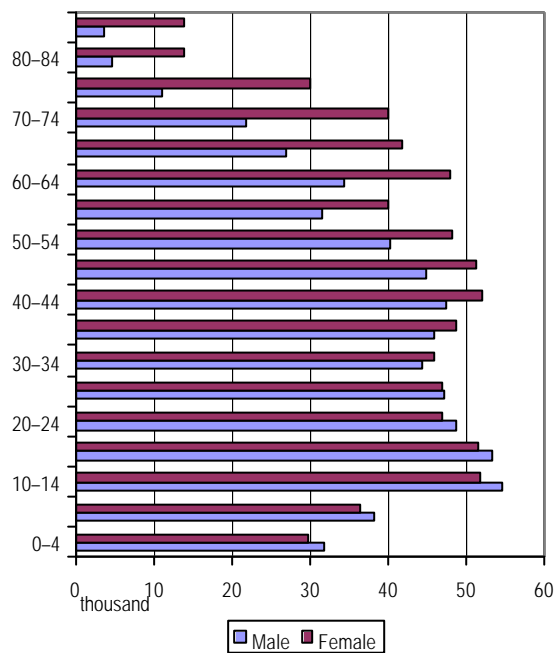
### General data

	<b>Estonia</b>	<b>Latvia</b>	<b>Lithuania</b>
Official name of the state	Republic of Estonia (Eesti Vabariik)	Republic of Latvia (Latvijas Republika)	Republic of Lithuania (Lietuvos Respublika)
Independence Day	24 February (1918)	18 November (1918)	16 February (1918)
State's governing body	Parliament (Riigikogu), 101 members, elected for the period of 4 years	Parliament (Saeima), 100 members, elected for the period of 4 years	Parliament (Seimas), 141 members, elected for the period of 4 years
Governmental structure	Republic, the President is elected for the period of 5 years	Republic, the President is elected for the period of 4 years	Republic, the President is elected for the period of 5 years
Area (thousands km <sup>2</sup> )	45.2	64.6	65.3
Major islands	Saaremaa, 2671 km <sup>2</sup> Hiiumaa, 989 km <sup>2</sup> Muhu, 198 km <sup>2</sup>	-	-
Major rivers	Võhandu, 162 km (through lake Tamula) Pärnu, 144 km Põltsamaa, 135 km	Daugava, 1005 km Gauja, 452 km Venta, 346 km	Nemunas, 937.4 km Neris, 509.5 km Venta, 346 km
Major lakes	Peipsi, 3555 km <sup>2</sup> (in Estonia 1529 km <sup>2</sup> ) Võrtsjärv, 271 km <sup>2</sup> Narva veehoidla (artificial lake) 191 km <sup>2</sup> (in Estonia 38 km <sup>2</sup> )	Lubans, 80.7 km <sup>2</sup> Raznas, 57.6 km <sup>2</sup> Engures, 40.5 km <sup>2</sup>	Drukšiai, 44.8 km <sup>2</sup> Dysnai, 24.4 km <sup>2</sup> Dusia, 23.3 km <sup>2</sup>
The highest point	Suur Munamägi, 318 m	Gaizinkalns, 311.6m	Juozapine, 293.6 m
Average daily temperature in January 2000	-2.5 <sup>0</sup> C	-1.4°C*	-1.4°C
Average daily temperature in July 2000	+16.3 <sup>0</sup> C	+17.0°C*	+16.0°C
Average daily temperature in 2000	+6.9 <sup>0</sup> C	+8.3°C*	+8.1°C
Administrative units	15 counties, 42 towns, 205 municipalities	26 rural areas, 77 cities and towns, 481 pagasti (rural municipalities)	10 counties, 60 municipalities, 106 cities and towns
Capital, inhabitants (thousands)	Tallinn 399,9**	Riga 759.2	Vilnius 589.2
Official language	Estonian	Latvian	Lithuanian
National currency	Estonian kroon= 100 sents 1 EEK = 0.125 DEM (0.059 USD)	Latvian lats=100 santims 1 LVL = 1.631 USD	Lithuanian lits=100 centas 1 LTL = 0.25 USD

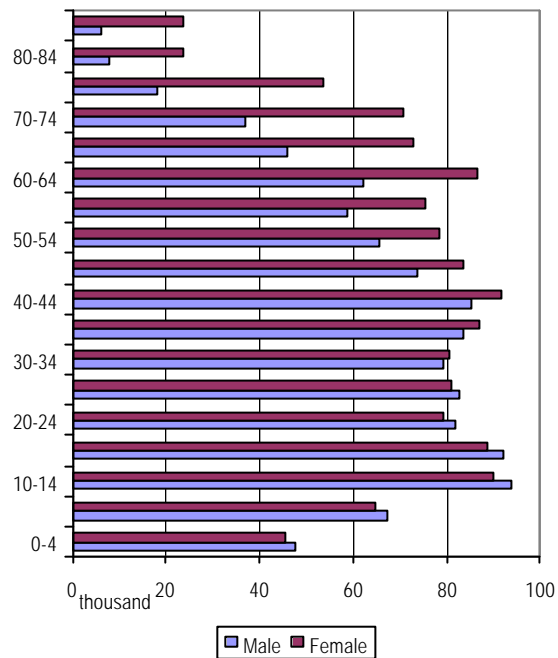
\*) in Riga

\*\*) Based on the 2000 Population Census

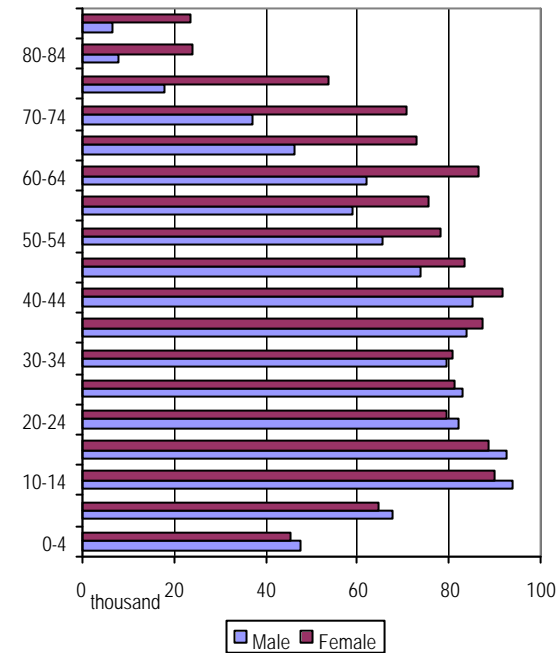
Population by age at 01.01.2001



Estonia

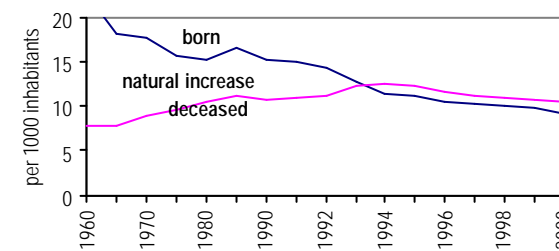
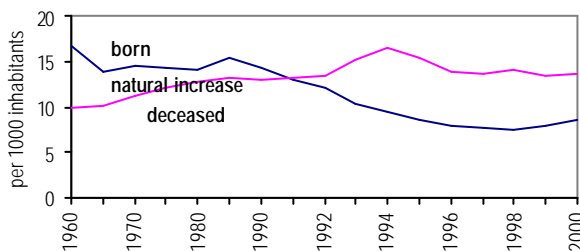
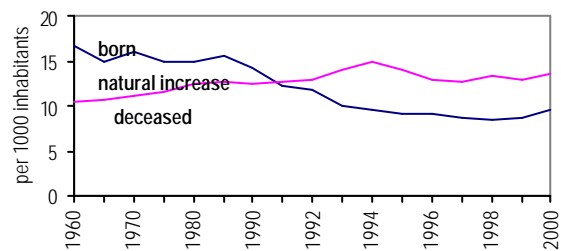


Latvia



Lithuania

Trends of demographics indicators



**Health in the Baltic countries**

**Resident population by age and sex at 01.01.2001**

	Estonia*						Latvia						Lithuania					
	Total		Males		Females		Total		Males		Females		Total		Males		Females	
	Number	%	Number	%	Number	%	Number	%	Number	%	Number	%	Number	%	Number	%	Number	%
Total	1366723	100.0	630385	100.0	736338	100.0	2366131	100	1089432	100	1276699	100	3692645	100.0	1740754	100.0	1951891	100.0
0-4	61517	4.5	31764	5.0	29753	4.0	93177	3.9	47814	4.4	45363	3.6	182557	4.94	94084	5.40	88473	4.53
5-9	74552	5.5	38158	6.1	36394	4.9	132038	5.6	67431	6.2	64607	5.1	235755	6.38	120799	6.94	114956	5.89
10-14	106287	7.8	54620	8.7	51667	7.0	183554	7.8	93676	8.6	89878	7.0	288538	7.81	147175	8.45	141363	7.24
15-19	104726	7.7	53360	8.5	51366	7.0	180729	7.6	92251	8.5	88478	6.9	275737	7.47	140332	8.06	135405	6.94
20-24	95448	7.0	48593	7.7	46855	6.4	161246	6.8	81989	7.5	79257	6.2	258835	7.01	130562	7.50	128273	6.57
25-29	93957	6.9	47163	7.5	46794	6.4	163828	6.9	82708	7.6	81120	6.4	277016	7.50	140188	8.05	136828	7.01
30-34	90265	6.6	44327	7.0	45938	6.2	160024	6.8	79247	7.3	80777	6.3	276347	7.48	140831	8.09	135516	6.94
35-39	94480	6.9	45786	7.3	48694	6.6	170619	7.2	83558	7.7	87061	6.8	299567	8.11	149706	8.60	149861	7.68
40-44	99232	7.3	47295	7.5	51937	7.1	176921	7.5	85223	7.8	91698	7.2	274792	7.44	133560	7.67	141232	7.24
45-49	95900	7.0	44733	7.1	51167	6.9	156982	6.6	73571	6.8	83411	6.5	229756	6.22	109039	6.26	120717	6.18
50-54	88466	6.5	40209	6.4	48257	6.6	143874	6.1	65593	6.0	78281	6.1	202789	5.49	92448	5.31	110341	5.65
55-59	71493	5.2	31587	5.0	39906	5.4	134171	5.7	58777	5.4	75394	5.9	196584	5.32	87057	5.00	109527	5.61
60-64	82297	6.0	34394	5.5	47903	6.5	148340	6.3	61974	5.7	86366	6.8	191689	5.19	80828	4.64	110861	5.68
65-69	68746	5.0	26980	4.3	41766	5.7	119114	5.0	46086	4.2	73028	5.7	172278	4.67	68005	3.91	104273	5.34
70-74	61911	4.5	21828	3.5	40083	5.4	107970	4.6	37158	3.4	70812	5.5	144145	3.90	50234	2.89	93911	4.81
75-79	41009	3.0	11014	1.7	29995	4.1	71687	3.0	17982	1.7	53705	4.2	94407	2.56	29175	1.68	65232	3.34
80-84	18426	1.3	4582	0.7	13844	1.9	31896	1.3	7992	0.7	23904	1.9	41213	1.12	11851	0.68	29362	1.50
>=85	17472	1.3	3657	0.6	13815	1.9	29961	1.3	6402	0.6	23559	1.8	50640	1.37	14880	0.85	35760	1.83
Unknown	539	0.0	335	0.1	204	0.0	-	-	-	-	-	-	-	-	-	-	-	-

\* Based on the 2000 Population Census

## Health in the Baltic countries

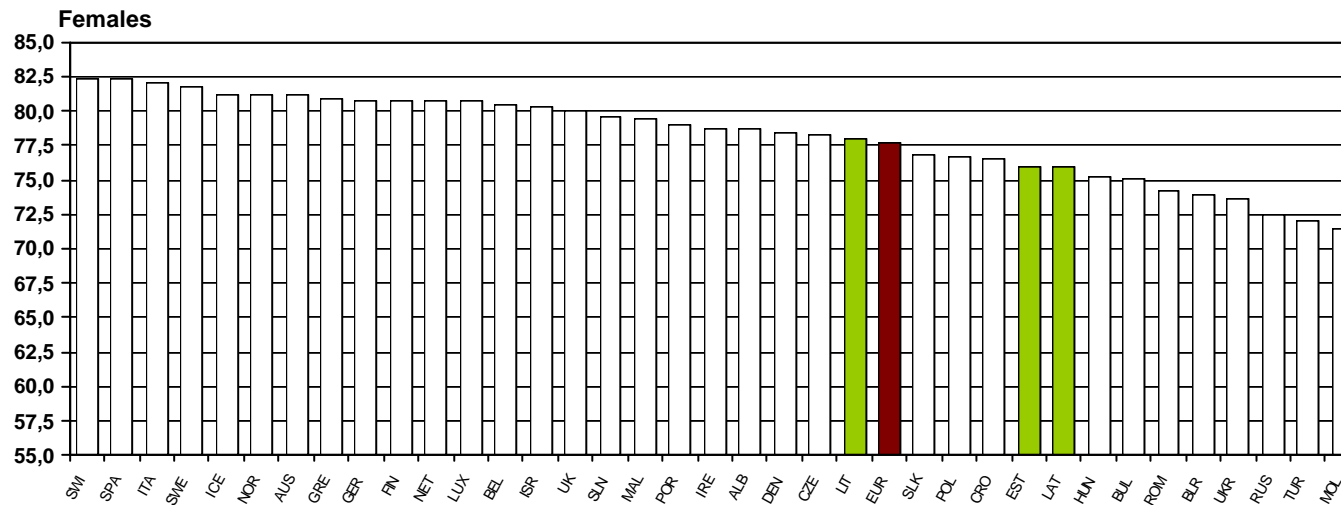
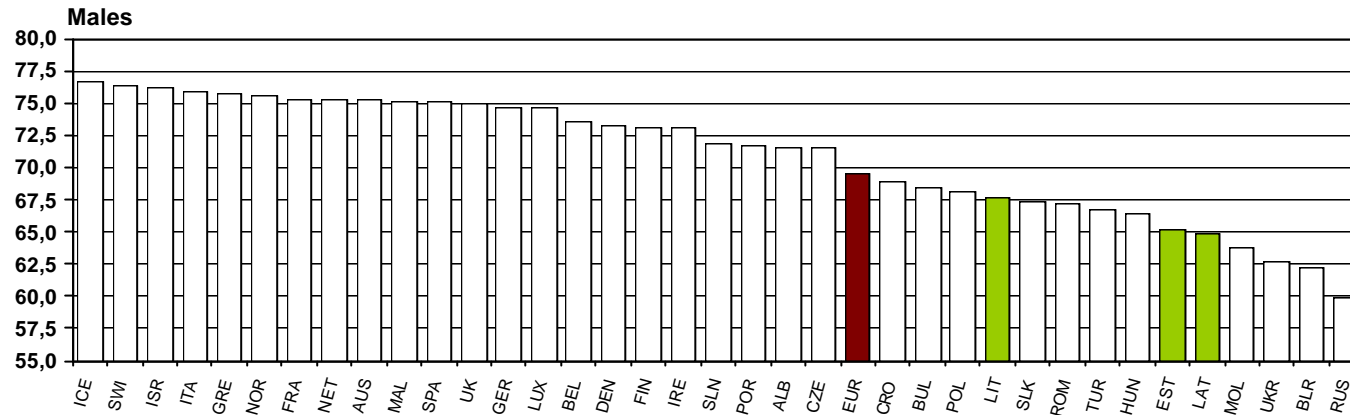
### Natality, general mortality and natural increase per 1000 population

Years	Estonia			Latvia			Lithuania		
	Natality	General mortality	Natural increase	Natality	General mortality	Natural increase	Natality	General mortality	Natural increase
1897	29.2*	19.1*	10.1*	30.8	20.6	10.2	-	-	-
1913	25.1	18.4	6.7	24.2	16.2	8.0	-	-	-
1920	18.4	16.9	1.5	17.0	19.6	-2.6	-	-	-
1925	18.3	16.5	1.8	22.2	14.9	7.3	28.9	16.9	12.0
1935	15.9	15.0	0.9	17.6	14.2	3.4	-	-	-
1940	16.1	17.0	-0.9	19.3	15.7	3.6	23.0	13.0	10.0
1950	18.4	14.4	4.0	17.6	12.9	4.7	23.6	12.0	11.6
1960	16.6	10.5	6.1	16.7	10.0	6.7	22.5	7.8	14.7
1965	14.8	10.6	4.2	13.8	10.1	3.7	18.1	7.9	10.2
1970	16.0	11.2	4.8	14.6	11.3	3.3	17.7	8.9	8.8
1975	15.0	11.6	3.4	14.2	12.2	2.0	15.7	9.5	6.2
1980	14.9	12.4	2.5	14.1	12.8	1.3	15.2	10.5	4.7
1985	15.5	12.6	2.9	15.4	13.2	2.2	16.5	11.1	5.4
1990	14.2	12.4	1.8	14.2	13.0	1.2	15.3	10.7	4.6
1991	12.3	12.6	-0.3	13.0	13.1	-0.1	15.0	11.0	4.0
1992	11.7	13.0	-1.3	12.0	13.5	-1.5	14.3	11.1	3.2
1993	10.0	14.0	-4.0	10.3	15.2	-4.9	12.7	12.3	0.4
1994	9.5	14.8	-5.3	9.5	16.4	-6.9	11.4	12.5	-1.1
1995	9.1	14.1	-4.9	8.6	15.5	-6.9	11.1	12.2	-1.1
1996	9.1	13.0	-3.9	7.9	13.8	-5.9	10.5	11.6	-1.1
1997	8.7	12.7	-4.1	7.6	13.6	-6.0	10.2	11.1	-0.9
1998	8.5	13.4	-5.0	7.5	14.0	-6.5	10.0	11.0	-1.0
1999	8.7	12.8	-4.1	8.0	13.5	-5.5	9.8	10.8	-1.0
2000	9.6**	13.5**	-3.9**	8.5	13.6	-5.1	9.2	10.5	-1.3

\* North Estonia 1896-1900

\*\* For Estonia - based on the 2000 Population Census

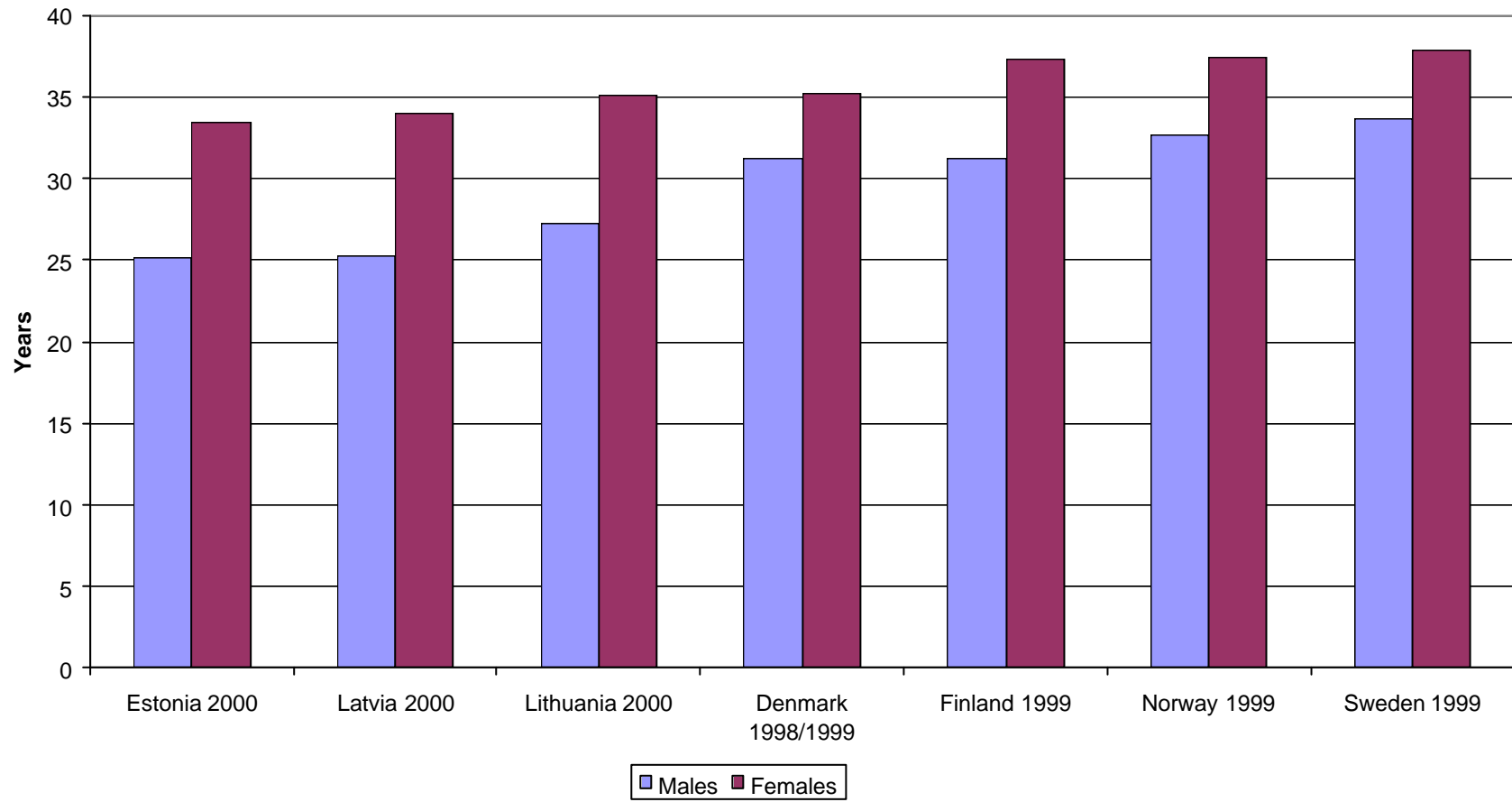
Life expectancy at birth in European countries\*



\* WHO data 1995-1999  
Data for Estonia, Latvia and Lithuania - 2000



Life expectancy at the age 45



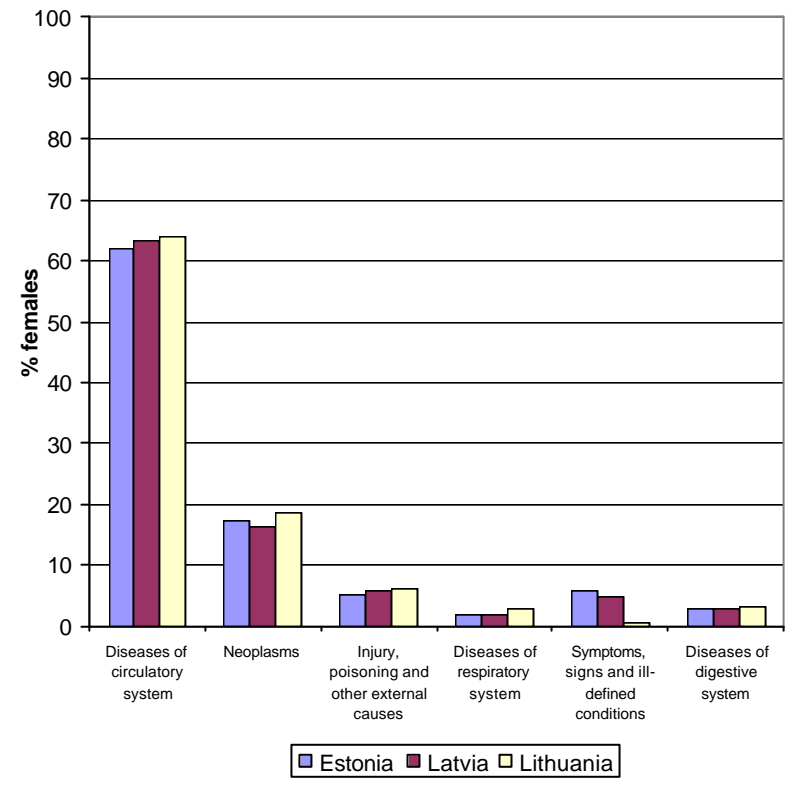
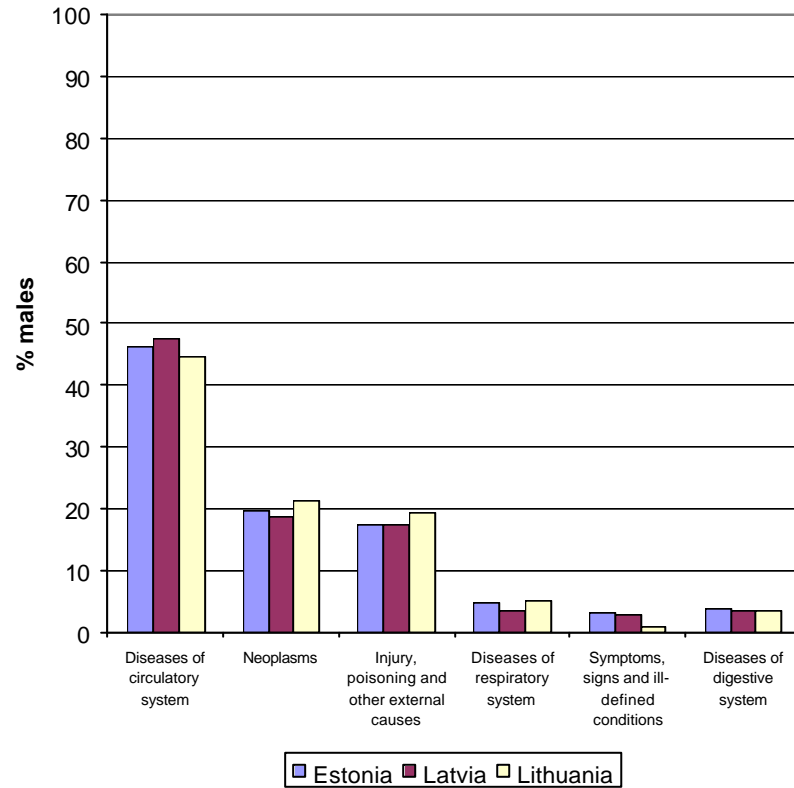
**Health in the Baltic countries**

**Deaths by cause per 100000 population in 2000**

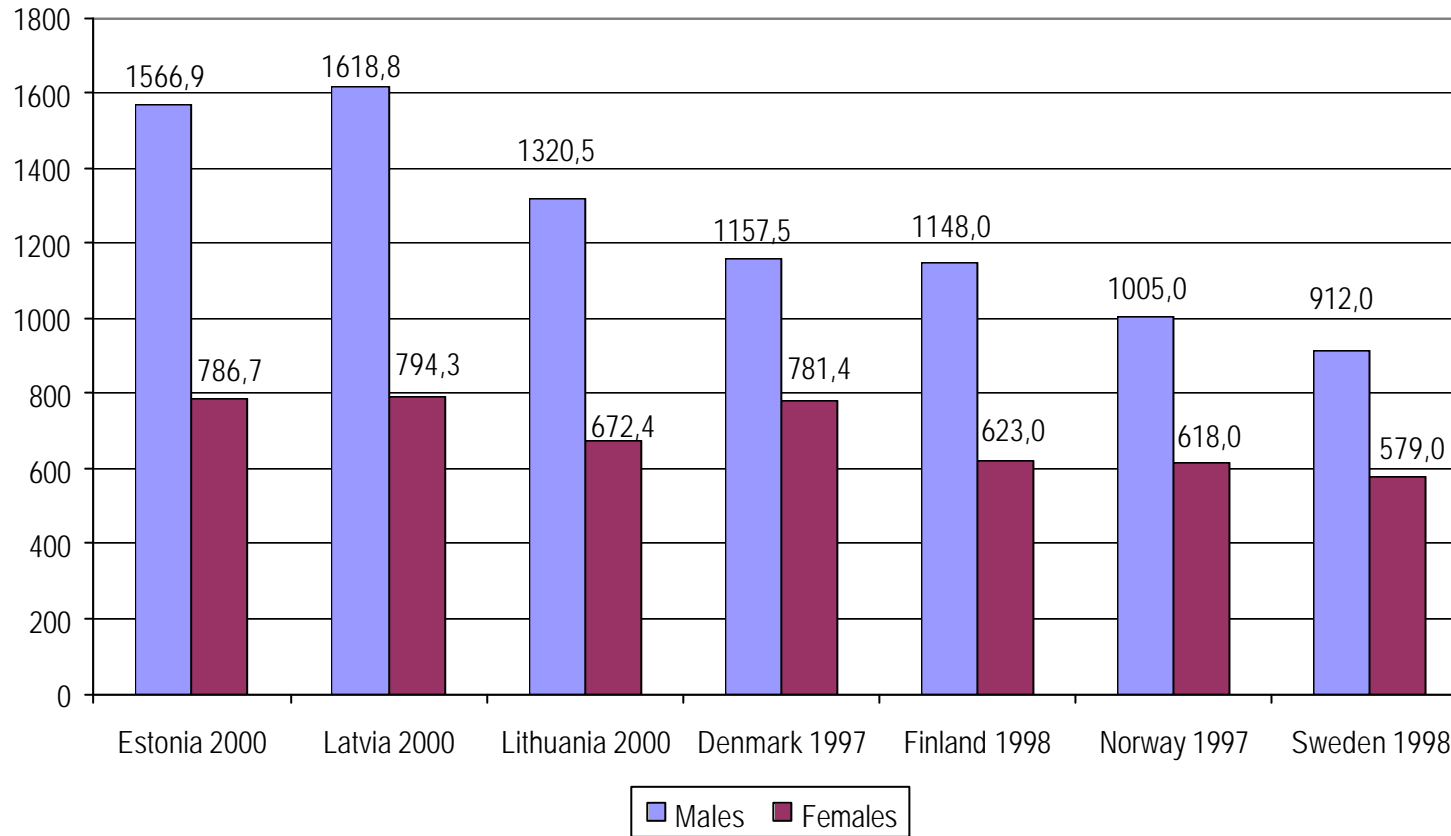
Causes of death	Estonia			Latvia			Lithuania		
	Total	Males	Females	Total	Males	Females	Total	Males	Females
Certain infectious and parasitic diseases	10.7	16.8	5.6	16.1	25.7	8.0	13.3	20.9	6.4
Neoplasm	247.6	288.0	212.9	237.4	277.2	203.4	211.4	250.4	176.7
Diseases of the blood and blood forming organs and certain disorders involving the immune mechanisms	0.7	0.5	0.9	0.9	0.5	1.3	0.8	0.5	1.1
Endocrine, nutritional and metabolic diseases	11.5	10.8	12.2	10.9	8.7	12.7	7.4	6.4	8.3
Mental disorders and behavioural disorders	1.9	3.2	0.8	8.7	13.5	4.7	3.1	3.7	2.6
Diseases of the nervous system	13.5	15.2	12.1	10.7	13.3	8.6	8.7	11.7	6.0
Diseases of the eye and adnexa	-	-	-	-	-	-	-	-	-
Diseases of the ear and mastoid process	0.1	-	0.1	0.3	0.2	0.4	0.03	-	0.05
Diseases of the circulatory system	729.4	680.7	771.1	752.9	705.8	793.1	566.4	521.0	606.9
Diseases of the respiratory system	44.5	68.7	23.9	36.1	50.7	23.6	42.2	60.1	26.1
Diseases of the digestive system	46.6	57.8	37.0	42.1	49.9	35.5	34.4	40.3	29.2
Diseases of the skin and subcutaneous tissue	1.3	1.9	0.8	1.6	1.5	1.8	0.4	0.3	0.4
Diseases of the musculo-skeletal and connective tissue	3.3	2.9	3.7	3.5	1.9	4.8	2.1	1.1	3.0
Diseases of the genito-urinary system	12.9	12.2	13.4	15.3	15.6	15.0	9.1	9.6	8.7
Pregnancy, childbirth and puerperium*	-	-	0.7	-	-	0.4	-	-	0.2
Certain conditions originating in perinatal period	3.7	5.1	2.6	4.1	5.4	3.0	2.5	2.8	2.3
Congenital malformations, deformations and chromosomal abnormalities	3.9	4.3	3.7	5.3	6.7	4.1	5.0	5.1	4.8
Symptoms, signs and abnormal clinical and laboratory findings, not elsewhere classified	60.1	45.8	72.4	52.0	41.8	60.6	7.2	10.5	4.2
Injury, poisoning and certain other consequences of external causes	153.4	255.9	65.6	159.0	260.6	72.3	138.1	266.4	59.2
<b>TOTAL</b>	<b>1345.5</b>	<b>1469.6</b>	<b>1239.3</b>	<b>1357.1</b>	<b>1478.8</b>	<b>1253.3</b>	<b>1053.1</b>	<b>1171.3</b>	<b>947.7</b>

\*) per 100000 females only

Main causes of death in 2000

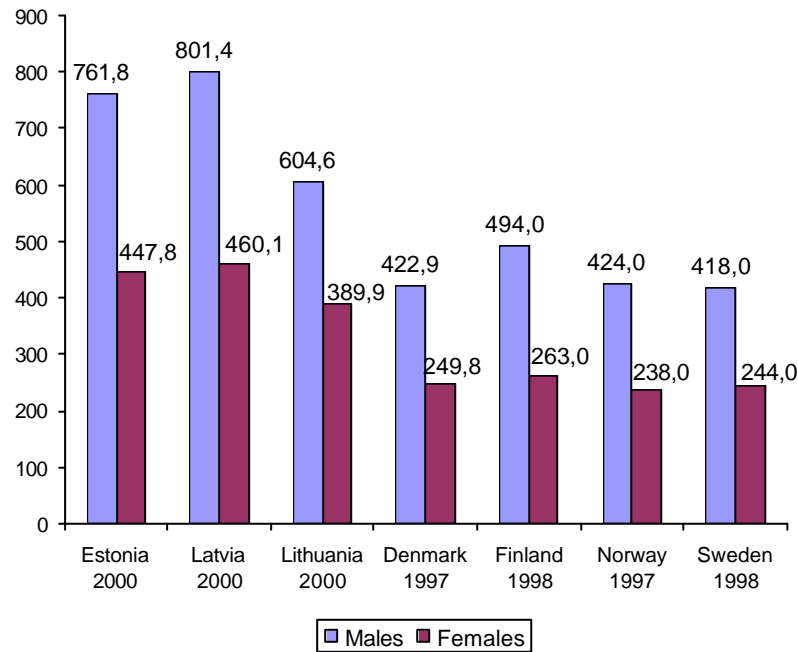


**Age-standardized death rates**  
(per 100000 European standard population)

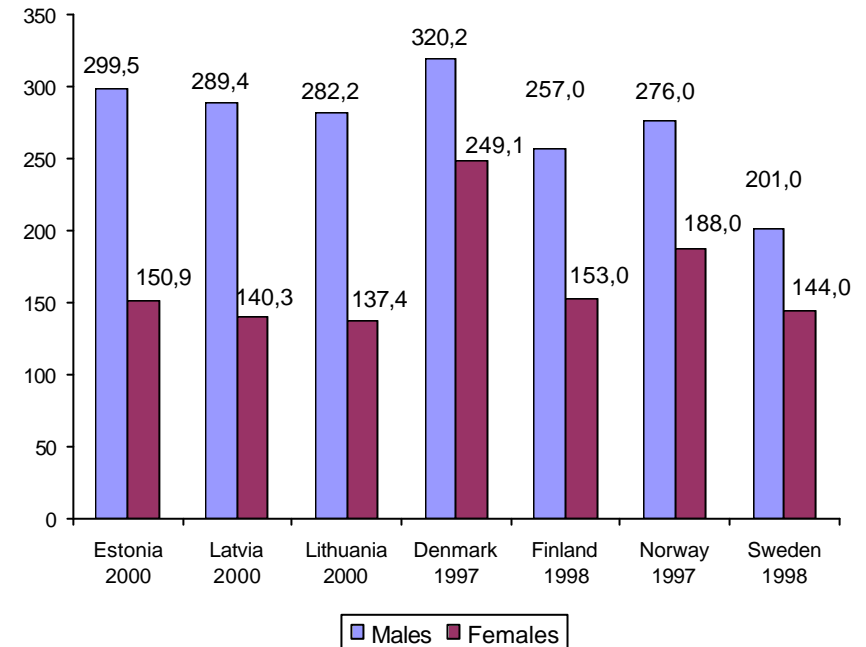


**Age-standardized death rates**  
(per 100000 European standard population)

**by diseases of the circulatory system**

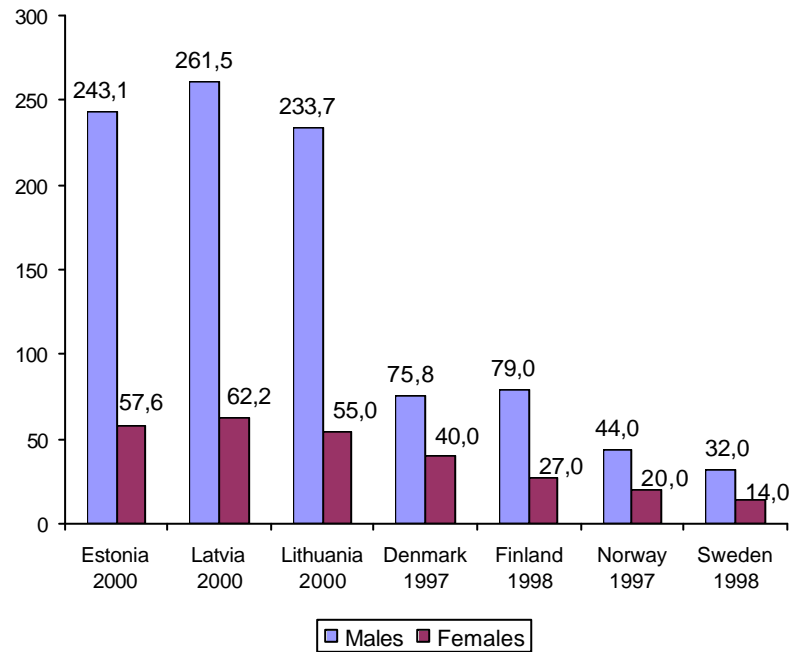


**by malignant neoplasms**

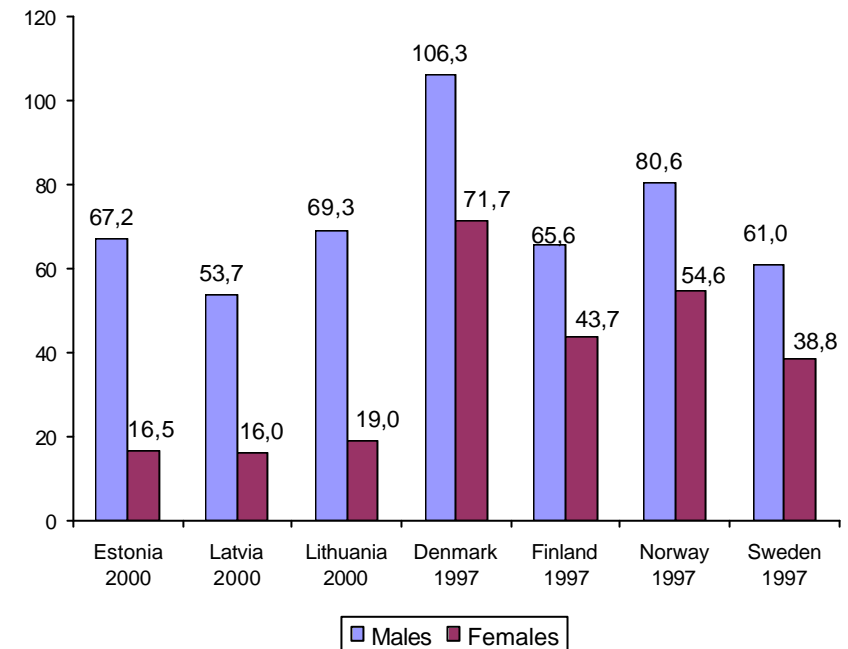


**Age-standardized death rates**  
(per 100000 European standard population)

**by accidents, injuries and poisoning**

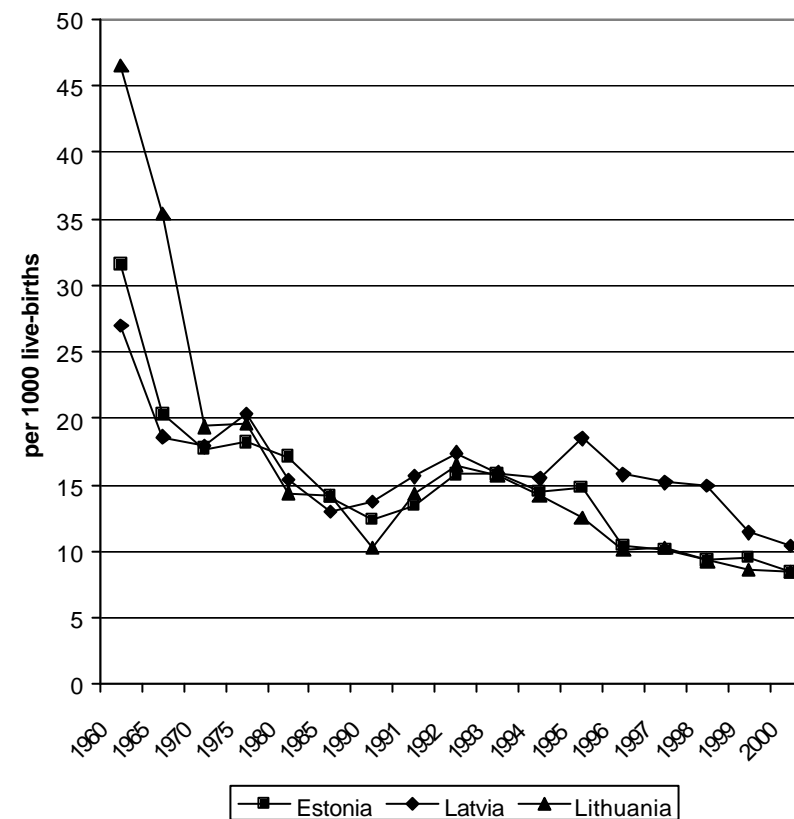


**by diseases of the respiratory system**

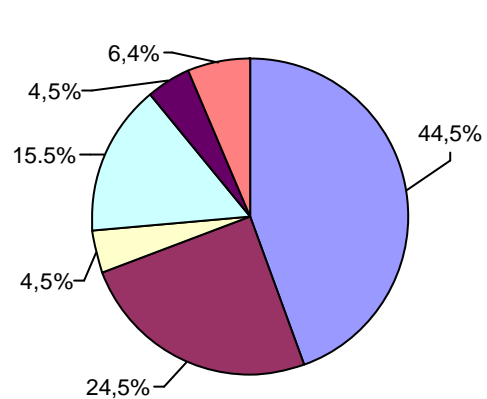


**Infant mortality**  
(per 1000 live-births)

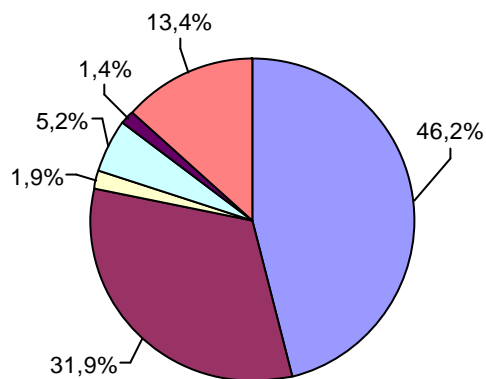
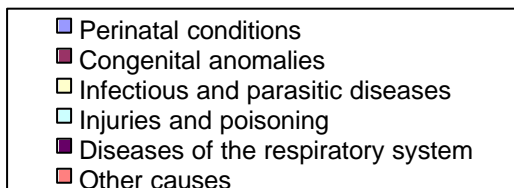
Years	Estonia	Latvia	Lithuania
1925	-	107.2	179.0
1935	-	78.9	-
1940	84.9	74.9	98.5
1960	31.6	27.0	46.5
1965	20.3	18.6	35.4
1970	17.7	17.9	19.4
1975	18.2	20.3	19.6
1980	17.1	15.4	14.4
1985	14.1	13.0	14.2
1990	12.4	13.7	10.3
1991	13.4	15.6	14.3
1992	15.8	17.4	16.5
1993	15.8	15.9	15.7
1994	14.5	15.5	14.2
1995	14.8	18.5	12.5
1996	10.4	15.8	10.1
1997	10.1	15.2	10.3
1998	9.3	14.9	9.3
1999	9.5	11.4	8.6
2000	8.4	10.4	8.5



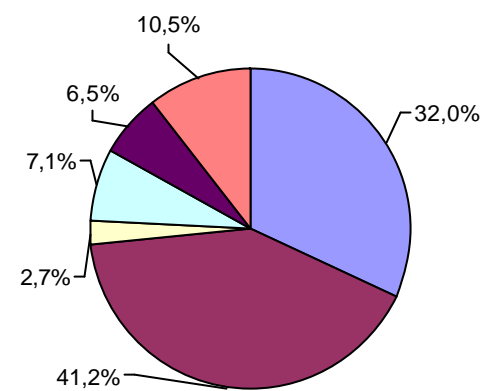
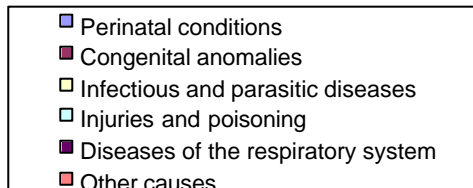
Structure of infant mortality (%) in 2000



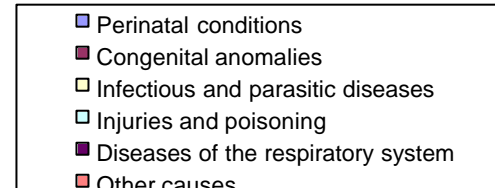
Estonia



Latvia



Lithuania





**Infant mortality by causes**  
per 10000 live births in 2000

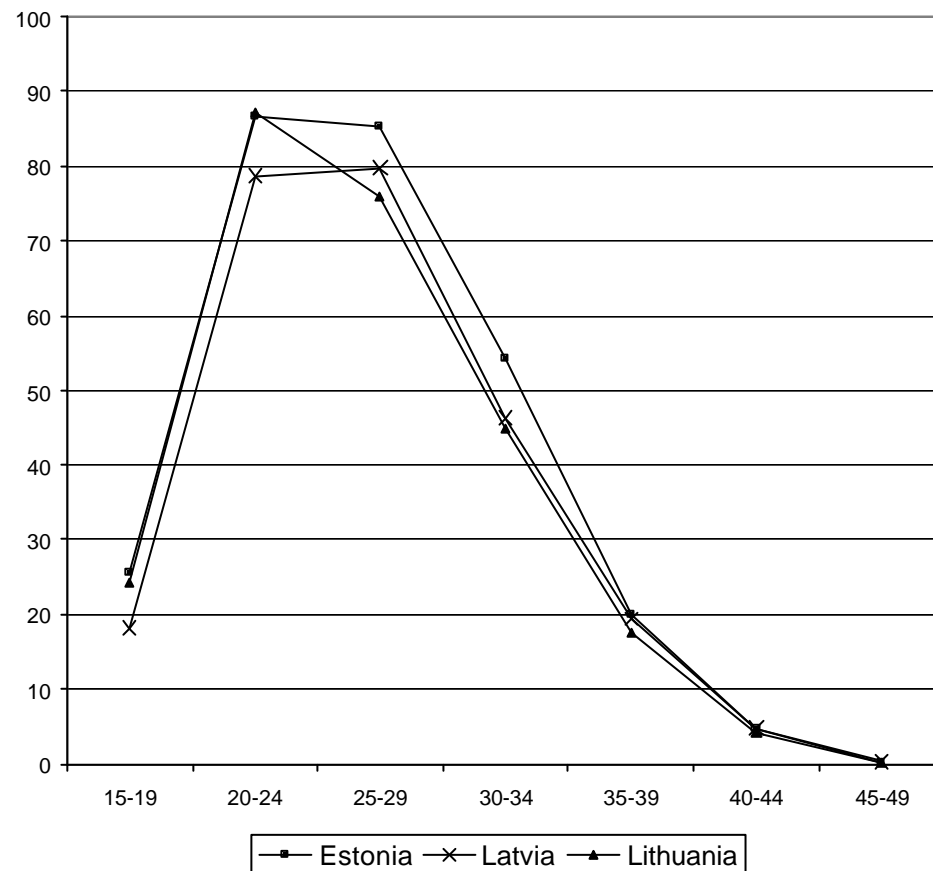
	Estonia		Latvia		Lithuania	
	Rate	%	Rate	%	Rate	%
Certain conditions originating in the perinatal period	37.4	44.5	47.9	46.2	27.5	32.0
Congenital anomalies	20.6	24.5	33.1	31.9	35.4	41.1
Diseases of the respiratory system	3.8	4.5	1.5	1.4	5.6	6.5
Infectious and parasitic diseases	3.8	4.5	2.0	1.9	2.3	2.7
Accidents, injury and poisoning	13.0	15.5	5.4	5.2	6.2	7.1
Diseases of the nervous system and sense organs	2.3	2.7	1.0	1.0	2.3	2.7
Diseases of the digestive system	-	-	1.0	1.0	-	-
Other causes	3.1	3.6	11.9	11.4	6.7	7.8
<b>TOTAL</b>	<b>84.0</b>	<b>100.0</b>	<b>103.7</b>	<b>100.0</b>	<b>86.1</b>	<b>100.0</b>

**Perinatal, neonatal and maternal mortality in 2000**

	Estonia	Latvia	Lithuania
Perinatal mortality per 1000 births	8.9	12.4	9.8
Foetal birth rate per 1000 births	5.1	7.8	6.4
Neonatal mortality per 1000 live births	5.8	6.5	4.8
Early neonatal mortality per 1000 live births	3.8	4.6	3.4
Maternal mortality per 100000 live births	38.2	24.7	11.8
Standard perinatal mortality	6.6	9.2	7.4
Standard still-birth rate	4.3	5.8	5.3

**Birth rates by age of mother**  
per 1000 women in 2000

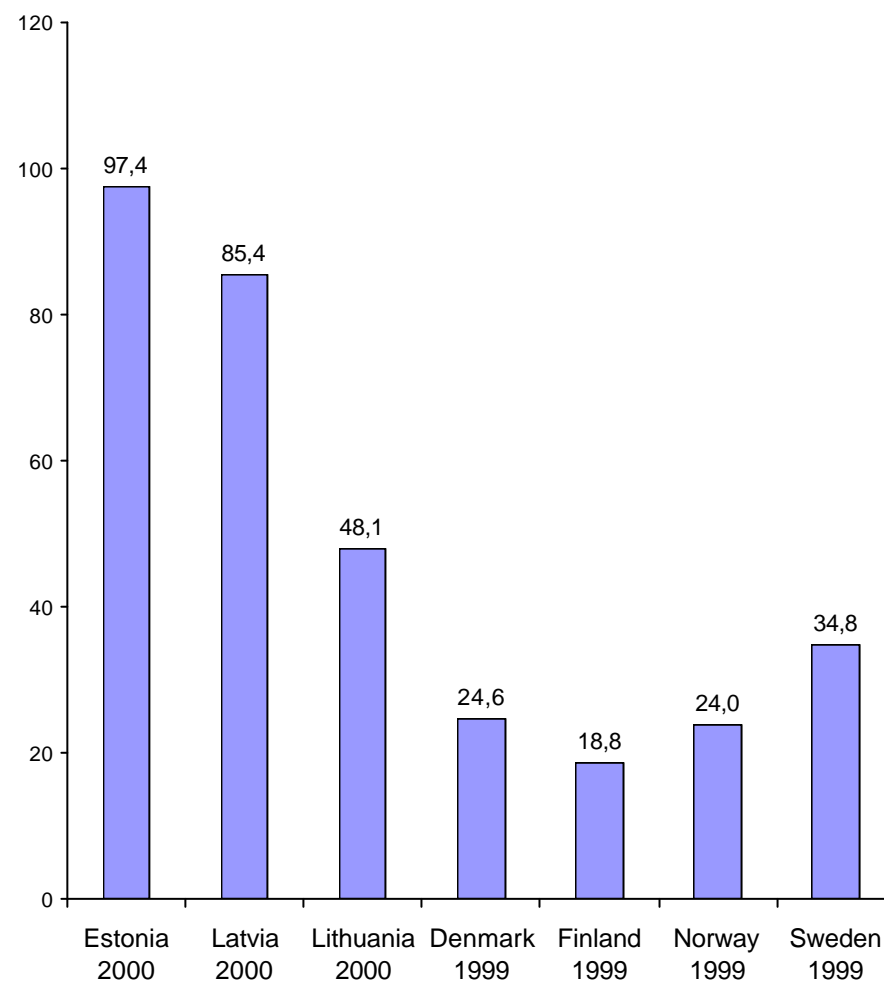
	<b>Estonia</b>	<b>Latvia</b>	<b>Lithuania</b>
Women 15-49 years of age	38.2	34.2	36.1
Of which:			
15-19	25.7	18.2	24.3
20-24	86.7	78.7	87.3
25-29	85.3	79.8	76.0
30-34	54.2	46.3	44.8
35-39	19.9	19.4	17.5
40-44	4.8	4.8	4.1
45-49	0.2	0.3	0.2
<b>Total fertility rate</b>	<b>1.39</b>	<b>1.23</b>	<b>1.27</b>



**Abortions in 2000**

	<b>Estonia</b>	<b>Latvia</b>	<b>Lithuania</b>
<b>All abortions</b>			
Total number	15340	22201	23683
Per 1000 woman aged 15-49 years	44.8	37.5	25.1
Per 100 live births	117.2	100	69.6
<b>Induced abortions</b>			
Total number	12745	17240	16259
Per 1000 woman aged 15-49 years	37.2	29.1	17.2
Per 100 live births	97.4	85.4	48.1
<b>Percentage:</b>			
Spontaneous abortions	10.6	16.1	22.3
Legal abortions	80.8	75.5	68.3
Therapeutic abortions	2.3	2.2	0.3
Other abortions	6.3	6.3	9.1

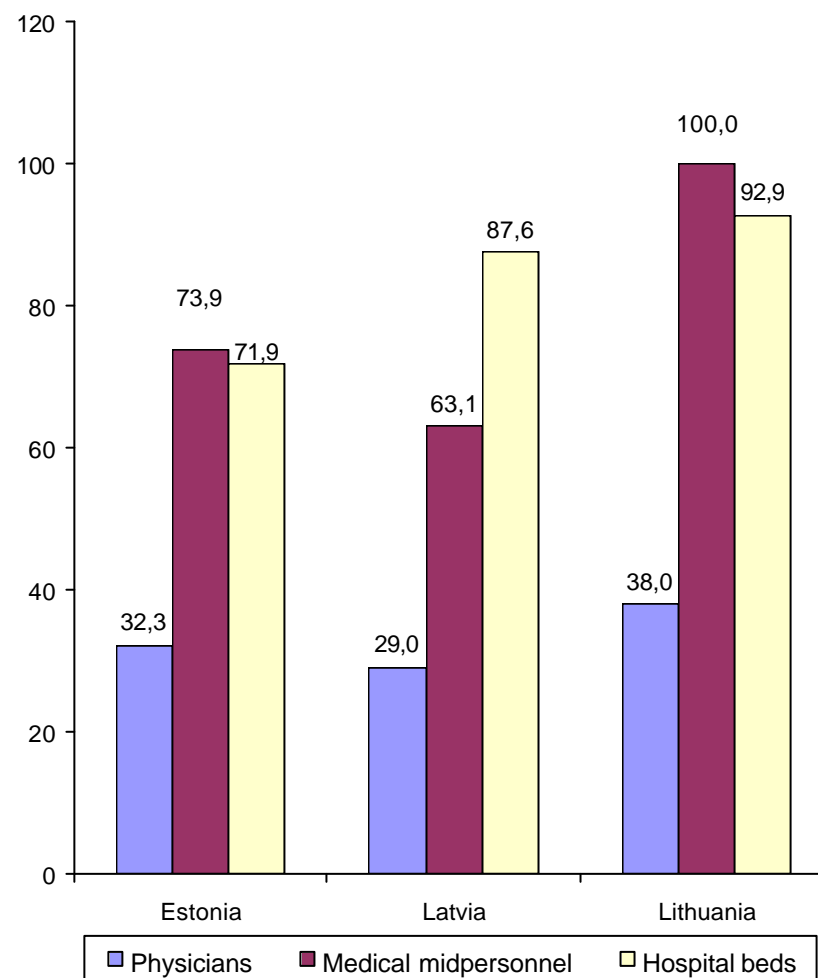
**Induced abortions per 100 live births**



Health facilities in 2000

	Estonia	Latvia	Lithuania
<b>Hospitals</b>	68	142	187
Hospital beds:			
Thousands	9.2	20.7	34.1
Per 10000 population	71.9	87.6	92.9
<b>Physicians:</b>			
Thousands	4.4	6.9	14.0
Per 10000 population	32.3	29.0	38.0
<b>Dentists:</b>			
Thousands	1.0	1.3	2.4
Per 10000 population	7.4	5.4	6.6
<b>Medical midpersonnel:</b>			
Thousands	10.2	14.9	36.9
Per 10000 population	73.9	63.1	100.0
<b>Hospital admission:</b>			
Thousands	279.5	525.1	862.9
Per 100 population	20.4	22.1	23.4
<b>Physicians visits:</b>			
Millions	8.2	11.4	22.2
Per 1inhabitant	6.0	4.8	6.0

Number of physicians, medical midpersonnel and hospital beds per 10000 population in 2000



Physicians by specialities at the end of 2000

	Estonia		Latvia		Lithuania	
	Number	Per 10000 population	Number	Per 10000 population	Number	Per 10000 population
TOTAL*	4414	32.3	6856	29.0	14034	38.0
of which:						
Family doctors and general practitioners	448**	3.3	966	4.1	692**	1.9
Internal medicine	470	3.4	607	2.6	2907	7.9
Surgery (include orthopaedics)	383	2.8	633	2.7	1154	3.1
Paediatrics	411	3.0	465	2.0	1432	3.9
Gynaecology (include obstetrics)	270	2.0	465	2.0	834	2.3
Oncology	30	0.2	86	0.4	142	0.4
Otolaryngology	97	0.7	170	0.7	297	0.8
Ophthalmology	112	0.8	195	0.8	361	1.0
Anaesthesiology	230	1.7	358	1.5	551	1.5
Neurology	144	1.1	236	1.0	488	1.3
Psychiatry	169	1.2	216	0.9	493	1.3
Narcology	-	-	74	0.3	45	0.1
Tuberculosis	25	0.2	142	0.6	155	0.4
Infectology	24	0.2	54	0.2	89	0.2
Epidemiology	-	-	76	0.3	105	0.3
Dermatology & venerology	76	0.6	115	0.5	185	0.5
Radiology	178	1.3	278	1.2	362	1.1
Pathology	32	0.2	45	0.2	63	0.2
Forensic medicine	24	0.2	47	0.2	50	0.1
Laboratory	145	1.1	230	1.0	197	0.5
Hygiene	99***	0.7	85	0.4	162	0.4
Others	1047	7.7	1313	5.5	3270	8.9
* Number of dentists is not included    ** Certificated family doctors only    *** Hygiene and epidemiology						

Hospital beds by speciality at the end of 2000

	Estonia			Latvia*			Lithuania		
	Number of beds	Per 10000 population	%	Number of beds	Per 10000 population	%	Number of beds	Per 10000 population	%
<b>TOTAL</b>	9828	71.9	100.0	20728	87.3	100.0	34145	92.5	100.0
Of which									
Internal medicine	2231	16.3	22.7	3761	15.8	18.1	6122	16.6	17.9
Rehabilitation	302	2.2	3.1	570	2.4	2.7	1072	2.9	3.1
Surgery (include orthopaedics)	1820	13.3	18.5	4003	16.9	19.3	6035	16.3	17.7
Oncology (include radiology)	260	1.9	2.6	895	3.8	4.3	1196	3.2	3.5
Otolaryngology	138	1.0	1.4	273	1.2	1.3	627	1.7	1.8
Ophthalmology	130	1.0	1.3	290	1.2	1.4	476	1.3	1.4
Obstetrics	445	3.3	4.5	700	2.9	3.4	1535	4.2	4.5
Gynaecology	342	2.5	3.5	734	3.1	3.5	1197	3.2	3.5
Neurology	468	3.4	4.8	1248	5.3	6.0	2070	5.6	6.1
Dermatology & venerology	152	1.1	1.5	168	0.7	0.8	292	0.8	0.9
Infectious	236	1.7	2.4	777	3.3	3.7	1085	2.9	3.2
Tuberculosis	317	2.3	3.2	1257	5.3	6.1	2255	6.1	6.6
Paediatrics	597	4.4	6.1	915	3.9	4.4	1943	5.3	5.7
Psychiatry	1083	7.9	11.0	4002	16.9	19.3	4129	11.2	12.1
Narcology	-	-	-	405	1.7	2.0	341	0.9	1.0
General & nursing	-	-	-	542	2.3	2.6	3233	8.8	9.5

\* Without short term social care beds

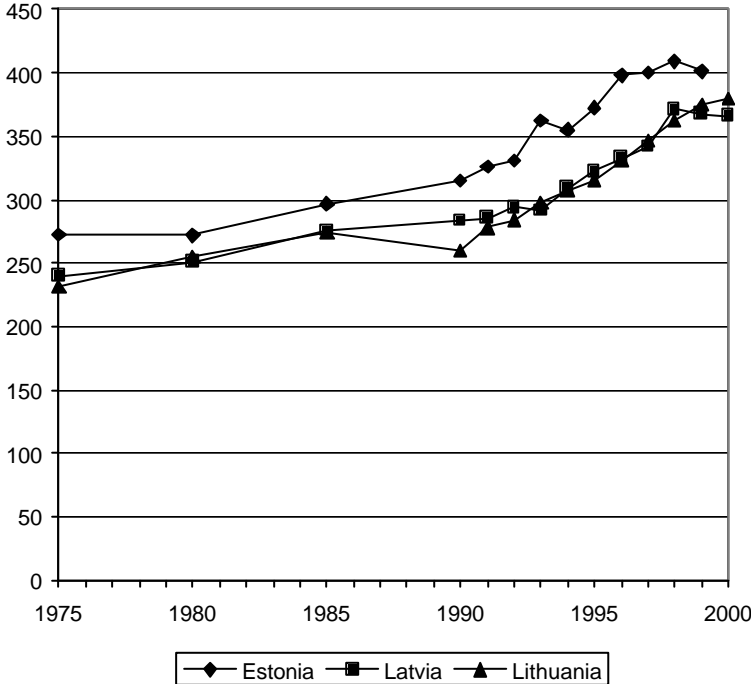
**Selected notifiable diseases**  
per 100000 population in 2000

	<b>Estonia</b>	<b>Latvia</b>	<b>Lithuania</b>
Typhoid fever and paratyphoid	-	0.04	0.1
Salmonella infections	40.6	43.5	32.5
Bacillary dysentery	14.2	17.2	28.1
Other intestinal infections	264.6	149.3	219.4
Diphtheria	0.1	11.1	0.05
Whooping cough	36.7	5.7	2.5
Meningococcal infection	0.8	0.8	1.8
Measles	0.7	-	0.5
Tick-borne viral encephalitis	19.9	22.9	11.3
Viral hepatitis	78.1	71.9	14.3
A	5.8	10.0	2.1
B	31.9	30.3	9.4
Acute upper respiratory infections	19557.3	15651.6	11441.5
Influenza	2199.6	2720.1	2554.2
Malignant neoplasm			
Incidence	423.0*	366.0	379.5
Prevalence	2311.1*	2141.7	1631.8
Tuberculosis			
Incidence (excl. relapses)	46.9	72.3	63.0
Prevalence	58.7	108.6	290.3
Syphilis	42.9	43.0	31.7
Gonorrhoea	63.3	31.4	27.2
AIDS	0.2	1.0	0.2
HIV carrier	28.5	19.7	1.8

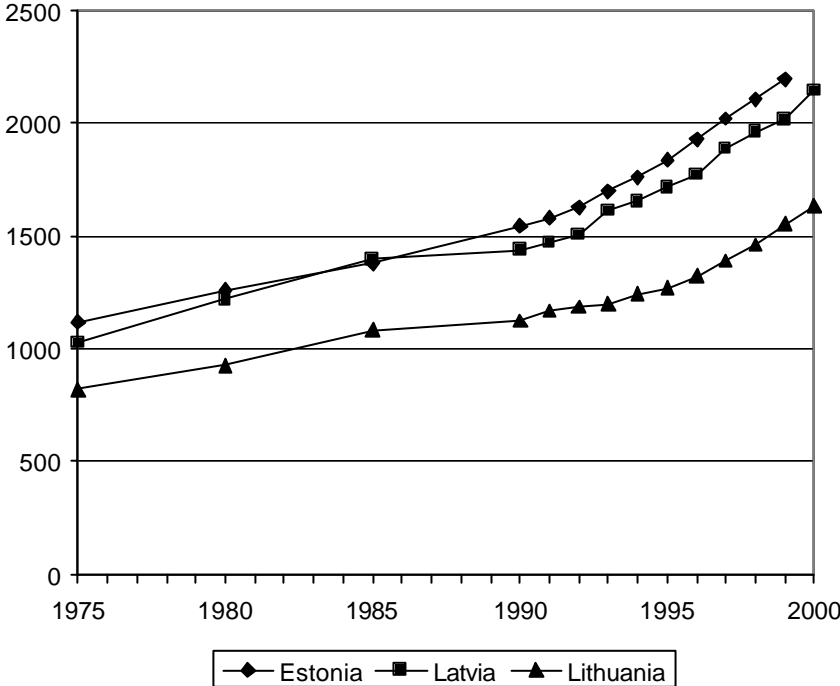
\* data for 1998

Malignant neoplasms  
(per 100000 population)

incidence



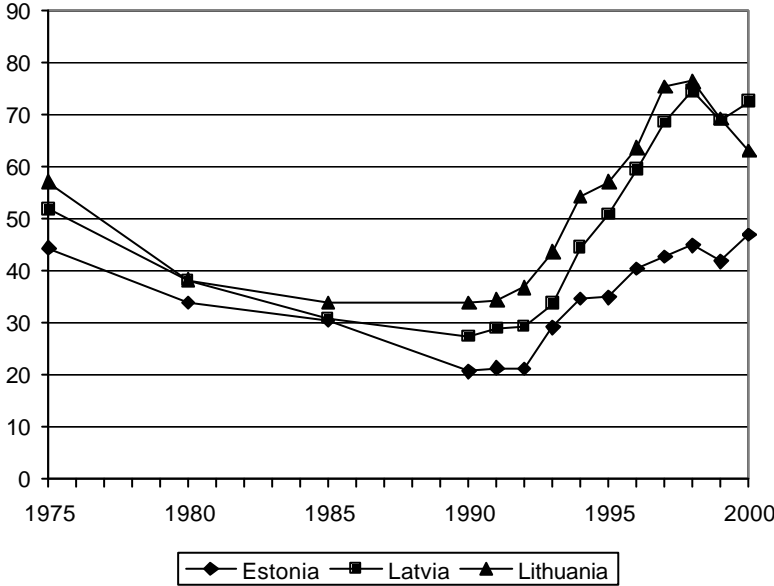
prevalence



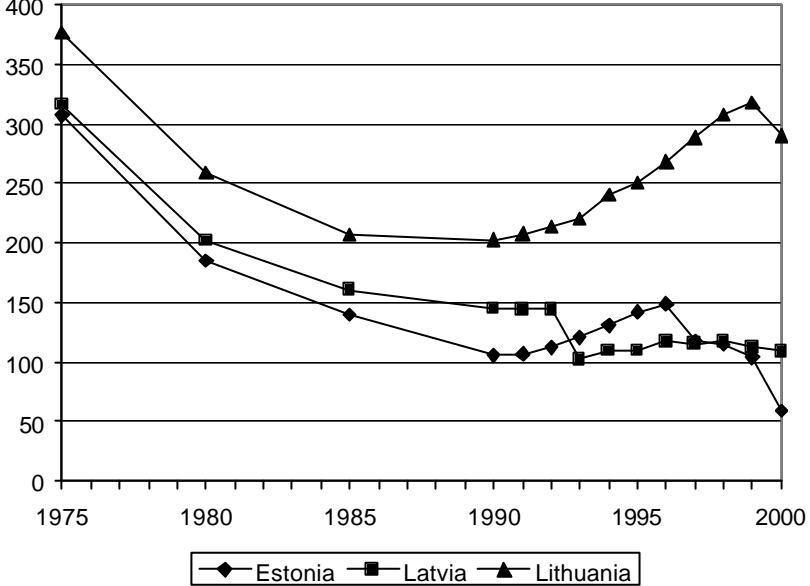


### Tuberculosis (per 100000 population)

incidence (excl. relapses)

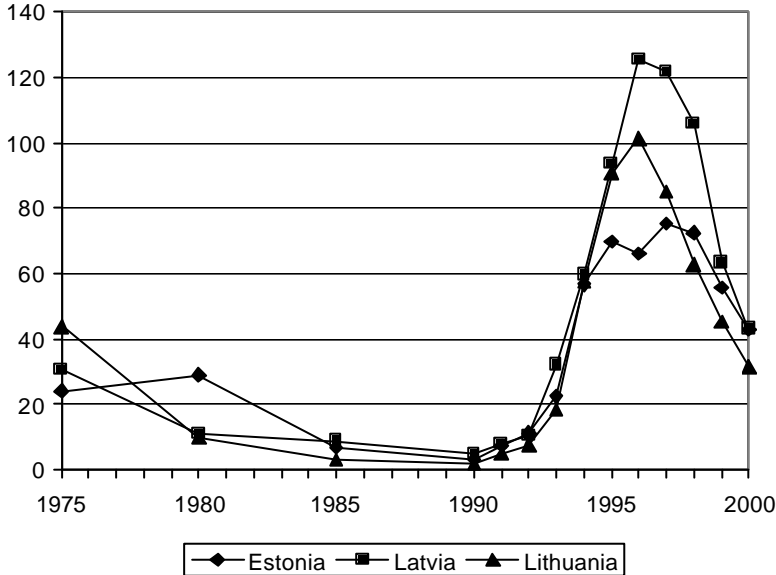


prevalence

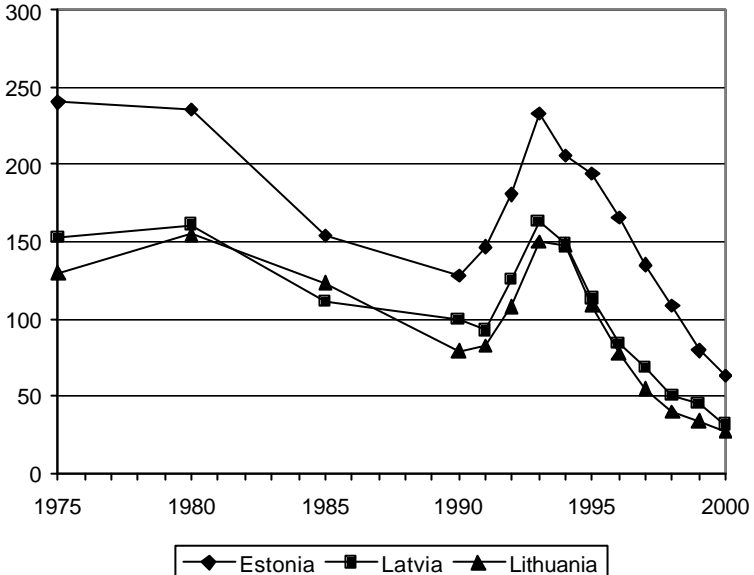


Health in the Baltic countries

Incidence of syphilis  
(per 100000 population)



Incidence of gonorrhoea  
(per 100000 population)

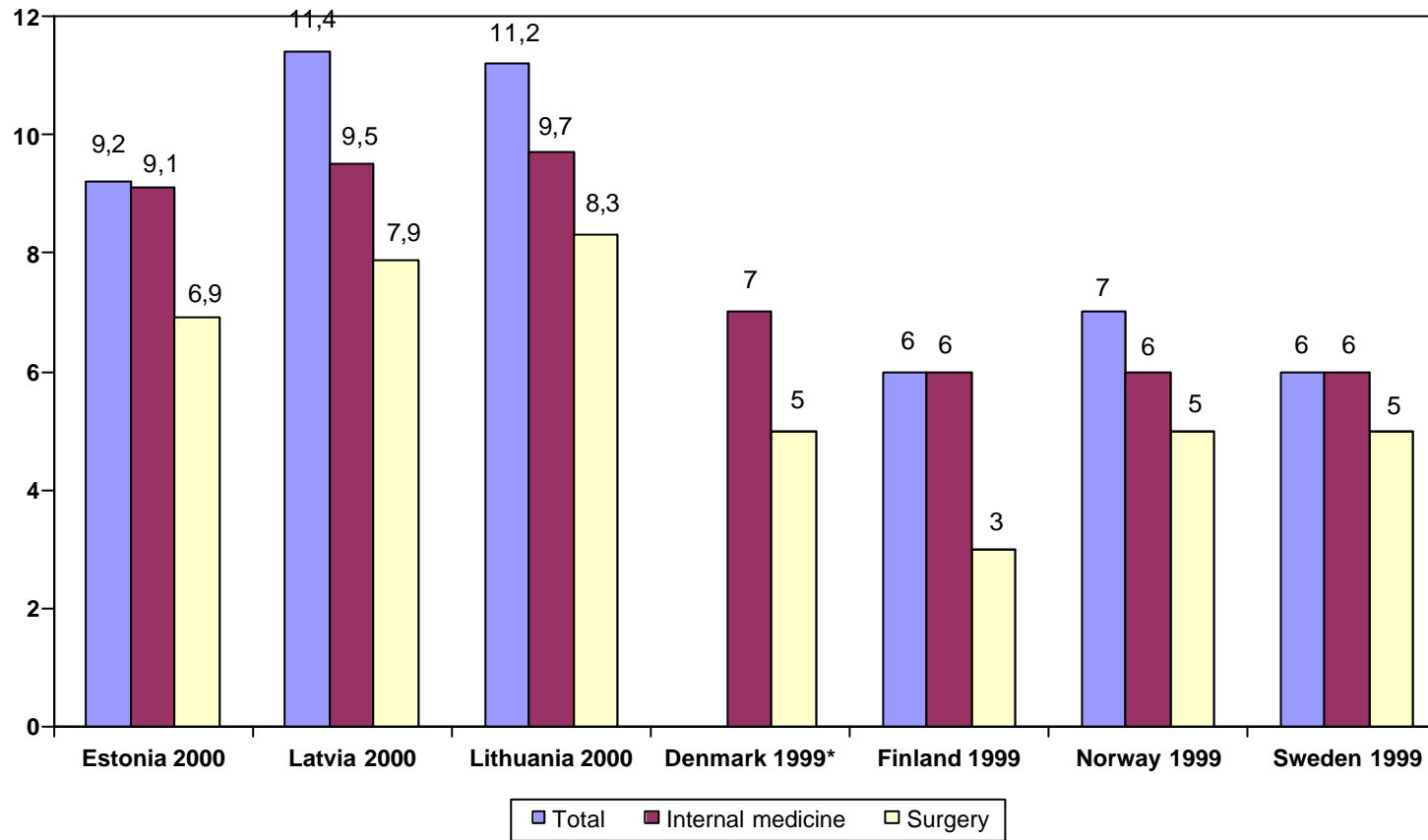


Hospital beds utilization by speciality in 2000

	Estonia					Latvia*					Lithuania				
	Admission per 1000 pop.	Bed occupancy		Average length of stay	Bed turnover	Admission per 1000 pop.	Bed occupancy		Average length of stay	Bed turnover	Admission per 1000 pop.	Bed occupancy		Average length of stay	Bed turnover
		Days	%				Days	%				Days	%		
TOTAL	204.1	256.1	69.9	9.2	27.7	221.7	290.2	79.3	11.4	25.4	233.5	280.5	76.8	11.2	25.1
Internal medicine	46.1	263.7	72.2	9.1	28.4	49.2	294.1	80.4	9.5	31.1	47.6	295.4	80.9	9.7	30.5
Rehabilitation	2.8	212.0	57.9	15.7	13.0	3.9	302.3	82.6	18.5	16.3	3.2	252.2	69.1	22.4	11.2
Surgery (include orthopaedics)	47.1	248.3	68.0	6.9	35.0	58.9	276.1	75.4	7.9	34.9	54.3	279.6	76.6	8.3	33.7
Oncology (include radiology)	6.1	278.1	76.2	9.0	30.8	10.0	302.5	82.7	11.4	26.6	8.5	313.2	85.8	11.8	26.5
Otolaryngology	6.6	230.7	63.2	3.4	66.8	4.1	241.2	65.9	6.7	35.8	7.8	247.4	67.8	5.4	46.2
Ophthalmology	4.6	137.3	37.5	2.9	47.2	4.4	264.8	72.4	7.4	35.8	5.5	262.1	71.8	6.2	42.5
Obstetrics	14.2	192.5	52.7	4.5	43.0	10.8	240.6	65.7	6.6	36.4	14.2	203.2	55.7	6.0	33.7
Gynaecology	15.5	185.3	50.6	3.2	58.6	16.8	252.7	69.1	4.7	54.3	16.1	247.5	67.8	5.0	49.9
Neurology	10.9	264.8	72.5	9.4	28.7	15.3	312.8	85.5	10.7	29.2	16.7	300.1	82.2	10.3	29.1
Dermatology & venerology	2.2	236.1	64.7	11.9	19.9	1.4	303.4	82.9	15.9	19.1	1.9	266.0	72.9	12.6	21.2
Infectious	6.0	214.8	58.9	6.5	32.8	9.2	240.2	65.6	8.5	28.2	8.9	242.7	66.5	7.5	32.2
Tuberculosis	1.0	302.8	82.7	68.8	4.3	2.8	335.5	91.7	64.5	5.2	3.4	282.9	77.5	52.9	5.3
Paediatrics	14.5	225.8	61.7	6.6	33.4	12.0	264.3	72.2	8.5	31.0	16.9	241.4	66.1	7.1	34.1
Psychiatry	10.5	312.5	85.6	23.2	13.3	8.5	318.9	87.1	63.6	5.0	9.0	305.5	83.7	36.8	8.3
Narcology	-	-	-	-	-	6.3	267.8	73.2	7.2	37.0	1.6	237.2	65.0	13.1	18.1
General & nursing	-	-	-	-	-	5.8	229.5	62.7	9.0	25.5	6.8	303.0	83.0	38.3	7.9

\* Without short-term social care beds

Average length of stay



Discharges by groups of diseases in 2000

	Estonia				Latvia*				Lithuania			
	children		adults		children		adults		children		adults	
	discharges per 1000 pop.	average length of stay	discharges per 1000 pop.	average length of stay	discharges per 1000 pop.	average length of stay	discharges per 1000 pop.	average length of stay	discharges per 1000 pop.	average length of stay	discharges per 1000 pop.	average length of stay
Certain infectious and parasitic diseases	16.8	5.4	5.5	23.4	13.1	11.9	6.6	37.6	14.7	8.6	6.7	28.2
Neoplasm	4.5	4.7	18.5	8.9	2.5	9.4	20.5	10.5	2.4	10.5	18.3	11.8
Diseases of the blood and blood forming organs and certain disorders involving the immune mechanisms	1.7	5.9	0.9	10.9	0.8	9.3	0.7	11.7	1.1	7.8	0.7	10.4
Endocrine, nutritional and metabolic diseases	1.8	6.6	4.1	9.5	2.0	6.9	5.7	8.6	2.2	7.6	4.8	10.3
Mental disorders and behavioural disorders	6.9	11.6	13.6	21.8	10.0	23.5	18.4	27.2	4.2	15.6	13.8	31.3
Diseases of the nervous system	8.8	8.1	5.1	10.3	8.6	9.4	11.0	8.8	4.7	8.4	9.8	11.2
Diseases of the eye and adnexa	1.4	2.7	5.1	2.9	-	-	-	-	3.3	6.8	5.4	6.4
Diseases of the ear and mastoid process	5.5	5.5	1.2	5.8	-	-	-	-	3.3	6.8	1.6	8.3
Diseases of the circulatory system	2.0	4.8	39.1	11.6	2.3	6.3	36.8	10.7	2.8	5.9	47.7	13.3
Diseases of the respiratory system	61.5	5.9	15.3	9.0	52.6	8.4	15.6	10.3	66.7	7.1	18.1	10.7
Diseases of the digestive system	13.8	4.3	20.1	6.7	21.8	5.4	20.5	7.6	23.4	5.6	21.4	8.5
Diseases of the skin and subcutaneous tissue	4.9	5.0	3.7	10.6	4.9	6.6	3.7	9.4	5.4	6.2	4.1	10.6
Diseases of the musculo-skeletal and connective tissue	3.6	6.8	15.9	9.5	6.4	14.2	17.5	11.3	3.9	9.3	14.3	12.2
Diseases of the genitourinary system	7.9	5.4	15.8	5.7	8.7	6.6	20.6	5.5	6.2	6.5	18.9	7.1
Pregnancy, childbirth and puerperium	0.3	5.3	24.9	3.9	2.6	5.4	24.2	5.6	0.05	4.4	25.6	5.3
Certain conditions originating in perinatal period	9.9	9.5	-	-	12.9	8.9	-	-	15.7	8.0	-	-
Congenital malformations, deformations and chromosomal abnormalities	7.6	6.5	0.6	7.2	5.5	9.8	0.9	5.7	6.2	8.0	0.4	8.8
Symptoms, signs and abnormal clinical and laboratory findings, not elsewhere classified	3.1	3.2	1.1	5.7	0.5	4.1	0.1	5.3	6.2	33.8	1.0	9.6
Injury, poisoning and certain other consequences of external causes	12.4	4.8	12.9	10.0	19.2	6.0	22.3	8.9	19.1	5.6	21.7	9.4
<b>TOTAL</b>	<b>175.9</b>	<b>6.1</b>	<b>204.7</b>	<b>9.6</b>	<b>174.2</b>	<b>9.0</b>	<b>225.0</b>	<b>11.2</b>	<b>191.4</b>	<b>8.1</b>	<b>234.3</b>	<b>11.8</b>

\* Without short term social care beds

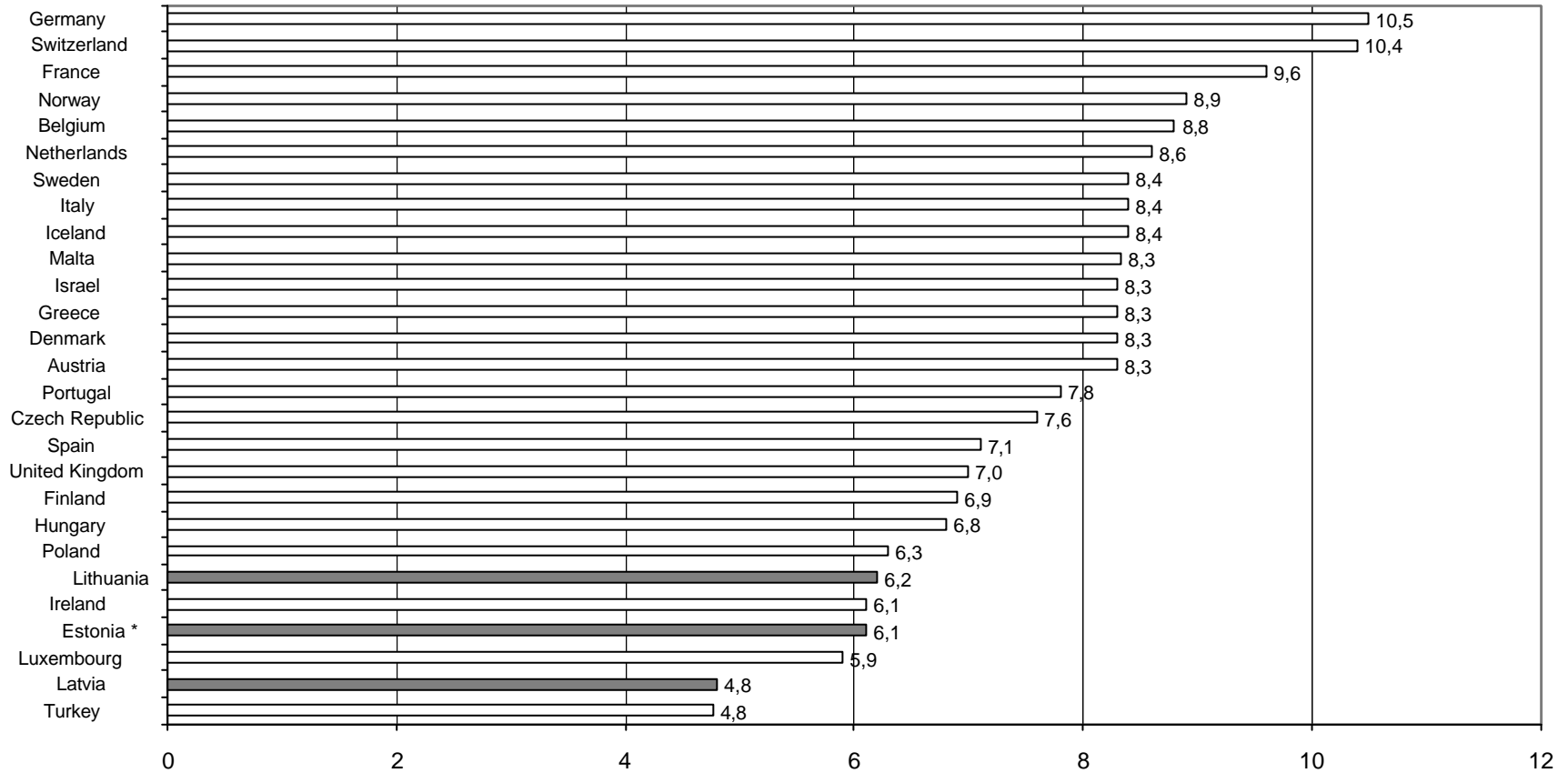
Surgical operations in hospitals in 2000

	Estonia			Latvia			Lithuania		
	Number	Per 100000 population	%	Number	Per 100000 population	%	Number	Per 100000 population	%
TOTAL	92268	6738.4	100.0	153266	6458.7	100.0	254519	6886.9	100.0
On the nervous system	2828	206.5	3.1	3107	130.9	2.0	5838	158.0	2.3
On the endocrine system	643	47.0	0.7	1291	54.4	0.8	1642	44.4	0.6
On the eye	5542	404.7	6.0	9065	382.0	5.9	12853	347.8	5.0
On the ear, throat and nose	10077	735.9	10.9	7546	318.0	4.9	21650	585.8	8.5
On the respiratory system	889	64.9	1.0	1768	74.5	1.2	3505	94.8	1.4
On the heart	1140	83.3	1.2	4725	199.1	3.1	2699	73.0	1.1
On the vessels	3560	260.0	3.9	3310	139.5	2.2	13185	356.8	5.2
On the digestive system	14987	1094.5	16.2	21864	921.4	14.3	42876	1160.2	16.8
On the kidneys and ureter	1063	77.6	1.2	1892	79.7	1.2	6481	175.4	2.5
On the prostate*	1188	86.8	1.3	2018	184.7	1.3	6558	376.4	2.6
On the female genital organs**	11656	851.3	12.6	23986	1873.0	15.6	39507	2022.7	15.6
Obstetrical operations**	13748	1004.0	14.9	22130	1728.1	14.4	28693	1469.0	11.3
On the musculo-skeletal system	13424	980.4	14.5	23144	975.3	15.1	34610	936.5	13.6
On the breast	726	53.0	0.8	2704	113.9	1.8	3216	97.0	1.3
On the skin and subcutaneous tissue	5384	393.2	5.8	16754	706.0	10.9	24248	656.1	9.5
Other procedures	5413	395.3	5.9	7125	300.2	4.6	6958	188.3	2.7

\*) Per 100000 male population

\*\*\*) Per 100000 female population

Total health care expenditures as % of GDP



Note: WHO data 1998-1999; data for Estonia, Latvia and Lithuania – 2000

\*Estonia– calculated using the OECD manual

### Certain Definitions

Birth -	Uterus muscles contraction to completely expulsion or if necessary extraction of foetus if duration of pregnancy was at least 22 weeks measured from the first day of the last menstruation
Life births -	Foetus, which after birth or extraction from mother breathes or shows other evidence of life whether or not the umbilical cord has been cut
Term birth -	Live birth in terms from 37 to 42 weeks of pregnancy (259-293 days) measured from the first day of the last menstruation
Pre-term birth -	Live birth till completed 36 weeks (till 258 days)
Maternal death -	The death of woman while pregnant irrespective of duration and site of pregnancy or within 42 days after termination of pregnancy from any cause related to pregnancy and labour or its complications as well as disease which was not due to pregnancy but which was aggravated by pregnancy excluding accidental or incidental causes
Abortion -	Spontaneous or induced (legal, therapeutic, illegal, criminal) abortion is pregnancy termination or artificial extraction of product of conception till 22 <sup>nd</sup> pregnancy week. In case if foetus keeps alive more then 6 days (6 days 23 hours 59 min.) pregnancy termination is considered as pre-term birth and foetus as pre-term born
Foetal death -	Death prior to foetus expulsion or extraction from its mother if pregnancy duration was at least 22 weeks and wasn't terminated by artificial interference; foetus after birth is considered as stillborn
Infant death -	Live-born death during the first year of life
Neonatal death *) -	Live-born death in the period from 0 till 27 days of life (27 days 23 hours 59 min.)
Early neonatal death*) -	Live-born death in the period from 0 till 6 days of life (6 days 23 hours 59 min.)
Perinatal death -	Foetal death and early neonatal death (for international comparison "standard rates" excluding weighing less then 1000g)

\* The first day of life is considered as day zero.



## Sources

1. Statistical Yearbook of Estonia 2001. Statistical Office of Estonia. Tallinn, 2001
2. Population Age Structure. Cities and Rural Municipalities 2000-2001. Statistical Office of Estonia. Tallinn, 2001
3. Estonian Health Statistics 1992-1999. Ministry of Social Affairs of Estonia. Tallinn, 2001
4. Estonian Statistics 2001 Monthly No 4 (112). Statistical Office of Estonia. Tallinn, 2001
5. Demographic Yearbook of Latvia 2001. Central Statistical Bureau of Latvia. Riga, 2001
6. Statistical Yearbook of Latvia 2001. Central Statistical Bureau of Latvia. Riga, 2001
7. Yearbook of Healthcare Statistics in Latvia 2000. Latvian Health Statistics and Medical Technology Agency, Health Statistics Department. Riga, 2001
8. Statistical Yearbook of Lithuania 2000. Department of Statistics to the Government of the Republic of Lithuania. Vilnius, 2001.
9. Demographic Yearbook 2000. Department of Statistics to the Government of the Republic of Lithuania. Vilnius, 2001.
10. Health Statistics of Lithuania 2000. Lithuanian Health Information Centre. Vilnius, 2001.
11. Health Statistics in the Nordic Countries 1999. NOMESCO 61:2001.
12. Health for All. Statistical Database. WHO Regional Office for Europe. Version January 2001.